

## SAFETY INSTRUCTIONS

Read this user manual and keep it with the product.

Always follow all safety instructions and local security regulations.

Never use accessories not manufactured or approved by Aura Audio with Aura Audio products.

Make sure no audience or crew member is too close to loudspeakers when operating with high sound pressure levels (SPL). Professional loudspeaker systems are capable of producing sound pressure levels high enough to cause permanent hearing damage even at exposure times less than couple of minutes.

Please check the Aura Audio website on a regular basis for latest downloads and updates.

In case of any questions please don't hesitate to contact us for more information via [info@auraaudio.fi](mailto:info@auraaudio.fi)

We also welcome all comments and system pics from you!

## TABLE OF CONTENTS

|    |                                       |   |
|----|---------------------------------------|---|
| 1. | Safety Instructions                   | 1 |
| 2. | Introduction                          | 2 |
| 3. | Aiming and directivity                | 3 |
| 4. | Directivity measurements              | 4 |
| 5. | i10 system diagram with D2 amplifiers | 5 |
| 6. | Specifications & Dimensions           | 6 |
| 7. | Declaration of Conformity             | 8 |



"a true full range - no filters required"

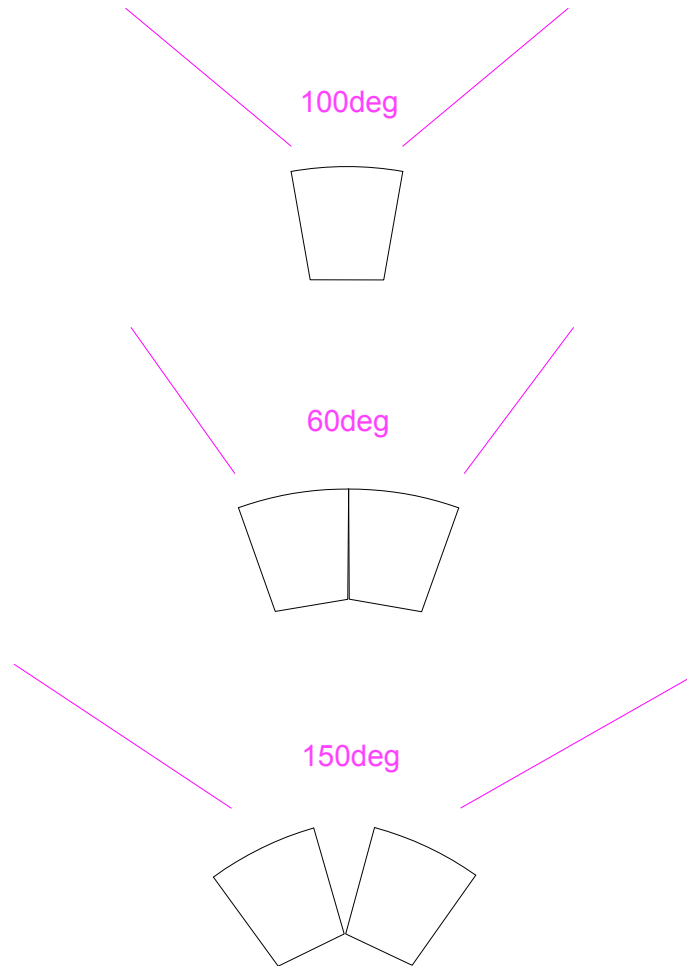
i10 is a compact passive 2-way full range loudspeaker. It consists of 10" long excursion cone driver and 1" exit compression driver with passive 2nd order cross-over network. As a true full range speaker i10 is totally fine on it's own without a additional subwoofer unlike most speakers similar size.

Proprietary acoustic waveguide design increases high frequency efficiency and HF directivity. 100x90 degree dispersion makes the loudspeaker suit most applications regardless of the shape of the space, and either vertical or horizontal orientation with similar coverage results.

i10 features a handle on the rear wall and 35mm pole mounting point. Optional mounting bracket with multiple connection points can be used for safe mounting to a wall or ceiling, or to a truss using a standard clamp.

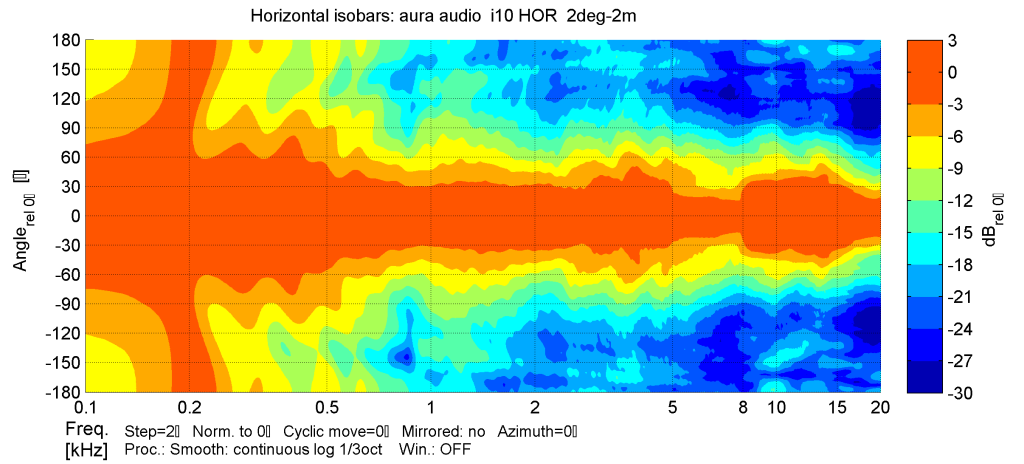
i10 is driven with Aura Audio D-series controller amplifiers featuring flexible speaker specific filtering, limiting and ultra high-quality class-D output stage powered by high-efficiency switch-mode power supply.

## AIMING TIPS AND DIRECTIVITY

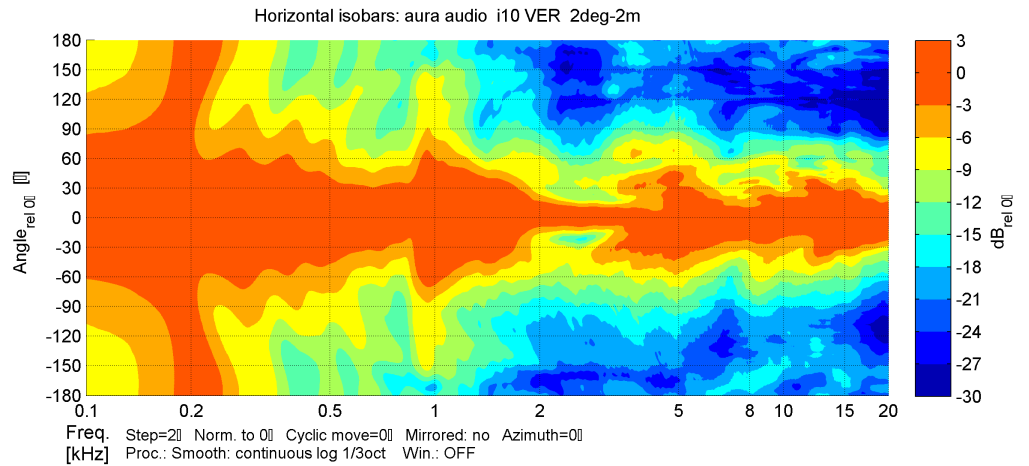


i10 directivity pattern changes from 100 degrees when multiple units are used in horizontal array.

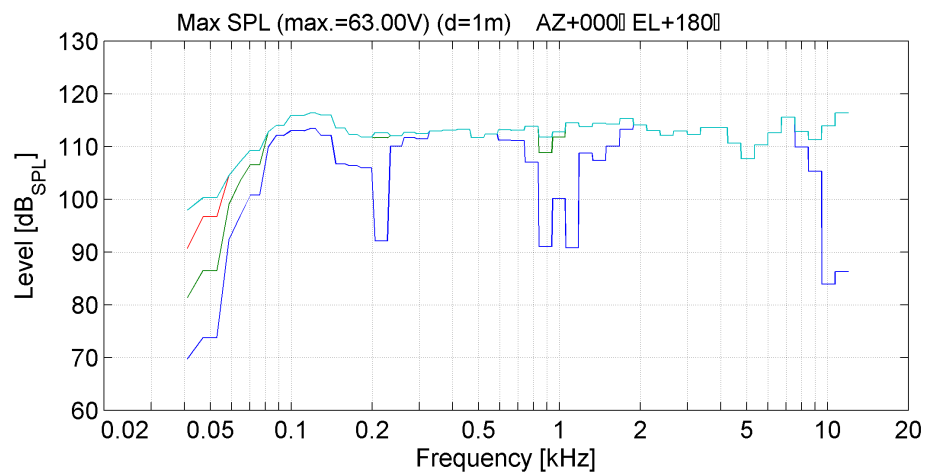
## i10 DIRECTIVITY & SPL vs THD MEASUREMENTS



### i10 horizontal 100deg beamwidth

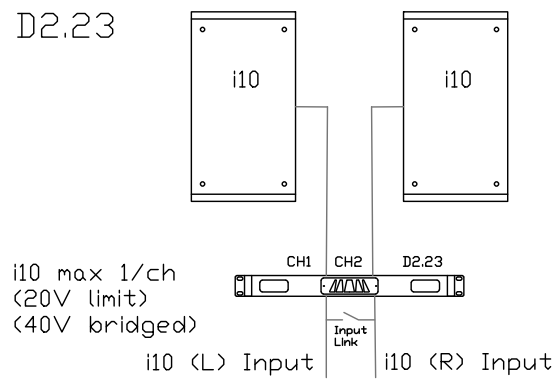


### i10 vertical 90deg beamwidth

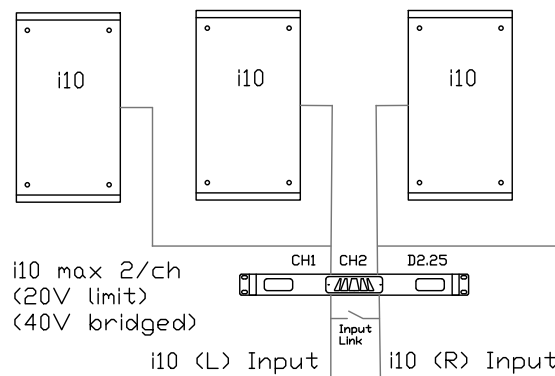


### i10 continuous SPL vs THD (1%, 3%, 10% and limit)

D2.23

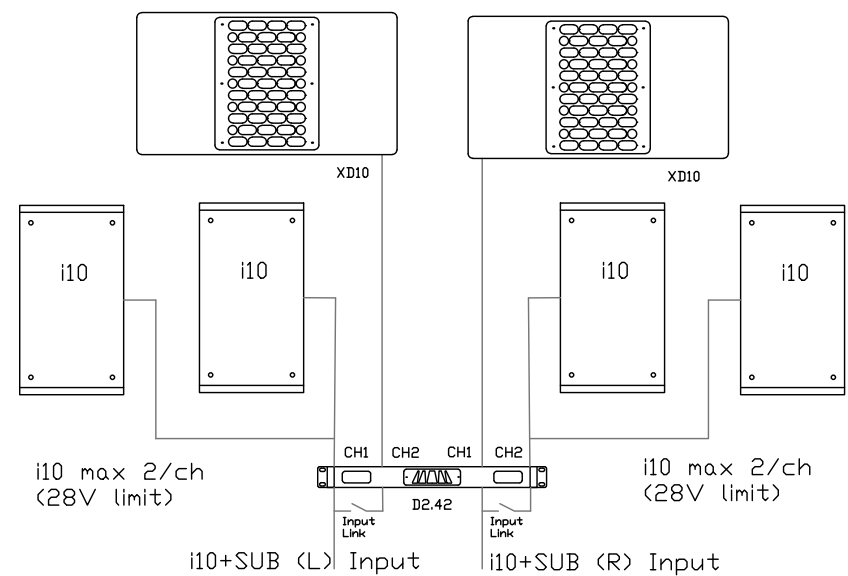


D2.25

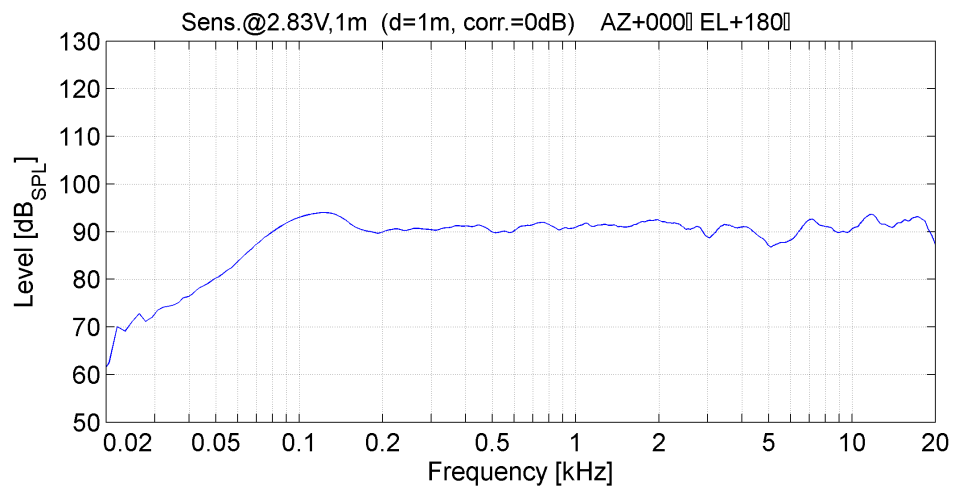


D2.42

(-3dB maxSPL) XD10 max 1 per chs (28V limit)



Example diagrams of i10 stereo system with D2.23 or D2.25 and i10 + XD10 systems D2.42 amplifiers



i10 Frequency response 1w/1m in anechoic chamber

## i10 SPECIFICATIONS

Frequency Response (-6 dB): 65 Hz – 20 kHz

Frequency Response (-10 dB): 50 Hz – 22 kHz

Horizontal Coverage (-6 dB): 100 degrees

Vertical Coverage (-6 dB): 90 degrees

Max SPL(cont/peak): 116/122 dB (free space)

Sensitivity 1w/1m: 92 dB (free space)

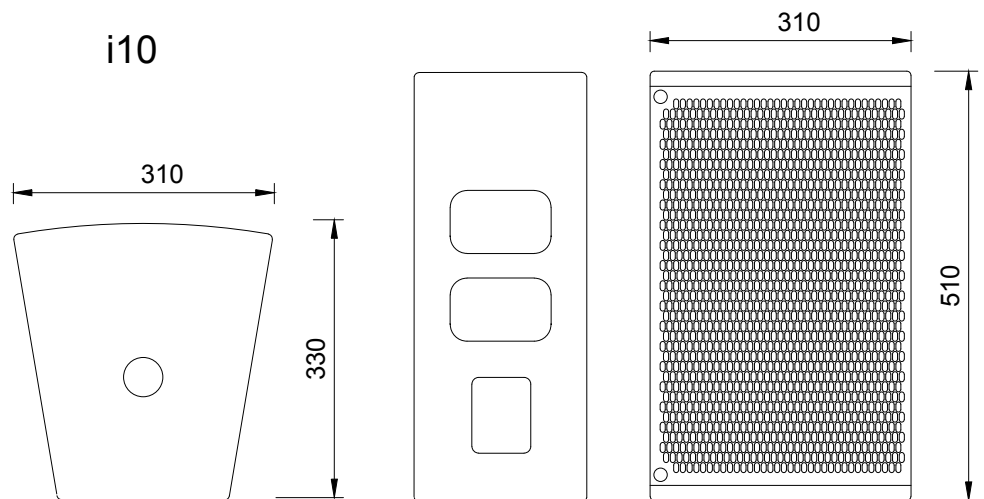
Impedance: 8 ohms

Crossover: passive at 3200Hz

Power handling: 250 W cont, 1000 W peak

Recommended HP-filter: 65-80Hz

## i10 DIMENSIONS



## DRIVERS

LF: (1) x 10" long-excursion cone driver, reflex-tuned

HF: (1) x 1" exit compression driver, horn-loaded, coaxial

## ENCLOSURE

Enclosure material: Plywood

Grille: Steel grill, black powder coat

Connectors: Speakon NL4

Dimensions: 510 mm x 310 mm x 330 mm

Weight: 14 kg

**EC declaration of conformity Manufacturer:**

Aura Audio Oy  
Pääskykalliontie 3  
21420 Lieto  
Finland

We declare the under our sole responsibility the following product models:

A-Series,  
C-series,  
F-Series,  
XD-series,  
XQ-series,  
i-series and

S-series products are intended to be used as loudspeakers and are in conformity with the following EC Directives, including all amendments, and with national legislation implementing these directives:

BS EN 60065:2002

BS EN 55103-1/-2

March 2024

A handwritten signature in black ink, consisting of a series of loops and a long horizontal stroke extending to the right.

Mika Isotalo  
Managing Director