

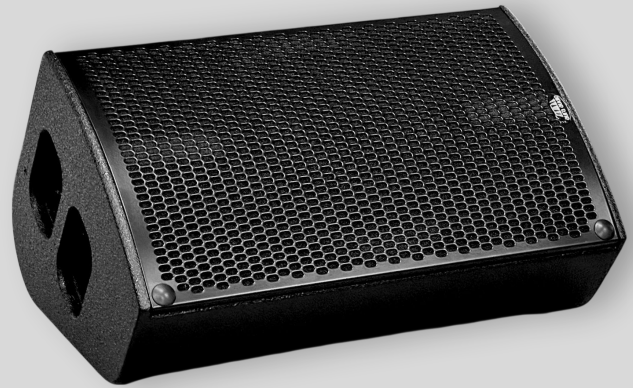
C-Series

C10

Versatile passive two-way compact loudspeaker.

The C10 consists of coaxially mounted 10" + 1" drivers. The 100 x 100 degree symmetric dispersion allows controlled coverage of larger areas from a single source. The extended LF response, down to 65Hz (-6dB), makes it a truly full-range loudspeaker. An ultra light fibre-class- plywood composite enclosure, with CNC machined handles, makes the C10 easy to handle and a pleasure to use.

30 degree low profile enclosure means the C10 offers a discrete solution for stage monitoring applications. And the high power to weight ratio makes it extremely useful for small PA applications too.



APPLICATIONS

Medium SPL stage monitors
Front of house for small size touring
Medium size installations
Speech reinforcement
Music reinforcement with or without subwoofer

DRIVERS

LF: (1) x 10" cone driver, reflex-tuned
HF: (1) x 1" compression driver, coaxial

SPECIFICATIONS

Frequency Response (-6 dB): 65 Hz – 20 kHz
Horizontal Coverage (-6 dB): 100 degrees
Vertical Coverage (-6 dB): 100 degrees
Max SPL : 122/128 dB (free space)
Sensitivity, 1w/1m: 98 dB (free space)
Impedance: 8 ohms
Crossover: 2.8 kHz passive
Power handling: 250 W cont, 1000 W peak
Recommended HP-filter: 65 Hz, 24 dB/octave

ENCLOSURE

Enclosure material: Bended birch plywood, textured black paint finish
Grille: Cold rolled steel grille, textured black paint finish
Connectors: (2) x NL4, +/-1: Input, +/-2: Linked
Dimensions: 500 mm x 310 mm x 260 mm
Weight: 12 kg

