

SAFETY INSTRUCTIONS

Read this user manual and keep it with the product.

Always follow all safety instructions and local security regulations.

Never use accessories not manufactured or approved by Aura Audio with Aura Audio products.

Make sure no audience or crew member is too close to loudspeakers when operating with high sound pressure levels (SPL). Professional loudspeaker systems are capable of producing sound pressure levels high enough to cause permanent hearing damage even at exposure times less than couple of minutes.

Please check the Aura Audio website on a regular basis for latest downloads and updates.

In case of any questions please don't hesitate to contact us for more information via info@auraaudio.fi

We also welcome all comments and system pics from you!

TABLE OF CONTENTS

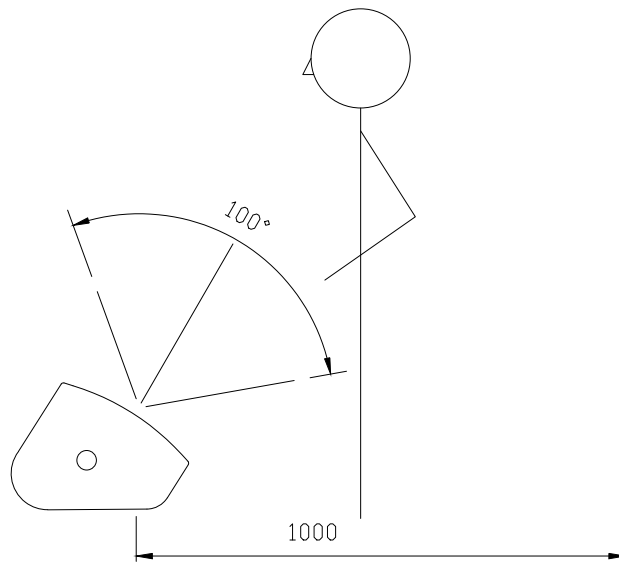
1.	Safety Instructions	1
2.	Introduction	2
3.	Aiming and directivity	3
4.	Directivity measurements	4
5.	C15 system diagram with D2 amplifiers	5
6.	Specifications & Dimensions	6
7.	Declaration of Conformity	7



C10 is a versatile passive two-way compact loudspeaker. The integration of a 35mm stand adapter and M20 connection inside the adapter add to the flexibility of this truly multi-purpose model. The 30 degree low profile enclosure means the C10 offers a discrete solution for stage monitoring applications. And the high power to weight ratio makes it extremely useful for small PA applications too.

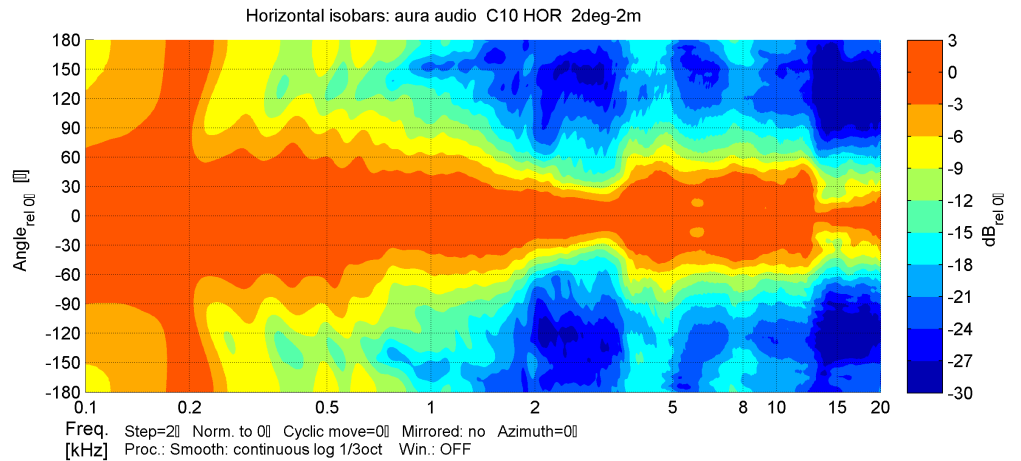
The C10 consists of coaxially mounted 10" + 1" drivers. The 100 x 100 degree symmetric dispersion allows controlled coverage of larger areas from a single source. The extended LF response, down to 65Hz (-6dB), makes it a truly full-range loudspeaker. An ultra light fiberglass-plywood composite enclosure, with CNC machined handles, makes the C10 easy to handle and a pleasure to use.

AIMING TIPS AND DIRECTIVITY

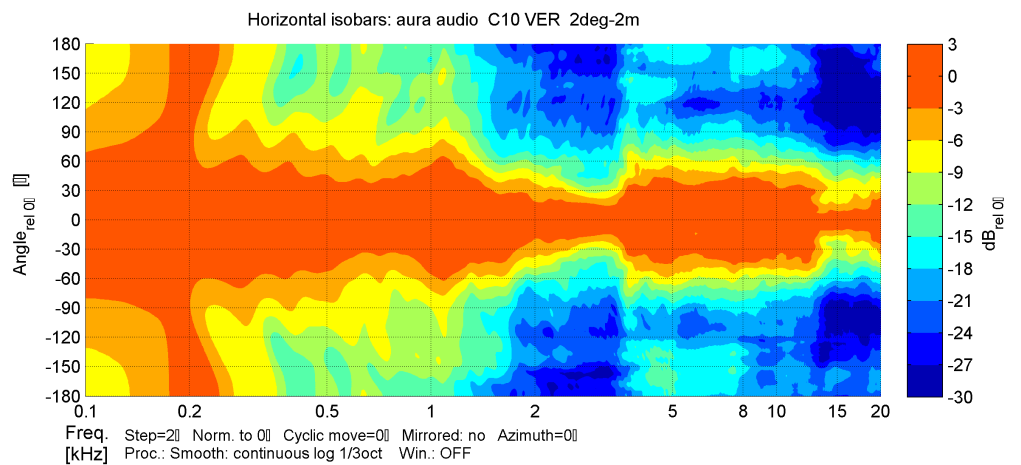


C10 vertical aiming principle

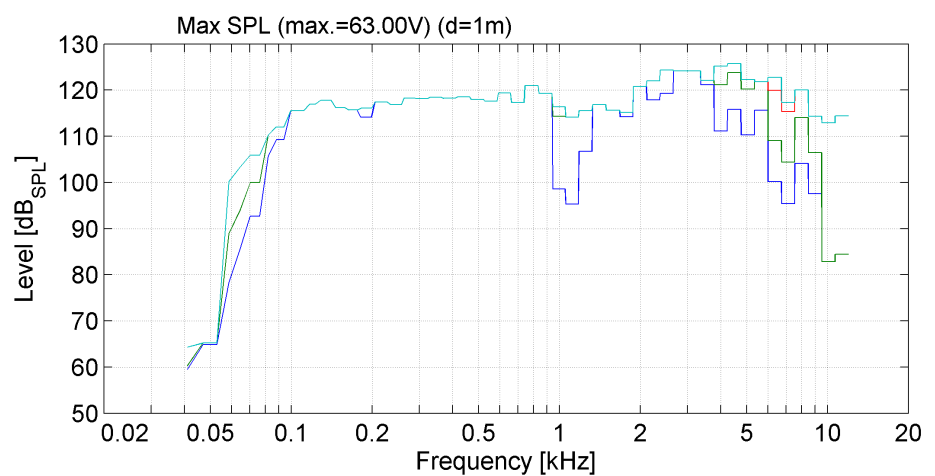
C15 DIRECTIVITY & SPL vs THD MEASUREMENTS



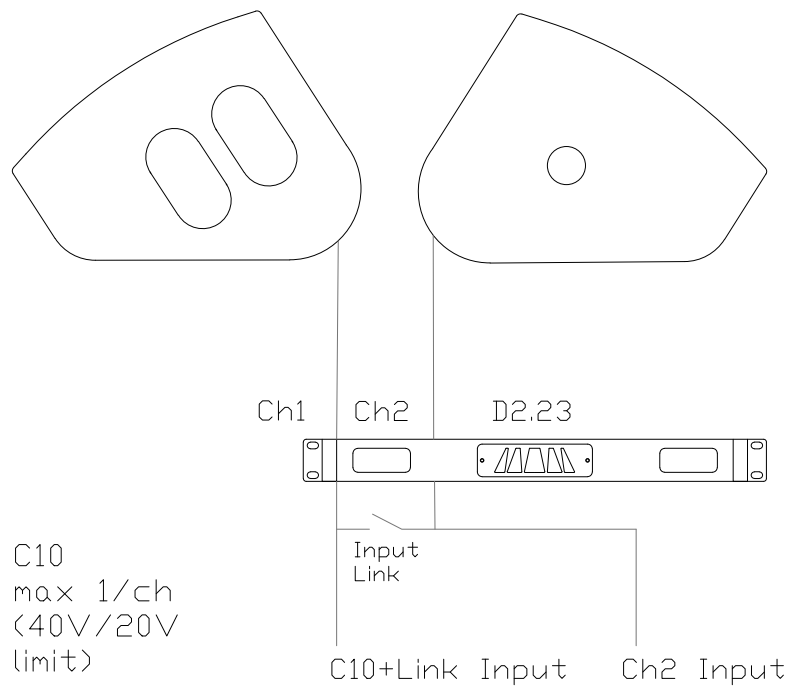
C10 horizontal 100deg beamwidth



C10 vertical 100deg beamwidth



C10 continuous SPL vs THD (1%, 3%, 10% and limit)



Example diagram of C10 stereo system with D2.23 or D2.25 amplifier

SPECIFICATIONS

Frequency Response (-6 dB): 65 Hz – 20 kHz

Horizontal Coverage (-6 dB): 100 degrees

Vertical Coverage (-6 dB): 100 degrees

Max SPL(cont/peak): 122/128 dB (free space)

Sensitivity 1w/1m: 98 dB (free space)

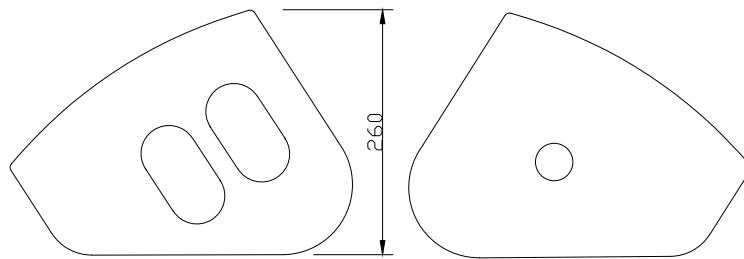
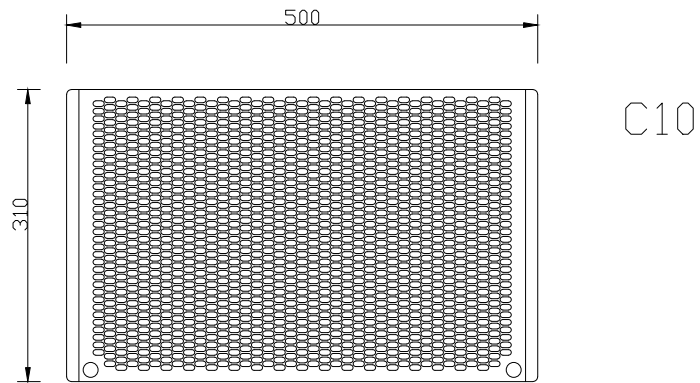
Impedance: 8 ohms

Crossover: passive at 2800Hz

Power handling: 250 W cont, 1000 W peak

Recommended HP-filter: 65-80Hz

DIMENSIONS



DRIVERS

LF: (1) x 10" long-excursion cone driver, reflex-tuned

HF: (1) x 1" exit compression driver, horn-loaded, coaxial

ENCLOSURE

Enclosure material: Plywood, fiberglass

Grille: Steel grill, black powder coat

Connectors: Speakon NL4

Dimensions: 500 mm x 310 mm x 260 mm

Weight: 12 kg

EC declaration of conformity Manufacturer:

Aura Audio Oy
Pääskykalliontie 3
21420 Lieto
Finland

We declare the under our sole responsibility the following product models:

A-Series,
C-series,
F-Series,
XD-series,
XQ-series,
i-series and

S-series products are intended to be used as loudspeakers and are in conformity with the following EC Directives, including all amendments, and with national legislation implementing these directives:

BS EN 60065:2002

BS EN 55103-1/-2

March 2024

A handwritten signature in black ink, consisting of a series of loops and a long horizontal stroke extending to the right.

Mika Isotalo
Managing Director