

## i-Series

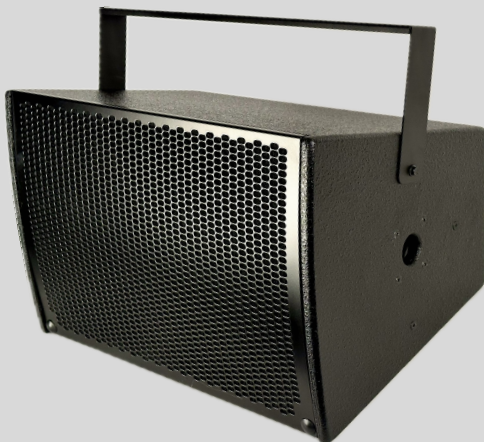
# i12

### Compact passive 2-way loudspeaker.

It consists of 12" cone driver and 1" exit compression driver with passive 2nd order cross-over network. Proprietary acoustic waveguide design increases high frequency efficiency and directivity character. 100x90 degree dispersion makes the loudspeaker suit most applications regardless of the shape of the space, and either vertical or horizontal orientation with similar coverage results.

i12 features fixed wall or ceiling mounting bracket with multiple connection points and standard 35mm pole mount adapter for touring applications.

i12 is driven with Aura Audio D-series controller amplifiers featuring flexible speaker specific filtering, limiting and ultra high-quality class-D output stage powered by high-efficiency switch-mode power supply.



#### APPLICATIONS

Small to medium installations  
Night clubs and music bars  
Speech reinforcement  
Music reinforcement with XD10 or XD12 subwoofer

#### SPECIFICATIONS

Frequency Response (-6 dB): 50–20kHz  
Horizontal Coverage (-6 dB): 100 degrees  
Vertical Coverage (-6 dB): 90 degrees  
Max peak SPL : 127 dB (free space)  
Sensitivity 1w/1m: 98 dB (free space)  
Crossover: 3.4kHz passive  
Impedance: 8 ohms  
Power handling: 200 W rms, 800 W pk  
Recommended HP-filter: 50 Hz, 12dB/oct

#### DRIVERS

LF: (1) x 12" cone driver, reflex-loaded  
HF: (1) x 1" exit compression driver

#### ENCLOSURE

Enclosure material: Finnish birch plywood,  
textured black paint finish  
Connectors: (1) x NL4, +/-1: Input, +/-2: link  
Dimensions: 540 mm x 360 mm x 370 mm  
Weight: 13 kg



  
aura audio®

