

# Specifications

**LEO 92SJplus**

**TEUPEN®**  
...access redefined

since '77

## PERFORMANCE

Working height, max. (662 lbs / 882 lbs)	98 ft 5 in / 88 ft 6 in
Working height, max. (both sides narrow)	82 ft
Platform height (661 lbs / 882 lbs)	91 ft 10 in / 82 ft
Platform height, max. (both sides narrow)	75 ft 5 in
Horizontal outreach, max. (882 lbs)	41 ft 7 in
Horizontal outreach, max. (661 lbs)	45 ft 11 in
Horizontal outreach, max. (176 lbs)	55 ft 9 in
Horizontal outreach, max. (both sides narrow)	47 ft 6 in
Platform capacity, max.	882 lbs
Platform capacity, max. (both sides narrow)	551 lbs
Jib, movable	180 °
Platform, rotatable	180 °
Turntable rotation, max.	450 °
To be jacked up on ground slope of	16.7 ° / 30.0 %
Track drive, height- and width-adjustable	9 / 8 in
Gradeability, max.	16.7 ° / 30.0 %
Slope angle, max.	21.0 ° / 38.0 %
Travel speed, max.	1.85 mph

## MEASUREMENTS\*

Platform (height) (A)	3 ft 7 in
Platform (length) (B)	3 ft 11 in
Platform (width) (C)	2 ft 7 in
Length (D)	25 ft 3 in
Length without platform (E)	24 ft 7 in
Height (F)	6 ft 5 in
Width, min. (G)	5 ft 2 in
Ground clearance, max. (H)	1 ft 4 in
Track (length x width) (I)	6 ft 3 in x 9 in
Stabilizer footprint both side wide (length) (J)	18 ft 4 in
Stabilizer footprint both side wide (width) (K)	18 ft 4 in
Stabilizer footprint one side narrow (length) (L)	24 ft 9 in
Stabilizer footprint one side narrow (width) (M)	14 ft 1 in
Stabilizer footprint both sides narrow (width) (N)	9 ft 9 in
Stabilizer plate (length x width)	1 ft x 8 in

## WEIGHT\*

Total weight	11,500 lbs
Live load in travelling position	4.10 kN/m
Live load in working position	1.70 kN/m
Point load per outrigger plate, max.	32.00 kN

## POWER SOURCES

Standard power sources:

■ Electric motor	(230 V, 12.9 A, 2.2 kW)
■ Combustion engine (Diesel)	Kubota D902 (16.1 kW / 21.6 hp)

Optional power source:

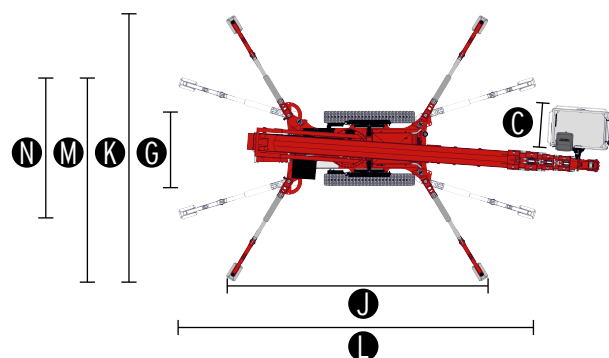
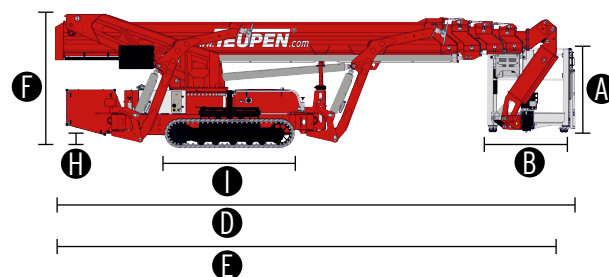
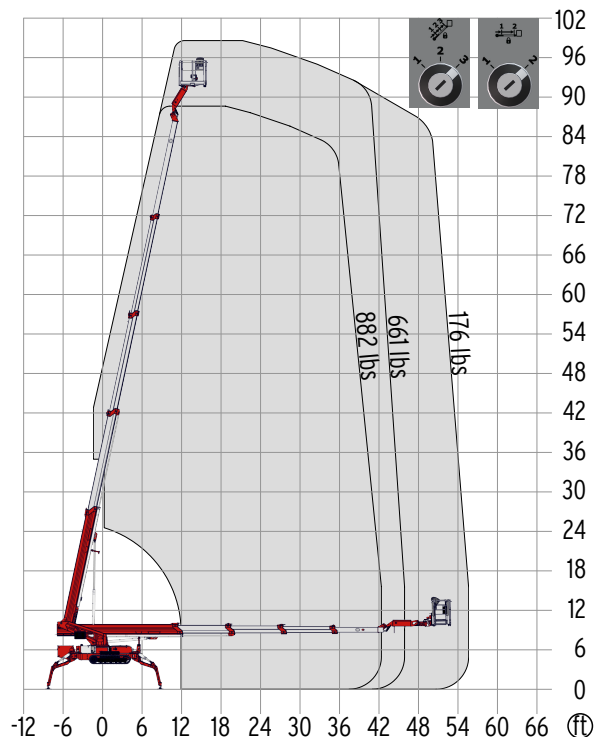
■ Battery drive (RFB)	80 V
Fuel tank capacity (Diesel engine)	10.30 gal

## POWER SUPPLY

Electric current, max.	115 V / 20 A
------------------------	--------------

\* The technical data may deviate +/- 3 % from the specified values.

\* Weight and dimensions may vary depending on options and accessories.



## STANDARDS



EN ISO 9001



ANSI/SIA A92.5-2006  
section 4 & CSA  
B3541-2004  
"Design & manufacture criteria"

www.**TEUPEN**.com

# Features



**TEUPEN**<sup>®</sup>  
...access redefined

since '77

## CHASSIS

- Powerful track drive with hydraulic braking system
- Precise manoeuvring via sensitive remote control
- White, non-marking rubber tracks with specially arranged profile for optimal grip
- Hydraulically height- and width-adjustable crawler track drive

## STABILIZATION

- Electrohydraulic stabilizers with automatic levelling and ground pressure sensor system
- Variable stabilization system with one side or both sides narrow setup option
- stabilizer pads, steel

## BOOM SYSTEM

- Boom system made of steel/aluminium boom tubes
- All functions available via radio remote control
- Stepless, electrical proportional control system with intuitive operation
- Robust, lockable control panel
- Parallel guided platform with electro hydraulic levelling
- 180° platform rotation for additional flexibility
- Turntable rotation via high-performance slewing ring and hydraulic motor
- Platform changing system
- Coming home and memory function - can be stored for any point on the work diagram and the point can be accessed once more at the touch of a button
- Radio control with display, two-line
- Height cut-off for boom system, 2 set points
- Horizontal outreach, selectable
- Switching, platform capacity (661 lbs / 882 lbs)

## POWER SOURCE

- Electric motor (230 V, 12.9 A, 2.2 kW)
- Diesel engine Kubota D902 (16.1 kW / 21.6 hp)
- Start-stop device for combustion engine via radio control

## PRODUCTIVITY, SAFETY, QUALITY

- Hydraulic emergency lowering via electric pump
- Additional hydraulic drive for boom recovery via platform control
- Power socket in the platform (115 V / 13 A)
- 2 LED headlights (drive unit)
- Detachable platform, attachment points for safety harnesses and tool tray
- Drive operation without platform possible
- Lockable storage box
- Protected, internal power track for platform control
- Hydraulic system filled with biodegradable hydraulic oil
- High-quality paint in RAL 3020 (red)
  - Hydraulic cylinders in RAL 9006 (grey)
- Unlockable check valves located directly on hydraulic cylinders
- Hydraulic system protected by pressure relief valves
- Hydraulic tank, emergency control, connecting cables and hoses are mounted protected

## PRODUCTIVITY, SAFETY, QUALITY

- Hour meter
- Fuzzy control technology

## OPTIONS\*

- Battery drive (RFB) 80 V including charging device
- Custom paintwork, one colour, according to RAL scheme
  - (except metallic coatings, signal- or special colours)
- Custom paintwork, two colours, according to RAL scheme
  - (except metallic coatings, signal- or special colours)
- Water and air connection, platform

## ACCESSORIES\*

- Safety harness
- Track mat (78.8" x 31.5" x 0.6")
- 4 sliding pads (33.5" x 13.4" x 3.0")
- Storage frame for sliding pads, lockable
- Snap hook, boom tubes
- 2 protective track covers made of high-quality polypropylene fabric
- TOP level 1
- Additional display in the control box
- Tree package, including
  - Cover (hydraulic tank, fuel tank, control box)
  - 4 covers, piston rod (stabilizer)
  - Cover (gear box)
- Lighting package:
  - 8 flashlights (stabilizers)
  - 3 flashlights (turntable)
- 1 LED headlight (platform)
- Platform including platform support (35.5" x 31.5")
- Platform including platform support (59.1" x 31.5")
- Platform including platform support (78.74" x 31.5")
- Lifting device (992 lbs capacity)
  - Only in combination with additional display in the control box
- Copper strips, pivot point
- Platform ladder monitoring system with boom function cut-off

**USM ReRents**  
*We Only Rent to  
Rental Companies!*  
[usmrents.com](http://usmrents.com)  
**630.530.8550**

## CONTACT

### TEUPEN North America

10701 Southern Loop Blvd.  
Charlotte (Pineville), NC 28134  
USA

Phone (704) 248-9888  
Fax (704) 248-9889  
E-mail [info@teupen-usa.com](mailto:info@teupen-usa.com)

\* Weight and dimensions may vary depending on options and accessories.

Product specifications are subject to change without notice or obligation. Photographs and drawings in this document are for illustrative purposes only. Refer to the appropriate Operator's Manual for instructions on the proper use of this equipment. Failure to follow the appropriate Operator's Manual when using our equipment or to otherwise act irresponsibly may result in serious injury or death. The only warranty applicable to our equipment is the standard written warranty applicable to the particular product and sale and we make no other warranty, expressed or implied. Products and services listed may be trademarks, service marks or trade-names of TEUPEN Maschinenbau GmbH and/or its subsidiaries in the U.S.A. and many other countries. "TEUPEN", "Access redefined" and "LEO Series" are registered Trademarks of Teupen GmbH in the United States of America and many other countries. © 2018 TEUPEN Maschinenbau GmbH.



2019-A\_en\_US

[www.TEUPEN.com](http://www.TEUPEN.com)