

Hays County Water Supply Planning & Flooding Assessment Precinct 3 Stakeholder Meeting

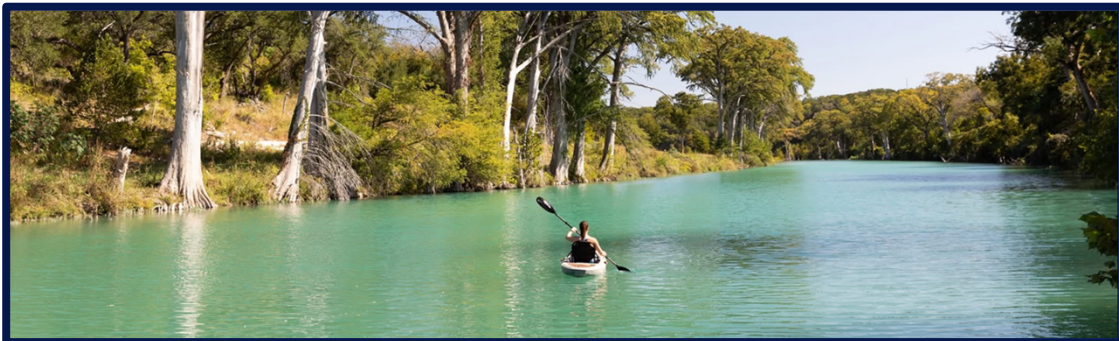


4/23/2026

1

Welcome & Overview

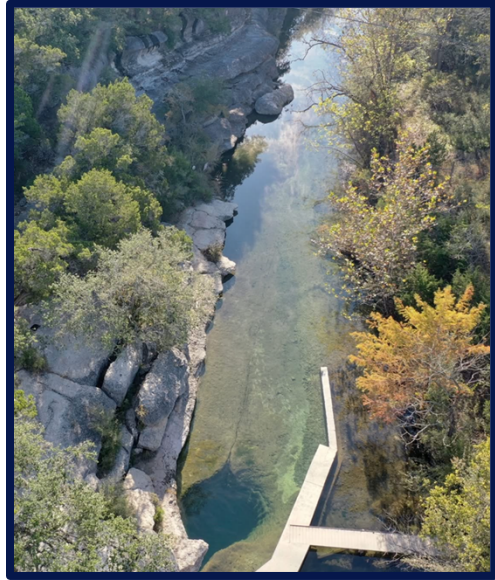
- Water planning effort
- Discussion of growth, groundwater, and future water needs
- Flooding concerns and mitigation opportunities



2

How You Can Participate

- Ask questions.
- Offer ideas about water supplies, usage, drought management, conservation, and growth.
- Share local experiences and help identify flooding concerns and priorities.
- Support county and regional planning efforts.



3

About This Study

- Hays County is planning for future water supply needs.
- The study looks at both **water supply planning** and **flooding concerns**.
- This is a planning effort to inform future decisions.
- The project timeline runs through December 2026.



4

Study Goals

- Provide a high-level overview of **water-related** resources in Hays County.
 - Includes water and wastewater providers
- **Evaluate and plan for any current or projected water needs.**
- **Assess countywide flood risks** and develop flood mitigation evaluations and projects to reduce community vulnerability.



5

Study Goals

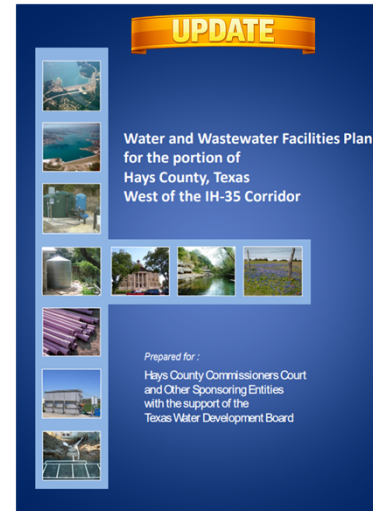
- **Evaluate sewer infrastructure needs** in the **Hillside Terrace** neighborhood to address aging septic systems and flooding-related failures.
- **Incorporate land-use and development policy impacts** on water demand, growth, and flooding into planning recommendations.
- **Engage stakeholders across the county** to communicate project goals, gather input, and build support for future water and flood management strategies.



6

Hays County Overview

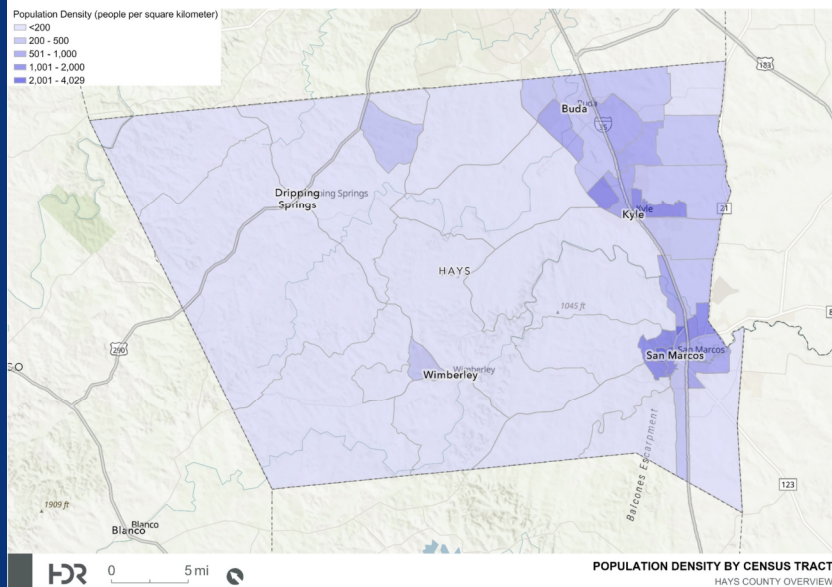
- A **countywide, high-level review** of Hays County's water and wastewater systems
- Updated information expanding on the **2011 Water and Wastewater Facilities Plan**
- Topics include:
 - Geography and growth patterns
 - Population trends
 - Municipalities
 - River authorities
 - Groundwater conservation districts
 - Regional and wholesale water supplies
 - Industrial customers



7

Population Density

2020 Census
Population Density



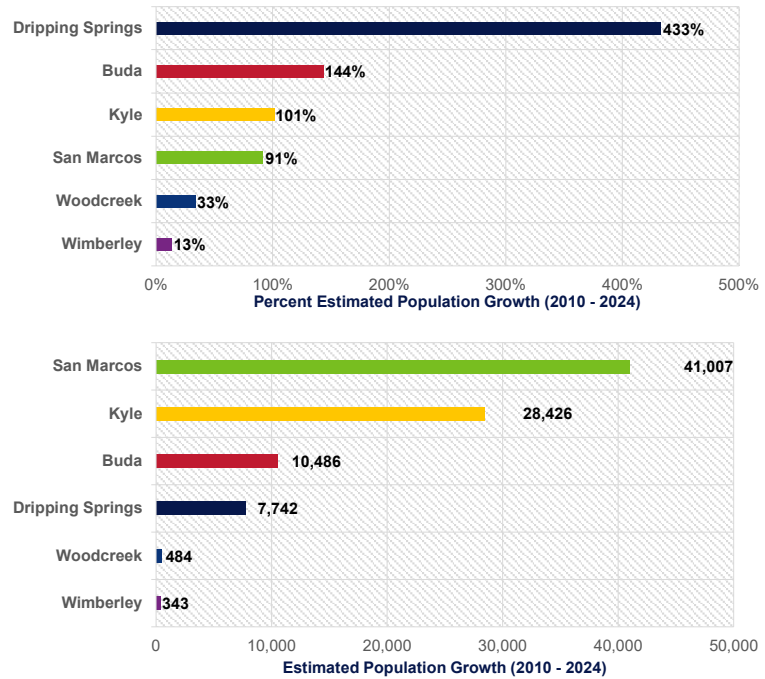
© HDR 2024, all rights reserved.

8

Major Growth Areas

Major Growth Areas by city/town between 2010 and 2020

US Census 2010 & Texas Demographic Center 2024 Estimates

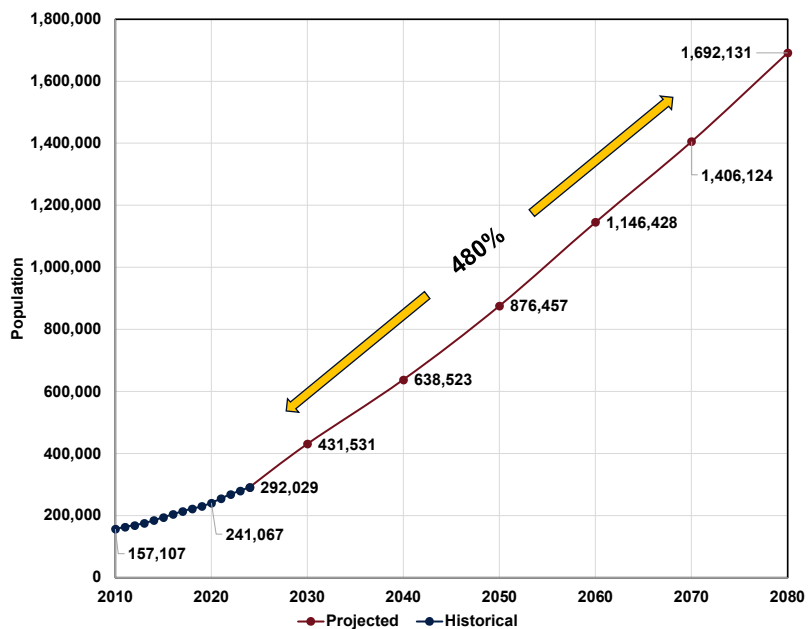


9

Hays County Population Growth & Projection

- 85% increase in population since 2010 (157,107 to 292,029)
- Projected increase in population of approximately 480% by 2080 (292,029 to 1,692,131)

TWDB 2026 Regional Water Plan



© HDR 2024, all rights reserved.

10

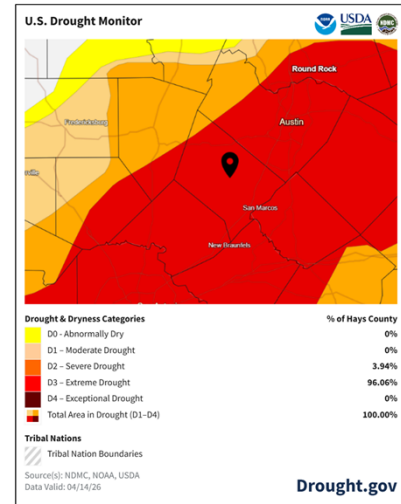
Water Challenges Facing Hays County

Key Challenges:

- Increased demand due to **population growth**
- **Heavy reliance on groundwater** in drought-prone areas
 - Reduced rainfall and increasing demands on aquifers
- **Groundwater availability varies** by location, aquifer, and depth
- **Regulatory limits** on groundwater pumping and permitted supplies
- **Infrastructure constraints**
- **Geographic locations**

Tonight's Focus:

- Planning for a **reliable water supply**
- Integrated planning supports long-term resilience needed to avoid shortages



11

Localized Water Supply Plan



12

Utility Level Planning

Wimberley WSC and Aqua (Woodcreek)

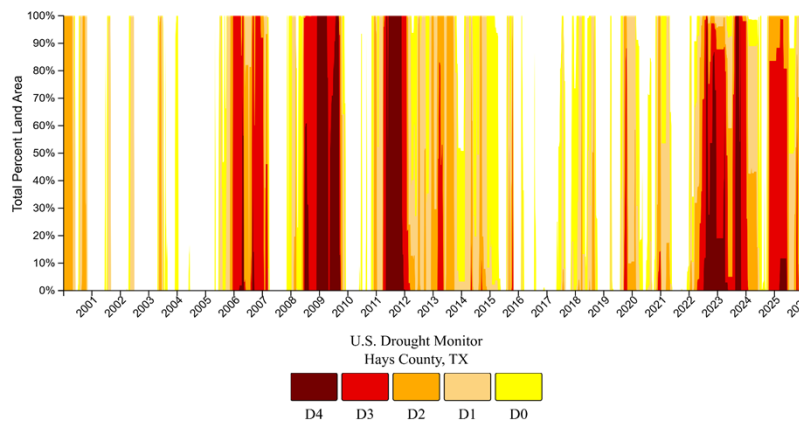
- Deeper dive into local water supply planning
- Customers
 - Customer types
 - Water usage patterns
 - Growth
- Current supplies
 - Needs
 - Water supply opportunities
 - Conservation and drought management
 - Costs
- Implementation
- Regional planning



13

Challenges

- Limited local supplies
- Highly drought susceptible source water
- Geographic isolation



14

Identifying Water Management Solutions

- Strategy evaluation
 - Water conservation and efficiency
 - Water loss strategies
 - Wastewater reuse and advanced treatment
 - Includes non-potable reuse (purple pipe) & direct potable reuse
 - Blending groundwater with other supplies to meet quality standards
 - Regional water supplies (e.g., Alliance Water, wholesale water purchase, Guadalupe-Blanco River Authority (GBRA))



15

Developing the Water Supply Plan

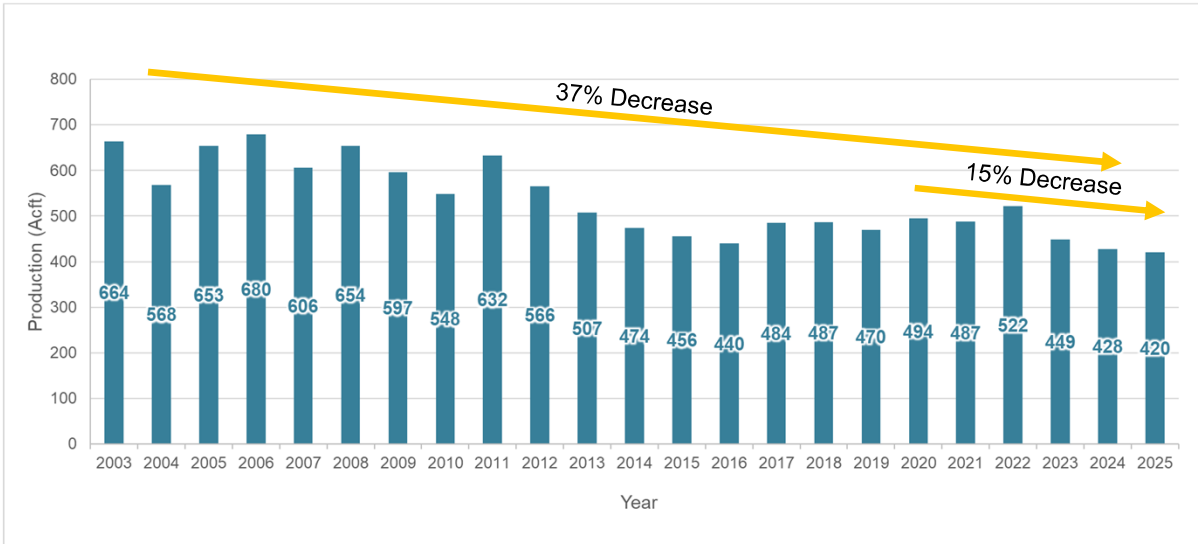
- Decision making
 - Compare feasibility, cost, and reliability
 - Consider regional and long-term benefits
- Implementation planning
 - Phase solutions over time to meet projected growth and demand
 - Integrate water management strategies to the existing water supply system
- Integrate localized water supply plans into the State's regional water planning process
 - A locally-driven and refined planning approach



16

Historical Annual Production

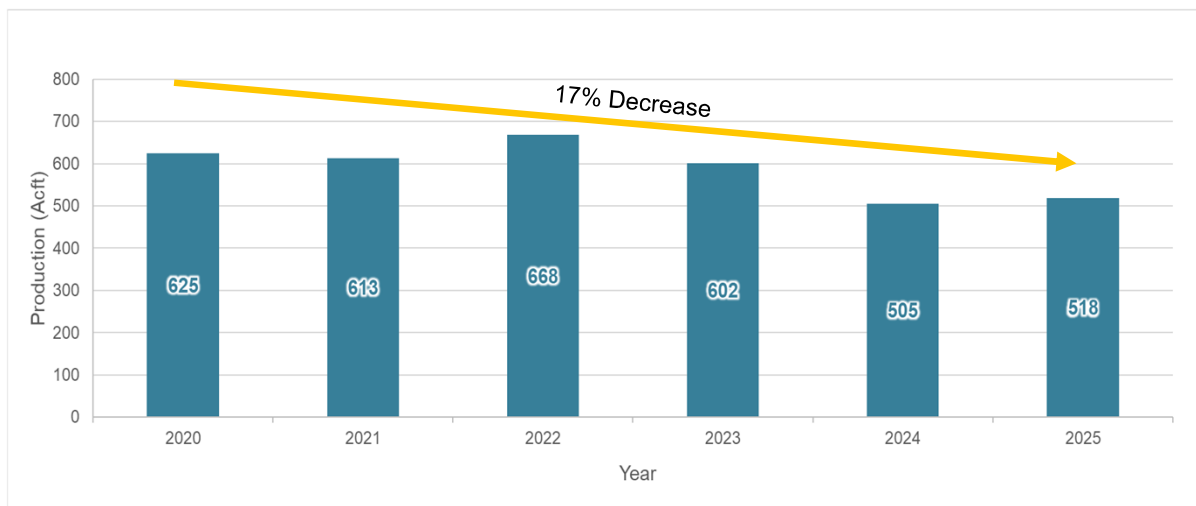
Wimberley WSC



17

Recent Annual Production

Woodcreek / Aqua

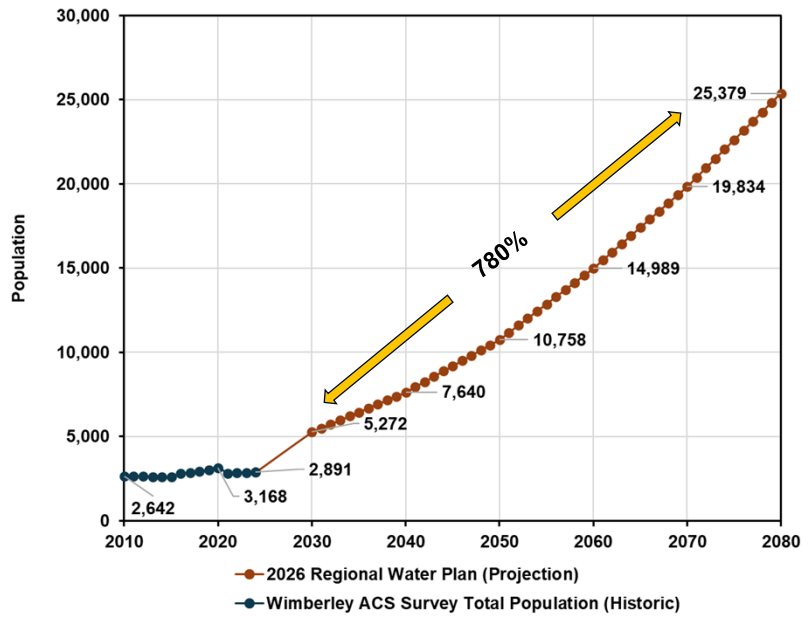


18

Wimberly WSC Population Growth & Projection

- 9% increase in population since 2010 (2,642 to 2,891)
- Projected increase in population of approximately 780% by 2080 (2,891 to 25,379)

TWDB 2026 Regional Water Plan



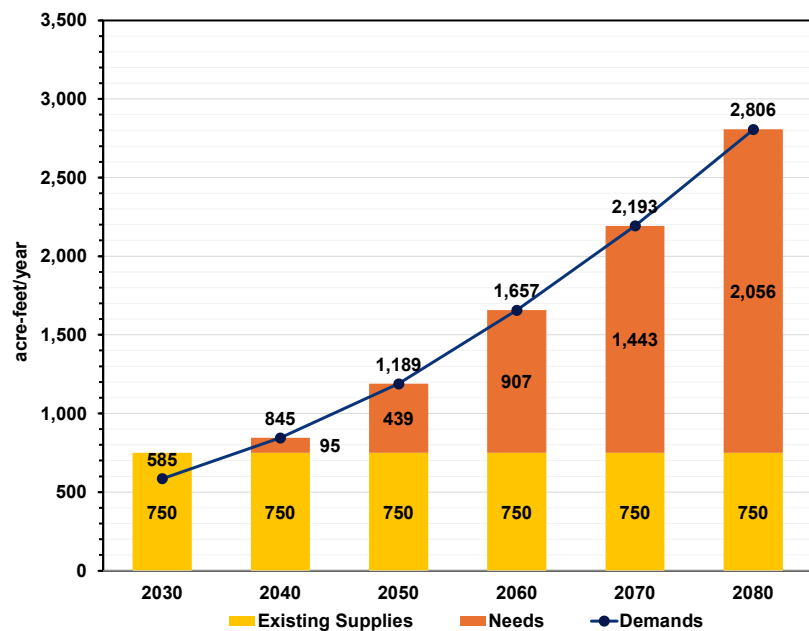
© HDR 2024, all rights reserved.

19

2026 Regional Water Plan Data – Wimberley WSC

*Projected demand,
supplies, and needs
for Wimberley WSC*

2026 State Water Plan by Water User Group



© HDR 2024, all rights reserved.

20

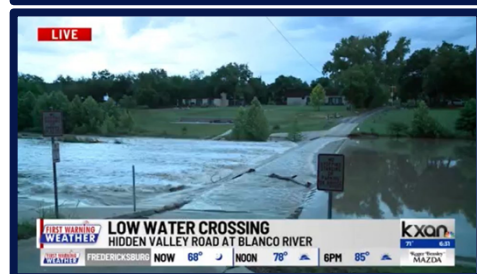
Flooding Assessment



21

Flooding Assessment

- Collaborate with County Commissioners and local stakeholders to:
 - Identify **one flood mitigation project** in each precinct
 - Reduce local flood risk
 - Meet Texas Water Development Board (TWDB) project criteria
- Community input will directly influence project identification and priorities



22

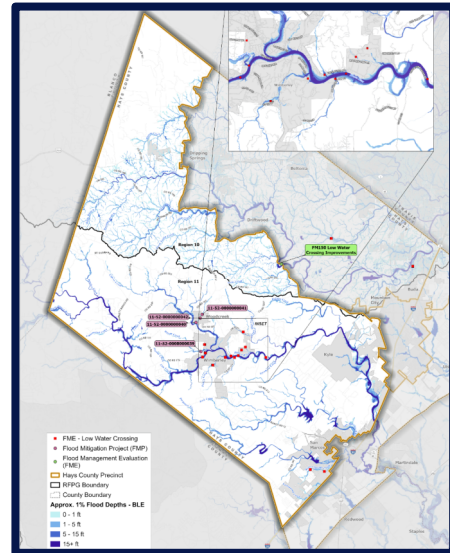
Flooding Assessment

Known flooding concerns

- Includes projects previously identified in:
 - Hays County Hazard Mitigation Plan
 - State and Regional Flood Plans
 - Region 10 - Lower Colorado-Lavaca
 - Region 11 – Guadalupe

Previously identified/ongoing projects

- City of Kyle Drainage Master Plan
- Flood Mitigation Evaluations (FMEs)
- Low Water Crossings

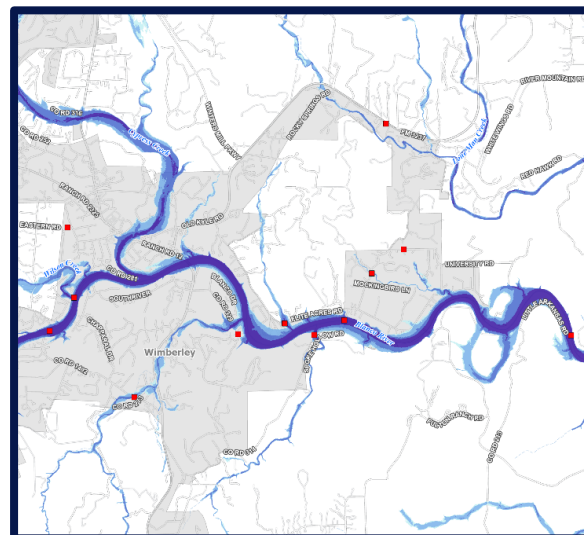


23

Flooding Assessment

Tonight's Focus

- Share local knowledge about flooding issues
- Identify flood-prone locations
 - Roads that frequently flood
 - Drainage issues not shown on maps
 - Neighborhoods that become isolated during storms
 - Access problems during storms



24

Discussion and Q&A



25

Share Questions & Comments

Use the **feedback form** provided to

- Ask questions
- Share comments or suggestions
- Provide additional input

-OR-

email: tricia.sebes@hdrinc.com



26



© HDR, all rights reserved.