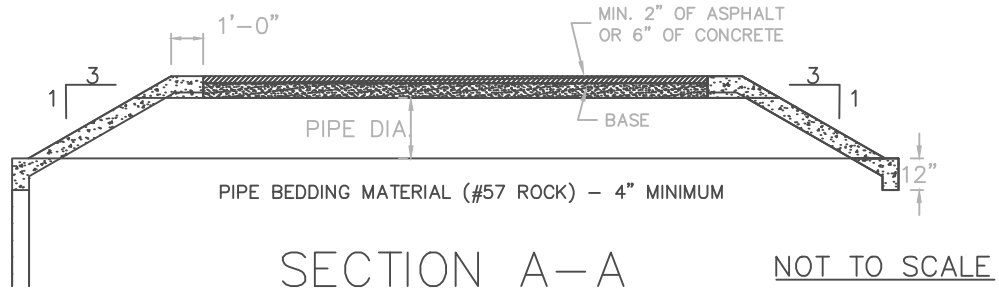
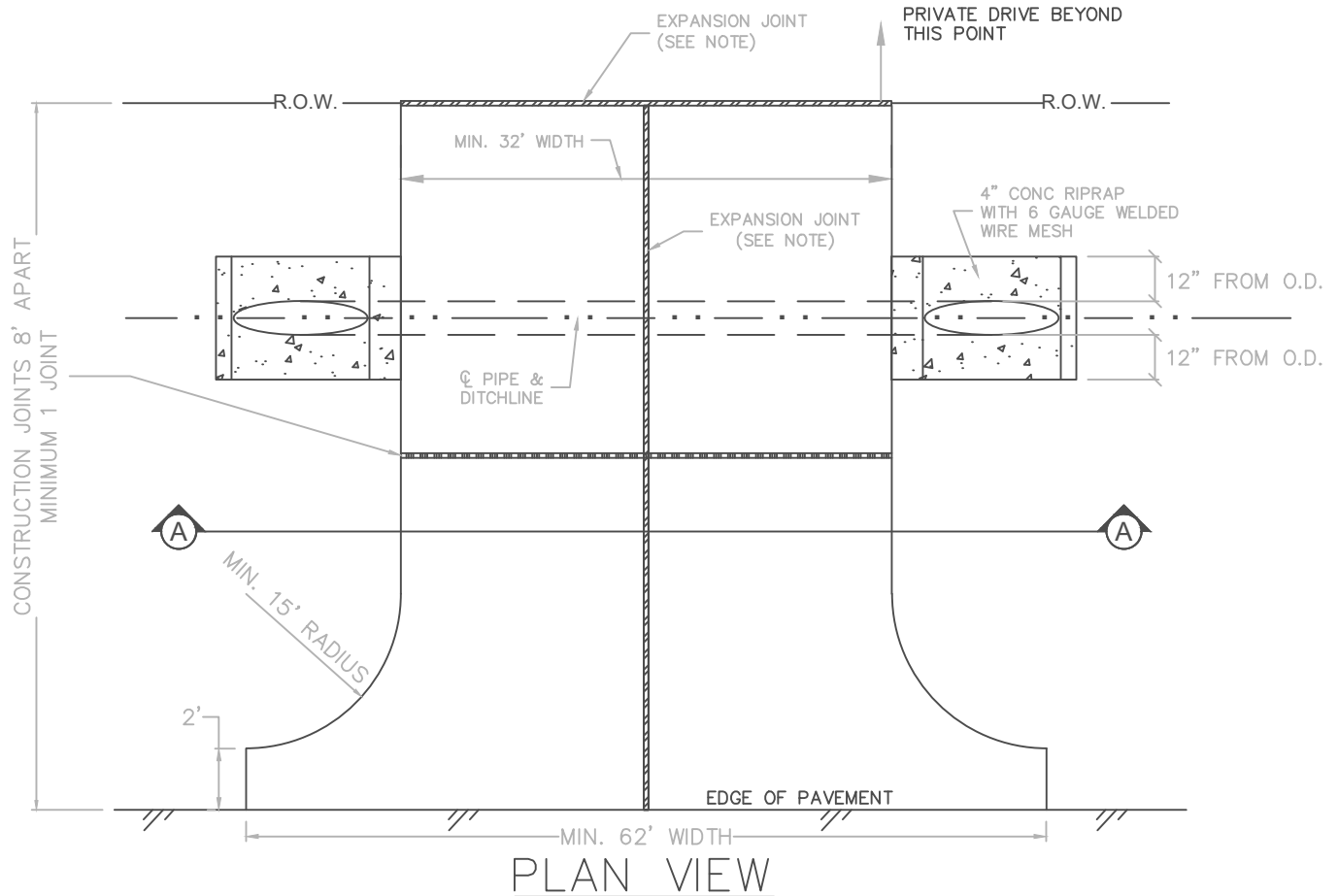


HAYS COUNTY DRIVEWAY STANDARD



NOTES:

- Engineered drawings shall be submitted with commercial driveway permit applications.
- Driveways shall be constructed of either 6" of class "A" concrete reinforced with #3 bars at 18" OC both ways over 2" of compacted base, or 2" of asphalt over 8" of compacted base.
- SET's shall be constructed of 4" of class "A" concrete reinforced with 6ga welded wire mesh with a minimum slope of 3:1.
- Culvert flowline shall match the flowline of the ditch, with min. 4" thickness of pipe bedding material (#57 rock).
- An expansion joint shall be placed at the ROW line with #4 smooth bars placed at mid depth 12" OC.
- Place an expansion joint down the center of driveway, all driveways.
- Special conditions may apply to pipes larger than 18" arched—pipe 21"x15"x24'.

HAYS COUNTY, TEXAS
COMMERCIAL DRIVEWAY
CULVERT—STYLE