



2024

HAYS COUNTY RESOURCE DIRECTORY

Prepared by:
Hays County Health Department



Table of Contents

3

Directory Details

4

Hotlines and Helplines

6

Mental Health Services

General Services

Private Practice Providers

Psychiatric Hospitals

Other

12

Healthcare Resources

Healthcare Assistance

Sexual Health Services

15

Substance Use Services

General Services

Support Groups

18

Housing

Unhoused Resources

21

Social Services

Career and Job Placement

Nutrition and Clothing

Education and Support

Veteran Services

Personal Information Assistance

Healthcare Assistance

Transportation

Legal Assistance

LGBTQIA+ Resources

General Resources

29

Senior Services

General Services

Assisted Living Options

Home Health and Hospice Care

Medical Services

35

Child Welfare Resources

Wellbeing and Health Services

Daycare Options

39

Educational Resources

Trainings and Presentations

Educational Resources

Apps

DIRECTORY DETAILS

Service Options

If a service assists on a sliding scale, is free, or offers telehealth options, you will find the following symbols noted.



Sliding Scale



No Cost



Telehealth

Disclaimer

The sole purpose of this Community Resource Directory is to provide information about services available to the community. Hays County makes no representations, guaranties, or warranties as to the accuracy, completeness, reliability, or suitability of the information contained herein, nor are the resources listed in a particular order.

Hays County shall not be held responsible for any errors or be held liable for the actions of any entity listed in this guide. The inclusion of an entity in the Directory should not be construed as an endorsement by the county.



HOTLINES & HELPLINES



Emergency

Police/Fire/EMS	911
-----------------	-----

Abuse & Assault

Family Violence Legal Line	1-800-374-4673
National Child Abuse Hotline	1-800-422-4453
National Domestic Violence Hotline	1-800-799-7233
National Sexual Assault Hotline	1-800-656-4673
National Teen Dating Abuse Hotline	1-866-331-9474 Text: 22522
Texas Abuse Hotline	1-800-252-5400

Addiction

Alcoholics Resource Center	800-934-9518
Narcotics Anonymous Central Texas	512-480-0004
SAMHSA National Helpline	1-800-662-4357

Crisis & Suicide Prevention

Bluebonnet Trails Crisis Line	800-841-1255
Crisis Text Line	Text TALK to 741-741
Deblin Crisis Line	877-605-5280
Heroes Helpline	833-367-4689
Hill Country Crisis Line	877-466-0660
National Maternal Mental Health	833-852-6262
Suicide and Crisis Lifeline	988
Veterans Crisis Line	988 (press 1)
LGBT Hotline	888-843-5464

Youth

Foster Youth Justice Project (Legal Aid)	1-877-313-3688
National Runaway Safeline	1-800-786-2929
National Teen Dating Abuse	866-331-9474
Teen Pregnancy Hotline	1-800-672-2296
Trevor (LGBTQ Youth) Lifeline	1-866-488-7386

Miscellaneous

American Red Cross Central Texas	800-733-2767
Disaster Assistance (Legal Aid)	866-757-1570
Maternal and Child Health Bureau	1-833-852-6262
National Eating Disorders Association	866-662-1235
Texas Connecting People and Services	211



MENTAL HEALTH RESOURCES



LOCAL MENTAL HEALTH AUTHORITY



[HTTPS://HILLCOUNTRY.ORG/](https://hillcountry.org/)

IDD CENTRALIZED INTAKE LINE: 830-387-5970

KYLE CLINIC: 1300 DACY LN. STE. 120-130 KYLE, TX 78640

SAN MARCOS CLINIC: 1200 N. BISHOP ST. SAN MARCOS, TX 78666

Hill County MHDD serves 19 counties throughout Texas, Hays being one of them. They are the local point of entry for mental health services and provide a variety of care options. No one will be denied services due to inability to pay and a sliding fee scale is offered to those who qualify.

- psychiatric evaluations
- medication management
- 24/7 crisis assessment and intervention
- skills training
- peer support
- youth respite center
- family partner support
- case management
- psychosocial rehabilitation
- supported housing and employment (must qualify)
- children age 3 and up served

Hill County also has an entire division to support individuals who have a diagnosis of IDD. Support plans are individualized to help clients achieve an interdependent life and live to their fullest potential. These services may include in-home, community, and work supports; transportation; behavioral supports, respite, and day habilitation.

General Services

Treatment options to help assess, stabilize, and regulate mental health issues.

BLUEBONNET TRAILS \$

LOCATION(S): Serves Bastrop, Burnet, Caldwell, Fayette, Gonzales, Guadalupe, Lee, and Williamson counties

SERVICES and/or WHO IS ELIGIBLE: Open to ALL. Psychiatry, case management, counseling, benefits application, outpatient groups, hospital discharge and follow up. Community & clinic-based services.

FEES/COST OF SERVICES: Accepts insurance and works with uninsured. Sliding scale available.

HOURS: Monday to Friday: 7:30 a.m. – 5:30 p.m.

CONTACT INFO: INTAKE: 844-309-6385

CRISIS HOTLINE: 800-841-1255

WEBSITE: <https://bbtrails.org/behavioral-health-services/>

CHARLIE HEALTH

LOCATION(S): Virtual

SERVICES and/or WHO IS ELIGIBLE: Treatment for high-acuity mental health conditions.

FEES/COST OF SERVICES: Accepts most major insurances. Copay could be as low as \$0 per session.

HOURS: Admissions Team can be reached 24/7

CONTACT: 512-559-1626

WEBSITE: <https://www.charliehealth.com/>

COMMUNITY COUNSELING & WELLNESS CENTER \$

LOCATION(S): 601 University Dr. San Marcos, TX 78666 (First Floor of the Education Building on TXST campus)

SERVICES and/or WHO IS ELIGIBLE: Offers counseling for a variety of concerns to couples, families, and individuals 3 and older. Counseling is provided by Master's level interns pursuing their degree in counseling and are supervised by professors in the Professional Counseling Program.

FEES/COST OF SERVICES: Fees are based on sliding scale. \$20 and less for those who are unable to afford that price.

HOURS: N/A

CONTACT: 512-245-8349

WEBSITE:

<https://www.txst.edu/clas/professional-counseling/counseling-services/ccwc-sm.html>

DEBLIN HEALTH CONCEPTS

LOCATION(S): Austin, Houston, Dallas, San Antonio, and Hays County

SERVICES and/or WHO IS ELIGIBLE: Open to ALL. Psychiatry, case management, counseling, benefits application, outpatient groups, hospital discharge and follow-up. Telehealth available.

FEES/COST OF SERVICES: Accepts Medicare, Medicaid, private pay, and variety of insurances.

HOURS: Monday to Friday: 9:00 a.m. – 8:00 p.m., Saturday and Sunday: 9:00 a.m. – 1:00 p.m.

INTAKE CONTACT: 713-686-9194

intake@deblinhealthconcepts.com

CRISIS HOTLINE: 877-605-5280

WEBSITE: <https://www.deblincares.com/>

GREATER SAN MARCOS YOUTH COUNCIL ✓

LOCATION(S): 1402/1406 I-35 San Marcos 78666

SERVICES and/or WHO IS ELIGIBLE: Youth and Family Counseling (also available in Spanish). Shelter home for children ages 2-17 who are unable to remain in homes of abuse & neglect. Provides basic needs: mental/social, medical, dental & vision, drug & alcohol assessments, common public education or GED classes, individual counseling, group counseling, life & social skills training, and occupational and speech therapy.

FEES/COST OF SERVICES: Free to Hays families.

HOURS: Monday to Friday: 8:00 a.m. – 10:00 p.m., Saturday to Sunday: 10:00 a.m. – 8:00 p.m., Holidays: 10:00 a.m. – 8:00 p.m.

CONTACT INFO: 512-754-0500, 24/7 crisis line 800-457-0797

WEBSITE: <https://www.gsmyc.org/>

THE HOPELINE ✓

LOCATION(S): Virtual

SERVICES and/or WHO IS ELIGIBLE: Non-profit organization that provides free resources for students and young adults in crisis.

FEES/COST OF SERVICES: Free.

HOURS: 24/7

CONTACT: Contact form found on website.

WEBSITE: <https://www.thehopeline.com/>

INTEGRAL CARE \$

LOCATION(S): 1165 Airport Blvd., Second Floor, Austin, TX 78702

SERVICES and/or WHO IS ELIGIBLE: Open to ALL. Levels of Care 1-4 (psychiatry, case management, counseling, application for benefits, jail diversion bond program), and community & clinic-based services. Psychiatric emergency walk-in services.

FEES/COST OF SERVICES: Accepts insurance and works with uninsured.

HOURS: Monday to Friday: 8 a.m. – 10 p.m., Saturday to Sunday: 10 a.m. – 8 p.m., Holidays: 10 a.m. – 8 p.m.

CONTACT INFO: INTAKE: 844-398-8252

<https://integralcare.org/en/contact/#form>

CRISIS HOTLINE: 512-472-4357, 24/7 availability

WEBSITE: <https://integralcare.org/en/home/>

YES WAIVER ✓

LOCATION(S): Texas HHS

SERVICES and/or WHO IS ELIGIBLE: Youth Empowerment Services Waiver is a 1915(c) Medicaid program that provides intensive services to help children and their families with serious mental, emotional, and behavioral difficulties.

FEES/COST OF SERVICES: Free to those who are eligible.

HOURS: N/A

CONTACT: Hill County MHDD

WEBSITE:

<https://www.hhs.texas.gov/services/mental-health-substance-use/childrens-mental-health/yes-waiver>

Private Practice Providers

CEDAR CREEK ASSOCIATES

LOCATION(S): 300 S. CM Allen Parkway, Bldg #4, San Marcos, TX 78666

SERVICES and/or WHO IS ELIGIBLE: provides community teens, adults, children, couples, and seniors counseling and psychotherapy services.

FEES/COST OF SERVICES: Rates vary.

HOURS: Each therapist has different hours.

CONTACT INFO: 512-396-8540 ext. 1001

WEBSITE: <https://cedarcreekassociates.com/>

COMPROMISO BEHAVIORAL HEALTH \$

LOCATION(S): 102 Suttles Ave. Suite A, San Marcos, TX 78666

SERVICES and/or WHO IS ELIGIBLE: In person and online sessions available. Individual and couples counseling sessions offered in English, Spanish, and Portuguese. Specialized in neurodivergent adults, immigration, racial and cultural trauma.

FEES/COST OF SERVICES: Private pay and accepts Lyra Health EAP.

Limited sliding scale availability.

HOURS: Appointment times vary.

CONTACT INFO:

mgarza@compromisobehavioralhealth.com or 512-798-4402

WEBSITE:

<https://www.psychologytoday.com/us/therapists/maria-garza-san-marcos-tx/818589>

GIVE AN HOUR ✓

LOCATION(S): Various in-person locations and virtual

SERVICES and/or WHO IS ELIGIBLE: provides evidence based, consumer informed therapeutic strategies to those who have experienced human-made trauma. Offers crisis support, crime & violence, mass violence, peer support, rare disease community, mental health tools, and veteran and military support programs.

FEES/COST OF SERVICES: Barrier-free access

HOURS: Each therapist has different hours. Office hours are Monday to Thursday: 8:00 a.m. – 6:00 p.m. ET

CONTACT INFO:

<https://giveanhour.org/contactus/>

WEBSITE: <https://giveanhour.org/>

HEALING PATHS ONLINE COUNSELING \$

LOCATION(S): All virtual

SERVICES and/or WHO IS ELIGIBLE: Telehealth services include medication management and individual counseling sessions. Services are offered in English, Spanish, Korean, and Malayalam.

FEES/COST OF SERVICES: \$90-140 per session, **sliding scale** available and insurance accepted.

HOURS: Each clinician has different hours.

CONTACT INFO: 512-766-4335

WEBSITE:

<https://healingpathsonlinecounseling.com/>

HIATUS WELLNESS \$

LOCATION(S): 1205 Hwy 123, Suite 103, San Marcos, TX 78666 and virtual options offered

SERVICES and/or WHO IS ELIGIBLE: Private therapy practice that specializes in EMDR, Exposure and Response Prevention, life transitions, and general mood disorders. Trauma Conscious Yoga Method sessions, groups, and workshops also offered.

FEES/COST OF SERVICES: \$150 cash rate, some insurance accepted, and **limited sliding scale available through Open Path.**

HOURS: By appointment Monday to Thursday

CONTACT INFO: 512-842-7845

WEBSITE: <https://www.hiatuswellness.com/>

HOPE FAMILY GUIDANCE PLLC \$

LOCATION(S): 1300 Darcy Ln #235, Kyle, TX 78640

SERVICES and/or WHO IS ELIGIBLE:

FEES/COST OF SERVICES: \$110-140 per session out of pocket, multiple insurances accepted, traditional Medicaid and Medicare accepted.

Sliding scale and pro-bono offered on limited basis.

HOURS: Appointment times vary.

CONTACT INFO: 512-262-6020

WEBSITE: <https://www.hfguidance.com/>

INMINDOUT EMOTIONAL WELLNESS CENTER

LOCATION(S): 2003 Medical Pkwy suite c, San Marcos, TX 78666

SERVICES and/or WHO IS ELIGIBLE:

Psychological testing, couples, family, individual and group therapy

FEES/COST OF SERVICES: Not listed.

HOURS: Each clinician has different hours.

CONTACT INFO: 830-730-6090 or info@inmindout.com

WEBSITE: <https://inmindout.com/>

LAVENDER SPACE

LOCATION(S): 100 East San Antonio St., San Marcos, TX 78666

SERVICES and/or WHO IS ELIGIBLE: Private therapy practice that specializes in providing informed and relevant best practices for the LGBTQIA+ community. Also specialize in working with individuals navigating mood disorders, dual diagnosis, and providing a holistic and systems approach. Group sessions are also offered.

FEES/COST OF SERVICES: Does not accept insurance, **sliding scale** available.

HOURS: By appointment

CONTACT INFO: 512-831-6696

WEBSITE: <https://lavenderspaceinc.com/>

LIFESTANCE

LOCATION(S): 151 Stagecoach Trl, Ste. 220 San Marcos, TX 78666

SERVICES and/or WHO IS ELIGIBLE: Telehealth or in-person mental health services.

FEES/COST OF SERVICES: Accepts most major insurances.

HOURS: Monday to Friday: 9:00 a.m. – 5:00 p.m.

CONTACT INFO: 855-385-8893

WEBSITE:

<https://lifestance.com/location/san-marcos-tx-151/>

MICHELE FRANCES PURVIN, LCSW, LCDC AND ASSOCIATES

LOCATION(S): 136 E San Antonio St., Suite 104, San Marcos, TX 78666

SERVICES and/or WHO IS ELIGIBLE: Private therapy practice that specializes in depression, anxiety, trauma, eating disorders, and maternal mental health.

FEES/COST OF SERVICES: \$100-135 per session, discounts available to college students and educators.

HOURS: Evening and weekend hours available

CONTACT INFO: 512-644-9036

WEBSITE: <https://www.michelepurvin.com/>

OPEN PATH PSYCHOTHERAPY COLLECTIVE

LOCATION(S): Various in-person locations and virtual

SERVICES and/or WHO IS ELIGIBLE: Expansive network of inclusive therapists that provide a wide range of specialties offered for groups, families, individuals and couples.

FEES/COST OF SERVICES: There is a one-time membership fee of \$65 to join Open Path and \$30-70 per session (\$30 for student intern).

HOURS: Each therapist has different hours. Office hours are Monday to Thursday: 8:00 a.m. – 6:00 p.m. ET

CONTACT INFO:

<https://openpathcollective.org/contact/> or info@openpathcollective.org

WEBSITE: <https://openpathcollective.org/>

THE SPARROWS COLLECTIVE

LOCATION(S): 647 Seguin Ave, New Braunfels, TX 78130

SERVICES and/or WHO IS ELIGIBLE: Private therapy practice that offers individual sessions, online sessions, intuitive eating, pain reprocessing, and a weekly dialectical behavior therapy group.

FEES/COST OF SERVICES: \$90-125 per session

HOURS: Each therapist has different hours.

Telehealth appointments are available.

CONTACT INFO: 512-522-5467

WEBSITE: <https://thesparrowscollective.com/>

VISIONARY COUNSELING CENTER

LOCATION(S): 112 Cimarron Park Loop, Suite A, Buda, TX 78610

2115 Stephens Pl 400 g, New Braunfels, TX 78130

SERVICES and/or WHO IS ELIGIBLE: Providers offer individual, family, and group counseling. Teens and children also seen.

FEES/COST OF SERVICES: \$50-175 per session based on counselor experience. Reduced rates for active military and veterans.

HOURS: By appointment.

CONTACT INFO: 512-940-1168

WEBSITE:

<https://visionaryfamilycounseling.com/>

Psychiatric Hospitals

AUSTIN OAKS BRANCHES

LOCATION(S): 1407 W. Stassney Ln. Austin, TX 78745, 1009 E. 40th St. Austin, TX 78751, and 1330 Wonder World Dr. Ste. 108, San Marcos, TX 78666

SERVICES and/or WHO IS ELIGIBLE: Multi-level mental health care & treatment for adults and children. Inpatient programs for ages 12+. Outpatient programs for ages 12+. Expressive therapy, medical detox, and women's wellness.

FEES/COST OF SERVICES: Accepts most insurance, Medicare, TRICARE.

HOURS: Hours vary by program. See website for details.

CONTACT INFO: 512-798-4880, Schedule appt online

<https://austinoakshospital.timetap.com/#/>

WEBSITE: <https://austinoakshospital.com/>

AUSTIN STATE HOSPITAL

LOCATION(S): 4110 Guadalupe Austin, TX 78751

SERVICES and/or WHO IS ELIGIBLE: Adults, adolescents & children psychiatric services.

FEES/COST OF SERVICES: Accepts Medicaid and Medicare.

HOURS: 24/7

CONTACT INFO: 512-452-0381

WEBSITE:

<https://www.hhs.texas.gov/services/mental-health-substance-use/state-hospitals/austin-state-hospital>

CROSS CREEK

LOCATION(S): 8402 Cross Park Dr. Austin TX 78754

SERVICES and/or WHO IS ELIGIBLE: Adult and adolescent (11+) in-patient, adult detox, adult intensive outpatient, adult and adolescent partial hospitalization program, senior program (55 and up).

FEES/COST OF SERVICES: Most insurances accepted. Tricare, Medicare & Medicaid.

HOURS: 24/7

CONTACT INFO: 512-549-8021, 512-823-0570, (833) 458-1801 24/7

WEBSITE: <https://www.crosscreekhospital.com/>

GEORGETOWN BEHAVIORAL HEALTH

LOCATION(S): 3101 S. Austin Ave. Georgetown, TX 78626

SERVICES and/or WHO IS ELIGIBLE: Adolescents & adults inpatient for psychiatric evaluation, IOP for adults recovering from MH or SU. MH treatment for adolescents.

FEES/COST OF SERVICES: Accepts most insurance, Medicare & Medicaid.

HOURS: 24/7

CONTACT INFO: 877-500-9151

WEBSITE:

<https://www.georgetownbehavioral.com/>

ROCKSPRINGS

LOCATION(S): 1335 East Whitestone Blvd. Suite Z200, Cedar Park, TX 78613 and 700 Southeast Inner Loop, Georgetown, TX 78626

SERVICES and/or WHO IS ELIGIBLE: Adults & adolescents MH and SU programs, partial hospitalization and intensive outpatient, detox program, PTSD.

FEES/COST OF SERVICES: Accepts most insurance and Medicare. Self-pay available.

HOURS: Georgetown: 24/7, Cedar Park: Monday to Friday: 8:00 a.m. - 5:00 p.m.

CONTACT INFO: Georgetown: 512-819-9400, Cedar Park: 737-808-1700

WEBSITE: <https://rockspringshealth.com/>

SAN MARCOS BRANCHES IOP

LOCATION(S): 1330 Wonder World Dr. Ste.108, San Marcos, TX 78666

SERVICES and/or WHO IS ELIGIBLE: Group therapy, medication management, exp learning, and chemical dependence education for teens ages 12-17 & young adults ages 18-25.

FEES/COST OF SERVICES: Accepts most insurance or self-pay.

OUTPATIENT HOURS: 9:00 a.m. - 2:00 p.m.

CONTACT INFO: 830-875-0908, Walk-ins, Schedule appt online

<https://austinoakshospital.timetap.com/#/>

WEBSITE:

<https://austinoakshospital.com/programs-and-services/adult-programs/partial-hospitalization-php/>

Other

EATING RECOVERY CENTER

LOCATION(S): 12221 Renfert Way #250, Austin, TX 78758

SERVICES and/or WHO IS ELIGIBLE: ACT, CRT and DBT therapies for children, adolescent, and adults with eating disorders. Provides on-site intensive outpatient, in-patient, intensive treatment unit, residential, and partial hospitalization.

FEES/Cost OF SERVICES: Accepts major insurance plans.

HOURS: Monday to Friday: 6:00 a.m. - 7:00 p.m., Saturday to Sunday: 8:00 a.m. - 4:00 p.m.

CONTACT INFO: 512-814-8255

WEBSITE:

<https://www.eatingrecoverycenter.com/>

HAYS COUNTY NUTRITION SPECIALISTS

LOCATION(S): 601 W. Center St., Kyle, TX 78640

SERVICES and/or WHO IS ELIGIBLE: Offers evidence-based nutrition therapy and individualized support for eating disorders

FEES/Cost OF SERVICES: Major insurances accepted, Out of pocket for Initial Assessments (75-90 minutes): \$180, Follow-up Appointments (up to 55 minutes): \$120. Scholarship application available on website.

HOURS: Monday to Friday: 8:00 a.m. - 5:00 p.m.

CONTACT INFO: 512-731-2015

WEBSITE: <https://www.haysnutrition.com/>

HEALTHCARE RESOURCES



Healthcare Assistance

COMMUNICARE FEDERALLY QUALIFIED HEALTH CENTER (FQHC)

LOCATION(S): Hays and Bexar Counties
SERVICES and/or WHO IS ELIGIBLE: Medical Services for low-income/uninsured individuals.
FEES/COST OF SERVICES: Accepts insurance and offers **sliding scale fee**.
HOURS: Monday to Friday: 8:00 a.m. – 5:00 p.m.
INTAKE CONTACT: 210-233-7000
WEBSITE: [communicaresa.org](https://www.communicaresa.org)

INDIGENT HEALTH SERVICES

LOCATION(S): 101 Thermon Dr. San Marcos, TX 78666
SERVICES and/or WHO IS ELIGIBLE: Health services for those deemed indigent and not receiving Medicare/Medicaid and does not meet specific income criteria.
FEES/COST OF SERVICES: N/A
HOURS: Monday to Friday: 8:00 a.m. – 5:00 p.m.
INTAKE CONTACT: 512-393-5520
POINT OF CONTACT: Amelia Garcia, amelia.garcia@co.hays.tx.us 512-393-5520
WEBSITE: <https://hayscountytexas.com/departments/local-health-department/indigent-health-care-program/>

MEDICAL ASSISTANCE PROGRAM (MAP)

LOCATION(S): Travis County ONLY
SERVICES and/or WHO IS ELIGIBLE: Medical coverage for low income/uninsured individuals. Only accepted at CommunityCare & People's Clinic in Austin.
FEES/COST OF SERVICES: Only accepts insurance
HOURS: Monday to Friday: 8:00 a.m. – 5:00 p.m.
INTAKE CONTACT: <https://ola.veritysource.com/austin>
WEBSITE: <https://www.centralhealth.net/map/>

TXST HEALTH STUDENT HEALTH CENTER

LOCATION(S): 298 Student Center Drive and 1347 Thorpe Lane San Marcos, TX 78666
SERVICES and/or WHO IS ELIGIBLE: Healthcare services to Texas State students for preventative, hormone therapy, counseling, sports medicine, STD clinic, and immunizations.
FEES/COST OF SERVICES: Accepts insurance or cash.
STUDENT CENTER DRIVE LOCATION HOURS: Monday, Wednesday, Friday: 7:30 a.m. – noon, 1:00 p.m. – 5:00 p.m., Tuesday, Thursday: 9:00 a.m. – noon, 1:00 p.m. – 5:00 p.m.
THORPE LANE LOCATION HOURS: Monday, Wednesday, Friday: 8:00 a.m. – 5:00 p.m., Tuesday, Thursday: 9:00 a.m. – 5:00 p.m.
CALL FOR APPT: 512-245-2161
WEBSITE: <https://www.healthcenter.txst.edu/>

Sexual Health Services

AUSTIN PUBLIC HEALTH - SEXUAL HEALTH CLINIC

LOCATION(S): 15 Waller St., Austin, TX 78702
SERVICES and/or WHO IS ELIGIBLE: Testing, diagnosis, and treatment of STIs. HIV care, PrEP, and PEP for eligible individuals.
FEES/COST OF SERVICES: Testing costs \$20, treatment cost varies. Accepts insurance.
HOURS: Monday to Friday: 8:00 a.m. – 5:00 p.m.
CONTACT: 512-972-5430
WEBSITE: <https://www.austintexas.gov/departments/sexual-health-clinic>

COMMUNITY HEALTH SERVICES

LOCATION(S): 215 Reimer Ave., San Marcos, TX 78666
SERVICES and/or WHO IS ELIGIBLE: Comprehensive reproductive health care, including birth control, exams, pregnancy testing, STI/HIV services, and routine lab tests.
FEES/COST OF SERVICES: Free for uninsured individuals, accepts insurance.
HOURS: Monday to Friday: 8:00 a.m. – 5:00 p.m.
INTAKE CONTACT: 512-393-5520
POINT OF CONTACT: Gabriela Guel, Gabriela.Guel@hayscountytexas.gov, 512-393-1162
WEBSITE: <https://www.communityaction.com/health>

HAYS COUNTY HEALTH DEPARTMENT

LOCATION(S): 101 Thermon Dr. San Marcos, TX 78666
SERVICES and/or WHO IS ELIGIBLE: Confidential partner notifications, Sexually Transmitted Infection (STI) treatment, service referrals, and vaccinations.
FEES/COST OF SERVICES: N/A
HOURS: Monday to Friday: 8:00 a.m. – 5:00 p.m.
CONTACT: 512-393-5520
POINT OF CONTACT: Gabriela Guel, Gabriela.Guel@hayscountytexas.gov, 512-393-1162
WEBSITE: <https://hayscountytexas.com/departments/local-health-department/>

KIND CLINIC

LOCATION(S): South Austin and San Antonio locations
SERVICES and/or WHO IS ELIGIBLE: Sexual health services in a safe and supportive environment regardless of race, creed, gender identity and expression, sexual orientation, or ability to pay.
FEES/COST OF SERVICES: N/A
HOURS: Varies by clinic. See website.
CONTACT: 1-833-937-5463
WEBSITE: <https://kindclinic.org/>

PLANNED PARENTHOOD \$

LOCATION(S): 1823 E 7th St., Austin, TX 78702

SERVICES and/or WHO IS ELIGIBLE: Maternal health services, family planning services, HIV services, STD testing & treatment, and vaccines.

FEES/COST OF SERVICES: Accepts insurance and offers **sliding scale fee**.

HOURS: Every other Monday: 9:00 a.m. – 5:00 p.m., Tuesday: 11:00 a.m. – 7:00 p.m., Wednesday through Friday: 9:00 a.m. – 5:00 p.m.

CONTACT: 512-795-4142

WEBSITE:

[https://www.plannedparenthood.org/health-center/texas/austin/78702/downtown-austin-health-center-2396-91620?](https://www.plannedparenthood.org/health-center/texas/austin/78702/downtown-austin-health-center-2396-91620?utm_campaign=downtown-austin-health-center&utm_medium=organic&utm_source=local-listing)

[utm_campaign=downtown-austin-health-center&utm_medium=organic&utm_source=local-listing](https://www.plannedparenthood.org/health-center/texas/austin/78702/downtown-austin-health-center-2396-91620?utm_campaign=downtown-austin-health-center&utm_medium=organic&utm_source=local-listing)

VIVENT HEALTH \$

LOCATION(S): 104 E Highland Mall Blvd., Suite 100, Austin, TX 78752

SERVICES and/or WHO IS ELIGIBLE: HIV treatment and management, PrEP, HIV & STI testing, STI treatment, HEP-C treatment, vaccines, dental, counseling. Financial assistance programs.

FEES/COST OF SERVICES: Sliding scale.

HOURS: Monday, Wednesday, Thursday, and Friday: 8:00 a.m. – 5:00 p.m., Tuesday: Noon – 5:00 p.m.

CONTACT: 512-458-2437

WEBSITE: <https://viventhealth.org/>

SUBSTANCE USE RESOURCES



BEE CAVE RECOVERY

LOCATION(S): 1114 Lost Creek Blvd., Suite G-40
Austin, TX 78746

SERVICES and/or WHO IS ELIGIBLE: Drug & alcohol use 12-step classes for 17+. Intensive outpatient therapy, process group therapy, psychoeducation, meditation. Individual & family counseling, aftercare therapy virtual & in-person.

FEES/COST OF SERVICES: Accepts Medicaid, self-pay with/financial plan or **sliding scale** eligible to SAMHSA grant qualifiers (must reside in Region 7).

HOURS: By appointment.

CONTACT INFO: Denise Anderson,
denise@beecavererecovery.org

INTAKE CONTACT: 737-222-5155,
info@beecavererecovery.org

WEBSITE: <https://www.beecavererecovery.org/>

CENIKOR

LOCATION(S): 2410 West Howard Ln. Austin, TX 78728

SERVICES and/or WHO IS ELIGIBLE: Adults with substance use disorder. Inpatient detox or residential treatment, in-person or telehealth outpatient treatment, in-person or telehealth medicated assistant treatment, and aftercare recovery supportive services.

FEES/COST OF SERVICES: Accepts private & VA insurance, self-pay, and uninsured.

HOURS: 24/7

POINT OF CONTACT AUSTIN: Tiffany Nunez,
TNunez@cenikor.org

INTAKE CONTACT AUSTIN: 737-300-2968

WEBSITE: <https://www.cenikor.org/>

CENIKOR Prevention

LOCATION(S): 1901 Dutton Dr. San Marcos, TX 78666

SERVICES and/or WHO IS ELIGIBLE: Prevention education. Youth Recovery Community (YRC) for ages 13-21, includes support groups and leadership activities. Community Awareness, Intervention, and Mobilization (Project AIM), includes case management for 18+. Medication Assisted Treatment available.

FEES/COST OF SERVICES: Accepts private & VA insurance, self-pay, and uninsured. FREE to qualifying Hays County residents

HOURS: Monday to Friday: 8 a.m. - 5 p.m.

POINT OF CONTACT SAN MARCOS: Carla Merritt,
cmerritt@cenikor.org

INTAKE CONTACT SAN MARCOS: 512-396-7695
EXT. 5201

WEBSITE: <https://www.cenikor.org/>

EVOKE WELLNESS

LOCATION(S): 1106 I-35 N Frontage Rd. San Marcos, TX 78666

SERVICES and/or WHO IS ELIGIBLE: Addiction and substance use disorder or co-occurring mental health diagnoses. Detox, residential treatment programs, partial hospitalization programs (PHP), intensive outpatient programs (IOP), aftercare planning, family therapy, individual counseling, group therapy sessions, relapse prevention education, and more

FEES/COST OF SERVICES: Accepts private insurance and payment plans.

HOURS: 24/7

POINT OF CONTACT: Sean Flynn, 617-320-0805
sean.flynn@evokewellness.com

INTAKE CONTACT: 888-450-2285, and online form

WEBSITE: <https://evokewellnesstx.com/>

OSAR THROUGH BLUEBONNET TRAILS

LOCATION(S): 1009 North Georgetown Street, Round Rock, TX 78664

SERVICES and/or WHO IS ELIGIBLE: Assessment & referral for those seeking substance use services in region 7 of central Texas. Short-term case management and up to 6 motivational interviewing sessions

FEES/COST OF SERVICES: Assistance to uninsured or help cover co-pay.

HOURS: Monday-Friday 7:30 a.m. - 5:30 p.m. short-term case management and up to 6 motivational interviewing sessions.

INTAKE CONTACT: 1-844-309-6385

WALK IN CLINIC LOCATIONS FOR ASSESSMENTS:

AUSTIN STATE HOSPITAL: 4110 Guadalupe St., Bld. #785 Austin, TX 78751

HOURS: Monday: 9:00 a.m. - 3:00 p.m.

NORTH AUSTIN FOUNDATION: 1000 Prairie Trail, Austin TX 78758

HOURS: Wednesday: 9:00 a.m. - 3:00 p.m.

WEBSITE: <https://bbtrails.org/substance-use-services/>

OUTSIDERS ANONYMOUS

LOCATION(S): 324 Riverwalk Dr. Ste. 218 San Marcos, TX 78666

SERVICES and/or WHO IS ELIGIBLE: Hays County and surrounding cities residents. Gym access, workout classes, running groups, race training, deliberate cold therapy, support groups, peer support specialists (recovery & PTSD), and community events each month.

FEES/COST OF SERVICES: FREE

HOURS: Monday to Friday: 8:00 a.m. - 7:00 p.m., Saturday: 11:00 a.m. - 4:00 p.m.

POINT OF CONTACT: Adam Holt,
adam@outsidersanonymous.org,
979-587-1443

INTAKE CONTACT:

info@outsidersanonymous.org, online form, or walk-in

WEBSITE:

<https://www.outsidersanonymous.org/>

RECOVERY UNPLUGGED

LOCATION(S): 14109 FM 969, Austin, TX 78724

SERVICES and/or WHO IS ELIGIBLE: Detox, residential, mental health intensive outpatient (IOP), Substance Use Disorder IOP, Virtual IOP, partial hospitalization program and dual-diagnosis care.

FEES/COST OF SERVICES: Accepts insurance.

HOURS: 24/7

AUSTIN INTAKE CONTACT: 855-534-4289

DETOX: 512-562-0622

REHAB: 512-562-0608

RESIDENTIAL TREATMENT CENTER: 512-562-0667

POINT OF CONTACT: Ryan Spencer, 512-534-5159, ryan.spencer@recoveryunplugged.com

WEBSITE:

<https://www.recoveryunplugged.com/location/s/austin/>

RIGHT STEP RECOVERY

LOCATION(S): 440 Fischer Store Rd. Wimberley, TX 78676

SERVICES and/or WHO IS ELIGIBLE: 18+, individual, group, family drug and alcohol addiction, mental health disorders. Inpatient detox and rehab, virtual intensive outpatient program, aftercare and alumni recovery program, recreational therapy.

FEES/COST OF SERVICES: Accepts insurance and managed Medicaid.

HOURS: 24/7

CONTACT: 817-968-5837

ADMISSIONS/INSURANCE/CRISIS HOTLINE: 844-806-1488

Website:

<https://www.promises.com/promises-drug-addiction-treatment-centers/the-right-step-hill-country-tx-residential-drug-rehab-center/>

TEXAS INTEGRATED COMMUNITY OPIOID NETWORK (ICON)

LOCATION(S): Virtual

SERVICES and/or WHO IS ELIGIBLE: Referral services for adults and youth needing substance use recovery, education, harm reduction, and prevention services.

FEES/COST OF SERVICES: Will accept those without insurance, **sliding scale fee**

HOURS: 24/7

INTAKE CONTACT: 833-367-4689

POINT OF CONTACT: Katelyn Rosales, katelyn.n.rosales@uth.tmc.edu, 512-627-0124

Support Groups

Download the Meeting Guide App to stay up to date on support meetings near you.

AA MEETING BUDA GROUP

LOCATION(S): 2315 FM 967, Buda, TX 78610
The Living Word Lutheran Church

SERVICES and/or WHO IS ELIGIBLE: Closed Alcoholics Anonymous Meetings

FEES/COST OF SERVICES: Free

HOURS: Monday to Sunday: 7:00 p.m.

Website:

<http://www.area68district2.org/district-2-meetings.html>

AA MEETING KYLE THE PROMISES

LOCATION(S): 701 Roland Ln., Kyle, TX 78640

SERVICES and/or WHO IS ELIGIBLE: Open Alcoholics Anonymous Meetings

CONTACT: 866-504-6974

FEES/COST OF SERVICES: Free

HOURS: Monday, Tuesday, Thursday: 6:00 p.m.

AA MEETING RIVER GROUP SAN MARCOS

LOCATION(S): 501 Broadway St, San Marcos, TX 78666

SERVICES and/or WHO IS ELIGIBLE: Closed & Open Alcoholics Anonymous Meetings

FEES/COST OF SERVICES: Free

HOURS: Wednesday: Noon, 5:30 p.m., 8:00 p.m.

Website:

<http://www.area68district2.org/district-2-meetings.html>

CELEBRATE RECOVERY

LOCATION(S): 1401 Davis Lane San Marcos, TX 78666

SERVICES and/or WHO IS ELIGIBLE: 12-step Christ-centered recovery program (child care available up to age 12)

CONTACT: 833-274-7463

FEES/COST OF SERVICES: Free

HOURS: Friday: 6:30 - 9:00 p.m.

Website:

<https://hillcountrychurch.net/ministries/celebrate-recovery>

HOUSING RESOURCES



A TO Z GROUP HOME

LOCATION(S): 340 N. Sam Houston Pkwy E., Suite 205, Houston, TX 77060 (has homes in Buda & Canyon Lake)

SERVICES and/or WHO IS ELIGIBLE: Housing, psychosocial rehab, substance use, peer support & psychiatric support and treatment.

FEES/COST OF SERVICES: Accepts insurance (private, Medicaid or Medicare).

HOURS: Monday to Friday: 8:00 a.m. – 5:00 p.m., Saturday to Sunday by appointment.

INTAKE CONTACT: 832-328-8954, info@atozhealthcareservices.com

POINT OF CONTACT: Abby Ayorinde, ayorinde@atozhealthcareservices.com

WEBSITE: <https://atozhealthcareservices.net/>

BR3T HOUSING STABILITY SERVICES (HSS)

LOCATION(S): Best Budget Inn 903, IH35 San Marcos, TX 78666

SERVICES and/or WHO IS ELIGIBLE: Traditional housing, case management on-site for housing, and rental assistance to Hays County residents

FEES/COST OF SERVICES: N/A

HOURS: Monday to Friday: 9:00 a.m. – 1:00 p.m.

INTAKE CONTACT: 512-256-0269, <https://br3t.org/hssapplication/>

POINT OF CONTACT: Elizabeth Wills 512-522-4453, elizabeth.wills@br3t.org

WEBSITE: <https://br3t.org/hss/>

FRONT STEPS

LOCATION(S): 4507 North I35, Austin, TX 78722

SERVICES and/or WHO IS ELIGIBLE: Provides temporary shelter and permanent supportive housing program. Provides case management, and supportive services for veterans. Different programs have specific eligibility requirements.

FEES/COST OF SERVICES: N/A

HOURS: Monday to Sunday: 8:00 a.m. – 9:00 p.m.

CONTACT: info@frontsteps.org, 512-696-1484, Eligibility info: <https://frontsteps.org/first-steps/> and <https://frontsteps.org/permanent-supportive-housing-program/>

WEBSITE: <https://frontsteps.org/>

HAYS CALDWELL WOMEN'S CENTER

SERVICES and/or WHO IS ELIGIBLE: 24/7 crisis hotline and hospital response, transitional housing and emergency family shelter, sexual assault and abuse services, Free counseling, personal and legal advocacy, community education and violence prevention programs. Bilingual services available. ✓

FEES/COST OF SERVICES: N/A

HOURS: Monday to Friday: 9:00 a.m. – 4:30 p.m.

INTAKE CONTACT: 512-396-4357 OR 800-700-4292, 24/7 HELPLINE

POINT OF CONTACT: Melissa Rodriguez, mrodriguez@hcwc.org, 512-396-3404

WEBSITE: hcwc.org

SOUTHSIDE COMMUNITY CENTER ✓

LOCATION(S): 518 S Guadalupe St, San Marcos, TX 78666

SERVICES and/or WHO IS ELIGIBLE: Transitional shelter up to 3 months, food/bill assistance, laundry & showers for low-income individuals. Apply on-site. Must pass drug/alcohol screening & sign 30-day stay contract.

FEES/COST OF SERVICES: N/A

HOURS: Monday to Friday: 8:00 a.m. – noon, 1:00 p.m. – 5:00 p.m.

DAILY FOOD SERVICE: Monday to Sunday: 4 p.m.

INTAKE CONTACT: Contact Deborah Villalpondo 512-392-6694, djvsouthside@gmail.com

POINT OF CONTACT: Deborah Villalpondo

WEBSITE:

<https://www.southsidecommunitycenter.org/shelter>

THE HORTON HOUSE

LOCATION(S): 310 Smith Lane, San Marcos TX, 78666, 320 Smith Lane, San Marcos, TX 78666, and 322 Smith Lane, San Marcos, TX 78666

SERVICES and/or WHO IS ELIGIBLE: Unlimited sober living stay for men. Counseling, AA, NA & bible study

FEES/COST OF SERVICES: \$550/month. No insurance accepted

HOURS: Saturday to Sunday: 8:00 a.m. – 5:00 p.m.

INTAKE CONTACT:

<https://thehortonhouse.com/application> or emailed to

housemanager.hortonhouse@gmail.com, 512-214-8319

POINT OF CONTACT: Erin Abel, 512-557-8443 erin@abelityllc.com, Donation pickup/drop off: Ernest, 512-667-9298

WEBSITE: <https://thehortonhouse.com/>

THE HOUSING AUTHORITY OF AUSTIN

LOCATION(S): 1124 S I-35 Frontage Rd, Austin, TX 78704

SERVICES and/or WHO IS ELIGIBLE: Low-income individuals & families for public & subsidized housing, and section 8. Scholarship opportunities avail. Requires SS#, D.O.B, & est gross income.

FEES/COST OF SERVICES: N/A

HOURS: Monday to Friday: 8:00 a.m. – 5:00 p.m.

INTAKE CONTACT:

<https://www.hacanet.org/residents/welcome/>

CONTACT INFO: 512-477-4488,

info@hacanet.org

WEBSITE: <https://www.hacanet.org>

THE HOUSING AUTHORITY OF SAN MARCOS

LOCATION(S): 1201 Thorpe Ln, San Marcos, TX 78666

SERVICES and/or WHO IS ELIGIBLE: Low-income, families, disabled and elderly needing public housing, application & voucher assistance, youth development, case management, support groups, educational resources and job training. Need birth cert, SS card, ID, and proof of income.

FEES/COST OF SERVICES: N/A

HOURS: Monday to Thursday: 8:30 a.m. – 6:00 p.m., Friday: 8:30 a.m. – noon

APPLICATION FORM: <https://smpha.org/wp-content/uploads/2020/04/SMHA-PH-Application-Fillable-11-15-17-updated.pdf>

CONTACT: 512-353-5058

POINT OF CONTACT: Lana Wagner, lane@smpha.org

WEBSITE: <https://smpha.org/>

THE VIBE

LOCATION(S): 145 Coers Dr. Ste. 4, San Marcos, TX 78666

SERVICES and/or WHO IS ELIGIBLE: People in long-term recovery (6mths+) from drugs & alcohol. Sober living, yoga, meditation, support groups & meetings.

FEES/COST OF SERVICES: \$300 deposit and 1st month's rent (\$1,100 for private room, \$700 for shared room).

HOURS: Monday to Sunday: 8:00 a.m. – 9:00 p.m.

CONTACT: 512-934-1277

POINT OF CONTACT: Stephanie Pelletier, 512-934-1277, pelletierforhire@gmail.com

WEBSITE: <https://www.liveinthevibe.com/>

Unhoused Resources

Below are faith-based organizations of the Hays County Homeless Coalition that offer assistance to the community as able.

CYPRESS CREEK CHURCH ✓

LOCATION(S): 211 Stillwater, Wimberley, TX 78676

SERVICES and/or WHO IS ELIGIBLE: degrees/certifications, spiritual assistance, social services case management, support groups, mental health education, youth mental health services

FEES/COST OF SERVICES: N/A

HOURS: N/A

CONTACT: 512-847-1222

WEBSITE: <https://cypresscreekchurch.com/>

FIRST BAPTIST CHURCH ✓

LOCATION(S): 325 W. McCarty Ln. San Marcos, TX 78666

SERVICES and/or WHO IS ELIGIBLE: Gas assistance, home expense assistance/repairs, spiritual assistance, music classes

FEES/COST OF SERVICES: N/A

HOURS: N/A

CONTACT: 512-392-3377

WEBSITE: www.sanmarcosfbc.org

THE SOCIETY OF ST. VINCENT DE PAUL ✓

LOCATION(S): 624 E. Hopkins St. San Marcos, TX 78666

SERVICES and/or WHO IS ELIGIBLE: Gas assistance, ID/documentation assistance, clothing, diapers/infant supply, furniture/home goods, toiletries/hygiene products, emergency food, emergency housing, rent/utilities assistance, spiritual assistance

FEES/COST OF SERVICES: N/A

HOURS: N/A

CONTACT: 512-353-7394

WEBSITE: <https://ssvpusa.org/>

FIRST LUTHERAN CHURCH ✓

LOCATION(S): 130 W Holland St. San Marcos, TX 78666

SERVICES and/or WHO IS ELIGIBLE: Gas assistance, clothing, diapers/infant supplies, furniture/home goods, toiletries/hygiene products, school supplies, emergency food, housing case management, spiritual assistance

FEES/COST OF SERVICES: N/A

HOURS: N/A

CONTACT: 512-392-2064

WEBSITE: WWW.FLCM.org

FIRST CHRISTIAN CHURCH ✓

LOCATION(S): 3105 RR12, San Marcos TX 78666

SERVICES and/or WHO IS ELIGIBLE: Clothing, diapers/infant supplies, emergency food, school meals, spiritual assistance

FEES/COST OF SERVICES: N/A

HOURS: N/A

CONTACT: 512-396-1926

WEBSITE: www.fcc-sm.org

FIRST PRESBYTERIAN CHURCH ✓

LOCATION(S): 410 W Hutchison St, San Marcos, Tx 78666

SERVICES and/or WHO IS ELIGIBLE: Gas assistance, home expense assistance/repairs, rent/utility assistance, spiritual assistance

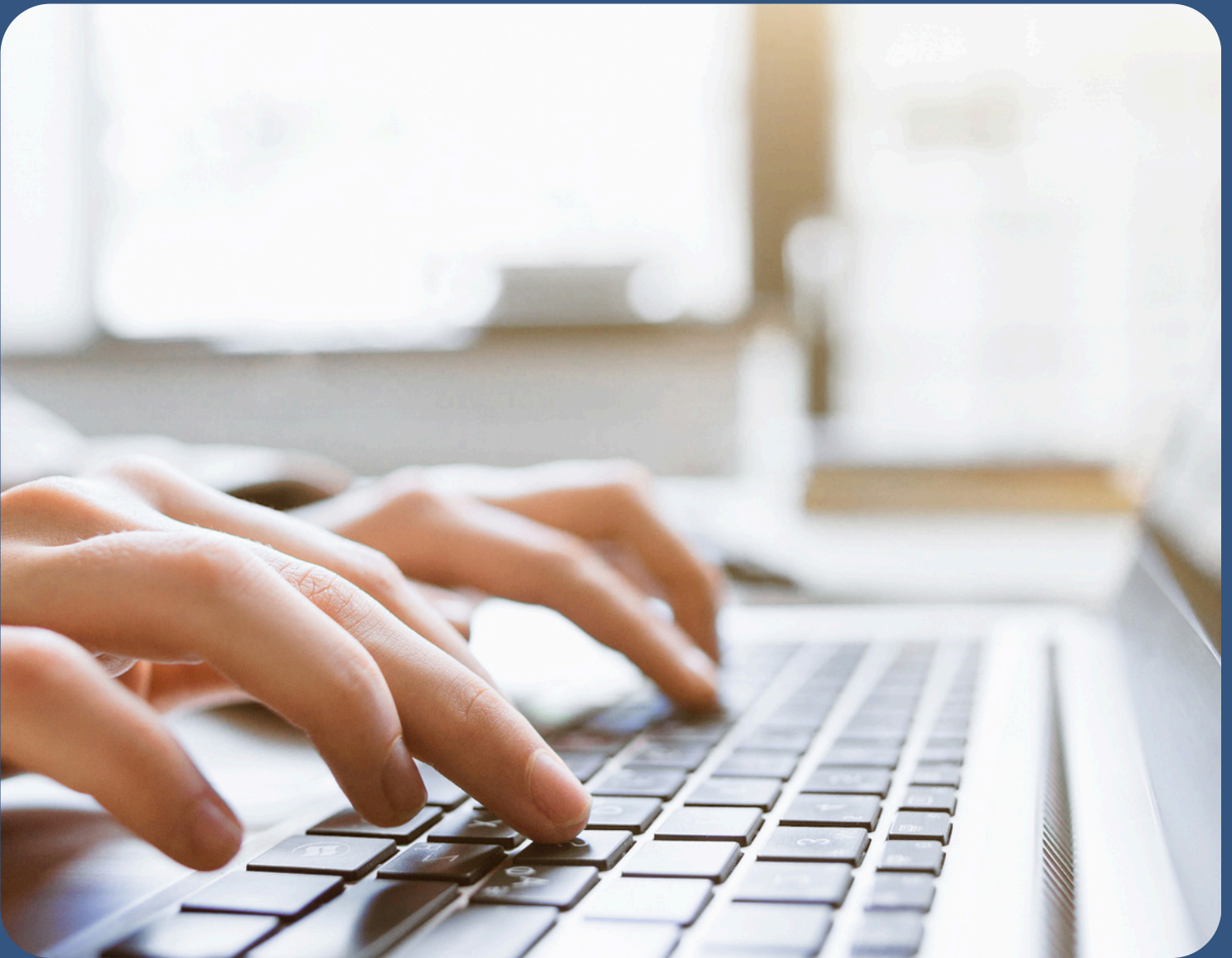
FEES/COST OF SERVICES: N/A

HOURS: N/A

CONTACT: 210-818-2343

WEBSITE: fpcsanmarcos.org

SOCIAL SERVICES



Career Training

COMMUNITY ACTION

LOCATION(S): 215 S Reimer Ave #130, San Marcos, TX 78666

SERVICES and/or WHO IS ELIGIBLE: Adult education, career training, utility assistance, Head Start (ages 0-5), and health services to low-income individuals & families.

FEES/COST OF SERVICES: N/A

HOURS: Monday to Friday: 8:00 a.m. – noon, 1:00 – 5:00 p.m.

INTAKE CONTACT: 512-392-1161, visit the website to access applications quick links

WEBSITE: <https://www.communityaction.com/>

GARY JOB CORP

LOCATION(S): 2800 Airport Highway 21, San Marcos, TX 78667

SERVICES and/or WHO IS ELIGIBLE: High school diploma and job skills w/training opportunities for low-income individuals ages 16-24.

FEES/COST OF SERVICES: N/A

HOURS: Monday to Friday: 8:00 a.m. – 3:00 p.m.

INTAKE CONTACT: 512-396-6652, students: <https://gary.jobcorps.gov/contact/students> or parents/supporter:

<https://gary.jobcorps.gov/contact/parents>

WEBSITE: <https://gary.jobcorps.gov/>

GOODWILL

LOCATION(S): Offices in Cedar Park, Georgetown, Round Rock, Austin, Kyle & San Marcos

SERVICES and/or WHO IS ELIGIBLE: Job training and career navigation, education resources and Goodwill careers (placement, paid work experience/internship). Work program for single parents, low-income & those who are unemployed.

FEES/COST OF SERVICES: N/A

HOURS: Varies by location

INTAKE CONTACT: 512-637-4580,

intake@goodwillcentraltexas.org ; Intake Form

WEBSITE:

<https://www.goodwillcentraltexas.org/>

ON POINT RE-ENTRY

LOCATION(S): Various locations throughout Austin

SERVICES and/or WHO IS ELIGIBLE: Job training & referrals, and community provider trainings to judicially impacted individuals.

INTAKE CONTACT: 512-877-3700 and 512-947-0598, info@onpointentry.org

WEBSITE: <https://www.onpointreentry.org/>

TEXAS WORKFORCE COMMISSION

LOCATION(S): Offices in San Marcos, New Braunfels, Lockhart & Seguin

SERVICES and/or WHO IS ELIGIBLE: Job training, unemployment benefits, education resources and careers at TWF for veterans, disabled and those who are unemployed

FEES/COST OF SERVICES: N/A

HOURS: Monday to Friday: 8:00 a.m. – 5:00 p.m.

EMPLOYMENT APPLICATION:

<https://www.twc.texas.gov/sites/default/files/busops/docs/state-of-texas-applications-e-133-twc.pdf>

WEBSITE: <https://workforcesolutionsrca.com/>

LIFE WORKS Austin

LOCATION(S): 835 North Pleasant Valley Road, Austin, TX, 78702 and 3700 S. 1st St. Austin, TX 78704

SERVICES and/or WHO IS ELIGIBLE: Housing interventions, skills training & development services, counseling, case management for youth, teens, and young adults.

FEES/COST OF SERVICES: Only accepts insurance

HOURS: N. Pleasant Valley: Monday to Thursday: 8:30 a.m. – 8:00 p.m., & S. 1st St.: Monday to Thursday: 8:30 a.m. – 8:00 p.m., Friday: 8:30 a.m. – 5:00 p.m., Saturday: 9:00 a.m. – 1:00 p.m. Youth Resource Center: Monday to Thursday: Noon – 4:00 p.m.

CONTACT: 512-735-2400, 512-473-9125, basic support needs assessment during Monday to Thursday: 10:00 a.m. – 4:00 p.m., housing program referrals Monday to Thursday: 11:00 a.m. – 3:00 p.m.

CRISIS CONTACTS: Psychiatry: 512-472-4357, Suicide prevention: 800-273-8255, Abuse/Neglect: 800-252-5400

WEBSITE: <https://www.lifeworksaustin.org/>

Nutrition & Clothing

BOBCAT BOUNTY ✓

LOCATION(S): Family and Consumer Sciences Building Room 188

SERVICES and/or WHO IS ELIGIBLE: On-campus, student-run food pantry for Texas State students in need.

FEES/COST OF SERVICES: Free

HOURS: Monday: 5:30 p.m. – 7:00 p.m.

CONTACT: 512-245-2155 or bobcatbounty@txstate.edu

WEBSITE: <https://bobcatbounty.txst.edu/>

HAYS COUNTY AGRILIFE EXTENSION

LOCATION(S): 200 Stillwater Rd., Ste. 102, Wimberley, 78676

SERVICES and/or WHO IS ELIGIBLE: Provides educational materials, help families plan nutritious meals and manage resources.

FEES/COST OF SERVICES: N/A

HOURS: Monday to Thursday: 8:00 a.m. – 5:00 p.m., Friday: 8:00 a.m. – noon

CONTACT: 512-393-2120 hays-tx@tamu.edu

WEBSITE: <https://hays.agrilife.org/>

HAYS COUNTY FOOD BANK ✓

LOCATION(S): 220 Herndon Street, San Marcos, Texas 78666

SERVICES and/or WHO IS ELIGIBLE: Food and resource assistance, food stamps application to low-income & homeless individuals. Free weekly groceries, SNAP sign-up assistance. Potential eligibility: Income, Household (already receiving SNAP, TANF, SSI, National School Lunch Program, or Medicaid), or Temp EMR (job less, unexpected bill).

FEES/COST OF SERVICES: N/A

HOURS: Monday to Thursday: 8:00 a.m. – 5:00 p.m., Friday: 8:00 a.m. – noon

FOOD DISTRIBUTION SITE HOURS: San Marcos: Monday: 4:00– 6:00 p.m.; Kyle: Tuesday: Noon – 12:45 p.m.; Wimberley: 1st Wednesday of month: 5:00 p.m. – 5:45 p.m.; Buda: Thursday: Noon – 12:45 p.m.

CONTACT: 512-392-8300

POINT OF CONTACT: Lisa Young, lyoung@haysfoodbank.org

WEBSITE: <https://haysfoodbank.org/get-help/>

HEAVEN'S HARVEST AT HOLLAND STREET FOOD PANTRY ✓

LOCATION(S): 205 East Holland Street, San Marcos, TX 78666

SERVICES and/or WHO IS ELIGIBLE: We provide fresh produce and vegetables, protein items in meat, beans, peanut butter, and bread items as we receive them. Anyone can receive assistance.

FEES/COST OF SERVICES: N/A

HOURS: Sundays from 4:30p to 5:30p

CONTACT: 512-749-1097

WEBSITE: www.hollandstreetchurchofchrist.org

SALVATION ARMY - SAN MARCOS ✓

LOCATION(S): 1346 Thorpe Ln Unit B, San Marcos, TX 78666

SERVICES and/or WHO IS ELIGIBLE: Clothes, food pantry, transportation, and utility assistance for low-income and homeless individuals & families.

FEES/COST OF SERVICES: N/A

HOURS: Tuesday to Friday: 9:00 a.m. – 4:00 p.m.

INTAKE CONTACT: Walk-in or contact Lisa Cruz 737-344-8257

POINT OF CONTACT: Lisa Cruz, lisa.cruz@uss.salvationarmy.org

WEBSITE:

<https://www.salvationarmyusa.org/usn/>

SAN MARCOS NEIGHBORHOOD ENHANCEMENT ✓

LOCATION(S): 630 E Hopkins San Marcos, TX 78666

SERVICES and/or WHO IS ELIGIBLE: FREE clothing, furniture & home items to low-income individuals.

FEES/COST OF SERVICES: N/A

HOURS: Monday to Friday: 8:00 a.m. – 5:00 p.m.

INTAKE CONTACT: Email code compliance at codecompliance@sanmarcostx.gov to inquire about warehouse donations

POINT OF CONTACT: Shanna O'Brien:

sobrien@sanmarcostx.gov and Tiffany Harris: tharris@sanmarcostx.gov

WEBSITE:

<https://www.sanmarcostx.gov/701/Neighborhood-Enhancement>

Education & Support

ANY BABY CAN

LOCATION(S): 6207 Sheridan Ave, Austin, TX 78723 and 7700 Floyd Curl Dr. San Antonio, TX 78229

SERVICES and/or WHO IS ELIGIBLE: Parent education & support, in-home/telehealth child development services & family health resources.

FEES/COST OF SERVICES: N/A

HOURS: Monday to Friday: 8:00 a.m. – 5:00 p.m.

INTAKE CONTACT: 512-454-3743, <https://anybabycan.org/request-services/>

WEBSITE: <https://anybabycan.org/contact-us/>

ARCIL

LOCATION(S): 618 S Guadalupe St # 103, San Marcos, TX 78666

SERVICES and/or WHO IS ELIGIBLE: Independent living skills, life skills, peer support for individuals with disabilities and the general public.

FEES/COST OF SERVICES: N/A

HOURS: Monday to Thursday: 7:15 a.m. – 3:45 p.m.

INTAKE CONTACT: 512-396-5790 OR 512-396-5791 <https://arcilinc.org/index.php/contact/contact-3>

POINT OF CONTACT: Maria Herrera, mherrera@arcil.com

WEBSITE: www.arcilinc.org

AUSTIN COMMUNITY COLLEGE ✓

LOCATION(S): 1200 Kohlers Crossing, Kyle, TX 78640

SERVICES and/or WHO IS ELIGIBLE: Free tuition and general fees for 3 years (or up to 5 years if wanting an ACC bachelor's) to 2024 H.S. grads and GED completers who live in the ACC service area. Associate degree, bachelor's degree, university transfer, or credit workforce certificate courses.

FEES/COST OF SERVICES:

• \$67 Resident Tuition • \$15 General Fee • \$2 Success Fee • \$1 Sustainability Fee

HOURS: Monday to Thursday: 7:00 a.m. – 10:00 p.m., Friday: 7:00 a.m. – 5:00 p.m.

CONTACT: 512-262-6500, visit the website to access applications quick links

WEBSITE: <https://sites.austincc.edu/free-tuition/>

CENTER FOR DIVERSITY AND GENDER STUDIES (TXST SOAR) ✓

LOCATION(S): 449 Trauth-Huffman Hall 601 University Dr. San Marcos, TX 78666

SERVICES and/or WHO IS ELIGIBLE: Sociology Dept Pilot program. TXST undergrads receive mentoring and conducting applied research experience.

FEES/COST OF SERVICES: Free

HOURS: Monday to Friday: 8:00 a.m. – 5:00 p.m.

CONTACT: 512-245-2113 sociology@txstate.edu

WEBSITE: <https://www.soci.txst.edu/Current-Students/sociology-soar-program.html>

CENTRO ESPERANZA COMMUNITY CENTER

LOCATION(S): 2045 Spruce St., San Marcos, TX 78666

SERVICES and/or WHO IS ELIGIBLE: Offers a wide variety of programs including nutrition assistance, adult education, diabetes management assistance, immunizations, baby and hygiene care for Hays County residents.

FEES/COST OF SERVICES: N/A

HOURS: Monday to Friday: 8:00 a.m. – noon, 1:00 p.m. – 5:00 p.m.

CONTACT: 512-353-0356

WEBSITE:

<https://www.centroesperanzasmtx.com/>

CHRYSLIS MINISTRIES

LOCATION(S): 509 San Pedro Ave, San Antonio, TX 78212

SERVICES and/or WHO IS ELIGIBLE: Case management, life skills classes and mental health counseling to judicially impacted individuals.

FEES/COST OF SERVICES: N/A

HOURS: Monday: 8:30 a.m. – 5:30 p.m., Tuesday to Thursday: 8:30 a.m. – 5:00 p.m., Friday: 8:30 a.m. – 4:30 p.m.

INTAKE CONTACT: 210-299-4540,

<https://www.chrysmin.org/contact-us-2/>

WEBSITE: <https://www.chrysmin.org/>

DRIPPING SPRINGS ISD

LOCATION(S): 300 Sportsplex Dr. Dripping Springs, TX 78620

SERVICES and/or WHO IS ELIGIBLE: Any school-aged student residing with district boundaries for counseling, support and community services.

FEES/COST OF SERVICES: N/A

HOURS: varies by level

CONTACT: 512-858-3000,

dsisdcommunications@dsisdtx.us

WEBSITE: <https://www.dsisdtx.us/>

HAYS CISD

LOCATION(S): 21003 Interstate 35 Kyle, TX 78640-4745

SERVICES and/or WHO IS ELIGIBLE: Any school-aged student residing with district boundaries for counseling, support and community services.

FEES/COST OF SERVICES: N/A

HOURS: N/A

CONTACT: 512-268-2141

WEBSITE: <https://www.hayscisd.net/Page/1>

SALVATION ARMY - SAN MARCOS

LOCATION(S): 1346 Thorpe Ln Unit B, San Marcos, TX 78666

SERVICES and/or WHO IS ELIGIBLE: Clothes, food pantry, transportation, and utility assistance for low-income and homeless individuals & families.

FEES/COST OF SERVICES: N/A

HOURS: Tuesday to Friday: 9:00 a.m. – 4:00 p.m.

INTAKE CONTACT: Walk-in or contact Lisa Cruz 737-344-8257

POINT OF CONTACT: Lisa Cruz,

lisa.cruz@uss.salvationarmy.org

WEBSITE:

<https://www.salvationarmyusa.org/usn/>

SAN MARCOS CISD

LOCATION(S): 631 Mill Street San Marcos, TX 78666

SERVICES and/or WHO IS ELIGIBLE: Any school-aged student residing with district boundaries for counseling, support and community services.

FEES/COST OF SERVICES: N/A

HOURS: N/A

CONTACT: 512-757-8999

WEBSITE: <https://www.smcisd.net/>

SAN MARCOS PUBLIC LIBRARY ✓

LOCATION(S): 625 E. Hopkins San Marcos, TX 78666

SERVICES and/or WHO IS ELIGIBLE: providing our citizens with access to an outstanding collection of library materials; entertaining and educational programs for all ages; fast, free computer, Internet, and information services; and comfortable facilities in which to read, relax, and connect with others. We strive to provide truly outstanding customer service and to promote reading and learning as vital, enjoyable, lifelong activities.

FEES/COST OF SERVICES: No cost.

HOURS: Monday to Thursday: 9:00 a.m. – 9:00 p.m., Friday: 9:00 a.m. – 6:00 p.m., Saturday: 10:00 a.m. – 6:00 p.m., Sunday: 1:00 p.m. – 6:00 p.m.

CONTACT: 512-393-8200 or 512-393-8215

WEBSITE:

<https://www.sanmarcostx.gov/3879/Library>

UNIVERSAL SERVICE ADMINISTRATIVE COMPANY

LOCATION(S):

SERVICES and/or WHO IS ELIGIBLE: Federal program that lowers monthly cost of phone and internet. Eligible consumers can get up to \$9.25 off the cost of phone, internet, or bundled services.

FEES/COST OF SERVICES: Varies. Must qualify by phone or online

HOURS: Sunday to Monday: 9:00 a.m. – 9:00 p.m. (EST)

CONTACT: 800-234-9473, online form:

https://getinternet.gov/apply?id=nv_home&ln=RW5nbGlzaA%3D%3D

WEBSITE: <https://www.lifelinesupport.org/>

WIMBERLEY ISD

LOCATION(S): 951 FM 2325 Wimberley, TX 78676

SERVICES and/or WHO IS ELIGIBLE: PK-12 student residing in-district or approved transfer for school-based counseling and support services.

FEES/COST OF SERVICES: N/A

HOURS: Monday to Friday: 8:00 a.m. – 4:30 p.m.

CONTACT: 512-847-2414

POINT OF CONTACT: Sarah Myers, Sarah.Myers@wimberley.isd.net, 512-847-5729 ext. 4262

WEBSITE:

<https://www.wimberleyisd.net/domain/766>

YOUTH ADVOCATE PROGRAMS

LOCATION(S): 8101 Cameron Rd. Ste. 109 Austin, TX 78754 or 7901 Cameron Rd. Bldg 2, Ste 300

SERVICES and/or WHO IS ELIGIBLE: Medical management, skills training & development services, counseling, case management for youth, teens, and young adults.

FEES/COST OF SERVICES: Only accepts insurance.

HOURS: Monday to Friday: 8:00 a.m. – 5:00 p.m.

INTAKE CONTACT: 512-394-7249,

txbhreferrals@yapinc.org or

admin392@yapinc.org

POINT OF CONTACT: Erika Bitar EBitar@yapinc.org

WEBSITE: <https://www.yapinc.org/>

Veterans Services

AMERICAN GI FORUM (NATIONAL VETERANS OUTREACH) ✓

LOCATION(S): 2700 S I-35 Frontage Rd R.#100 Austin, TX 78704 and 611 N Flores St, San Antonio, TX 78205

SERVICES and/or WHO IS ELIGIBLE: Offers a range of vital services to veterans o thrive in civilian life from employment assistance to housing solutions and mental health counseling

FEES/COST OF SERVICES: Free

HOURS: Monday to Thursday: 8:30 a.m. – 5:30 p.m., Friday: 8:30 a.m. – 4:30 p.m.

CONTACT: AUSTIN: 512-363-5978 SAN ANTONIO: 210-354-4892

WEBSITE: <https://agif-nvop.org/>

HAYS COUNTY VETERANS SERVICES OFFICE ✓

LOCATION(S): 111 E. San Antonio St., Ste. 200, San Marcos, TX 78666

SERVICES and/or WHO IS ELIGIBLE: Assists veterans with benefits and helps determine which programs they may qualify for and assist with the application process

FEES/COST OF SERVICES: Free

HOURS: Monday to Friday: 8:00 a.m. – 5:00 p.m.

CONTACT: 512-392-8387, veteranservices@co.hays.tx.us

POINT OF CONTACT: Jude Prather, jude.prather@co.hays.tx.us

WEBSITE:

<https://www.hayscountytexas.com/veterans-services>

KYLE VFW 12058

LOCATION(S): 107 Veterans Dr. Kyle, TX 78640

SERVICES and/or WHO IS ELIGIBLE: Association to foster camaraderie. The hall serves as a center for events and gatherings. Veteran outreach program offered.

FEES/COST OF SERVICES: Annual dues of \$39, Student Vet's Annual dues will be \$20

HOURS: Varies

CONTACT: 512-686-8501

WEBSITE:

<https://vfw12058.org/di/vfw/v2/default.asp?nid=1>

MEALS FOR VETS ✓

LOCATION(S):

SERVICES and/or WHO IS ELIGIBLE: Helps veterans with few or no financial resources and do not qualify for other food programs (such as meals on wheels).

FEES/COST OF SERVICES: Free

HOURS: Monday to Friday: 8:00 a.m. – 5:00 p.m.

CONTACT: 800-676-1389 or 830-992-3375

INTAKE FORM:

<https://form.jotform.com/232634057188056>

WEBSITE: <https://mealsforvets.org/>

PATRIOTS' HALL

LOCATION(S): 231 Patriots Hall Blvd. Dripping Springs, TX 78620

SERVICES and/or WHO IS ELIGIBLE: Welcoming Veterans of all ages and military service to explore therapeutic workshops, art classes, weekend campouts, education and employment seminars, family gatherings, VA Claims Assistance, and Wellness Center.

FEES/COST OF SERVICES: N/A

HOURS: Tuesday to Thursday: 2:00 p.m. – 8:00 p.m., Saturday: 10:00 a.m. – 6:00 p.m.

CONTACT: admin@patriotshall.org

WEBSITE: <https://patriotshall.org/>

TEXAS VETERANS COMMISSION - VETERANS MENTAL HEALTH DEPARTMENT ✓

LOCATION(S): 1801 Congress Ave. Suite 14s, Austin, TX 78701

SERVICES and/or WHO IS ELIGIBLE: Assists with ensuring access to competent mental health services for service members, veterans, and their families.

FEES/COST OF SERVICES: Free

HOURS: Monday to Friday: 8:00 a.m. – 5:00 p.m.

CONTACT: 512-463-6091, VMHD@tvc.texas.gov

POINT OF CONTACT: Dr. Blake Harris, Blake.Harris@tvc.texas.gov, 512-676-1895

WEBSITE:

<https://www.hayscountytexas.com/veterans-services>

VETERANS AFFAIRS - Austin VA Clinic

LOCATION(S): 7901 Metropolis Dr. Austin, TX 78744

SERVICES and/or WHO IS ELIGIBLE: Outpatient multi-specialty clinic that consists of patient advocacy, homelessness, home health services, legal services, transportation, community living, suicide prevention, and more for veterans.

FEES/COST OF SERVICES: N/A

HOURS: Monday to Friday: 8:00 a.m. – 4:30 p.m.

CONTACT: 512-823-4000

WEBSITE: <https://www.va.gov/central-texas-health-care/locations/austin-va-clinic/>

VETERANS AFFAIRS- HOUSING FOR DISABLED VETS

LOCATION(S):

SERVICES and/or WHO IS ELIGIBLE: Housing grants for Veterans and service members with certain service-connected disabilities so they can buy or change a home to meet their needs and live more independently. Vets must own or will own a home, and they must have a qualifying service-connected disability.

FEES/COST OF SERVICES: N/A

HOURS: Varies

CONTACT: 512-665-1244, how to apply:

<https://www.va.gov/housing-assistance/disability-housing-grants/how-to-apply/>

WEBSITE: <https://www.va.gov/housing-assistance/disability-housing-grants/>

VETERANS RESOURCES - SAN MARCOS PUBLIC LIBRARY

LOCATION(S): Hays

SERVICES and/or WHO IS ELIGIBLE: List of resources provided for veterans on SM Public Library's website

FEES/COST OF SERVICES: N/A

HOURS: N/A

CONTACT: 512-665-1244, how to apply: <https://sanmarcostx.gov/3741/Veteran-Resources>

WEBSITE:

<https://sanmarcostx.gov/3741/Veteran-Resources>

VETERANS SERVICES PROGRAM (Texas Workforce Commission) ✓

LOCATION(S): 101 E 15th Sr. Austin, TX 78778

SERVICES and/or WHO IS ELIGIBLE: Helps veterans with jobs, training and other support. Veterans receive priority service at Workforce Solutions offices and assists them with transitioning to civilian life.

FEES/COST OF SERVICES: Free

HOURS: Monday to Friday: 8:00 a.m. – 5:00 p.m.

CONTACT: 512-466-7867

POINT OF CONTACT: Bobby Gear, bobby.gearjr@twc.texas.gov or tvlp@twc.texas.gov

WEBSITE:

<https://www.twc.texas.gov/programs/veterans>

VFW HALL SAN MARCOS

LOCATION(S): 1701 Hunter Rd. San Marcos, TX 78666

SERVICES and/or WHO IS ELIGIBLE: Honorably discharged veterans association to foster camaraderie. The hall serves as a center for events and gatherings

FEES/COST OF SERVICES: Annual dues of \$45

HOURS: Varies

CONTACT: 512-665-1244, vfwpost3413@gmail.com

WEBSITE:

<https://mauricetsuttlespost3413.godaddysites.com/>

Personal Information Assistance

DOWNTOWN AUSTIN COMMUNITY COURT

LOCATION(S): 505 Barton Springs Rd, Austin, TX 78704

SERVICES and/or WHO IS ELIGIBLE: ID recovery, City ID cards w/photo & D.O.B printed, mailing address and phone access, clothing, snacks to homeless individuals. Community resources to temp/transitional housing, and mental health/substance use treatment.

FEES/COST OF SERVICES: N/A

HOURS: Monday to Friday: 8:00 a.m. – 5:00 p.m.

INTAKE CONTACT: 512-974-4879, Walk-in – first come first serve

POINT OF CONTACT: Jennifer Sowinski:
jennifer.sowinski@austintexas.gov

WEBSITE:

<https://www.austintexas.gov/department/community-court>

SAN MARCOS PUBLIC LIBRARY - ENHANCED LIBRARY CARDS

LOCATION(S): 625 E. Hopkins San Marcos, TX 78666

SERVICES and/or WHO IS ELIGIBLE: For 18 year old Hays County residents. SM Public Library provides an enhanced ID which may possibly be used as a supplement with other documents to prove residents identity. Enhanced cards are issued on a first-come, first-served basis. If day/time does not work, please email smpl@sanmarcostx.gov with name, date of birth, and availability to schedule an appt.

FEES/COST OF SERVICES: N/A

HOURS: Wednesday: 2:00 p.m. – 4:00 p.m.

WEBSITE:

<https://sanmarcostx.gov/596/Library-Cards>

Transportation

CARTS ✓

LOCATION(S): Hays County

SERVICES and/or WHO IS ELIGIBLE: Public bus & Country bus (San Marcos to Kyle/ Dripping Springs/Wimberley), Intercity bus (San Marcos to Austin/Lockhart/Bastrop). Paratransit bus for those w/physical or mental health disabilities.

FEES/COST OF SERVICES: FREE

HOURS: Monday to Friday: 8:00 a.m. – 5:00 p.m.

INTAKE CONTACT: 512-478-7433,

Ride request: [Request a Ride](#)

Pickup: [Ready for Pick-up](#)

POINT OF CONTACT: Donna Aaron,
donna@ridecarts.com

WEBSITE: <https://www.ridecarts.com/schedule>

KYLE \$3.14 UBER

LOCATION(S): Kyle

SERVICES and/or WHO IS ELIGIBLE: Discounted Uber program for Kyle residents needing transportation. Download City of Kyle app & Uber app and follow website's directions

FEES/COST OF SERVICES: N/A for joining program. Various costs depending on

HOURS: Monday to Friday: 8 a.m. – 5 p.m.

INTAKE CONTACT: 512-262-10105,
communicationsdepartment@cityofkyle.com;
support, 737-877-2738
UberKyle314@cityofkyle.com

WEBSITE:

<https://www.cityofkyle.com/communications/uber-kyle-314>

Legal Assistance

AUSTIN TENANTS COUNCIL ✓

LOCATION(S): 625 E. Hopkins St.

SERVICES and/or WHO IS ELIGIBLE: Partnership with the City of San Marcos to provide counseling, mediation services to settle conflicts, eviction protection and other assistance to Hays and Travis County residents.

FEES/COST OF SERVICES: Free

HOURS: varies

INTAKE CONTACT: 512-474-1961, online intake:
www.trla.org/atc

WEBSITE: <https://www.housing-rights.org/>

DISABILITY RIGHTS TEXAS

LOCATION(S): 2222 W Braker Ln, Austin, TX 78758 and offices throughout Texas

SERVICES and/or WHO IS ELIGIBLE: Legal assistance and referrals for individuals with intellectual or developmental disabilities and mental health.

FEES/COST OF SERVICES: N/A

HOURS: Monday to Friday: 8:00 a.m. – 5:00 p.m.

INTAKE CONTACT: 800-252-9108

<https://intake.drtx.org/Default.aspx>

WEBSITE:

<https://disabilityrightstx.org/en/getting-help/how-to-apply-for-services/>

INDIGENT DEFENSE COORDINATOR ✓

LOCATION(S): 712 S. Stagecoach Trail, Suite 2024, San Marcos, TX 78666

SERVICES and/or WHO IS ELIGIBLE: Defense services for low-income families in civil cases, application required

FEES/COST OF SERVICES: Free

HOURS: Monday to Friday: 9:00 a.m. – 5:00 p.m.

INTAKE CONTACT: 512-878-6740,

IDC@co.hays.tx.us

WEBSITE: <https://hayscountytexas.com/indigent-defense/>

MANO AMIGA ✓

LOCATION(S): 174 S. Guadalupe St. Ste. 107, San Marcos, TX 78666

SERVICES and/or WHO IS ELIGIBLE: Anyone impacted by criminalization. Provide people with legal tools to advocate for themselves, including parole packets, good guy packets, and assistance with complaint filing against legal system

FEES/COST OF SERVICES: Free

HOURS: 24/7

CONTACT: 512-766-6854,

Elle@manoamigasm.org

WEBSITE: Manoamigasm.org

NDS TEXAS (NEIGHBORHOOD DEFENDER SERVICE) ✓

LOCATION(S): 1340 Wonder World Dr. STE 108 Building 1E San Marcos, TX 78666

SERVICES and/or WHO IS ELIGIBLE: International organization known for its innovative, community-based, holistic public defense practice.

FEES/COST OF SERVICES:

HOURS:

CONTACT: 210-952-9259

WEBSITE:

TEXAS LEGAL SERVICE CENTER ✓

LOCATION(S): 1920 E. Riverside Dr. Suite A-120, #501, Austin, TX 78741

SERVICES and/or WHO IS ELIGIBLE: Services assist income-eligible Texans access healthcare, safety, stability, housing, government benefits, and employment.

FEES/COST OF SERVICES: Free

HOURS: Monday to Friday: 9:00 a.m. - 5:00 p.m.

INTAKE CONTACT: 512- 477-6000

WEBSITE: <https://www.tlsc.org/>

TEXAS RIO GRANDE LEGAL AID ✓

LOCATION(S): Hays County

SERVICES and/or WHO IS ELIGIBLE: Free civil legal services. TRLA has other special programs that serve specific client populations such as Legal Aid for Survivors of Sexual Assault.

FEES/COST OF SERVICES: Free.

HOURS: Monday to Friday: 9:00 a.m. - 5:00 p.m.

CONTACT: 956-996-8752

WEBSITE: <http://www.trla.org/>

TRANS LIFELINE - NAME CHANGE MICROGRANTS

LOCATION(S): N/A

SERVICES and/or WHO IS ELIGIBLE: Name Change Microgrants cover all the required fees pertaining to court-ordered name changes. They cover corrections and updates on passports, driver's licenses, state IDs, birth certificates, and Tribal IDs.

FEES/COST OF SERVICES: N/A

HOURS: applications accepted from the 1st - 14th of each month.

CONTACT: through the website

WEBSITE: <https://translifeline.org/microgrants/name-change-microgrants/>

General Resources

HAYS COUNTY PET RESOURCE CENTER ✓

LOCATION(S): Hays County

SERVICES and/or WHO IS ELIGIBLE: Provides resources and services to pet owners experiencing challenges keeping their pet(s) to help keep them out of the shelter system.

FEES/COST OF SERVICES: Free.

HOURS: N/A

CONTACT: haysinfo@austinpetsalive.org

WEBSITE: <https://www.hayscountytexas.gov/pet-resource>

UNFORGETTABLE FAMILIES AND FRIENDS, INC. ✓

LOCATION(S): Kyle, TX 78640

SERVICES and/or WHO IS ELIGIBLE: Helping the community through various projects such as toy drives, school supplies, bikes for books, and more. See website for current projects. Accepting donations.

FEES/COST OF SERVICES: Free.

HOURS: N/A

CONTACT: unforgettablelives@gmail.com

WEBSITE: unforgettablelives.org

LGBTQIA+ Resources

SAN MARCOS QUEER COUNCIL

LOCATION(S): San Marcos, TX 78666

SERVICES and/or WHO IS ELIGIBLE: Grassroots community group facilitating affirming, inclusive, and educational events and spaces for the queer community and allies.

FEES/COST OF SERVICES: N/A

HOURS: N/A

CONTACT: SanMarcosQueerCouncil@gmail.com

WEBSITE:

<https://www.facebook.com/SMTXQCI/>

SENIOR SERVICES



BUDA STAR (SENIORS TAKING A RIDE) ✓

LOCATION(S): Offers rides to Buda, Kyle, and San Marcos.

SERVICES and/or WHO IS ELIGIBLE: This program is free for seniors, and we offer rides to various locations in Buda, Kyle, and San Marcos (service area). Riders may make reservations 30-days in advance or at least a minimum of two (2)-business days' notice. Service is from the rider's curbside to their destination (curb-to-curb).

FEES/COST OF SERVICES: Free

HOURS: Monday to Friday: 8:00 a.m. - 4:00 p.m.

CONTACT: 512-523-1014

WEBSITE: <https://www.budatx.gov/497/STAR-Senior-Transportation-Service>

CAPITAL AREA COUNCIL OF GOVERNMENTS (CAPCOG) ✓

LOCATION(S): 6800 Burleson Road Building 310, Suite 165 Austin, TX 78744

SERVICES and/or WHO IS ELIGIBLE: Serves older 55+ residing in Bastrop, Caldwell, Hays and Williamson County. Serves people with disabilities and their caregivers with a variety of services and supports including nutrition, chronic disease management, benefits counseling, care coordination, advocacy for nursing facility, and assisted living residents throughout the region.

FEES/COST OF SERVICES: Free

HOURS: Monday to Friday: 8:00 a.m. - 5:00 p.m.

CONTACT: 512-916-6000

WEBSITE:

<https://www.capcog.org/divisions/area-agency-on-aging/>

KYLE AREA SENIOR ZONE

LOCATION(S): 101 S. Burleson St. Kyle TX, 78640

SERVICES and/or WHO IS ELIGIBLE: Offers a variety of social, educational, health and recreational activities to the senior residents of Kyle and surrounding areas.

FEES/COST OF SERVICES: \$15 annual membership. Membership applications accepted Tuesdays 9:00AM-12:30PM Excluding holidays.

HOURS: Hours vary

CONTACT: 737-738-5279, kasz78640@gmail.com

WEBSITE: <https://kasz.org/>

SAN MARCOS ACTIVITY CENTER ✓

LOCATION(S): 501 E. Hopkins St. San Marcos, TX 78666

SERVICES and/or WHO IS ELIGIBLE: The activity center offers a Senior Membership for individuals aged 60 and above and provides older adult programs promote a healthy, active lifestyle by providing quality informational, educational, physical and social enrichment opportunities.

FEES/COST OF SERVICES: Free

HOURS: Monday to Friday: 8:00 a.m. - 5:00 p.m.

CONTACT: Senior Program Coordinator, Nick Rialli nrialli@sanmarcostx.gov, 512-393-8275 or the main line: 512-393-8400

WEBSITE:

<https://sanmarcostx.gov/1034/Active-Older-Adult-Programs>

SAN MARCOS SENIOR CITIZEN CENTER ✓

LOCATION(S): 810 Arizona St. San Marcos, TX 78666

SERVICES and/or WHO IS ELIGIBLE: The Senior Citizens facility in San Marcos provides senior citizens with opportunities to pursue mutual interests and participate in recreational activities that enhance quality of life, support independence and encourage continued involvement in and with the community. Services include field trips, arts and crafts activities, health screenings, a low-impact aerobic exercise program, information and referral to other social services agencies, and assistance in completing government forms and applications.

FEES/COST OF SERVICES: Free

HOURS: Monday to Friday: 8:00 a.m. - 2:00 p.m.

CONTACT: 512-392-2427, April De Leon

Huggard ahuggard@communityaction.com

WEBSITE:

<https://www.communityaction.com/hayscountyseiniocitizenscenter>

WIMBERLEY ON WHEELS ✓

LOCATION(S): Wimberley residents and locations only

SERVICES and/or WHO IS ELIGIBLE: Wimberley on Wheels offers complimentary door-to-door service for people 55 years of age and older living in the Wimberley Valley. This convenient service provides transportation to appointments, grocery shopping and community events four days a week. WOW provides transportation within Wimberley.

FEES/COST OF SERVICES: Free

HOURS: Monday to Thursday: 9:00 a.m. - 4:00 p.m.

CONTACT: 512-847-1781

WEBSITE:

<https://www.wimberleyonwheels.com/>

WIMBERLEY SENIOR CITIZEN CENTER ✓

LOCATION(S): 14068 Ranch Road 12 Wimberley, TX 78676

SERVICES and/or WHO IS ELIGIBLE: At the Wimberley Senior Center we offer a variety of fun and educational programs for Wimberley Valley residents ages 55 and up. Here you will meet a friendly and inclusive group of seniors who will see that you feel welcome and included.

FEES/COST OF SERVICES: Health classes and activities range from free to 5\$. Information on website.

HOURS: Monday to Friday: 9 a.m. - 5 p.m.

CONTACT: 512-847-1781

WEBSITE:

<https://www.wimberleyseniors.com/>

Assisted Living

BROOKDALE SAN MARCOS (NORTH & SOUTH)

LOCATION(S): 1720 Old Ranch Road 12 San Marcos, TX 78666 and 1401 Wonder World Drive San Marcos, TX 78666

SERVICES and/or WHO IS ELIGIBLE: The North location provides assisted living and memory care and the South location provides assisted living. Both locations offers a variety of amenities including personal assistance, wellness activities, dining services and an emergency call system.

FEES/COST OF SERVICES: Varies depending on selected residential floor plan and plan of care needed

HOURS: 24/7

CONTACT: North: 737-387-4200, South: 737-335-0882

WEBSITE: <https://www.brookdale.com/en.html>

NEW HAVEN ASSISTED LIVING

LOCATION(S): 107 Creekside Trail Kyle, TX 78640

SERVICES and/or WHO IS ELIGIBLE: Provides assisted living, memory, and respite care for seniors. Offers a variety of amenities including personal assistance, wellness activities, dining services and an emergency call system.

FEES/COST OF SERVICES: Includes a one-time community fee of \$1500 at the start of a resident's stay to cover costs related to admission and suite preparation. Monthly rate varies

HOURS: 24/7

CONTACT: 512-201-2868

WEBSITE: <https://newhaventexas.com/>

ORCHARD PARK OF KYLE

LOCATION(S): 4701 Ratcliff Dr. Kyle, TX 78640

SERVICES and/or WHO IS ELIGIBLE: Provides assisted living and memory care for seniors. Offers a variety of amenities including personal assistance, wellness activities, dining, laundry, an emergency call system.

FEES/COST OF SERVICES: Assisted Living ranges from \$3900 to \$5800 per month and additional levels of care as needed varies \$450 to \$1550 per month. Memory Care ranges from \$4950 to \$5700 per month and additional levels of care as needed varies \$250 to \$500 per month

HOURS: 24/7

CONTACT: 512-920-6400

WEBSITE: <https://www.orchardparkofkyle.com/>

PROVIDENT BUDA

LOCATION(S): 645 FM 967 Buda, TX 78610

SERVICES and/or WHO IS ELIGIBLE: Provides assisted living, memory, and respite care for seniors. Offers a variety of amenities including personal assistance, wellness activities, dining, and an emergency call system.

FEES/COST OF SERVICES: Prices vary based on care type and floor plan.

OFFICE HOURS: Monday-Friday 9:00 a.m.-5:00 p.m.

CONTACT: 512-361-5499

WEBSITE:

<https://providentbuda.wpenginepowered.com/>

SAGE SPRING ASSISTED LIVING

LOCATION(S): 802 Leah Ave. San Marcos, TX 78666

SERVICES and/or WHO IS ELIGIBLE: Provides assisted living and memory care. Offers a variety of amenities including personal assistance, wellness activities, dining, and an emergency call system for seniors.

FEES/COST OF SERVICES: Prices vary based on care type and floor plan.

HOURS: 24/7

CONTACT: 512-270-8668

WEBSITE:

<https://www.sagespringbyvolante.com/>

TAPESTRY SAN MARCOS

LOCATION(S): 125 W. McCarty Lane San Marcos, TX 78666

SERVICES and/or WHO IS ELIGIBLE: Provides assisted living, memory care, physical therapy, and physician coverage for seniors.

FEES/COST OF SERVICES: Contact for pricing.

HOURS: Monday to Friday: 8:30 a.m. - 5:00 p.m.

CONTACT: 512-667-6775

WEBSITE: <https://tapestrysanmarcos.com/>

THE BLAKE AT NEW BRAUNFELS

LOCATION(S): 220 Creekside Crossing New Braunfels, TX 78130

SERVICES and/or WHO IS ELIGIBLE: Provides assisted living, memory care, and in-house therapies (physical, occupational & speech). Offers a variety of amenities including personal assistance, wellness activities, dining, and an emergency call system for seniors.

FEES/COST OF SERVICES: Prices vary based on care type and floor plan.

HOURS: 24/7

CONTACT: 830-623-2105,

info.newbraunfels@blakeliving.com

WEBSITE:

<https://blakeliving.com/communities/new-braunfels/>

Home Health

BE HEALTHY AT HOME

LOCATION(S): 825 Main St # 110, Buda, TX 78610

SERVICES and/or WHO IS ELIGIBLE: Provides in-home skilled nursing, physical, speech and occupational therapy, CNA services for ADL's and personal assistance, and social services for financial and community resources support for seniors.

FEES/COST OF SERVICES: Contact for pricing

HOURS: Monday to Friday: 8:30 a.m. – 5:00 p.m.

CONTACT: 512-295-7000 and 512-212-0067 for the 24/7 emergency service

WEBSITE: <https://behealthyathome.com/>

CARING SENIOR SERVICES NEW BRAUNFELS

LOCATION(S): 785 Loop 337, New Braunfels, TX 78130

SERVICES and/or WHO IS ELIGIBLE: Provides in-home personal, respite, and companion care, veterans assistance with navigating benefits, and specialty care (Alzheimer's, stroke rehabilitation, post surgery recovery, COPD, fall-risk, and pneumonia programs) for seniors.

FEES/COST OF SERVICES: No sign-up fee, no application fee, no contract. charges a flat hourly rate regardless of required services.

OFFICE HOURS: Monday to Friday 8:00 a.m.- 5:00 p.m.

CONTACT: 830-327-0259

WEBSITE: [CARING NEW BRAUNFELS](https://www.caringnewbraunfels.com/)

ENHABIT HOME HEALTH SAN MARCOS

LOCATION(S): 120 Riverwalk Drive Suite 100 San Marcos TX 78666

SERVICES and/or WHO IS ELIGIBLE: The San Marcos location provides in-home personal assistance, skilled nursing, balance and fall prevention, post-operative care, medication management, occupational, speech, and physical therapy.

HOURS: Monday to Friday: 8:00 a.m.- 5:00 p.m.

CONTACT: 512-392-5801

WEBSITE: <https://www.ehab.com/>

Home Health & Hospice Care

COMFORT KEEPERS NEW BRAUNFELS

LOCATION(S): 1619 E. Common St, Suite 203 New Braunfels, TX 78130

SERVICES and/or WHO IS ELIGIBLE: Provides in-home personal assistance, companionship, and specialty care (Alzheimer's and Dementia, respite and hospice) for seniors.

FEES/COST OF SERVICES: Contact for pricing

HOURS: Monday to Friday: 8:30 a.m. – 5:00 p.m.

CONTACT: 512-598-9099

WEBSITE:

<https://www.comfortkeepers.com/offices/texas/san-marcos/>

HALCYON HOME HEALTH AND HOSPICE

LOCATION(S): 125 W. McCarty Lane San Marcos, TX 78666

SERVICES and/or WHO IS ELIGIBLE: Provides in-home care, home health, hospice, and palliative care for seniors.

FEES/COST OF SERVICES: Contact for pricing. Home care: private pay or through long term care insurance plans. Home health: private pay or insurance (Medicare, Tri-East & BSW insurance covers 100%). Hospice: Medicare and Medicaid at 100%

HOURS: Monday to Friday: 8:30 a.m. – 5:00 p.m.

CONTACT: 512-815-9009

WEBSITE: <https://halcyonhome.com/>

HOME INSTEAD

LOCATION(S): 421 S. Seguin Ave New Braunfels, TX 78130

SERVICES and/or WHO IS ELIGIBLE: Provides in-home care, Alzheimer's & Dementia care, arthritis and diabetes care, respite, and hospice care for seniors.

FEES/COST OF SERVICES: Contact for pricing.

Home care: private pay or through long term care insurance plans. Home health: private pay or insurance (Medicare, Tri-East & BSW insurance covers 100%). Hospice: Medicare and Medicaid at 100%.

HOURS: 24/7

CONTACT: 830-624-8380

WEBSITE: <https://www.homeinstead.com/>

Hospice Care

CHRISTUS SANTA ROSA HOSPICE

LOCATION(S): 1301 Wonder World Dr. San Marcos, TX 78666

SERVICES and/or WHO IS ELIGIBLE: Individualized care plan is developed for each patient and will identify the medical equipment, treatments and medication necessary to provide high quality comfort care. Services include nursing, personal care, home health aides, massage therapy, physician visits, chaplain, bereavement and respite care.

FEES/COST OF SERVICES: Contact for more information

HOURS: 24/7

CONTACT: 512-754-6159

WEBSITE:

<https://www.christushealth.org/locations/san-marcos-hospice>

GENTIVA HOSPICE

LOCATION(S): 1911 Corporate Dr. Ste 104 San Marcos, TX 78666

SERVICES and/or WHO IS ELIGIBLE: Services include hospice care, pain and symptom management, emotional support, respite, spiritual, and bereavement care for seniors.

FEES/COST OF SERVICES: Contact for more information

HOURS: 24/7

CONTACT: 512-392-9138

WEBSITE: <https://www.gentivahs.com/>

HOPE HOSPICE

LOCATION(S): 611 N Walnut Ave. New Braunfels, TX 78130

SERVICES and/or WHO IS ELIGIBLE: Services include hospice care, nursing, personal care, home health aides, therapy (occupational, speech and physical), physician visits, social services, counseling, and respite care.

FEES/COST OF SERVICES: Contact for more information

HOURS: 24/7

CONTACT: 830-625-7525

WEBSITE: <https://www.hopehospice.net/>

Medical Services

ADVANCED IMAGING

LOCATION(S): 1330 Wonder World Dr. Bldg. D, Ste. 202 San Marcos, TX 78666

SERVICES and/or WHO IS ELIGIBLE: Services include ultrasound, X-Ray, MRI/MRA, and CAT Scan.

FEES/COST OF SERVICES: Accepts a wide variety of health insurance carriers.

HOURS: Monday to Friday: 8:00 a.m. – 5:00 p.m.

CONTACT: 512-353-5535

WEBSITE:

<https://www.advancedimagingsanmarcos.com/>

ASCENSION SETON KYLE, BUDA & SAN MARCOS

LOCATION(S): Kyle: 6001 Kyle Pkwy, Kyle, TX 78640, Buda: 5235 Overpass Rd, Buda, TX 78610 San Marcos: 2108 Hunter Rd #116, San Marcos, TX 78666

SERVICES and/or WHO IS ELIGIBLE: Health screenings for illness and injuries, Kyle location has full-service hospital

FEES/COST OF SERVICES: Accepts insurance

HOURS: Buda and SM: Monday to Friday: 8:00 a.m. – 5:00 p.m., Kyle: 24/7

CONTACT: Kyle: 512-504-5000, Buda: 512-504-0888, San Marcos: 737-213-1590

WEBSITE: <https://healthcare.ascension.org/>

AUSTIN HEART SAN MARCOS

LOCATION(S): 1251 Sadler East Dr. Bldg. J Ste. 2100 San Marcos, TX 78666

SERVICES and/or WHO IS ELIGIBLE: Specializes in treating cardiovascular diseases and provides interventional cardiology services.

FEES/COST OF SERVICES: Accepts many insurance carriers.

HOURS: Monday to Friday: 8:00 a.m. – 5:00 p.m.

CONTACT: 512-396-5603

WEBSITE: <https://austinheart.com/>

BAYLOR SCOTT & WHITE CLINIC, REHAB AND MEDICAL CENTER

LOCATION(S): CLINIC: 4036 Cromwell Dr. Kyle, TX 78640. **REHABS:** 5695 Kyle Pkwy Ste 140, Kyle, TX 78640, and 2041 S. I35 Ste. 205, San Marcos, TX 78666, 640 Old San Antonio Rd. Buda, TX 78610. **MEDICAL CENTER:** 5330 Overpass Rd, Buda, TX 78610

SERVICES and/or WHO IS ELIGIBLE: Clinic includes pediatric, OBGYN, preventative health, and general medicine. Rehabilitation includes comprehensive outpatient physical therapy, occupational therapy and certified hand therapy. Medical Center includes a full-service hospital, multi-specialty clinic, lab, imaging, and surgical services.

FEES/COST OF SERVICES: Accepts many insurance carriers.

HOURS: 24/7

CONTACT: 737-999-6200

WEBSITE: <https://www.bswhealth.com/>

CARENOW URGENT CARE SAN MARCOS

LOCATION(S): 155 Wonder World Dr. San Marcos, TX 78666 and 301 N Guadalupe St, San Marcos, TX 78666

SERVICES and/or WHO IS ELIGIBLE: Treat minor medical conditions and lacerations, offers on-site X-ray services, and provides physical exams, and immunizations.

FEES/COST OF SERVICES: Self pay and accepts most insurance.

HOURS: Monday to Sunday: 8:00 a.m. – 8:00 p.m.

CONTACT: Wonder World: 512-738-8334

Guadalupe: 512-960-2545

WEBSITE: [CARENOW San Marcos](https://www.carenow.com/)

COMMUNITY ACTION

LOCATION(S): 215 S. Reimer Avenue, Ste. 130 San Marcos, TX 78666

SERVICES and/or WHO IS ELIGIBLE: Programs provide access to health care services for low-income and men and women including: family planning, HIV/AIDS assistance, breast & cervical cancer outreach, and prescription assistance for maintenance prescriptions by utilizing the free prescription programs to meet the needs of uninsured Hays County residents.

FEES/COST OF SERVICES: Reduced cost and free depending on income

HOURS: Monday to Friday: 8:00 a.m. – 12:00 p.m. and 1:00 p.m. – 5:00 p.m.

CONTACT: 512-392-1161

WEBSITE: <https://www.communityaction.com/>

HAYS NURSING AND REHABILITATION

LOCATION(S): 1900 Medical Pkwy, San Marcos, TX 78666

SERVICES and/or WHO IS ELIGIBLE: Offers tailored short-term and long-term skilled nursing care, physical therapy, speech therapy, and wound care services

FEES/COST OF SERVICES: Contact for more information

HOURS: 24/7

CONTACT: 512-396-1888

WEBSITE: <https://haysnursing.com/>

HOWERTON EYE CLINIC

LOCATION(S): 4282 Farm to Market 1626 Suite 200 Kyle, TX 78640

SERVICES and/or WHO IS ELIGIBLE: Provides a wide range of services to improve vision including routine eye exam, treatment for glaucoma or diabetic eye disease, LASIK, implantable contact lenses, or cataracts surgery, in addition to treating many other eye conditions.

FEES/COST OF SERVICES: Offers financing through Care Credit and accepts most insurance carriers

HOURS: Monday to Friday: 8:00 a.m. – 5:00 p.m.

CONTACT: 512-872-6064

WEBSITE: <https://www.howertoneye.com/>

PAM HEALTH SPECIALTY AND REHABILITATION HOSPITAL

LOCATION(S): 1445 Hanz Dr. New Braunfels, TX 78130 and 5980 Kyle Parkway Kyle, TX 78640

SERVICES and/or WHO IS ELIGIBLE: New Braunfels services include long-term acute care and inpatient rehabilitation. Provides specialty services including neurological disorders, orthopedic conditions, post-op care and pain management, advanced nursing and diagnostic services. Kyle services include rehabilitation, wound care, brain injury, prosthetic training, neurologic conditions, Parkinson's Disease, and cardiopulmonary conditions

FEES/COST OF SERVICES: Contact for more information

HOURS: 24/7

CONTACT: New Braunfels: 830-627-7600, Kyle: 512-262-0821

WEBSITE: <https://pamhealth.com/>

SAN MARCOS REHABILITATION & HEALTHCARE

LOCATION(S): 1600 N Interstate 35 Frontage Rd. San Marcos, TX 78666

SERVICES and/or WHO IS ELIGIBLE: Services include short-term rehabilitation and long-term care consisting of in-house therapy, skilled nursing and socials to help seniors stay active.

FEES/COST OF SERVICES: Contact for more information

HOURS: 24/7

CONTACT: 512-353-5026

WEBSITE: <https://sanmarcoscare.com/>

CHILD WELFARE RESOURCES



Wellbeing & Health Services

CASA OF CENTRAL TEXAS ✓

LOCATION(S): 111 E San Antonio St #2, San Marcos, TX 78666

SERVICES and/or WHO IS ELIGIBLE: CASA provides court appointed advocates to determine the emotional, physical, and educational needs of abused or neglected children and makes recommendations for placements until cases resolve permanently.

FEES/COST OF SERVICES: Free

HOURS: Monday to Friday: 8:00 a.m. - 5:00 p.m.

CONTACT: San Marcos: 512-392-3578,

info@casacentex.org

ABUSE HOTLINE : 1-800-252-2400,

ABUSE ONLINE REPORT:

<https://www.txabusehotline.org/Login/Default.aspx>

WEBSITE: <https://www.casacentex.org/>

CENTRO ESPERANZA ✓

LOCATION(S): 2045 Spruce St., San Marcos, TX 78666

SERVICES and/or WHO IS ELIGIBLE: Benefits assistance, baby pantry, hygiene closet, Commodity Supplemental Food Program, utility assistance, free summer youth program.

FEES/COST OF SERVICES: free or low-cost, some programs have certain requirements that can be found on website.

HOURS: Monday to Friday: 8:00 a.m. - 5:00 p.m. (closed from 12-1pm for lunch)

CONTACT: 512-353-0356

WEBSITE:

<https://www.centroesperanzasmtx.com/>

GREATER SAN MARCOS YOUTH COUNCIL ✓

LOCATION(S): San Marcos

SERVICES and/or WHO IS ELIGIBLE: Residential children's shelter for children 2-17. counseling services, parent education classes, youth and family advocacy, delinquency intervention, and truancy intervention.

FEES/COST OF SERVICES: Free

HOURS: Counseling services available Monday to Friday by appointment.

CONTACT: 512-754-0550

WEBSITE: <https://www.gsmc.org/>

HAYS COUNTY CHILD PROTECTIVE BOARD ✓

LOCATION(S): 401-C Broadway St. San Marcos, TX 78666

SERVICES and/or WHO IS ELIGIBLE: Board meets to consider the emergency needs of children who are in the care of Child Protective Services (CPS) because of abuse and neglect. Offers a Rainbow Room, a 24/7 resource center to CPS caseworkers to gather essential items for children and families in their care.

FEES/COST OF SERVICES: Free

HOURS: Monday to Friday 8:00am - 5:00 pm

CONTACT: 512-210-8032, board@hccpbtx.org

WEBSITE: <https://www.hccpbtx.org/about-us>

HAYS COUNTY HEALTH DEPARTMENT- CHILD VACCINES \$

LOCATION(S): 101 Thermon Dr. San Marcos, TX 78666

SERVICES and/or WHO IS ELIGIBLE: Provides low-cost vaccines to eligible children from birth to 18 to those who are eligible (see criteria on website).

FEES/COST OF SERVICES: Eligible clients will not be turned away based on their inability to pay administration fee.

HOURS: Monday, Tuesday, Thursday: 8:00 a.m. - 12 p.m./1:00 p.m. - 4:00 p.m., Wednesday 8:00 a.m. - 10:00 a.m./1:00 p.m. - 4:00 p.m., Friday: 8:00 a.m. - 12:00 p.m.

CONTACT: 512-393-7779

WEBSITE:

<https://www.hayscountytexas.com/vaccinations>

ROXANNE'S HOUSE ✓

LOCATION(S): San Marcos

SERVICES and/or WHO IS ELIGIBLE: Non-residential child-friendly facility where abused children come to heal

FEES/COST OF SERVICES: Free

HOURS: 24/7

CONTACT: 512-396-3404

WEBSITE: <https://www.hcwc.org/get-help/child-advocacy-2/>

WIC ✓

LOCATION(S): Offered in Kyle, Lockhart, New Braunfels, Seguin, and San Marcos

SERVICES and/or WHO IS ELIGIBLE: Nutrition program and classes for pregnant, breastfeeding women and families with children under 5 and are eligible.

FEES/COST OF SERVICES: No cost if application is accepted.

HOURS: Clinic hours will vary by location

CONTACT: 800-942-3678

WEBSITE: <https://texaswic.org/>

WORKFORCE SOLUTIONS RURAL CAPITAL AREA (CHILD CARE SERVICES)

LOCATION(S): 4794 Transportation Way Building 5, Suite 500 San Marcos, TX 78666

SERVICES and/or WHO IS ELIGIBLE: Parents working or going to school locate and assist in paying childcare expenses. Each adult in the household must be working and/or in school/training or a combination of these an average of 25 hours a week over a review period or actively looking for employment.

FEES/COST OF SERVICES: Must have income evaluated to meet guidelines

HOURS: Monday to Friday 8:00 a.m. – 5:00 p.m.

CONTACT: 512-392-1291

WEBSITE:

<https://workforcesolutionsrca.com/locations/hays>

COMMUNITIES IN SCHOOLS CENTRAL TEXAS ✓

LOCATION(S): 3000 S. IH 35 Ste 300 Austin TX 78704

SERVICES and/or WHO IS ELIGIBLE: CIS works with parents, educators, community-based organizations, and schools to help students overcome obstacles and succeed in learning.

FEES/COST OF SERVICES: No Cost.

HOURS: N/A

CONTACT: 512-462-1771, info@cisnet.org

WEBSITE: www.ciscentraltexas.org

Daycare

BEST BUDS ✓

LOCATION(S): Wimberley

SERVICES and/or WHO IS ELIGIBLE: Wimberley Best Buds is a mentor program for all Wimberley kids. They have been serving the community since 2016 by providing volunteer mentors to meet with individual children on the WISD campuses for 30 minutes each week.

FEES/COST OF SERVICES: N/A

HOURS: N/A

CONTACT: wimberleybestbuds@gmail.com

WEBSITE:

<https://www.wimberleyumc.org/outreach>

BLANCO VISTA EARLY LEARNING CENTER (EXTEND-A-CARE YMCA)

LOCATION(S): 2951 Blanco Vista Blvd., San Marcos, TX 78666

SERVICES and/or WHO IS ELIGIBLE: Serves children, six weeks through school-age and provides them with an educational environment filled with structured activities, exploration, and fun

FEES/COST OF SERVICES: Non-refundable annual registration fee of \$200 per child. Infants (6 weeks–23 months): \$1,345, 2 yr old: \$1,245, Ages 3 & 4: \$1,145 *Fee assistance may be available

HOURS: Monday to Friday: 6:45 a.m. – 5:30 p.m.

CONTACT: 512-236-9622

WEBSITE:

<https://www.austinyymca.org/childcare/infant-preschool/>

B-Z SUNSHINE TOTS

LOCATION(S): 713 Picasso Dr. San Marcos, TX 78666

SERVICES and/or WHO IS ELIGIBLE: Home-based day care 18 months–14 years old. Provides education, social, cultural, emotional, physical and recreational areas.

FEES/COST OF SERVICES: Tuition varies based on age of child and care coverage

HOURS: Monday to Friday: 7:30 a.m. – 5:30 p.m.

CONTACT: 512-395-5983

WEBSITE:

FIRST STEP

LOCATION(S): 4003 Hunter Rd San Marcos, TX 78666

SERVICES and/or WHO IS ELIGIBLE: Provides a learning environment for children from birth to age 12. The overall goal of the program is enhancement of the child's social, emotional, language, and cognitive development.

FEES/COST OF SERVICES: \$150 annual registration. Tuition varies based on child's age and duration of care needed. CCS subsidy with Texas Workforce accepted.

HOURS: Monday to Friday: 7:00 a.m. to 6:00 p.m.

CONTACT: 512-353-4177

WEBSITE:

<https://www.firststepschooltx.com/about>

FIRST UNITED METHODIST CHURCH - DAYCARE & AFTERSCHOOL

LOCATION(S): 129 W Hutchison St, San Marcos, TX 78666

SERVICES and/or WHO IS ELIGIBLE: Provides opportunities for spiritual, social, and academic growth as we learn through play and literacy while enjoying music and movement classes, learning centers, story time, creative art, recreation, and chapel for children ages 3 mths–pre-K.

FEES/COST OF SERVICES: Tuition varies based on age of child and care coverage

HOURS: Monday to Friday: 7:30 a.m. – 6:00 p.m.

CONTACT: 512-396-3236

WEBSITE: <https://www.fumcsm.org/>

GIGGLE AND GROW

LOCATION(S): 610 Main Street Buda, Texas 78610 and 2411 Hunter Road San Marcos, Texas 78666

SERVICES and/or WHO IS ELIGIBLE: Provides lessons involving physical, social-emotional, language, health and wellness, cognitive development, elements of ASL (American Sign Language), Spanish, and cultural diversity.

FEES/COST OF SERVICES: Tuition varies based on child's age. Reg fee: \$135, supply fee: \$150 (prorated based on enrollment date)

HOURS: Monday to Friday: 7:00 a.m. – 5:30 p.m.

CONTACT: Buda: 512-392-5437 and San Marcos: 512-392-3150

WEBSITE: <https://giggleandgroweducare.com/>

HEAD START COMMUNITY ACTION PROGRAM ✓

LOCATION(S): Multiple locations offered in Hays <https://www.communityaction.com/headstart/sites>

SERVICES and/or WHO IS ELIGIBLE: safe and caring place for children to learn and grow. Early Head Start: Ages 0-36 months old and pregnant women. Head Start: pre-school age (3-4 yrs)

FEES/COST OF SERVICES: Free if family qualifies. Federal poverty guidelines are used to evaluate family income.

HOURS: Monday to Friday: 8:00 a.m. – 5:00 p.m.

CONTACT: Danielle Engelke, dengelke@communityaction.com, 512- 396-3395 Ext. 328

WEBSITE:

<https://www.communityaction.com/headstart>

KIDS OF THE KINGDOM

LOCATION(S): 130 W. Holland St. San Marcos, TX 78666

SERVICES and/or WHO IS ELIGIBLE: Fun, loving and educational early childhood center that encompasses a Christian environment for serving children 6 weeks through 5 years old.

FEES/COST OF SERVICES: Varies based on age of child

HOURS: Monday to Friday 7:00 a.m. – 6:00 p.m.

CONTACT: 512-353-5437

WEBSITE: <https://kidsofthekingdomcdc.org/>

KIDDIE ACADEMY

LOCATION(S): 2448 Main St. Buda, TX 78610

SERVICES and/or WHO IS ELIGIBLE: Education and childcare services curriculum for ages 6 weeks – 6 yrs. Nutritious lunch and snacks provided.

FEES/COST OF SERVICES: Tuition is based on child's age, programs, days and hours the child attends

HOURS: Monday to Friday: 6:30 a.m. – 6:30 p.m.

CONTACT: 737-400-6715

WEBSITE:

<https://kiddieacademy.com/academies/buda/>

LITTLE LAMBS LEARNING CENTER

LOCATION(S): 415 Riverside Dr. San Marcos, TX 78666

SERVICES and/or WHO IS ELIGIBLE: Child care services for infants, toddlers, and pre-k.

FEES/COST OF SERVICES:

HOURS: Monday: 8:45 a.m. – 6:00 p.m., Thursday: 7:00 a.m. – 6:00 p.m., Friday: 8:45 a.m. – 6:00 p.m.

CONTACT: 512-392-4662

WEBSITE: <https://www.facebook.com/p/Little-Lambs-Learning-Center-100063479203409/>

PRESBYTERIAN PARENT COOPERATIVE PRESCHOOL

LOCATION(S): 323 Mary St San Marcos, Texas 78666

SERVICES and/or WHO IS ELIGIBLE: Preschool with child-led, play-based curriculum. STEAM learning, Spanish Language enrichment, Music, Chapel, and Multi-cultural presentations included.

FEES/COST OF SERVICES: \$150 annual registration fee (early reg \$125). Materials Fee: \$150 –

(payable as \$75 per semester). Monthly Tuition: \$450 *need-based financial assistance by application when funds are available*

HOURS: Monday to Thursday: 8:30 a.m. – 1:30 p.m.

CONTACT: 512-353-8325

WEBSITE: <https://ppcpkids.org/>

WONDERLAND SCHOOL

LOCATION(S): 302 Country Estates Drive, San Marcos, Texas 78666

SERVICES and/or WHO IS ELIGIBLE: Serves children, six weeks- kindergarten age. Offers as a curriculum enriched in various academic subjects.

FEES/COST OF SERVICES: \$165 registration fee. Offers monthly tuition based on age of child. \$5/hr afterschool fee

HOURS: Monday to Friday: 7:00 a.m. – 6:00 p.m.

CONTACT: 512-392-9404,

wonderland1965@hotmail.com

WEBSITE: <https://thewonderlandschool.com/>

EDUCATIONAL RESOURCES



Trainings & Presentations

NAMI Central Texas ✓

LOCATION(S): 4110 Guadalupe Street Austin BLDG 781, TX 78703

SERVICES and/or WHO IS ELIGIBLE: Offers various presentations on mental health topics for different ages, settings, and populations

FEES/COST OF SERVICES: Free

HOURS: Monday to Friday: 9:00 a.m. – 5:00 p.m.

WEBSITE: <https://namicentraltx.org/>

N.I.C.E. (Narcan In Case of Emergency) Project ATX ✓

LOCATION(S): 4430 Menchaca, 1010 E. Cesar Chavez, 1413 Webberville, 620 W. 29th Austin, TX

SERVICES and/or WHO IS ELIGIBLE: Offers trainings on how to administer Narcan, and explains its uses and recommended dosages to prevent fentanyl or heroin overdose

FEES/COST OF SERVICES: Free

HOURS: Friday: 6:30 p.m. – 8:30 p.m.

WEBSITE:

<https://www.instagram.com/niceprojectatx/>

Educational Resources

PFLAG SAN MARCOS ✓

LOCATION(S): San Marcos, TX

SERVICES and/or WHO IS ELIGIBLE: Offers support, education, and advocacy for LGBTQ+ people and allies

FEES/COST OF SERVICES: Free

CONTACT: pflagsanmarcos@gmail.com, 205-246-1800, ki4ggk@gmail.com

WEBSITE: <https://pflag.org/chapter/san-marcos/>

TEXAS A&M AGRILIFE ✓

LOCATION(S): 200 Stillwater Rd, Suite 102 Wimberley, TX 78676 (Hays location)

SERVICES and/or WHO IS ELIGIBLE: Research-based information and sustainable solutions created to improve the well-being of the land, people, and animals across the state of Texas

FEES/COST OF SERVICES: Free and fee-based workshops/educational content offered

CONTACT: 512-393-2120

WEBSITE: <https://hays.agrilife.org/>

WILLIAMS CAREER SCHOOL OF EXCELLENCE ✓

LOCATION(S): 300 CM Allen Parkway Suite 212B San Marcos, TX 78666

SERVICES and/or WHO IS ELIGIBLE: Help students graduate debt free from our program by offering affordable tuition and flexible payment plans. Programs available include: HVAC, CNA, Phlebotomy, Medication Aide, and Medical Assistant.

FEES/COST OF SERVICES: Varies by program, payment plans available.

HOURS: N/A

CONTACT: info@mywcse.com, 512-618-5433

WEBSITE: <https://mywcse.com/>

PARTNERS RESOURCE NETWORK ✓

LOCATION(S): Virtual across Texas

SERVICES and/or WHO IS ELIGIBLE: Partners Resource Network (PRN) is a non-profit agency that operates the Texas statewide network of Parent Training and Information (PTI) Centers serving parents of children and youth with disabilities ages of 0-26 as well as youth self-advocates ages 14-26.

FEES/COST OF SERVICES: Free.

HOURS: Monday to Friday: 8:30 a.m. – 5:00 p.m.

CONTACT: info@prntexas.org, 806-762-1434

WEBSITE: <https://prntexas.org/>

Apps

EMOODS

eMoods is a mood tracking and charting journal perfect for logging Bipolar I, Bipolar II, Depression, Anxiety, or any general kind of mood tracking! eMoods allows you to track medication changes so that you can safely make adjustments, titrations or medication tapers with the help of your doctor and learn about what works and what doesn't. These insights can be used for titrating up to a new medication or for assistance in coming off a medication.

<https://apps.apple.com/us/app/emoods-bipolar-mood-tracker/id1184456130>

https://play.google.com/store/apps/details?id=my.tracker&hl=en_US&gl=US

HAYS COUNTY TX SHERIFFS OFFICE

The Hays County Sheriff App allows residents to connect with the Hays County Sheriff's Office by reporting crimes, submitting tips, and other interactive features, as well as providing the community the latest public safety news and information.

<https://apps.apple.com/us/app/hays-county-tx-sheriffs-office/id1515778209>

https://play.google.com/store/apps/details?id=com.ocv.hayscountysheriff&hl=en_US

MEDISAFE

Medisafe takes the stress out of managing complex prescriptions. The app sends personalized reminders for medications and will also give warnings of negative drug interactions if you have multiple prescriptions.

https://get.medisafe.com/download/?_branch_match_id=1304145427947514842&_branch_referrer=H4sIAAAAAAAAAA8soKSkottLXz01NySxOTEvVSywo0MvJzMvWd68ltggwqMqwCAAA0CHmOiQAAAA%3D

MEETING GUIDE

Meeting Guide is a free of charge app that provides meeting information from Alcoholics Anonymous service entities in an easy-to-access format.

<https://apps.apple.com/us/app/meeting-guide/id1042822181>
https://play.google.com/store/apps/details?id=org.meetingguide&hl=en_US

YOUUPER

Youper guides you through interactive CBT Therapy exercises to help you calm anxiety, improve your mood, and build stronger relationships with your friends, family, and loved ones.

<https://apps.apple.com/us/app/youper-cbt-therapy-chatbot/id1060691513>
https://play.google.com/store/apps/details?id=br.com.youper&hl=en_US&gl=US

YOUR TEXAS BENEFITS

App for Texans who have applied for or get: SNAP food benefits, TANF cash help, and health care benefits (including Medicare Savings Program and Medicaid). Manage and view your cases anytime you want!

<https://apps.apple.com/us/app/your-texas-benefits/id931986739>
<https://play.google.com/store/apps/details?id=us.tx.state.hhsc.ytbmobile&hl=en>



Hays County Health Department Behavioral Health Program

Contact our Behavioral Health Coordinator to:

- Submit questions and comments
- Submit your agency to directory
- Request further assistance

Peyton Wagner

Peyton.Wagner@co.hays.tx.us
512-393-7779

Prepared by:



Peyton Wagner

Hays County Health Department
Behavioral Health Coordinator



Christel Childs

Hays County Countywide Operations
Grant Coordinator



Emily McCabe

Hays County Health Department
Community Outreach Specialist