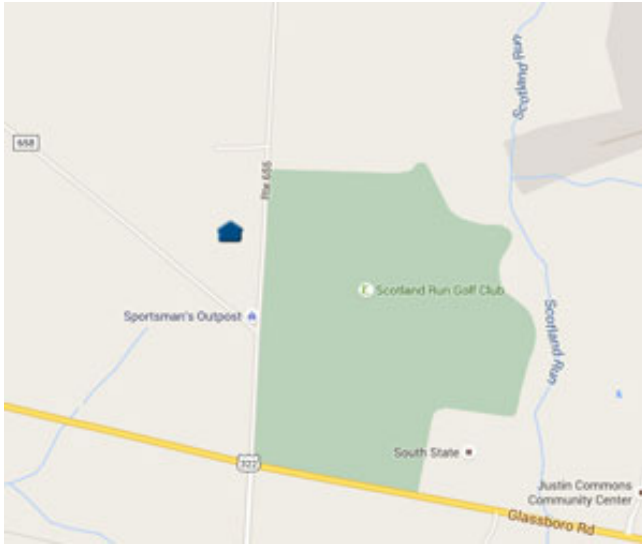




Stirling Glen
Joan "Joni" Weirich
856-235-6912
www.HOVHomes.com/stirlingglen

Directions



The Sales Center for Stirling Glen is open 10-5 daily. For navigation systems or online directions, use: 8 Kippen Drive, Williamstown, NJ 08094.



Stirling Glen
Joan" Joni" Weirich
856-235-6912
www.HOVHomes.com/stirlingglen

Features

Every One of these Exceptional Features is Included

LUXURY APPOINTMENTS

- Dramatic 9 foot first floor ceilings
- Designer style insulated front door with security hardware, side lights and front door chime
- Custom insulated carriage style garage doors
- Walk-in closets in Master Bedroom
- Gas Heating and Cooking
- Convenient laundry room with washer and gas dryer hook-ups
- Easy care vinyl flooring in foyer, kitchen, hall bath and laundry rooms, in a choice of decorator colors and styles
- Custom millwork details include 3" baseboard and 21/4" door trim and one piece crown molding in foyer
- Arched embossed two panel, smooth finish, interior doors with lever handles
- Decorator quality lighting fixtures
- Deluxe wall-to-wall carpeting in dining room, great room / family room, study and bedrooms in choice of decorator colors
- Ventilated vinyl shelving in all closets
- Professionally managed association with lawn care & snow removal (consult sales manager for details)

THOUGHTFULLY DESIGNED

KITCHENS & BATHS

- Furniture quality 36" overhead cabinets, with crown molding and seating island
- Laminate kitchen countertop in choice of colors with stainless steel single bowl sink and single lever faucet
- Generous Pantry and Eat-In Kitchen
- Self-cleaning free standing oven/range, dishwasher, microwave/hood with hood vented to the outside and food waste disposal
- Luxurious master bath with ceramic floors, one piece 5' fiberglass shower with corner seats, convenient 35" high double bowl vanity with dressing top and private linen closet
- One piece fiberglass tub in hall bath with vanity and private linen closet
- Cultured marble bath countertops, w/single-lever faucets, anti-scald shower diverters and vented exhaust fan

QUALITY CONSTRUCTION

- Low maintenance vinyl siding using professionally coordinated Premium color schemes
- Distinctive "Architectural" roof shingles with 30-year warranty and ice dam protection
- Fully sodded home site with professionally coordinated landscaping
- Lawn irrigation system
- Automatic garage door openers
- Direct-line PEX plumbing system
- 7/16" OSB exterior sheathing
- Engineered wood roof trusses
- Pre-wired for 1 phone and 1 cable outlet
- Concrete driveway and service walk
- 2 exterior hose bibs
- 2 exterior GFI electrical outlets
- Hard-wired smoke and CO2 detectors w/ battery back-up
- Public water and sewer
- Underground utility lines 5-year warranted termite treatment

NJ ENERGY STAR HOMES PROGRAM - ASSURING YOU OF SUPERIOR VALUE, TODAY AND INTO THE FUTURE!

- High efficiency central heating and air conditioning with automatic setback thermostat
- Energy efficient tankless water heater
- Upgraded 200 amp electrical service
- Insulated vinyl single hung tilt-in windows and sliding patio door with Low-E, argon filled glass with screens
- R-45 insulation in ceilings
- R-15 insulation in exterior walls
- Air infiltration barrier around windows, and doors
- Each home designed, inspected, tested, and certified by NJ's leading energy consultant

10 YEAR HOME BUYER WARRANTY PROGRAM.

Builder shall have the right to make substitution of comparable materials or equipment.





Stirling Glen
Joan "Joni" Weirich
856-235-6912
www.HOVHomes.com/stirlingglen

Model: **Pinehurst** | Priced From: **294,900** | Square Footage: **1,577**

Elevations - Pinehurst



Elevation A with Optional Shakes and Optional Brick

3 Bedrooms, 2 Baths, 2 Car Garage, 1st Floor Master Bedroom with 2 Walk-In Closets, Great Room, Island Kitchen with Nook, and Large Walk-In Pantry Closet



Elevation B with Optional Shakes and Optional Brick



Stirling Glen
Joan "Joni" Weirich
856-235-6912
www.HOVHomes.com/stirlingglen

Model: **Pinehurst** | Priced From: **294,900** | Square Footage: **1,577**

Elevations - Pinehurst



Elevation C with Optional
Porch, Optional Stone and
Optional Loft

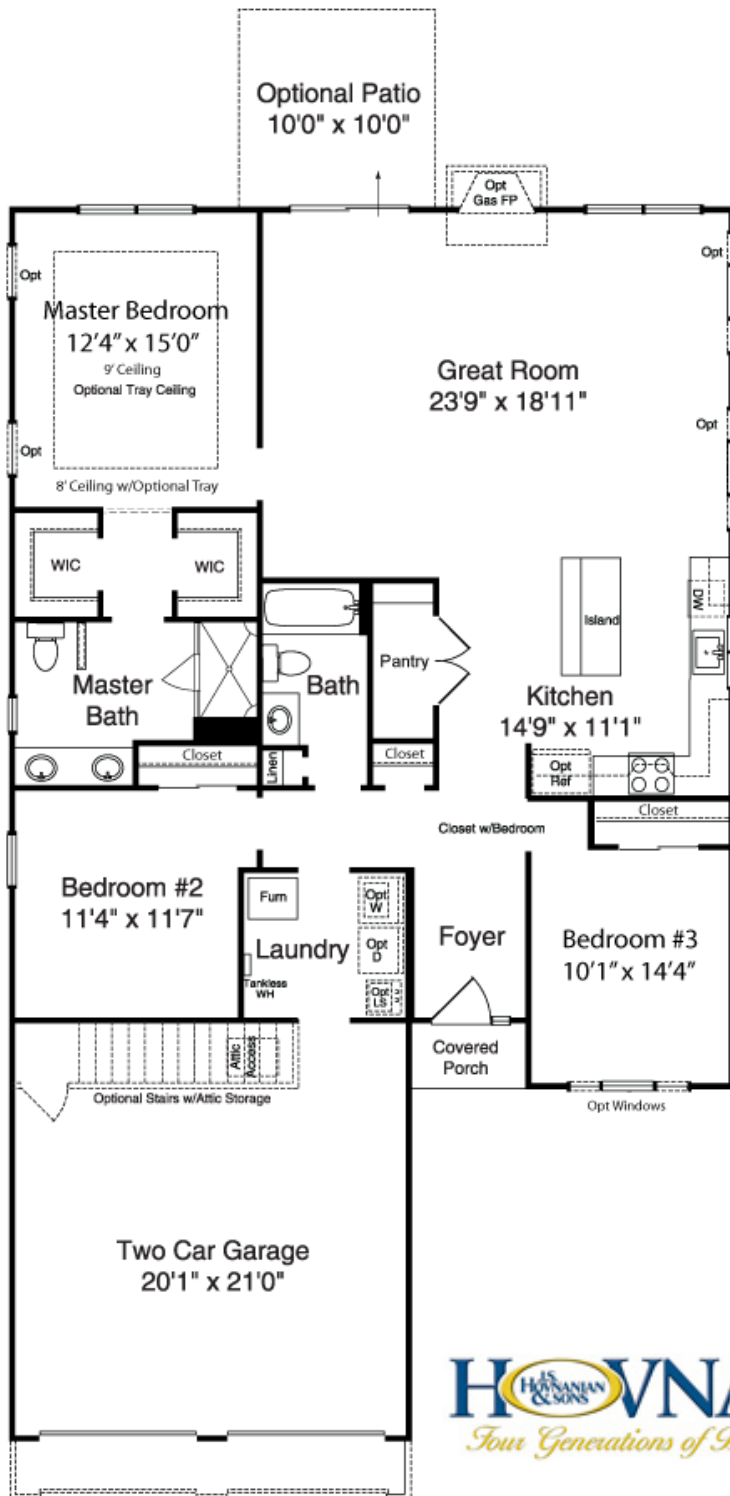


Stirling Glen
Joan"Joni" Weirich
856-235-6912
www.HOVHomes.com/stirlingglen

Model: **Pinehurst** | Priced From: **294,900** | Square Footage: **1,577**

Floor Plans - Pinehurst

1st Floor Plan



Optional 3' Extension w/Attic Storage



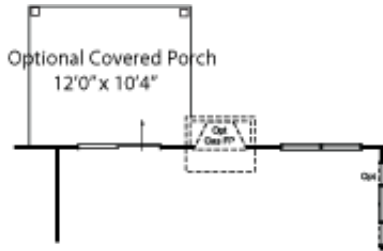


Stirling Glen
Joan"Joni" Weirich
856-235-6912
www.HOVHomes.com/stirlingglen

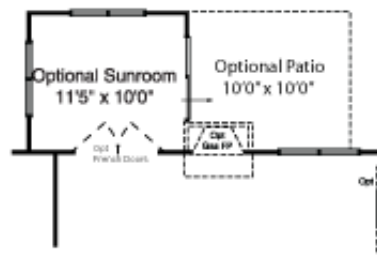
Model: **Pinehurst** | Priced From: **294,900** | Square Footage: **1,577**

Floor Plans - Pinehurst

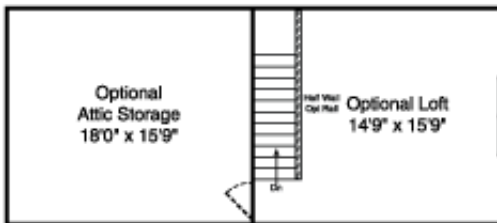
Floor Plan Options



Optional Covered Porch



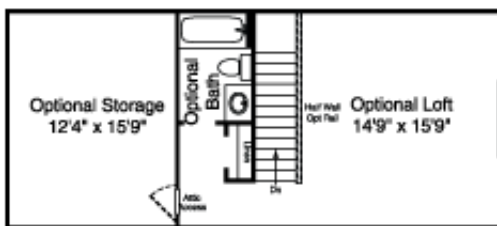
Optional Sunroom



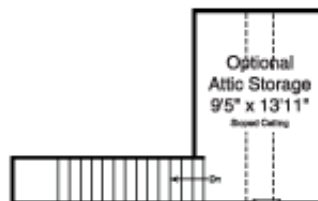
Optional Loft & Attic Storage



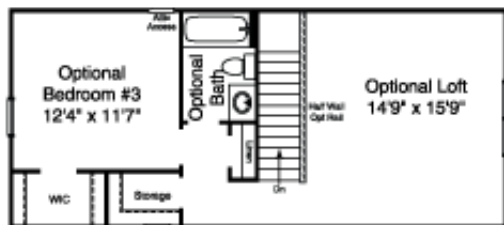
Stair w/Optional Loft Storage



Optional Attic Storage, Loft & Bath



Optional Attic Storage

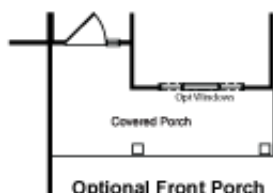


Optional Bedroom #3, Bath & Loft



Optional Kitchen Island

Optional Study



Optional Front Porch





Stirling Glen
Joan "Joni" Weirich
856-235-6912
www.HOVHomes.com/stirlingglen

Model: **Strathmore** | Priced From: **299,900** | Square Footage: **1,701**

Elevations - Strathmore



Elevation A with Optional Brick and Optional Cedar Shakes

3 Bedrooms, 2 Baths, 2 Car Garage, 1st Floor Master Bedroom with 2 Walk-In Closets, Great Room, Dining Room, Island Kitchen & Large Walk-In Pantry



Elevation B with Optional Brick, Optional Cedar Shakes, Optional Loft, Optional Porch



Stirling Glen
Joan "Joni" Weirich
856-235-6912
www.HOVHomes.com/stirlingglen

Model: **Strathmore** | Priced From: **299,900** | Square Footage: **1,701**

Elevations - Strathmore

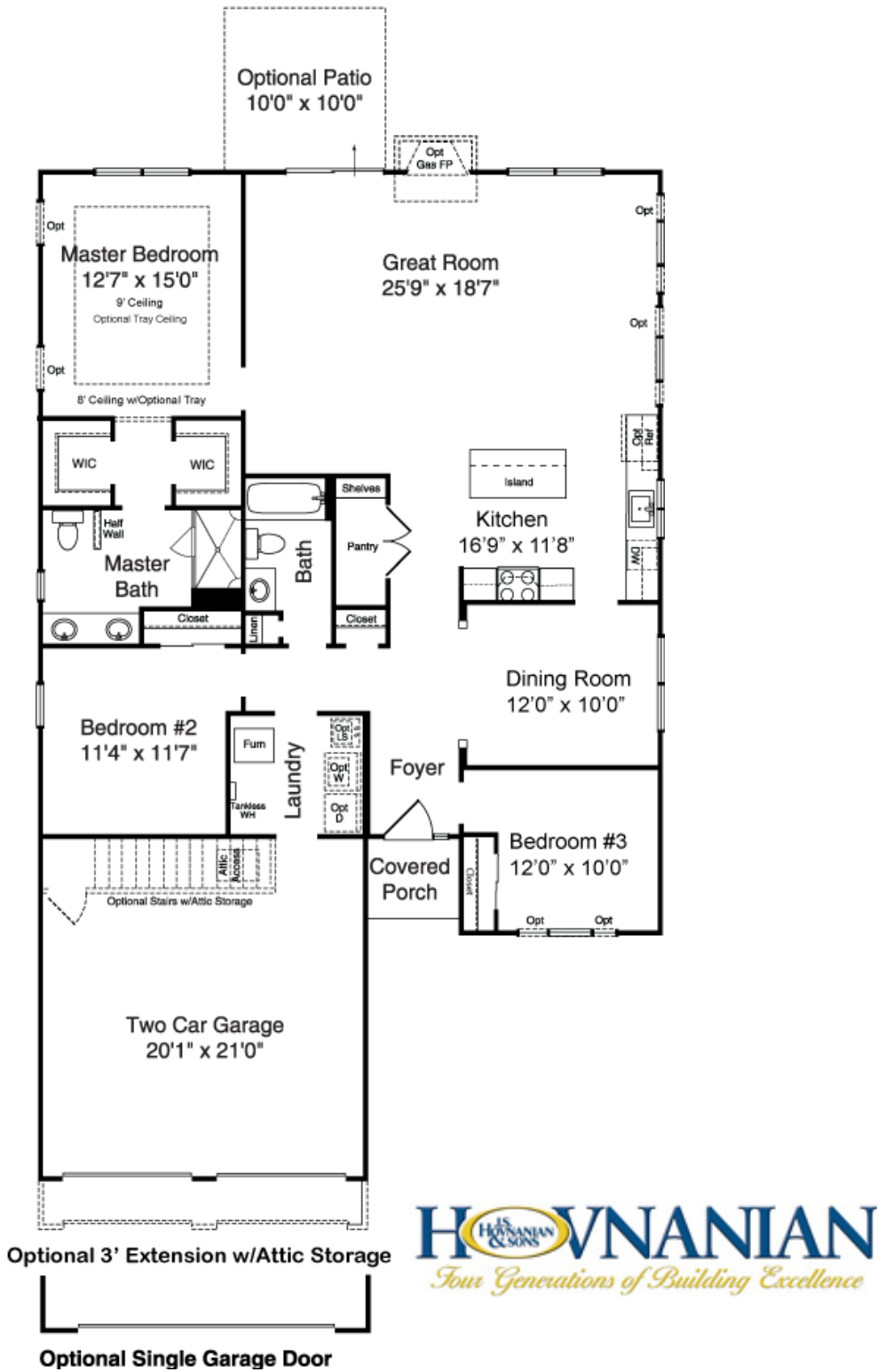


Elevation C with Optional
Stone



Floor Plans - Strathmore

1st Floor Plan



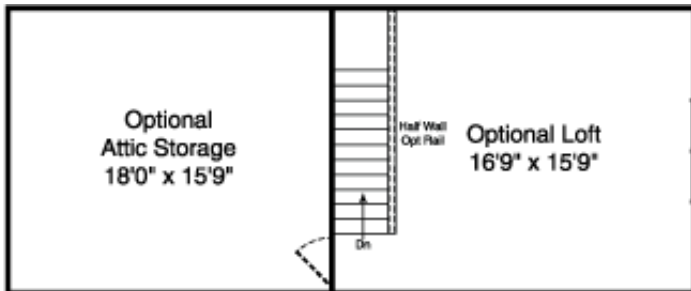


Stirling Glen
Joan "Joni" Weirich
856-235-6912
www.HOVHomes.com/stirlingglen

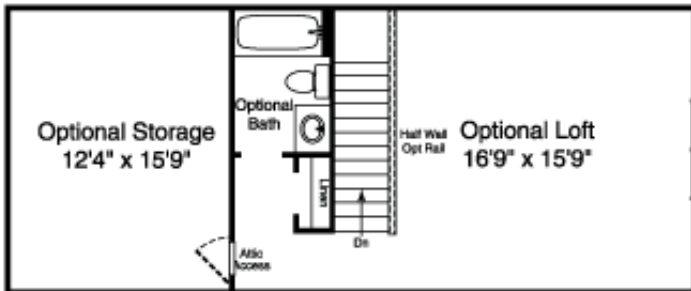
Model: **Strathmore** | Priced From: **299,900** | Square Footage: **1,701**

Floor Plans - Strathmore

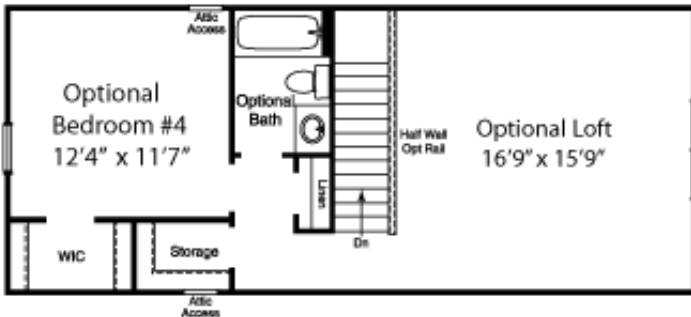
2nd Floor Plan



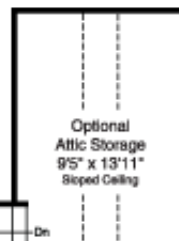
Optional Loft and Attic Storage



Optional Attic Storage, Loft & Bath



Optional Bedroom #3, Bath and Loft



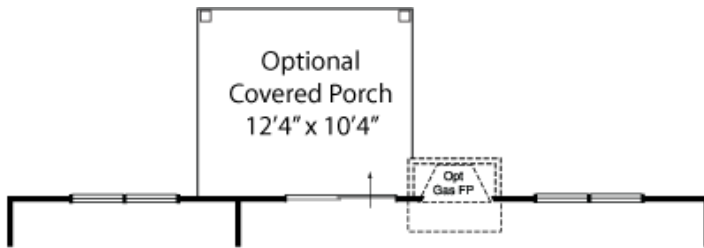


Stirling Glen
Joan"Joni" Weirich
856-235-6912
www.HOVHomes.com/stirlingglen

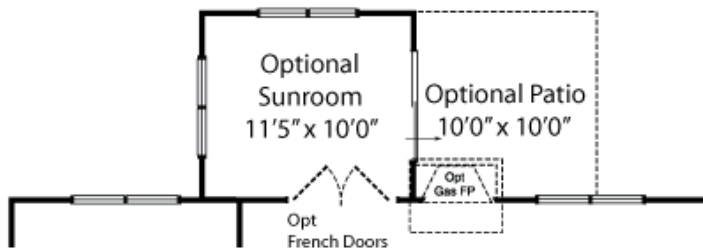
Model: **Strathmore** | Priced From: **299,900** | Square Footage: **1,701**

Floor Plans - Strathmore

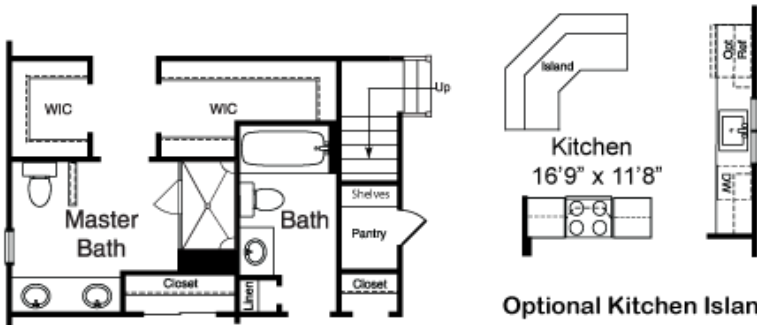
Available Floor Plan Options



Optional Covered Porch

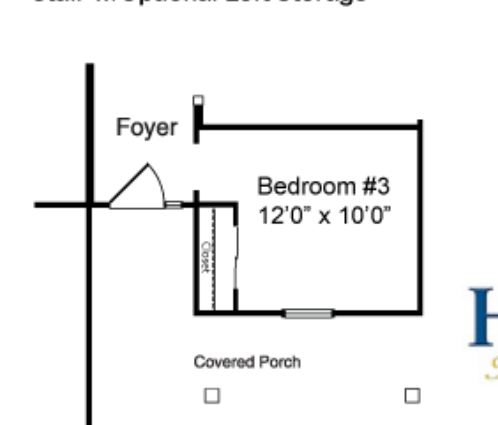


Optional Sunroom

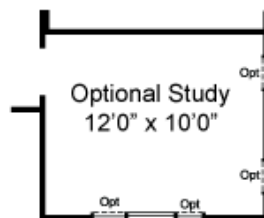


Optional Kitchen Island

Stair w/Optional Loft Storage



Optional Front Porch



Optional Study

HOVHOMES
Four Generations of Building Excellence



Stirling Glen
Joan "Joni" Weirich
856-235-6912
www.HOVHomes.com/stirlingglen

Model: **Alcott** | Priced From: **302,900** | Square Footage: **1,744**

Elevations - Alcott



Elevation A

3 Bedrooms, 2 Baths, 2 Car Garage, 1st Floor Master Bedroom with 2 Walk-In Closets, Great Room, Dining Room, Opt. Study, Island Kitchen with Nook, and Pantry Closet



Elevation B with Optional Stone



Stirling Glen
Joan "Joni" Weirich
856-235-6912
www.HOVHomes.com/stirlingglen

Model: **Alcott** | Priced From: **302,900** | Square Footage: **1,744**

Elevations - Alcott



Elevation C

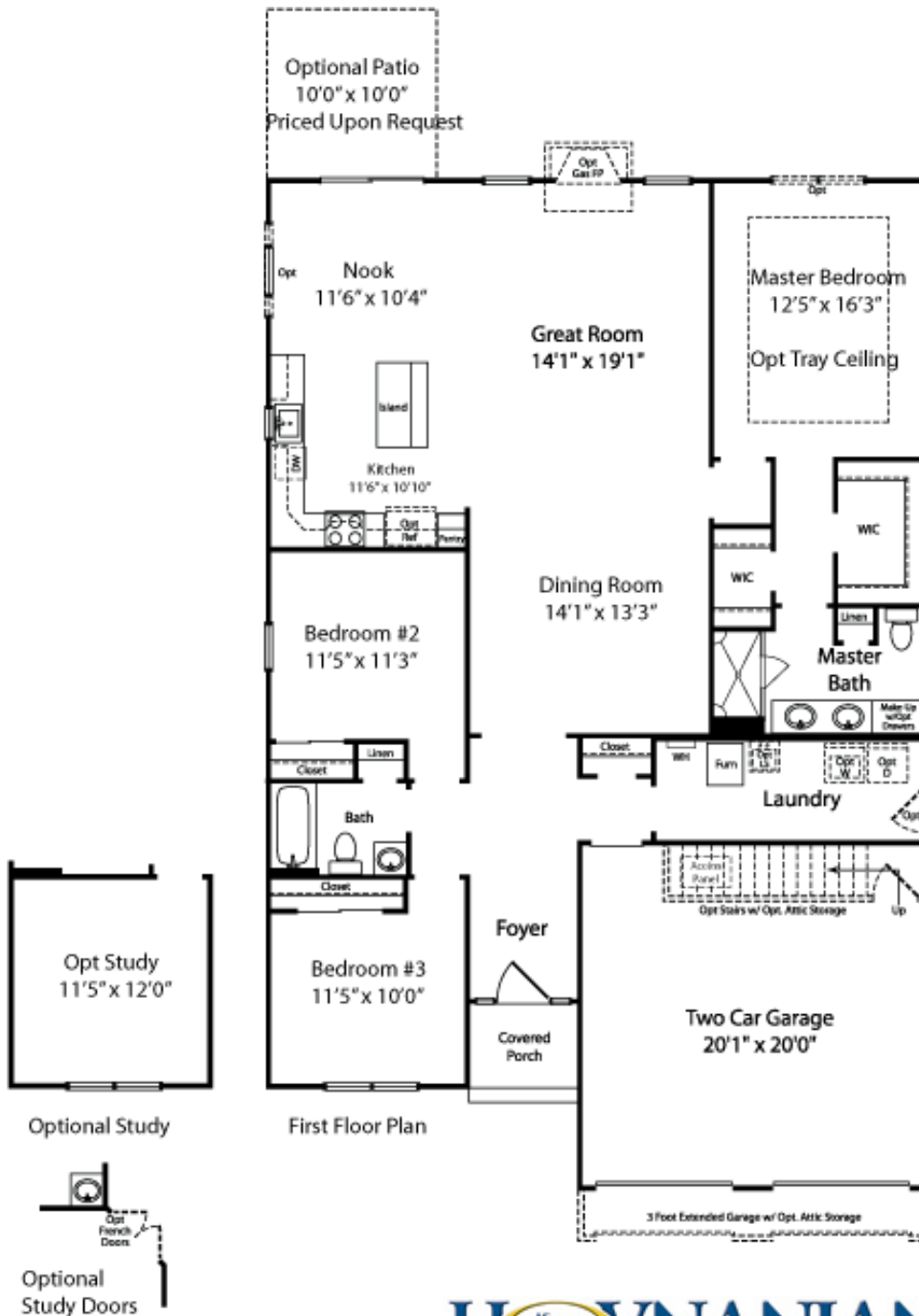


Stirling Glen
Joan"Joni" Weirich
856-235-6912
www.HOVHomes.com/stirlingglen

Model: **Alcott** | Priced From: **302,900** | Square Footage: **1,744**

Floor Plans - Alcott

1st Floor Plan



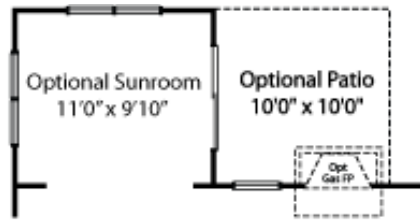
Model: **Alcott** | Priced From: **302,900** | Square Footage: **1,744**

Floor Plans - Alcott

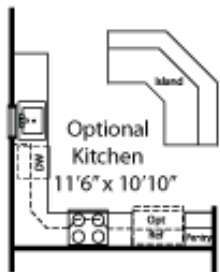
Floor plan options



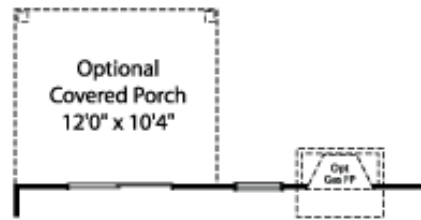
Optional Master Bath Layout



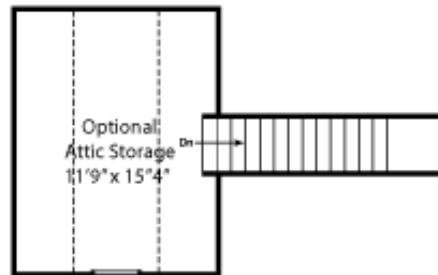
Optional Sunroom & Optional Patio



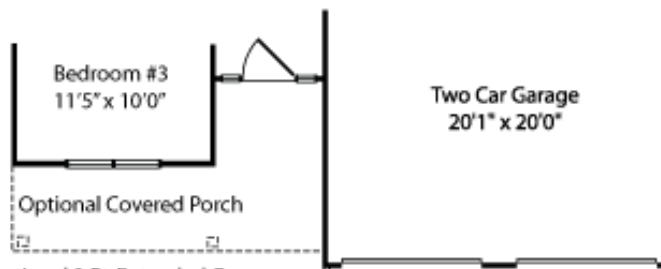
Optional Kitchen Layout



Optional Covered Porch



Optional Attic Storage



Optional 3 Ft. Extended Garage
& Optional Covered



Stirling Glen
Joan "Joni" Weirich
856-235-6912
www.HOVHomes.com/stirlingglen

Model: **Turnberry** | Priced From: **304,900** | Square Footage: **1,818**

Elevations - Turnberry



**Elevation A with Optional
Porch, Optional Shakes
and Optional Brick**

**2 Bedrooms, Study, 2
Baths, 2 Car Garage, 1st
Floor Master Bedroom with
1 Walk-In Closet, Great
Room, Dining Room, Island
Kitchen with Nook, and
Pantry Cabinet**



**Elevation B with Optional
Stone**



Stirling Glen
Joan "Joni" Weirich
856-235-6912
www.HOVHomes.com/stirlingglen

Model: **Turnberry** | Priced From: **304,900** | Square Footage: **1,818**

Elevations - Turnberry



Elevation C with Optional
Loft and Optional Stone

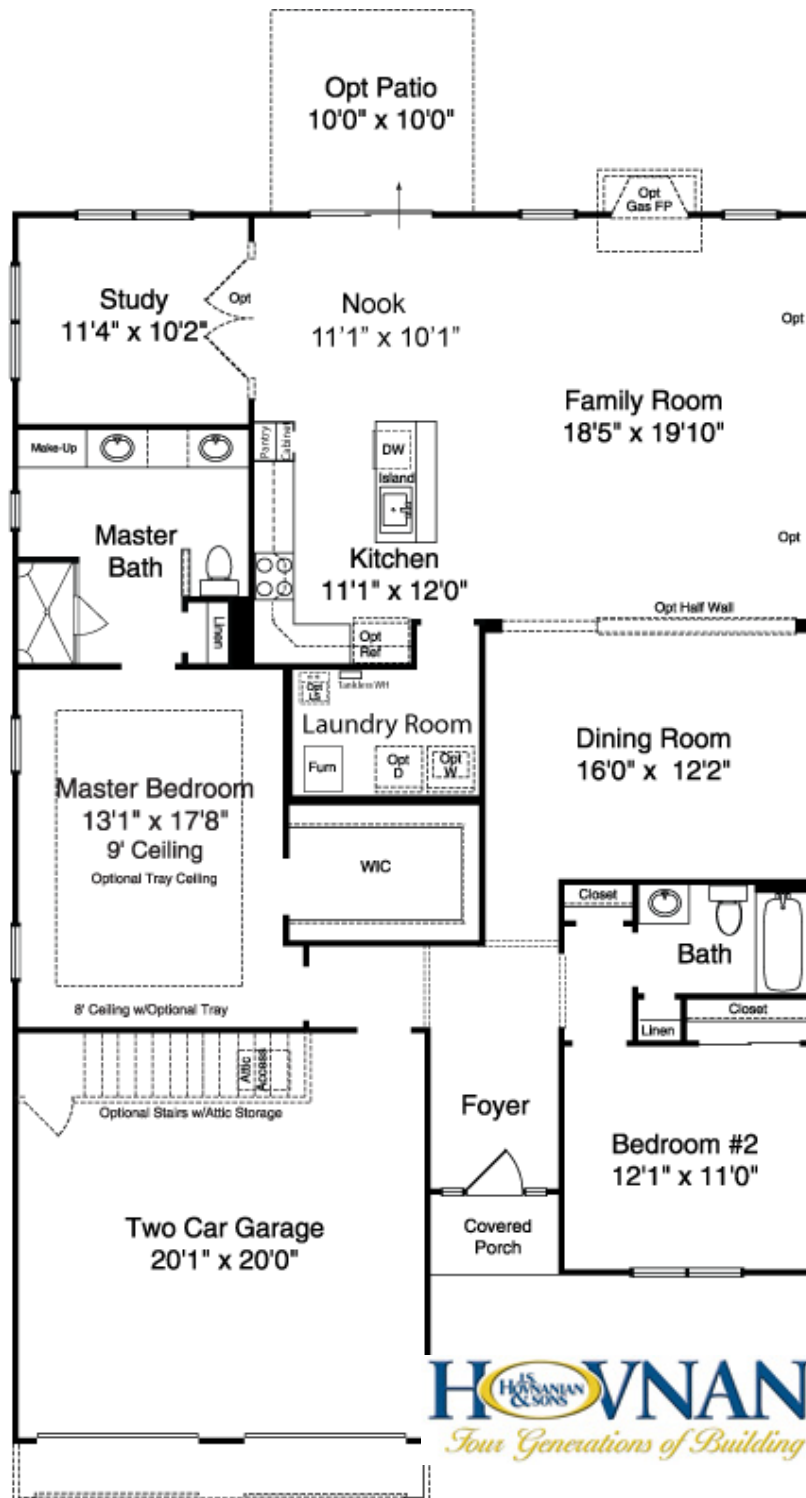


Stirling Glen
Joan"Joni" Weirich
856-235-6912
www.HOVHomes.com/stirlingglen

Model: **Turnberry** | Priced From: **304,900** | Square Footage: **1,818**

Floor Plans - Turnberry

1st Floor Plan



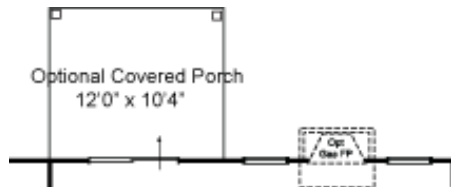
Optional 3' Extension w/Attic Storage

HOVANIAN
Four Generations of Building Excellence

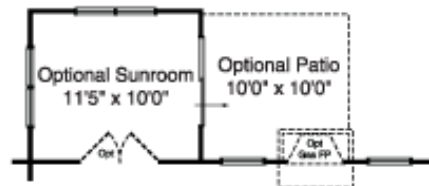
Model: **Turnberry** | Priced From: **304,900** | Square Footage: **1,818**

Floor Plans - Turnberry

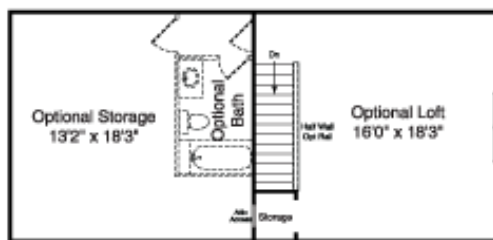
Floor Plan Options



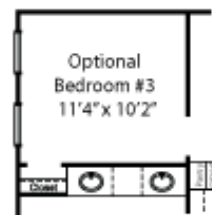
Optional Covered Porch



Optional Sunroom



Optional Loft w/Storage



Optional Bedroom #3



Optional Bedroom w/Loft & Bath



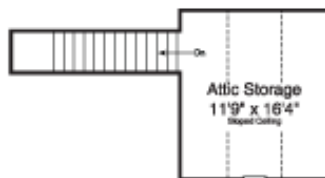
Optional Master Bath w/Tub



Optional Island



Laundry Room Stairs
w/2nd Floor Options



Optional
Attic Storage





Stirling Glen
Joan "Joni" Weirich
856-235-6912
www.HOVHomes.com/stirlingglen

Model: **St. Andrews** | Priced From: **314,900** | Square Footage: **2,032**

Elevations - St. Andrews



Elevation A

3 Bedrooms, 2 Baths, 2 Car Garage, 1st Floor Master Bedroom with 2 Walk-In Closets, Family Room, Dining Room, Island Kitchen with Nook, and Pantry Closet



Elevation B with Optional Stone and Optional Loft



Stirling Glen
Joan "Joni" Weirich
856-235-6912
www.HOVHomes.com/stirlingglen

Model: **St. Andrews** | Priced From: **314,900** | Square Footage: **2,032**

Elevations - St. Andrews

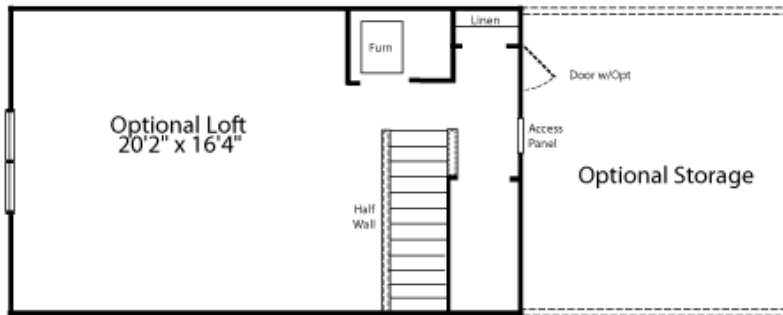
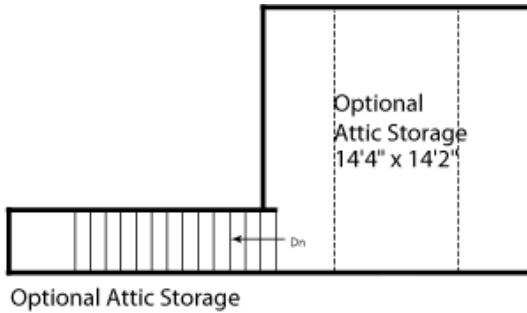


Elevation C

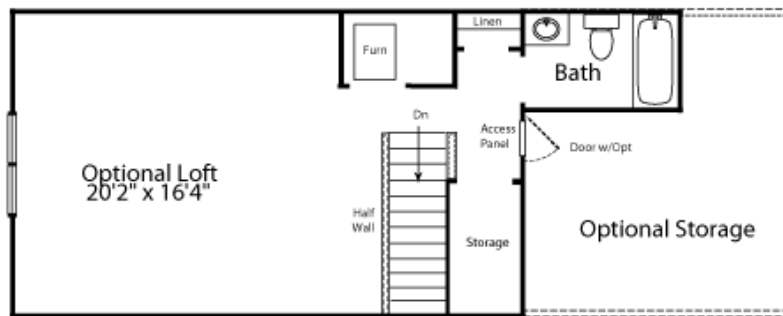
Model: **St. Andrews** | Priced From: **314,900** | Square Footage: **2,032**

Floor Plans - St. Andrews

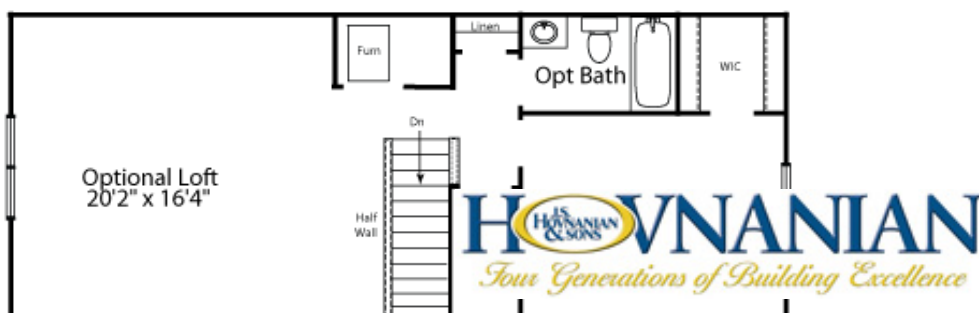
Optional Loft Plans



Optional Loft



Optional Loft & Optional Bath



Optional Bedroom #3, Loft & Optional Bath

Model: **St. Andrews** | Priced From: **314,900** | Square Footage: **2,032**

Floor Plans - St. Andrews

Floor Plan Options

