

# **FROMMEX**

## **PHOTO & DIGITAL**

**June 2026**


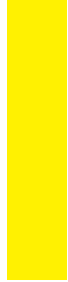


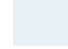





- **Digital Printing**
- **Film Processing**
- **Scanning**
- **Custom Framing**
- **Mounting & Laminating**
- **Aluminum Printing**

**2699 E 28th Street, Unit 405**  
**Signal Hill, CA 90755**  
**Ph: (562) 290-8469**  
**Email: fromexlb@gmail.com**

**[www.frommex.com](http://www.frommex.com)**

# TABLE OF CONTENTS

	General Information . . . . .	3-4
	Digital File Preparation and File Submission . . . . .	5-6
	Digital Printing . . . . .	7-8
	Digital Copy Services . . . . .	9
	Panoramic Printing . . . . .	10
	Wide Format Prints . . . . .	11
	Proof Pages and CD/DVDs . . . . .	12
	Scanning . . . . .	13-15
	Photo Restoration, Retouching & Compositing . . . . .	16
	Photo Greeting Cards & Photo Calendars . . . . .	17-18
	Photo Books and Photo Gifts . . . . .	19-20
	Aluminum Prints & Digital Photo Art . . . . .	21-22
	Life-Size Cutouts, Stick-Ups & More . . . . .	23
	Color Laser Printing . . . . .	24
	Comp Cards, Zed Cards & Headshots . . . . .	25
	Movie Film, Video & Audio . . . . .	26-27
	Color Negative Film and Prints . . . . .	28-29
	Color Enlargements from Negatives . . . . .	30
	Special Services: Passports, and Borders . . . . .	31
	Slide Film Processing, Prints and other Slide Services . . . . .	32-33
	Black & White Film & Prints . . . . .	34
	Custom Framing . . . . .	35
	Print Mounting . . . . .	36

# GENERAL INFORMATION

Welcome to Fromex Photo & Digital, a full service lab offering quality photofinishing, digital imaging and custom framing. Since 1982, we've offered fast yet professional service. Unlike other labs, we do all of our work in house. We cater to all photographers from beginners to seasoned professionals. Thank you for coming to Fromex Photo & Digital.

## Fromex Photo & Digital

2699 E. 28th Street, Unit 405, Signal Hill, CA 90755

### Hours of Operation:

Monday thru Saturday    10am to 5pm  
Sunday                      Closed

We are closed on New Year's Day, Memorial Day, 4th of July, Labor Day, Thanksgiving Day and Christmas Day. We also close early on Christmas Eve and New Year's Eve.

We stop processing film 1½ hours before closing. Online digital orders with X-Wire will be available for pick up within 1 to 2 days, you will be texted when ready. Turnaround times listed here are week-days only.

## Terms of payment

All orders are prepaid at the time of placing the order except film processing. In store we accept cash, VISA, MasterCard, American Express, Discover Card, Debit, ATM cards, Apple Pay, Samsung Pay, Google Pay, travelers checks and personal checks. Personal checks must be accompanied by a valid California driver's license. Online orders are paid through PayPal or with a credit card through STRIPE.



Open charge accounts are available to governmental agencies and schools only. Statements are paid monthly from a credit card on file. Applications are available at the counter; accounts must be approved and opened before any order is submitted (credit approval usually takes 3-5 days).

## Our guarantee of quality

Everyone here at Fromex Photo & Digital takes great pride in their work. We thank you for entrusting us with your images. We do our very best to ensure that we have produced the very highest quality prints and photo products. However, if you are not completely satisfied, please let us know. We will reprint them at our expense. We welcome your comments on our service. Thanks again.

# GENERAL INFORMATION

## **Rush services and charges**

We will try to accommodate reasonable service time requests without additional rush charges as long as there is machine availability and adequate staff. For lab work such as negative, print or slide scanning, digicopies, restoration, retouching, etc., the rush charge for faster than one day service is a minimum of \$15.00 per order. Ask a manager for pre-approval and a quote.

## **Overtime Services**

By prior arrangement, the lab will open early or remain open beyond our normal operating hours. Two weeks notice is required and the fee is \$150 per hour with a \$300 minimum.

## **Limit of liability**

Submitting any film, print, slide, negative or electronic media to Fromex Photo & Digital for processing, printing, mounting, framing, or other handling constitutes an agreement by you that any damages or loss by our company, subsidiary, or agents, even though due to the negligence or other fault of our company, subsidiary or agents, will only entitle you to replacement with a like amount of unexposed film or electronic media. Except for such replacement, the acceptance of the film, print, slide, negative or electronic media is without other warranty or liability, and recovery for any incidental or consequential damages is excluded.

Fromex Photo & Digital does not assume liability, whether lost or damaged by fire, theft, negligence or any other means, for customer supplied materials, such as frames, paintings, artwork, video tapes, etc., that are submitted with orders. Should you choose to leave materials or prints not processed in our lab for mounting or framing, we cannot assume responsibility for any damage incurred.

We cannot be responsible for materials left unclaimed for more than 30 days after completion of your order. All prices and service specifications are subject to change without notice.

## **Copyright laws**

Fromex Photo & Digital respects the right of all artists and photographers to their copyrighted materials. We accept copyrighted materials only if written permission has been granted by the copyright owner. The customer further agrees to hold harmless and indemnify Fromex Photo & Digital for any costs or judgments resulting from claim for copyright infringement by the owner or his/her lawful assigns.

# DIGITAL FILE PREPARATION

In order for us to consistently provide the highest quality results from your digital image files, we created some guidelines for file creation and organization prior to delivery to our lab. By following these guidelines, your order will not only be completed in a more timely manner, but in many cases at a lesser cost to you.

## **Prints from Digital Camera Media, Phone Media, and Mobile Devices:**

We are able to print from Compact Flash, Smart Media, Memory Stick, Memory Stick Duo and Pro, SD, SDHC, Mini-SD, Micro SD, XD, MMC, RS-MMC, Trans Flash, Mini CD, ZIP disk and Floppy disk.

- Acceptable file formats are JPEG, PNG, PSD and TIFF only.
- Most people find prints made from files with a resolution of 640x480 unacceptable. We recommend a minimum file resolution of 1600x1200 for quality 4x6 prints. See our “Resolution Explained” page on our website at [www.fromex.com](http://www.fromex.com).
- We cannot make prints from video clips.

## **Files on DVD, CD, Blu-Ray, USB Flash Drives, or delivered online:**

We accept DVD, CD, USB and “Type C” Drives, and large files sent online through [www.wetransfer.com](http://www.wetransfer.com)

- Image files must be JPEG, PSD or TIFF (we DO NOT print from files submitted in RAW format).
- All files must be saved in 8-Bit RGB color and cannot have any layers, channels, paths or LZW compression.
- Do not submit files in CMYK color.
- File names must have only one period (.) followed by jpg, tif or psd.
- There cannot be any apostrophes (‘), exclamation points (!), or other characters (#,~,%,\$, etc.).
- Files must be sized proportionately to the print size requested to avoid cropping
- Our time to fix any incorrectly formatted files or convert file types will be billed at \$60/hour.
- For photographic quality results, resolution should be 300 ppi at print size.
- Do not submit files on i-photo CDs. External hard drives will not be opened on our network.
- Files sent by email for prints smaller than 16x20 will be charged a handling fee of \$10 per order.

## **Balancing Your Monitor:**

Be aware that if your monitor is not color balanced, the files seen on our monitors and the resulting prints may not match your monitor. We have two suggestions that will help:

- 1) Free and simple – Ask for our reference print, then go to Digital File Setup Guide on our website and compare the print to your screen. Instructions are included to adjust your monitor’s color and density.
- 2) Better and accurate – Purchase one of the Datacolor ([www.datacolor.com](http://www.datacolor.com)) Spyder4 software and hardware packages. This will accurately balance all of your monitors: CRT, LCD and laptops.

## **Color Space:**

If you are using a phone, we suggest that you do not try to adjust the color or density of your images. We look at and correct each photo as we are printing them. If you are using a digital SLR camera, we ask that you shoot your images in the sRGB color space, as this is native to all digital cameras and is the color space in which our digital printers are calibrated. If you shoot raw files and convert them in Photoshop or any other program, we advise leaving them in sRGB instead of converting them to Adobe RGB or any other color space. Customers requesting prints with no corrections, do so at their own risk; redos will be at an additional charge.

## **iPhoto CDs:**

Please do not use iPhoto CDs to deliver files to us. Apple’s file organizing and sharing program called iPhoto creates multiple copies and thumbnail images in multiple folders and subfolders. Rather, select your image files and burn them to a CD with conventional CD writing software.

# SENDING DIGITAL FILES ONLINE

## X-Wire Software - Order online from phone or computer:

The X-Wire system is an easy to use web-based software that can be found on the Home Page of our website at [www.fromex.com](http://www.fromex.com). Any size prints from wallets to 40x60s can be ordered online. Also available are cropping, choice of finishes, borders, B&W, canvas prints, life-size cutouts, and more. Only JPEG files can be uploaded. Choose to pick-up in store, ship to you, or ship to another location and pay online securely through PayPal, or with a credit card through STRIPE. Prices and more information are on page 7.



## Order from your Phone or Tablet from our Mobile Website:

It's easy to order prints directly from your phone, tablet or other mobile device and pick up at Fromex. Simply access our main website from your mobile device by going to [www.fromex.com](http://www.fromex.com), or our B&W site [www.trueblackandwhiteprints.com](http://www.trueblackandwhiteprints.com)

Select Order Online - Color Prints or B&W Prints.



## Sending us PSD, TIF, PDF or other large files:

We use an online service called We Transfer to send files to us that cannot be sent any other way. It is FREE and only requires an email address.

Go to [www.wetransfer.com](http://www.wetransfer.com) and send the files to us at [info@fromex.com](mailto:info@fromex.com). Also be sure to email us directly at [fromexlb@gmail.com](mailto:fromexlb@gmail.com) to inform us that a WeTransfer is coming soon.

We DO NOT use standard email to receive image files for printing. Orders sent through email for prints smaller than 16x20 will be charged a \$15 Email Service Fee per image file, plus add 2-3 days to the order turnaround time.

## Fromex Image Recovery Services:

If you encounter problems with your digital camera memory card, such as corrupted files, missing files, or accidentally deleted files; we can help. Our image recovery services can often recover files that are lost, deleted or damaged. The cost of recovery varies from \$30 to \$250 depending upon the size of your camera memory card. There is no charge unless we are able to recover images. Call us or come in the store.

# DIGITAL PRINTING

## X-Wire Software - Order online at [www.fromex.com](http://www.fromex.com)

It's the easiest, fastest and most economical way to get archival quality photographs from your digital files with any JPEG file. X-Wire is compatible with any phone, computer and browser. See our website at [www.fromex.com](http://www.fromex.com)



2 Wallets . . . . .	\$ 0.99	9 x 12 . . . . .	\$ 8.95
3 x 3 Vintage. . . . .	\$ 0.59	10 x 15. . . . .	.\$16.95
3½ x 5 . . . . .	\$ 0.59*	11 x 14, 12x12 . . .	.\$16.95
4 x 5.3 / 4x6. . . . .	\$ 0.59*	11x16½, 12 x 16. .	.\$18.95
4½ x 6 . . . . .	\$ 0.59*	12 x 18. . . . .	.\$20.95
5 x 7. . . . .	\$ 3.95	16 x 20. . . . .	.\$48.00
6 x 8 . . . . .	\$ 4.95	20 x 24. . . . .	\$ 64.00
8 x 10. . . . .	\$ 6.95	24 x 36. . . . .	\$ 96.00
8 x 12. . . . .	\$ 7.95	30 x 40. . . . .	\$ 128.00
8½ x 11 . . . . .	\$ 7.95	40 x 60. . . . .	\$ 256.00

\*See the 100 Print Card Below

## The Fromex Mobile Website - Order prints directly from your phone

It's easy to order prints directly from your phone, tablet or other mobile device and pick up at Fromex. Simply access our Fromex Mobile website from your mobile device by going to [www.fromex.com](http://www.fromex.com). Select Order Online for Color Prints or B&W Prints and follow instructions.

## The \$49.00 100 Print Card

By purchasing a 100 Print Card you can reduce your 4x print cost to 49¢ each. It is good for 3x3, 3½x5, 4x4, 4x5.3, 4x6, and 4½x6 color prints ordered online. We also have a 500 4x print card for \$230.00 (46¢ ea.), a 1000 4x print card for \$430.00 (43¢ ea.), and a 100 5x7 card for \$175.00 (\$1.75 ea.).

# DIGITAL PRINTING

## Digital prints from any media, camera card, or mobile device

This is a superior archival digital printing process on real photographic paper. We can download files from any mobile device, CompactFlash, Smart Media, Secure Digital (SD), XD, Sony Memory Stick, floppy disk, CD-R, DVD, USB Drive or ZIP. Pricing is for the download and printing of the entire media card/disk.

Download & (1) 4x5.3 ea. or (1) 4x6 ea. ....	\$ 8.95 + \$ 0.59 per print
Download & (1) 4½x6 full frame ea .....	\$ 8.95 + \$ 0.59 per print
Download & (1) 5x7 ea. ....	\$ 8.95 + \$ 1.75 per print
Download & (1) 6x8 full frame ea. ....	\$ 8.95 + \$ 2.25 per print

*A second set of prints is one-half price at the time of download.*

## Digital reprints & enlargements quantity breaks

Reprint prices and a download fee apply if we have to select individual files from your media using a customer-provided list of file names. Finish available in glossy or luster.

Discounted quantity price breaks are only available in-store and not with online orders. Files should be brought into the store on a CD, DVD or standard USB or “Type C” drive (no external hard drives).

Digital reprints from any media or camera card:

Size	1st	2-9	10-49	50-99	100-499	500+
2x, 3x, 4x	\$ 0.99	0.89	0.49	0.39	0.34	0.30
4½x6 FF	\$ 0.99	0.99	0.49	0.39	0.34	0.30
5x7	\$ 3.95	2.95	1.95	1.50	1.00	0.75
6x8 FF	\$ 4.95	3.95	2.95	1.95	1.50	1.00
8x10 / 7x10	\$ 6.95	4.95	3.95	2.95	1.95	1.50
8½x11 / 8x12	\$ 7.95	4.95	3.95	2.95	1.95	1.50
9x12	\$ 8.95	5.95	4.95	3.95	2.95	2.25
10x15 / 11x14	\$ 16.95	10.95	7.95	6.50	5.50	4.50
12x18	\$ 20.95	13.95	10.95	6.95	6.00	5.00
12x24	\$ 24.95	15.95				
12x30	\$ 29.95	17.95				
12x36	\$ 34.95	19.95				

*Note: Digital prints can be produced from any media; TIFF, PSD or JPEG digital files only, and should be sized appropriately at 300ppi for maximum quality output. See file preparation on page 5. Turnaround time is usually 1 - 2 days depending on our workflow.*

# DIGITAL COPY SERVICES

## DigiCopy

DigiCopy is a premium quality print to print archival photographic process. It is only one generation from your original print and will provide the best possible reproduction of your original. Your print is scanned, color, density and contrast corrected, and printed on a state of the art digital printer. The image is provided on a CD, DVD or USB drive along with the new print. For additional future reprints or enlargements merely bring in the media provided.

## DigiCopy Prices

Excellent color reproduction and an amazing preservation of detail from heirloom family photos or any print for which you no longer have a negative. Prints can be enlarged or reduced; cropping is available. Your choice of glossy or matte paper. Standard turnaround is 1-2 days.

Finished print size	Price	Quantity from same original				
		2-9	10-49	50-99	100-499	500+
2x3 .....	\$ 9.95 .....	0.89 .....	.049 .....	.039 .....	0.34 .....	0.30
3x5 .....	\$ 9.95 .....	0.89 .....	.049 .....	.039 .....	0.34 .....	0.30
4x6 .....	\$ 9.95 .....	0.89 .....	.049 .....	.039 .....	0.34 .....	0.30
5x7 .....	\$ 13.95 .....	2.95 .....	1.95 .....	1.50 .....	1.00 .....	0.75
6x8/9 .....	\$ 14.95 .....	3.95 .....	2.95 .....	1.95 .....	1.50 .....	1.00
8x10 or 8x12 .....	\$ 16.95 .....	4.95 .....	3.95 .....	2.95 .....	1.95 .....	1.50
10x15 .....	\$ 24.95 .....	10.95 .....	7.95 .....	6.50 .....	5.50 .....	4.50
11x14 .....	\$ 24.95 .....	10.95 .....	7.95 .....	6.50 .....	5.50 .....	4.50
12x18 .....	\$ 27.95 .....	13.95 .....	10.95 .....	6.95 .....	6.00 .....	5.00

*Note: Fromex will not reproduce any copyrighted materials without written consent. See pg 4*

## Prints from large transparencies, overheads and X-rays

This is a direct positive to positive print with excellent sharpness and color reproduction. Transparencies are back-lit and scanned to a digital file. Maximum original size for all back-lighted materials is 11x17 inches. Standard sizing is normally 1:1, although reduction or enlargement is available. Surface is glossy or matte. The same prices and quantity breaks as "DigiCopy" above. In addition to the prints, a CD of the scan is provided.

See page 11 for Wide Format Prints.

See page 14 for scanning materials larger than 11x17.

# PANORAMIC PRINTS

## Panoramic prints from your film or digital files

Panoramic prints can be made by cropping an existing image, stitching multiple frames together, or taking the photo with a panoramic enabled panning digital camera or mobile device.

Film type	Size	Quantity price breaks from the same negative only				
		1-9	10-49	50-99	100-499	500+
35mm Pan	4x10, 4x12	\$ 2.29	\$ 1.29	\$ 0.80	\$ 0.70	\$ 0.60
APS Pan	4x10, 4x12	\$ 2.29	\$ 1.29	\$ 0.80	\$ 0.70	\$ 0.60

## Digital Enlargement Panoramics (DEP)

We can print any width or length of pano print. Odd sizes priced as next size up.

Size	1st	2-25	26+	Size	1st	2-25	26+
4x18	\$ 6.95	3.95	2.50	8x18	\$ 14.95	7.95	5.50
4x24	8.95	4.95	3.50	8x24	16.95	10.95	7.00
4x30	11.95	5.95	4.50	8x30	20.95	12.95	8.50
4x36	13.95	6.95	5.00	8x36	24.95	15.95	10.00
5x18	\$ 8.95	4.95	3.50	10x24	\$ 20.95	13.95	7.00
5x24	10.95	6.95	4.50	10x30	24.95	15.95	10.50
5x30	13.95	7.95	5.50	10x36	29.95	17.95	12.50
5x36	16.95	9.95	6.50	(11x panoramics same as 12x)			
6x18	\$10.95	6.95	4.50	12x24	\$ 24.95	15.95	10.00
6x24	12.95	7.95	5.50	12x30	29.95	17.95	12.50
6x30	15.95	9.95	6.50	12x36	34.95	19.95	15.00
6x36	19.95	12.95	8.00				

Prints larger than 36" long will be printed as wide format, max length is 90". See page 11.

\* Quantities of more than 100 pano prints require a quote.

*Note: Panoramic prints can be produced from any media; TIFF, PSD or JPEG digital files only, and should be sized appropriately at 300ppi for maximum quality output. See file preparation on page 5. Turnaround time is usually 1 -2 days depending on our workflow. Price for stitching together multiple digital files requires a price quote.*

# WIDE FORMAT PRINTS

## Large Custom Color and B&W Digital Enlargements

Our large color and B&W digital enlargements are premium quality archival prints with 100 year color permanence, perfect for framing and display. They are color and density corrected and are available on your choice of paper (see below). Cropping and color matching are available. Your original image can be a negative, slide, print or digital file. We can add text, create composites or collages, and provide restoration or retouching for an additional charge.

<i>Print Sizes</i>	<i># Sq. Foot</i>	<i>Photo Luster \$16.00/ Sq.Ft.</i>	<i>Watercolor Paper \$18.00/ Sq.Ft.</i>	<i>Smooth Fine Art \$20.00/ Sq. Ft.</i>	<i>Artist's Canvas \$26.00/ Sq.Ft.</i>
16x20, 16x24 & 18x24. . . . .	3. . . . .	\$48.00. . . . .	\$54.00 . . . . .	\$60.00 . . . . .	\$78.00
20x24 & 24x24. . . . .	4. . . . .	\$64.00. . . . .	\$72.00 . . . . .	\$80.00 . . . . .	\$104.00
20x30, 22x28 & 24x30. . . . .	5. . . . .	\$80.00. . . . .	\$90.00 . . . . .	\$100.00 . . . . .	\$130.00
24x36. . . . .	6. . . . .	\$96.00. . . . .	\$108.00 . . . . .	\$120.00 . . . . .	\$156.00
24x48 (pano) . . . . .	8 . . . . .	\$128.00. . . . .	\$144.00 . . . . .	\$160.00 . . . . .	\$208.00
30x40 . . . . .	8 . . . . .	\$128.00. . . . .	\$144.00 . . . . .	\$160.00 . . . . .	\$208.00
36x48 . . . . .	12 . . . . .	\$192.00. . . . .	\$216.00 . . . . .	\$240.00 . . . . .	\$312.00
40x60 . . . . .	16 . . . . .	\$256.00. . . . .	\$288.00 . . . . .	\$320.00 . . . . .	\$416.00

## Five Paper / Substrate Choices

**1. Photo Luster** - This is a premium (10.4 mil) heavyweight resin coated luster paper. It is bright white, archival and water resistant.

- Encapsulation with a 3 mil heat seal glossy laminate on both sides is recommended if the print is not being mounted or framed. Encapsulation is \$5/sq.ft.
- Lamination with 5 mil glossy is \$5/sq.ft. and 5 mil matte or satin is \$6/sq.ft.

**2. Watercolor**- This heavy weight watercolor textured paper (12 mil 300 gsm) is ideal for artwork.

**3. Smooth Fine Art**- This smooth fine art paper (15 mil 270 gsm) is 100% rag and neutral white. It is acid-free archival quality and perfect for color or black & white work.

**4. Artists' Canvas**- This is a waterproof artists' canvas made from 100% cotton. It is neutral white and has a textured (19 mil 350 gsm) weave. We topcoat all stretched canvas prints with a clear finish to seal and protect the print; your choice of glossy, satin, or matte finish. Note that canvas requires 2" of material all around for stretching on a wood frame. A United Inch (U.I.) is length + width.

- Stretching for framing with white edges or gallery wrapped on 5/8" stretcher bars is \$1.25/U.I.
- Stretching with gallery wrapped edges on 1 3/8" stretcher bars is \$1.75 /U.I.

Ask us about all custom framing and finishing options for canvas prints.

# CONTACT SHEETS & CD/DVDs

## Digital Contact Sheet (DCS) from Film

From 35mm or APS film, the images are actual film size on an 8x10 sheet. From 120 film, the images are enlarged to about 80% of actual film size on an 8x12 sheet. Each frame is individually color and density corrected to produce a better image. Available from color or B&W, negatives, or uncut slide rolls and 120/220 transparency film.

Process & DCS only (color or B&W) . . . . .	\$ 16.49	Turnaround 4 Hours
DCS w/dev & print, processed rolls . . . . .	\$ 10.00	1-2 Day
From cut strips of 35mm film . . . . .	\$ 15.00/page	
DCS additional pages . . . . .	\$ 4.00	

## CD/DVD Burning and Duplicates:

Camera card images to CD.....\$ 5.00  
 Camera card images to DVD .....\$ 12.00

Quantity	1-9	10-49	50-99	100+
Duplicate Data CDs .....	\$5.00	\$4.00	\$3.50	\$3.00
Duplicate Data DVDs .....	\$10.00	\$8.00	\$6.50	\$5.00

See page 27 for duplicate Video DVDs.

# LOW, STANDARD & HI-RES FILM SCANNING

## Low Res CD - Individual JPEG files approx 4.5mb ea. - \$8.95/roll

These Low-Res economy scans are for screen viewing, e-mail or the web, but may not be suitable for making photographic quality prints larger than 4x6. These 4Base scans are color/density corrected. The Low-Res CD is available from 35mm, APS and 120/220 color or B&W film. The price is \$8.95 per roll of uncut film, regardless of how many rolls are written to each CD (max. of ten rolls per CD). Additional charge of \$5 for rolls of cut film.

<u>35mm Pixel - File Size</u>	<u>6x4.5 Pixel - File Size</u>	<u>6x6Pixel - File Size</u>	<u>6x7 Pixel - File Size</u>
1536 x 1024 - 4.5 mb	1255 x 1024 - 3.7mb	1039 x 1024 - 3.0 mb	1544 x 1024 - 4.5mb

APS Film: Pixel Size of 1795 x 1024 and File Size of about 5.2 mb

35mm Half Frame: Pixel Size of 1452 x 1024 and File Size of about 4.25 mb

**Note: File size for JPEG is measured when open, not as the compressed file on the desktop or CD.**

**Low-Res CD at time of processing      \$ 8.95 per roll      1-3 Day Turnaround (CDRL)**

## Standard Res CD - Individual 12-18mb JPEG or TIFF files - \$16.95/roll

Our standard resolution scans of 35mm, APS and 120/220 color or B&W film are color/density corrected. From these standard-res scans we make true photographic quality prints up to 11x14. Scanning 220 film is priced as two rolls of 120 film. A 35mm x 36 exposure roll requires 2 CDs for TIFF files. The price is \$16.95 per roll of uncut film, there is an additional charge of \$5 for rolls of cut film.

<u>35mm Pixel - File Size</u>	<u>6x4.5 Pixel - File Size</u>	<u>6x6Pixel - File Size</u>	<u>6x7 Pixel - File Size</u>
3072 x 2048 - 18.0 mb	2798 x 2048 - 16.3 mb	2080 x 2048 - 12.1 mb	2512 x 2048 - 14.7 mb

APS Film: Pixel Size of 3590 x 2048 and File Size of about 21.0 mb

35mm Half Frame: Pixel Size of 2905 x 2048 and File Size of about 17.0 mb

**Note: File size for JPEG is measured when open, not as the compressed file on the desktop or CD.**

**Standard-Res CD at time of processing.      \$ 16.95 per roll      1-3 Day Turnaround (CDR)**

## High Res CD/DVD - Individual 48-81mb JPEG or TIFF files \$26.95/roll

The Hi-Res CD is also available from 35mm and 120/220 color or B&W film. The images are scanned to CD or DVD and written to the root directory in either JPEG or uncompressed TIFF file format. You may need image editing software like Photoshop to open or view them. These files are color corrected. Scanning 220 film is priced as two rolls of 120 film. The price is \$26.95 per roll of uncut film, there is an additional charge of \$5 for rolls of cut film.

<u>35mm Pixel - File Size</u>	<u>6x4.5 Pixel - File Size</u>	<u>6x6Pixel - File Size</u>	<u>6x7 Pixel - File Size</u>
5000x3333 - 48.1 mb	4800x3500 - 48.8mb	4800x4800 - 65.8mb	5900x4800 - 81.3mb

APS Film: Pixel Size of 5850 x 3333 and File Size of about 56.0 mb

35mm Half Frame: Pixel Size of 4181 x 2948 and File Size of about 35.0 mb

**Note: File size for JPEG is measured when open, not as the compressed file on the desktop or CD.**

**Hi-Res CD at time of processing.      \$ 26.95 per roll      1-3 Day Turnaround (CDRH)**

# SINGLE FRAME SCANNING

## Scans from Single Cut Negs or Selected Frames (film smaller than 4x5)

110/126 negs, includes a print (~10mb)	\$ 5.00 ea	1-3 Days	\$15.00 min.	(CR110/CR126)
35mm single cut negs or selected frames	\$ 5.00 ea	1-3 Days	\$15.00 min.	(CDRX)
120/220 single cut negs or selected frames	\$ 5.00 ea.	1-3 Days	\$15.00 min.	(CDRX120)

*The above scans are for any resolution.*

Odd sized single cut negs: (by quantity)

Low-Res scans approx 4mb:	\$6.00 (1)	\$5.00 (2-9)	\$4.00 (10+)	(CDRXODD4)
Standard scans approx 18mb:	\$8.00 (1)	\$6.00 (2-9)	\$5.00 (10+)	(CDRXODD18)
Hi-Res scans approx 48mb:	\$10.00 (1)	\$8.00 (2-9)	\$6.00 (10+)	(CDRXODD48)

## Custom Scans from prints and any size film including 4x5, 5x7 or 8x10

Scan file size	Price per scan	Maximum recommended print size
15 mb or less	\$10.00	6x8 (ZSCAN2)
16 – 30 mb	\$15.00	9x12 (ZSCAN3)
31 – 50 mb	\$20.00	12x18 (ZSCAN4)
51 – 70 mb	\$25.00	20x30 (ZSCAN5)
71 – 100 mb	\$30.00	30x40 (ZSCAN6)
100+ mb	Quote	40x60 (ZSCAN7)

Our digital imaging department handles all custom scanning from any source, to any file resolution, in any file format, cropped to your specs, and on any media.

<u>Print size guide</u>			
8 x 10 @ 300ppi	2400 x 3000 pixels	20.6 mb	
8 x 12 @ 300ppi	2400 x 3600 pixels	24.8 mb	
10 x 15 @ 300ppi	3000 x 4500 pixels	38.7 mb	
11 x 14 @ 300ppi	3300 x 4200 pixels	39.7 mb	
12 x 18 @ 300ppi	3600 x 5400 pixels	55.7 mb	
16 x 20 @ 200ppi	3200 x 4000 pixels	36.7 mb	
20 x 30 @ 200ppi	4000 x 6000 pixels	68.7 mb	
24 x 36 @ 200ppi	4800 x 7200 pixels	98.9 mb	

## Creating a Digital File from Large Prints

Prints larger than 12”x 18” will need to be custom scanned in sections and then seamlessly combined to create a single large digital file. The Standard resolution is 300ppi at the original print size. The total cost to create the final digital file is as follows:

2 sections ...\$50.00	3 sections ....\$ 75.00	4 sections .... \$100.00 (POS: zscanpiece)
-----------------------	-------------------------	--

# PRINT & SLIDE SCANNING

## Print Scanning

There is finally an economical solution for archiving all of your photos. We can now quickly scan all of your prints to a CD, DVD or USB drive for as little as 60¢ each.



1-24 prints @ \$3.00 each (Min \$15.00)  
25-99 prints @ \$1.25 each  
100-499 prints @ \$1.00 each  
500 or more prints @ 60¢ each

Prints must be loose, not in albums  
No tape, glue, staples or tears  
Sizes from 3½ x5 to 8x10s  
No polaroids, mounted prints, negs or slides  
Non-conforming prints are custom scanned for \$3.00 ea.

JPEG file resolution is 300ppi at the original size  
This is intended for archiving purposes  
Add one 4x6 print of each for 49¢ each  
Index proof pages are \$4.00 each  
Additional CD's are \$5.00 each

## Slide Scanning

Bulk scanning as low as 60¢ each.



1-20 slides @..... \$2.50 each (Min \$25.00)  
21-40 slides @..... \$1.50 each  
41-80 slides @..... \$1.25 each  
81-200 slides @.... \$1.10 each  
201-400 slides @.. \$1.00 each  
401-800 slides @. \$0.80 each  
801-1000 slides @ \$0.70 each  
1000+ slides @..... \$0.60 each

Slides should be loose, rubber banded in stacks of 100, and numbered in order from 1-100. Orders received with slides in carousel trays will be charged \$10 per tray to unload and reload. Minimum order of 10 slides. Plastic, cardboard or glass mounts ok. 35mm, 126 and 110 only; 120 size are scanned for \$5.00 ea.

The optical scan resolution is approximately 2400 x 3600 pixels with a JPEG file size of about 25MB when opened. Files can be put on CD, DVD or a USB drive. This is intended for archiving purposes. Cleaning slides and/or image restoration is available by quote. Add one 4x6 print of each image for 49¢ each; index proof pages at \$4.00 ea.

# PHOTO RESTORATION

## Restoration, retouching, and compositing

We restore old or damaged color and B&W photos, take people or objects out of pictures, add color to black and white photos, and more. All work includes the restored image file on CD, DVD or USB drive. The file will be sized at 300 ppi resolution at the largest print size ordered.

<b>Condition</b>	<b>Description</b>	<b>Price</b>	<b>Code</b>
Very Light	Dust spots, color/contrast adjustment	\$ 55.00	zr1
Light	Scratches, small tears or date removal	\$ 75.00	zr2
Medium light	Significant scratches, spots , tears, stains and fading.	\$ 100.00	zr3
Medium	Significant scratches, smudges or spots, stains or handwriting removal. Composite: add, move or delete people	\$ 125.00	zr4
Medium heavy	Major scratches, major marks, rips, full colorization, repair faces.	\$ 175.00	zr5
Heavy	Many rips and tears, missing pieces. surface damage	\$ 250.00	zr6
Extremely heavy	Total restoration, extensive damage	By quote	zr7



Colorized



Restored

# PHOTO GREETING CARDS



## How to create and order Photo Greeting Cards online:

We offer beautiful 4"x 8" and 5"x 7" flat photo greeting cards in both glossy or matte finish. We also offer 5x7 2-sided cards online and 5x7 folded custom cards, and 6x6 1 and 2 sided cards online. There are a huge variety of templates available online. There are cards for Christmas, New Year's, Hanukkah, Halloween, Graduation, New Address, Weddings, Valentine's day, Easter, Party Invitations, Birth Announcements and "Create Your Own Cards". Just go to [www.fromex.com](http://www.fromex.com) and select the "Cards & Invitations" button on the home page. Follow the on-screen instructions and you can pick up the cards in 1-2 days at Fromex. The option is also available to have the cards mailed to you. Envelopes are always included.

*If you have created your own finished design for either 4x8 or 5x7 cards, select "Create Your Own Card" online and upload your file in the online order. Envelopes are included.*

Photographic Cards 4x8, 5x7 & 6x6 Flat Cards		Digital Press Printed Card Stock			
Quantity	Prices	5x7 Folded Cards		5x7 2-Sided Cards	
10-24	\$ 2.00	\$ 1.99	Glossy or Matte	\$1.99	
25-49	1.25	2.59	Linen 80#	2.19	
50-99	1.10	2.79	Artist White 88#	2.39	
100-499	1.00	3.19	Metallic 98#	2.69	
500+	0.75				
		6x6 1-Sided Cards		6x6 2-Sided Cards	
		\$ 2.25	Glossy or Matte	\$2.75	
		2.75	Linen 80#	3.25	
		2.95	Artist White 88#	3.50	
		3.25	Metallic 98#	3.75	

Standard envelopes sold separately \$0.10 ea. Linen, Artist and Metallic envelopes \$0.50 ea.

# PHOTO CALENDARS

## The Jewel Case Photo Calendar:

This calendar can be mailed in the jewel case and opens easily for display on a desk or tabletop. Calendars are available in glossy or matte finish, and with black or white background. Order online or we make it from your files.



Digital files should be JPEG format with a resolution of 600 x 800 or higher.

First calendar... \$ 24.95 from digital files or \$ 29.95 from prints or film

Quantity breaks: 2-9.....\$ 12.95 each                      100-499 . . . . \$ 6.95 each  
 10-49... . . \$ 9.95 each                                      500 + . . . . . \$ 5.95 each  
 50-99 . . . . \$ 7.95 each

## 8½x11 or 12x12 Hanging Wall Calendars:

These two-piece wall calendars come in a variety of designs and templates. You can customize each page by adding text, colored backgrounds and multiple photos. Spiral bound to easily hang on the wall. Order online only.

8½x11..... \$29.95      12x12.....\$39.95



## The 11x14 Wall Photo Calendar:

These beautiful wall calendars are made on real 11” x 14” photographic paper. Bring in a CD or USB drive with your 12 images. Each photo is approximately 8” x 10” on the calendar and should be a resolution of 1600x2000 or better. Horizontal images work best. They can be printed with a black or white background and on glossy or matte paper. Each calendar has a full index page showing all months, and they are wire bound on top for easy hanging. Turnaround time is 2-4 days. Order in-store only.



\$59.95 for the first calendar  
 \$49.95 ea. for 2-9 quantity of the same calendar  
 \$39.95 ea. for 10 or more

## Full Year Wall Calendar:

The one piece full year calendars come in a large variety of designs, colors and templates; order online only.

Photographic quality 8x10s .....\$12.95                      11x17s.....\$ 19.95

## Magnetic Backed 8½x11 Calendar:

Magnetic 8½x11 full year refrigerator calendars online only.....\$ 15.95



# 1 DAY PHOTOBOOKS

## Hardcover Photo Books (no window) - Order Online Only

From our website online (select the 1 Day Photo Books), you can make a book in a few minutes. Simple creation by just dragging your photos to each page or using the auto-fill feature; you can arrange the photos and add text anywhere. Lots of templates to choose from. Hard cover books come in your choice of colors: black, white, beige, blue, pink, red and more. Limited to stock on hand.

8½" x 11" - 10 page Photo Books.....\$ 29.95 plus \$1.50 per add'l page  
12" x 12" - 10 page Photo Books ..... \$ 39.95 plus \$2.50 per add'l page

## Soft Clear Cover Photo Books - Order Online Only

8½" x 11" - 10 page Photo Books.....\$ 24.95 plus \$1.50 per add'l page  
12" x 12" - 10 page Photo Books ..... \$ 34.95 plus \$2.50 per add'l page



## Premium Photo Books with Cover Window- Order Online Only

From our website online (select the 1 Day Photo Books), you can make a book in a few minutes. Simple creation by just dragging your photos to each page or using the auto-fill feature; you can arrange the photos and add text anywhere. Lots of templates to choose from. Premium window photo books come in your choice of cloth covers: black, gray, beige, and more. Leather covers are black only. Limited to stock on hand.

8½x11 Leather window cover with 10 pgs	\$ 49.95	Additional pages are \$1.50 each
8½x11 Cloth window cover with 10 pages	\$ 39.95	Additional pages are \$1.50 each
12x12 Leather window cover with 10 pgs	\$ 59.95	Additional pages are \$2.50 each
12x12 Cloth window cover with 10 pages	\$ 49.95	Additional pages are \$2.50 each

# PHOTO GIFTS

## Order your Photo Gifts online only

All of these cool photo gifts can be ordered online from our website at [www.fromex.com](http://www.fromex.com). Just click on the Photo Products menu.

### Beverage Containers

- 11 oz Mugs \$15.95 (R or L): Full Wrapped Image . . . \$19.95
- 15 oz Mugs \$19.95 (R or L): Full Wrapped Image . . . 24.95
- 14 oz Stainless Travel Mugs in Silver or White . . . . . 29.95
- 600 ml Aluminum Water Bottles in Silver or White . . . 24.95

Mouse Pads 8" x 10" . . . . . \$ 16.95

### Coasters

Cork bottom set of 4 with base . . . . . \$ 29.95

Photo Puzzles - 11x14 with 130 or 252 pieces ... \$ 29.95  
8x10 Kid's puzzles 12 or 30 pcs. 19.95

### Hi-Gloss Hardboard Photo Panels

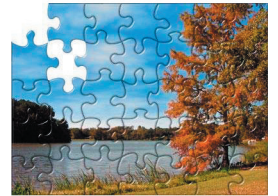
- 5x7 with easel . . . . . \$ 29.95
- 8x10 with easel. . . . . 39.95
- 10x10 with easel . . . . . 49.95

### Photos on Slate & Tiles

- Photo on 6x8 Slate with stand..... \$ 29.95
- Photo on 8x8 Slate with stand..... \$ 34.95
- Photo on 8x12 Slate with stand..... \$ 44.95

### Photos on 1.5" thick Bamboo/Walnut Blocks

- |                   |                    |                    |
|-------------------|--------------------|--------------------|
| 2"x3"....\$ 35.00 | 5"x7" ....\$ 55.00 | 8"x10"....\$ 79.00 |
| 4"x4"....\$ 39.00 | 6"x6" ....\$ 59.00 | 8"x12"....\$ 89.00 |
| 4"x6"....\$ 45.00 | 6"x9" ....\$ 66.00 | 11"x14"..\$145.00  |
| 5"x5"....\$ 49.00 | 8"x8" ....\$ 69.00 |                    |



See Prints on Aluminum on page 21

# PRINTS ON ALUMINUM

## Prints on Aluminum are available in 4 different surface finishes:

- White Gloss - Brilliant high gloss surface that shows every detail. This is the most accurate photo quality look.
- White Matte - Same as above, but with a smooth, very even and soft appearance.
- Clear Gloss - Natural brushed aluminum look with a glossy finish. Allows the brushed aluminum silver surface of the metal to show.
- Clear Matte - Natural brushed aluminum look with a matte finish.



## Single Aluminum Prints

Single Aluminum Prints are available in any size up to 48x96. The aluminum wall mount allows the aluminum panel to float 3/4" from the wall. See easels and wall mounts below for prints smaller than 16x20.

			<u>Wall Mount</u>
Less than 15 sq.in. ...\$9.95	8" x 18".....\$62.95	16" x 24".....\$172.95	45.00
3"x5" or 4"x4" ..... \$14.95	11"x 11" or 11"x 14"..... \$62.95	20" x 24" ..... \$216.95	48.00
4"x5" or 4"x6".....\$22.95	12" x 12".....\$62.95	20" x 30".....\$249.95	50.00
5"x 5" to 5"x7" ..... \$31.95	10" x 18".....\$77.95	24" x 30".....\$310.95	55.00
6"x 6" to 6"x9" ..... \$39.95	12" x 16".....\$86.95	24" x 36".....\$369.95	60.00
8"x 8"to 8"x10" ..... \$46.95	12" x 18" .....\$ 93.95	30" x 40" .....\$549.95 **	65.00
8" x 12"..... \$54.95	16" x 20".....\$153.95*	40" x 60" .....\$999.95 **	70.00

Custom sizes are 44¢ per sq. in. For sizes larger than 40x60 call for a quote. \*16x20 wall mount \$40.00.

\*\* Shipping prints 30x40 and larger will require LTL freight shipping at an additional charge.

## Double Aluminum Prints

Double Aluminum Prints are a unique way to display your photos on metal. A single aluminum print is floated 1/2" off the surface of a second, larger print, creating a "framing" effect. The background piece can be one of our stock images, your image, bare metal or museum board. It can be displayed on an easel or with wall hanging brackets.

### **Double Panel with Printed Background:**

5" x 5" on 8" x 8" .....	\$79.95
5" x 7" on 8" x 10".....	\$79.95
8" x 8" on 11½" x 11½".....	\$99.95
8" x 10" on 11" x 14".....	\$99.95
8" x 12" on 12" x 16".....	\$139.95
12" x 16" on 16" x 20".....	\$249.95

### **Double Panel with Non-Printed Background:**

8" x 8" on 12" x 12" Bamboo Museum Board.....	\$162.95
8" x 10" on 11" x 13" Galvanized Steel.....	\$83.95
8" x 10" on 11" x 13" Brushed Aluminum.....	\$83.95
8" x 10" on 11" x 13" Brushed Stainless Steel.....	\$95.95
8" x 10" on 11" x 13" Mirror Stainless Steel.....	\$107.95
8" x 10" on 11" x 13" Black or Frosted Acrylic.....	\$119.95
7" x 10" on 11" x 14" Bamboo Museum Board.....	\$179.95
12" x 12" on 16" x 16" Bamboo Museum Board.....	\$287.95
12" x 16" on 16" x 20" Galvanized Steel.....	\$199.95
12" x 16" on 16" x 20" Brushed Aluminum.....	\$215.95
12" x 16" on 16" x 20" Brushed Stainless Steel.....	\$239.95
12" x 16" on 16" x 20" Mirror Stainless Steel.....	\$239.95
12" x 16" on 16" x 20" Black or Frosted Acrylic.....	\$275.95
12" x 16" on 17" x 21" Bamboo Museum Board.....	\$323.95

### **Easels, Stands & Mounts**

Aluminum Easel Small (up to 5x7) .....	\$5.00
Aluminum Easel Large (up to 11x) .....	\$9.00
Wall Mount Arrylic (4x & 5x ).....	\$5.00
Wall Mount Acrylic (8x to 12x).....	\$10.00
Wall Mount (16x20+).....	See chart above

# DIGITAL PHOTO ART

These spectacular original works of art are digitally hand drawn by artists from your photo.

1. Email your file to info@fromex.com, bring your file to us, or bring a photo, negative or slide.
  2. Select the type of art you want: a standard oil painting, impasto style, impressionist, posterized, or watercolor.
  3. Select the final size of the print from 16x20 to 40x60.
  4. Select the canvas stretching option: 5/8" thick bars for framing, or 1 3/8" thick bars with image gallery wrapped.
- The stretching price includes the lacquer finish in a choice of glossy, satin or matte.
5. You will be required to approve the artwork.
  6. Turnaround time is about 7 -10 days.

**The total price is the sum of the Artwork, Canvas Print, and one Stretcher Bar Option listed below.**

Size	Artwork	Canvas Print	Stretcher Bar Options	
			5/8"	1 3/8"
16x20	\$50.00	\$78.00	\$45.00	\$63.00
18x24	\$50.00	\$78.00	\$52.50	\$73.50
20x24	\$50.00	\$104.00	\$55.00	\$77.00
20x30	\$50.00	\$130.00	\$62.50	\$87.50
22x28	\$50.00	\$130.00	\$62.50	\$87.50
24x30	\$50.00	\$130.00	\$67.50	\$94.50
24x36	\$50.00	\$156.00	\$75.00	\$105.00
24x48	\$50.00	\$208.00	\$90.00	\$126.00
30x40	\$50.00	\$208.00	\$87.50	\$122.50
36x48	\$50.00	\$312.00	\$105.00	\$147.00
40x60	\$50.00	\$416.00	\$125.00	\$175.00

Oil Paintings



Watercolors



Dragons & Fairies



Posterized



Colorized B&W



# LIFE-SIZE CUTOUTS & STICK-UPS

## A Life-Size Cutout

It is a print mounted on 3/16" foam board with a matte laminate and a secure base. It is perfect for events and parties. If the cutout is to be shipped, we will make it in two pieces for easy assembly. For long term use, double thick foam core is an additional \$10/ft of height.

The price is based on the height and width of the cutout. A standard cutout up to 30" wide is \$35 per foot of height (minimum 3 feet), cutouts 30"-36" wide are \$40 per foot of height (minimum 3 feet), and cutouts 36"-44" wide are \$45 per foot of height (minimum 3 feet). Odd sized cutouts will require a separate quote. Talking and thought bubbles are \$40.00 each and are made to be removable from the cutout. Turnaround time 3-4 days.



## A Stick-Up

It is a removable and repositionable print with a UV lacquer protective coating and a sticky back. It can be stuck to smooth walls, glass, mirrors, cars, floors, ceilings and more. It can easily be removed without damage to walls or painted surfaces. Think of it like a giant Post-It note with a photograph on it. It can be left as a rectangle or cut out to the subject. You can easily cut it out yourself with high quality sharp scissors. A standard Stick-Up up to 24" wide is \$20 per foot of height (min 3 feet), wider Stick-Ups between 25"-42" wide are \$27 per foot of height (min 3 feet). Cutting away the background is an additional \$5 per foot. Turnaround time 3-4 days.



## The Head-on-a-Stick

This is a life-size print of a face only, mounted on cardboard or foamcore and glued to a stick for parties, or whatever you can imagine. There are three versions:

Economy - Printed on 8½x11 card stock and includes a stick; you cut it out....\$3.95

Standard - Printed on 8½x11 card stock and glued to a stick; we cut it out.....\$5.95

Deluxe - Photographic print mounted on foamcore, laminated and cut out ....\$19.95



### Life-Size Cutouts

### Stick-Ups

Height	Up to 30" wide	30"-36" wide	36"-44" Wide
3 feet	\$ 105.00	\$ 120.00	\$ 135.00
4 feet	\$ 140.00	\$ 160.00	\$ 180.00
5 feet	\$ 175.00	\$ 200.00	\$ 225.00
6 feet	\$ 210.00	\$ 240.00	\$ 270.00
7 feet	\$ 245.00	\$ 280.00	\$ 315.00
8 feet	\$ 280.00	\$ 320.00	\$ 360.00

Height	Up to 24" wide	24" - 42" wide
3 feet	\$60.00	\$ 81.00
4 feet	\$ 80.00	\$ 108.00
5 feet	\$ 100.00	\$ 135.00
6 feet	\$ 120.00	\$ 162.00
7 feet	\$ 140.00	\$ 189.00
8 feet	\$ 160.00	\$ 216.00

# 8½ x 11 COLOR LASER PRINTING

Headshots  
Flyers  
Reports  
Cards  
Graphs  
Resumes  
Manuals



Files:  
pdf  
psd  
doc  
docx  
xls  
jpg

Minimum order of 10 pages	Quantity	1-99	100-499	500+
<b>A- Premium Color Laser 28lb.</b>	1-Side	\$ 1.75	\$ 1.15	\$ 0.75
	2-Sides	\$ 2.35	\$ 1.60	\$ 1.15
<b>B- Mohawk Color Laser 32lb.</b>	1-Side	\$ 1.79	\$ 1.19	\$ 0.79
	2-Sides	\$ 2.59	\$ 1.64	\$ 1.19
<b>C- HP Premium Choice 32lb.</b>	1-Side	\$ 1.79	\$ 1.19	\$ 0.79
	2-Sides	\$ 2.39	\$ 1.64	\$ 1.19
<b>D- Mohawk Matte Cover 60lb.</b>	1-Side	\$ 1.85	\$ 1.25	\$ 0.85
	2-Sides	\$ 2.45	\$ 1.70	\$ 1.25
<b>E- HP Dual Coated Glossy 50lb.</b>	1-Side	\$ 1.90	\$ 1.30	\$ 0.90
	2-Sides	\$ 2.50	\$ 1.75	\$ 1.30
<b>F- Dual Coated Semi-Gloss 80lb.</b>	1-Side	\$ 1.95	\$ 1.35	\$ 0.95
	2-Sides	\$ 2.55	\$ 1.80	\$ 1.35
<b>K- Color Smooth Matte Cover 80lb.</b>	1-Side	\$ 1.95	\$ 1.35	\$ 0.95
	2-Sides	\$ 2.55	\$ 1.80	\$ 1.35
<b>G- Linen White 80lb.</b>	1-Side	\$ 2.05	\$ 1.45	\$ 1.05
	2-Sides	\$ 2.65	\$ 1.90	\$ 1.45
<b>M- Coated Silk 80lb.</b>	1-Side	\$ 2.05	\$ 1.45	\$ 1.05
	2-Sides	\$ 2.65	\$ 1.90	\$ 1.45
<b>H- Artist White 88lb.</b>	1-Side	\$ 2.25	\$ 1.65	\$ 1.25
	2-Sides	\$ 2.85	\$ 2.10	\$ 1.65
<b>J- Metallic Silver 98lb Cover</b>	1-Side	\$ 2.45	\$ 1.85	\$ 1.45
	2-Sides	\$ 3.05	\$ 2.30	\$ 1.85
<b>N- Dual Coated Semi-Gloss 100lb.</b>	1-Side	\$ 2.15	\$ 1.55	\$ 1.15
	2-Sides	\$ 2.75	\$ 2.00	\$ 1.55
<b>P- Color Smooth Matte Cover 100lb.</b>	1-Side	\$ 2.15	\$ 1.55	\$ 1.15
	2-Sides	\$ 2.75	\$ 2.00	\$ 1.55
<b>Q- Coated Silk 100lb.</b>	1-Side	\$ 2.25	\$ 1.65	\$ 1.25
	2-Sides	\$ 2.85	\$ 2.10	\$ 1.65

# COMP CARDS - ZED CARDS - HEADSHOTS

## Comp Cards that you design:

You can create your own comp cards online on our website. We offer both 8½x11 and 5½x8½ sizes with a multitude of template layouts to choose from.

### What we offer:

- 8½ " x 11" single or double sided cards of various designs. Some include your resume on the back. Printed on 80 or 100lb. matte, semi-gloss, or coated silk card stock.
- 5½ " x 8½" double sided cards of various designs. Also printed on 80 or 100lb. matte, semi-gloss, or premium coated silk card stock.
- 8" x 10" premium photographic prints, single side, matte or glossy.



Stephanie Rotham

### Prices:

Prices for the 80 lb. matte finish card stock.

- 8½ " x 11" single cards are \$ 5.95 (1), \$3.75 (2-9), \$1.75 (10-19), \$1.25 (20-99), 75¢ (100+)
- 8½ " x 11" double cards are \$ 6.95 (1), \$4.75 (2-9), \$2.25 (10-19), \$1.75 (20-99), \$1.05 (100+)
- 5½ " x 8½" double sided cards are \$ 6.95 (1), \$3.75 (2-9), \$1.75 (10-19), \$1.25 (20-99), 75¢ (100+)
- 8" x 10" photographic prints are \$6.95 (1-9), \$3.95 (10-99). \$1.95 (100+)

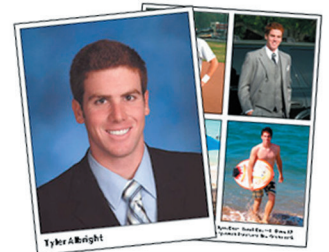
Extra charge of 25¢ ea. for 100lb. stock, and 15¢ ea. for semi-gloss and 25¢ ea. for silk



Roger Samuelson

### How to Order:

- Online from [www.fromex.com](http://www.fromex.com). You choose the template, drop in your photos and add your text. No design fee, fast and easy.
- We design it for you. \$25 fee for single sided and \$40 for double sided using standard templates. Custom designs by quote.
- You provide finished files, correctly sized in pdf, tiff, jpeg or psd.



Tyler Albright



Sarah Cunningham  
Height: 5'7"  
Weight: 115  
Eye: Brown  
Hair: Dark Brown  
Bust: 34  
Waist: 24  
Hips: 33  
Cell: 916-886-6886

### Other Stuff:

- Orders of 50 or more prints may require approval of a proof print.
- Prepayment is required at time of approval.
- Turnaround time is one day for all orders.
- All prints on have 1/4" white borders.



Alex Giboran

8½ x 11  
Single Sided



LISA MYERS

5½ x 8½  
Double Sided



James Sinclair  
Age: 27  
Height: 5'11"  
Weight: 188  
Jacket: 42M  
Eyes: Blue  
Hair: Black  
Phone: 323-324-5511



Everett Stevenson



Stephanie Rotham

8½ x 11  
Double Sided

# MOVIE FILM & VIDEO TAPE to DVD

## VHS, 8mm & Mini DV Video Tapes scanned to MP4 or DVD

This is a direct copy of up to 120 min. from VHS, 8mm Video or MiniDV video tape. This straight copy has no chapters, menus, or editing, but does include your choice of an MP4 file on USB, or a DVD with case and cover. For more than 2 source tapes scanned, add \$5.00 for each add'l tape.

Basic DVD or MP4 File on USB. . . \$39.95**	Duplicate DVD with case & cover .... \$ 19.95
Both a DVD and an MP4 file ...add \$10.00	Duplicate DVD in jewel case..... \$ 10.00

## Old Movie Film to DVD

This is a direct copy of up to 120 minutes from 8mm, Super 8, or 16mm film. This service comes with a customized full sleeve DVD case and chapter marks approximately every 5 minutes. No titles or menus are added. A 120 minute DVD holds about 1600 feet of movie film.

Base cost for transfer and burn to 2 Hour DVD.....	\$ 39.95 per DVD
Plus 8mm, Super 8 and 16mm film transfer charge. . . . .	\$ 0.24 per foot
Add an MP4 file on a USB drive...\$10.00 **	(**see additional costs below)

Turnaround 7-10 days

*Minimum charge of \$49.95 per order*

## Premium DVD Service

This is a transfer of up to 120 minutes from **VHS, 8mm Video, MiniDV, slides (8 seconds each image), photos (up to 11x14), 8mm, Super 8, or 16mm film.** This includes interactive menus and title, customized chapter marks, your music, and customized DVD display case. Turnaround is 7-10 days.

Premium DVD . . . . .	\$69.95
8mm, Super 8 and 16mm film transfer charge. . . . .	\$ 0.24 per foot
Customer specified chapter marks . . . . .	\$5.00 each
Extra titles . . . . .	\$5.00 each
Transferring from more than 4 tapes to one DVD . . . . .	\$5.00 each
Editing . . . . .	\$5.00 per edit
Continuous looping DVD . . . . .	\$5.00 extra

## **\*\*Additional Costs**

Slides recorded for 8 seconds. . . . .	\$ 0.50 each
Photos - any size up to 11x14 ( <i>for Premium DVD</i> ). . . . .	\$ 0.50 each
<i>Note: Mixed media (ie. film and photos) requires the Premium DVD</i>	
Professional High Grade VHS Tape. . . . .	\$ 8.95 each
400 ft. plastic 8mm reel with cover. . . . .	\$ 3.79 each
Extra copies at time of transfer regardless of length. . . . .	\$ 24.95 each
Tape or movie film repairs . . . . .	\$ 29.95 and up
USB Drives: You supply a blank drive or we sell a 4GB drive for an additional \$10.00	

# VIDEO TO HARD DRIVE AUDIO TRANSFER & VHS TAPE DUPS

## VIDEO TO HARD DRIVE TRANSFER

For editing on a computer, videos must be digitized. Video files are very large files so we require an empty external hard drive with at least 20 GB of free space for each hour of video. Please indicate if you need editable files for PC or MAC. . . . . \$ 34.95 for first tape, and \$29.95 for each additional tape.

## AUDIO

### Audio Transfer to CD

Audio Cassettes, LP records or Reel-to-Reel audio tape to CD . . . . . \$ 34.95 per hour  
Each CD holds approximately 74 minutes of audio.

## VHS VIDEO TAPE DUPLICATION

### Copies of video tape

We can make duplicate 1/2" VHS video tapes from any original format: VHS, VHS-C, 8mm, Hi-8, or digital Mini-DV. The price is based on the duration of play and includes the professional grade blank tape. Duplicates to or from a foreign format such as PAL or SECAM are available in 7-10 days. Discounts are available for multiple copies. Turnaround usually 1-3 days.

<i>Quantity</i>	<i>0-30 min.</i>	<i>31-60 min.</i>	<i>61-90 min.</i>	<i>91-120 min.</i>	<i>Over 120 min.</i>
1	\$ 20.00	\$ 30.00	\$ 40.00	\$ 45.00	\$ 55.00
2-4	\$ 18.00	\$ 27.00	\$ 36.00	\$ 40.00	\$ 55.00
5-10	\$ 16.00	\$ 24.00	\$ 33.00	\$ 37.00	\$ 55.00
11-24	\$ 14.00	\$ 21.00	\$ 30.00	\$34.00	\$ 55.00

# COLOR NEGATIVE FILM

## Developing only (film cut or sleeved, no prints)

35mm (no index print) . . . . .	\$ 8.95	1 Day
110, 126 and APS film (no index print). . . . .	\$ 8.95	
Advanced Photo System (APS) with index print. . . . .	\$ 10.95	
120 medium format (6x4.5, 6x6, 6x7 & 6x9) . . . . .	\$ 10.95	
220 medium format (6x4.5, 6x6, 6x7 & 6x9) . . . . .	\$ 13.95	
Vintage color film: 127 . . . . .	\$ 10.95	

## Blank Rolls

Due to the vast increase in the number of blank rolls we are receiving (rolls found in old cameras, drawers, attics, etc.), we can no longer process them for free.

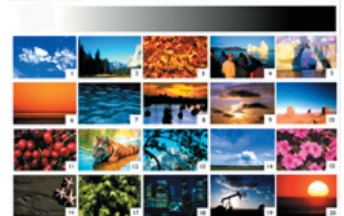
Current 35mm rolls of C-41 and B&W film that are blank after processing will be charged \$5.00 per roll.

All 120 / 220 rolls, all E6 processing, single use cameras, 110, 126, APS, vintage film types (127, 620, 616, 116, etc), all old processes like C-22, films received wet or damaged that require extra handling, and any other odd or unusual film types that are blank, will be charged the full normal process only price.

## Index prints

*Index prints are 4"x 6" prints that contain a small image of each exposure on the order. They are included free with digital orders and any roll of 35 mm, 120, or APS film that is developed and printed.*

With digital and film at time of processing and printing.... . . . .	n/c
With 35mm or APS film developed only.....	\$ 4.00
With previously processed 35mm cut negatives . . . . .	\$ 6.00
Additional index prints . . . . .	\$ 4.00



## C-41 Push processing and Cross processing

Push processing (maximum of 2 stops). . . . .	add \$ 2.00 per stop
C-41 cross processing (E-6 film processed in C-41 ) . . . . .	add \$ 2.00 per roll
35mm film cross process (E-6 film processed in C-41 ) . . . . .	\$ 10.95
120 film cross process (E-6 film processed in C-41) . . . . .	\$ 12.95
E-6 cross processing (C-41 film processed in E6 ) . . . . .	see page 32

# COLOR PRINTS FROM NEGATIVES

## Prints at time of film developing

From 35mm film	3½ x5 .....	\$ 0.59	Variable
	4x6 (full frame) .....	\$ 0.59	Variable
	5x7 .....	\$ 1.99	Variable
	6x9 .....	\$ 2.09	Variable
From 110, 126 or 127*	3½x5 to 6x6 .....	\$ 4.00	Variable
From APS film	4x6 (C format) .....	\$ 0.59	Variable
35mm half frames	4x6 .....	\$ 0.59	Variable
35mm Pan and X-Pan	4x10 or 4x12 .....	\$ 0.99	Variable
From 120/220	3.75x5 from 6x4.5 .....	\$ 1.39	Variable
	5x5 from 6x6 .....	\$ 1.39	Variable
	4x5 from 6x7 .....	\$ 1.39	Variable
	5x7 from 6x4.5 .....	\$ 2.39	Variable
	5x6 from 6x7 .....	\$ 2.39	Variable
	5x7 from 6x9 .....	\$ 2.39	Variable

*Second set of prints at time of developing is always one-half price.*

*\* Prints. Scan Only or Scan & Prints from an entire roll of 110, 126 & 127 film include a scan on CD for \$4.00 each.*

*All prints are available in glossy or matte finish and borderless or with a white border.*

*Most print sizes are also available with special borders, see page 32.*

## Reprints from Film

Film type	Size	Quantity price breaks from the same negative only					
		1-9	10-49	50-99	100-499	500+	
35mm	2-Wallets	\$ 1.19	\$ 0.59	\$ 0.39	\$ 0.34	\$ 0.30	3-7 days
35mm	3½ x 5/4x6	\$ 1.19	\$ 0.59	\$ 0.39	\$ 0.34	\$ 0.30	3-7 days
110/126/127**	3x5 to 6x6	\$ 4.00					3-7 days
Pan & X-Pan	4x10, 4x12	\$ 2.29	\$ 1.29	\$ 0.80	\$ 0.70	\$ 0.60	3-7 days
APS	4x6	\$ 1.19	\$ 0.59	\$ 0.39	\$ 0.34	\$ 0.30	3-7 days
120/220	4x5/5x5	\$ 2.39	\$ 0.99	\$ 0.60	\$ 0.50	\$ 0.40	3-7 days
120/220	2-Wallets	\$ 2.39	\$ 0.99	\$ 0.60	\$ 0.50	\$ 0.40	3-7 days

*Handling charge for all single cut 35mm and 120 negatives is \$ 1.00 each.*

*All prints are available in glossy or matte finish and borderless or with a white border.*

*Most print sizes are available with special borders, see page 32.*

*\*\*110, 126 and 127 film- Reprints at \$4.00 each include a scan of the image on CD. Additional prints are*

# COLOR ENLARGEMENTS FROM NEGATIVES

## Custom color enlargements

Standard finish on enlargements from 35mm and Advanced Photo System (APS) negatives is glossy, and from 120 negatives is matte. Please let us know if you desire otherwise. There is no additional charge. No dodging or burning. Regular simple cropping is \$1.00 extra on the first print. Custom cropping to precise lines or dimensions is \$3.00 extra. Matching color or density to another print is an additional \$3.00. Quantity orders are priced as one 1st print and the balance at quantity price. See page 32 for special borders.

## From 35mm negatives

Quantity price breaks from the same negative only

Size	1st	2-9	10-49	50-99	100-499	500+	Turnaround
5x7	\$ 3.95	\$ 2.95	\$ 1.95	\$ 1.50	\$ 1.00	\$ 0.75	1-3 Days
6x9	\$ 5.49	\$ 3.95	\$ 2.95	\$ 1.95	\$ 1.50	\$ 1.00	1-3 Days
8x10	\$ 6.95	\$ 4.95	\$ 3.95	\$ 2.95	\$ 1.95	\$ 1.50	1-3 Days
8x12	\$ 7.95	\$ 5.95	\$ 3.95	\$ 2.95	\$ 1.95	\$ 1.50	1-3 Days
10x15	\$ 16.95	\$ 10.95	\$ 7.95	\$ 6.50	\$ 5.50	\$ 4.50	1-3 Days
11x14	\$ 16.95	\$ 10.95	\$ 7.95	\$ 6.50	\$ 5.50	\$ 4.50	1-3 Days
12x18	\$ 20.95	\$ 13.95	\$ 10.95	\$ 6.95	\$ 6.00	\$ 5.00	1-3 Days

See 12x Panoramic Prints on page 10 and up to 40x Wide Format Prints on page 11.

## From 120 Negatives

Size	1st	2-9	10-49	50-99	100-499	500+	Turnaround
5x7	\$ 5.95	\$ 2.95	\$ 1.95	\$ 1.50	\$ 1.00	\$ 0.75	1-3 Days
8x10	\$ 10.95	\$ 4.95	\$ 3.95	\$ 2.95	\$ 1.95	\$ 1.50	1-3 Days
11x14	\$ 20.95	\$ 10.95	\$ 7.95	\$ 6.50	\$ 5.50	\$ 4.50	1-3 Days
12x18	\$ 22.95	\$ 13.95	\$ 10.95	\$ 6.95	\$ 6.00	\$ 5.00	1-3 Days

See Panoramic Prints on page 10 and up to 40x Wide Format Prints on page 11

## From 4x5 and larger negatives

This is a premium quality print on archival photographic paper. Cropping is available. Finish is glossy or matte. The digital image is also provided on CD-R .

4x5 .....	\$ 15.95	10x15 .....	\$ 30.95
5x7 .....	\$ 19.95	11x14 .....	\$ 30.95
8x10.....	\$ 22.95	12x18 .....	\$ 34.95

The quantity price breaks shown above apply for multiple prints from the same original. See page 11 for Wide Format Prints

# SPECIAL SERVICES

## Passport Photos

**Sorry we are currently not shooting passport photos.**

We recommend that you get passport photos at:

Tuttle Camera  
5467 E Carson Street  
Long Beach CA 90808  
Ph (562) 354-6080

## Print Borders

In addition to our standard borderless prints and plain white borders, we offer a variety of unique borders for any size color prints. Your image is not cropped, but rather slightly reduced in size to accommodate the border width. This service is available from both color film and digital images.

There is a set-up charge of \$3.00 per each print size for your entire order.

Ask about custom border widths and logo or text overlays.



# SLIDE FILM PROCESSING



## Ektachrome, Fujichrome and other E-6 process slide films

Slide mounts are no longer manufactured worldwide, hence not available.

		<u>Turnaround</u>
35mm - 24 exposure processing, unmounted and sleeved. . . . .	\$ 14.95	Variable
35mm - 36 exposure processing, unmounted and sleeved. . . . .	\$ 17.95	Variable
120 film, unmounted and sleeved . . . . .	\$ 18.95	Variable
220 film, unmounted and sleeved . . . . .	\$ 21.95	Variable

*\*Variable: Turnaround time can vary from 1-2 days depending on the workload.*

## E-6 processing with prints

35mm 36 exposure E6 processing plus 4x6 prints . . . . .	\$17.95 plus \$0.89 per print.
120 film E6 processing plus 4x4 or 4x6 prints . . . . .	\$18.95 plus \$1.79 per print.
120 film E6 processing plus 5x5 or 5x7 prints . . . . .	\$18.95 plus \$2.75 per print.

## E-6 Push processing and Cross processing

Push processing, per stop or fraction thereof . . . . .	\$ 3.00	Overnight
35mm film cross process (C-41 film processed in E-6). . . . .	\$ 17.95	Variable
120 film cross process (C-41 film processed in E-6). . . . .	\$ 18.95	Variable

*We have self mounts for sale if you want to cut and insert 35mm slide film into mounts.*

## Self Mounts

We carry Hama plastic self mounts for easy mounting of your 35mm slide film. Simply cut the film to a single frame and slip it into the mount. Just mount the frames you want.

Hama slide mounts sold individually.....	\$ 0.59 each
38 Hama mounts plus a plastic slide box to hold 38 mounted slides.....	\$ 20.00
Bulk pack box of 100 Hama slide mounts .....	\$ 40.00

## Discontinued Processes

The following photographic film processes are **no longer available**:

Slide Film Processing:	Kodachrome K-14, or Agfa Scala Black & White
Color Print Film Processing:	Kodak Color Disc Film, ECN and ECN-2, Triple Print, or C-22 Color (we can process C-22 and Triple Print as B&W film)
B&W Film Processing:	InfraRed film. Scala film, Agfa Copex Rapid, Litho film or Recording Film 2475.

# COLOR PRINTS & ENLARGEMENTS FROM SLIDES & TRANSPARENCIES

## Premium quality prints from 35mm slides & 120 transparencies

Direct positive to positive prints are digitally printed on our state of the art digital printer. This provides the best color reproduction possible, with little or no increase in contrast. Finish is glossy or matte. Cropping is available. All work is done onsite in 1-3 days.

*Quantity price break from the same original*

<i>Print Size</i>	<i>1st 35mm</i>	<i>1st 120</i>	<i>2-9</i>	<i>10-49</i>	<i>50-99</i>	<i>100-499</i>	<i>500+</i>
2x, 3x, 4x5, 4x6, 5x5	\$ 3.95 . . . . .	\$ 4.95 . . . . .	\$ 1.49 . . . . .	\$ 0.79 . . . . .	\$0.39 . . . . .	\$0.34 . . . . .	\$0.30
6x6, 5x7 or 5x8	\$ 5.95 . . . . .	\$ 6.95 . . . . .	\$ 2.95 . . . . .	\$ 1.95 . . . . .	\$1.50 . . . . .	\$1.00 . . . . .	\$0.75
6x9	\$ 7.95 . . . . .	\$ 8.95 . . . . .	\$ 3.95 . . . . .	\$ 2.95 . . . . .	\$1.95 . . . . .	\$1.50 . . . . .	\$1.00
8x8, 8x10 or 7x10 f.f.	\$ 9.95 . . . . .	\$ 11.95 . . . . .	\$ 4.95 . . . . .	\$ 3.95 . . . . .	\$2.95 . . . . .	\$1.95 . . . . .	\$1.50
8x12	\$ 11.95 . . . . .	\$ 12.95 . . . . .	\$ 4.95 . . . . .	\$ 3.95 . . . . .	\$2.95 . . . . .	\$1.95 . . . . .	\$1.50
10x15	\$ 16.95 . . . . .	\$ 18.95 . . . . .	\$10.95 . . . . .	\$ 7.95 . . . . .	\$6.50 . . . . .	\$5.50 . . . . .	\$4.50
11x14	\$ 16.95 . . . . .	\$ 18.95 . . . . .	\$10.95 . . . . .	\$ 7.95 . . . . .	\$6.50 . . . . .	\$5.50 . . . . .	\$4.50
12x18	\$ 20.95 . . . . .	\$ 22.95 . . . . .	\$13.95 . . . . .	\$ 7.95 . . . . .	\$6.50 . . . . .	\$5.50 . . . . .	\$4.50

See page 11 for Wide Format Prints

## Prints from 4x5 and larger transparencies

This is a premium quality print on archival photographic paper. Cropping is available. Finish is glossy or matte. The digital image is also provided on CD-R .

4x5 . . . . .	\$ 15.95	10x15 . . . . .	\$ 30.95
5x7 . . . . .	\$ 19.95	11x14 . . . . .	\$ 30.95
8x10 . . . . .	\$ 22.95	12x18 . . . . .	\$ 34.95

The quantity price breaks shown above apply for multiple prints from the same original.  
See page 11 for Wide Format Prints

# TRUE BLACK & WHITE FILM

## DIGITAL AND FILM

We print TRUE Black & White prints from both film and digital files on ILFORD Galerie Digital B&W paper. These prints are not on color paper and are not inkjet prints, they are true Black & White photographs.

### Film Developing only (film cut or sleeved, no prints)

**1 Day**

35 mm, 110, 126 film .....	\$ 8.95	
120 medium format (6x4.5, 6x6, 6x7 & 6x9) .....	\$ 10.95	
220 medium format (6x4.5, 6x6, 6x7 & 6x9) .....	\$ 13.95	
Vintage B&W films: 127 and 620 .....	\$ 10.95	
Vintage B&W films: 116 and 616 .....	\$ 15.95	
Push or pull processing .....	\$ 2.00	per stop

### True B&W prints at the time of film developing

**1-3 Days**

From 35mm film:	3½x5 .....	\$ 0.99	
	4x6 .....	\$ 1.19	
	5x7 .....	\$ 3.95	
From 120 / 220 / 620	3.75x5 from 6x4.5 neg .....	\$ 2.95	
	5x5 from 6x6 neg .....	\$ 2.95	
	4x5 or 5x6 from 6x7 neg .....	\$ 2.95	
	5x7 from 6x4.5 or 6x6 neg & 6x7 from 6x7 neg ..	\$ 3.95	
From 110,126 & 127 film	3½x5 to 5x5 .....	\$ 4.00	1-5 Days

*Second set of prints at time of developing is 1/2 price. Choice of borderless or white borders in pearl or glossy finish.*

### Digital or Film: True B&W Reprints and Enlargements

**1-3 Days**

We print on Ilford Galerie Digital glossy and pearl B&W paper. Sepia tone is available on color paper.

*Quantity price breaks from the same negative*

From	Print Size	1-24	25-99	100+	Turnaround
110/126/127	3½x5, 4x6 and 5x5	\$ 4.00			1-5 Days
35mm	2-Wallets, 3½x5 and 4x6	\$ 2.39	\$ 1.25	\$ 0.80	
Digital	2-Wallets, 3½x5, 4x5 and 4x6	\$ 2.39	\$ 1.25	\$ 0.80	
120/220/620	3½x5, 4x5, 5x5 and 5x6	\$ 3.49	\$ 1.25	\$ 0.80	
Any	4x8 and 4½x6	\$ 3.49	\$ 1.25	\$ 0.80	
Any	4x10 and 4x12	\$ 6.95	\$ 2.95	\$ 1.00	
Any	5x7, 5x7½, 6x6, 6x8 and 6x9	\$ 7.95	\$ 3.95	\$ 1.50	
Any	8x10 and 6x15	\$ 14.95	\$ 5.95	\$ 3.95	
Any	8x12, 8½x11, and 9x12	\$ 16.95	\$ 5.95	\$ 3.95	
Any	10x10	\$ 18.95	\$ 6.95	\$ 4.50	
Any	10x12	\$ 19.95	\$ 8.95	\$ 5.50	
Any	10x15	\$ 24.95	\$ 10.95	\$ 6.50	

Prints from 4x5 or larger negatives same as color prints. See page 30.

# CUSTOM FRAMING

## Traditional Custom Framing

We use quality materials and standard framing procedures that will best display your photograph or artwork. We offer a large selection of wood and metal mouldings, quality acid-free matboards and a selection of glazing materials. We can frame photographs, artwork, certificates and collectable objects. All work is done on the premises with a 7-10 day turnaround.

Wood & metal mouldings range from \$10- \$25 per foot

Acid free matboards range from 95¢ - \$2.00 per United Inch (Width + Height)

Standard framing glass is 60¢ per United Inch

Example: a typical 11x14 print with a \$13 moulding and a double 3” mat is about \$175.00

The fitting (assembly labor) charge is waived when you purchase a moulding.

Canvas stretching is \$1.25-\$1.75 per United Inch (Height + Width) for standard and gallery design depending on your choice of stretcher bars. See the Wide Format page 11 for details.

## Conservation Framing

Conservation framing utilizes materials and techniques that will best protect and preserve the art. All methods are completely reversible without leaving any impressions or residue on the artwork. We offer 100% cotton rag matboards, 98% UV protection glass, museum glass and conservation mounting and fitting procedures that do not harm the original artwork. All work is done on the premises with a 7-10 day turnaround.

100% cotton matboards range from \$1.25 - \$3.00 per United Inch (Width + Height)

Conservation or museum glass is \$1.00 - \$3.50 per United Inch

Example: a conservation framed 11x14 print with the same moulding as above is about \$250.00



# PRINT MOUNTING

## Hot & Cold Mounting, Laminating and Encapsulating

We can mount your print, enlargement or poster on a variety of surfaces and also apply a protective glossy, satin or matte over-laminate film. Turnaround time is 1-3 days depending on the size of the job.

### Description of materials used

Cardboard:	Durable and inexpensive; use in a frame behind glass. Trimable to any size up to 16x20. Available in either <b>black</b> or <b>white</b> core.
Foam-Cor (3/16"):	Sturdy, non-wrinkling and very lightweight; use with or without a frame, edges are unfinished. Trimable to any size.
Gatorfoam (3/16"):	Sturdy, non-warping and lightweight. Edges are black and unfinished but look nice. Trimable to any size. Mounting blocks can be added for \$4.50 per print
Styrene (0.08):	Extremely stable and durable. Good for exterior signage. 16x20 max size.
Gatorboard (3/4"):	This is the premium mounting board; sturdy, non-warping, lightweight and has finished edges. Standard sizes only, no trimming possible. Black edges.
Mural Mount* (1 1/2"):	Same as Gatorboard but 1 1/2" thick. Only available in sizes 11" wide and larger and may require special order of 4-6 weeks. Custom sizes available.
Museum Bamboo:	Wood wall mount 3/4" thick, and table blocks 1 1/2" thick. Exceptional quality.
Lamination:	A 5 mil heat sealed glossy, satin or matte protective film.
Encapsulation:	A 3 mil heat sealed, glossy lamination applied to both sides of the print, to block damaging UV rays and protect it against fingerprints, dirt, and moisture.

Size	Card Board	FoamCor	Styrene	Gator Foam	Stand-Out GatorBoard*	Mural* Mount	Museum 3/4" 1 1/2"	Glossy Lam/Encap	Matte/Satin Laminate
3x5	\$4	\$5	\$7	\$6	n/a	n/a	n/a	\$4	\$5
4x6	\$4	\$5	\$7	\$6	n/a	n/a	\$35 \$45	\$5	\$6
5x7	\$4	\$6	\$9	\$8	\$12	n/a	\$45 \$55	\$6	\$7
8x10	\$5	\$11	\$11	\$15	\$18	\$30	\$59 \$79	\$8	\$9
8x12	\$5	\$12	\$12	\$16	\$19	n/a	\$69 \$89	\$8	\$9
10x15	\$6	\$13	\$14	\$18	\$22	n/a	n/a	\$11	\$13
11x14	\$6	\$13	\$14	\$18	\$22	\$45	\$110 \$145	\$11	\$13
12x18	\$9	\$15	\$18	\$20	\$29	\$55	sp	\$12	\$14
16x20	\$12	\$19	\$35	\$30	\$45	\$75	\$199 sp	\$15	\$18
16/18x24	\$12	\$22	n/a	\$32	\$50	\$85	\$199 sp	\$20	\$25
20x30	n/a	\$25	n/a	\$35	\$60	\$95	n/a	\$25	\$30
24x36	n/a	\$30	n/a	\$45	\$120	\$155	n/a	\$30	\$36
24x48	n/a	\$35	n/a	\$55	\$170*	\$200*	n/a	\$40	\$48
30x40	n/a	\$45	n/a	\$70	\$170	\$200	n/a	\$40	\$48
36x48	n/a	\$55	n/a	n/a	\$225*	\$275*	n/a	\$60	\$72
40x60	n/a	\$70	n/a	n/a	\$350*	\$400*	n/a	\$83	\$100
40x96	n/a	\$90	n/a	n/a	n/a	n/a	n/a	\$125	\$150

*Note: For special cut sizes in Cardboard, Foam-cor, or Gatorfoam, price as next size up. Custom sizes\* in GatorBoard or Mural Mounts are available by special order (sp). Mounting blocks can be added for \$ 5.00 .*