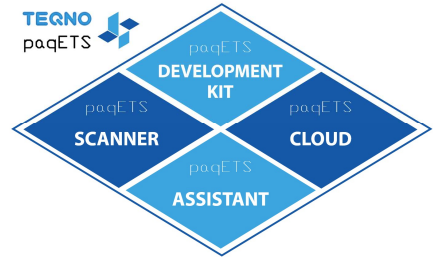




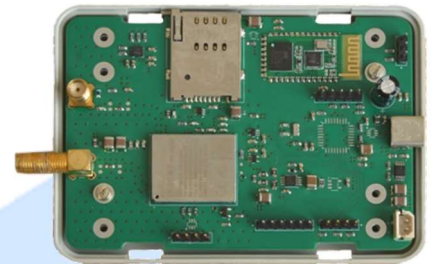
## IOT DEVELOPMENT KIT

*Plug-and-play cellular IoT LPWA development kit  
with multiple connectivity options for rapid  
prototyping or full-stack application development*



## KEY FEATURES

- LPWA modem with NB-IoT, LTE-M multiband support and GPRS fallback
- 3GPP Release 14, firmware upgradeable to Rel15
- Battery or USB powered, built-in solar cell battery charger
- GNSS receiver
- 3-axis low power accelerometer
- Connectivity to third-party devices/sensors: RS485, Bluetooth
- Range of built-in I/Os: discrete inputs/outputs, pulse counter, analog inputs
- Cortex M4 microcontroller and BSP for custom application development
- Seamless integration with Amazon AWS, Azure IoT and other IoT cloud platforms
- Protocols: TCP/UDP, HTTP, NIDD, CoAP, MQTT, LwM2M, DLMS/COSEM
- Data communication security: TLS/DTLS, HTTPS, DoNAS/NIDD
- USB drivers: MS Windows, Linux, Android



## TECHNICAL SPECIFICATIONS

### Supported LTE Bands

CAT-M: B1/B2/B3/B4/B5/B8/B12/B13/B14/B18/B19/B20/B25/B26/B27/B28/B66/B85  
CAT-NB: B1/B2/B3/B4/B5/B8/B12/B13/B18/B19/B20/B25/B26/B28/B66/B71/B85  
GSM/EGPRS: 850/900/1800/1900MHz bands

### RF Power

LTE Class 5(20dB), LTE Class 3(23dB), Rel14 14dB

### Data throughput (peak)

CAT-M: Uplink: 1119Kbps Downlink: 589Kbps  
CAT-NB: Uplink: 150Kbps Downlink: 136Kbps  
GPRS: Uplink: 85.6Kbps, Downlink: 107Kbps

### Power Consumption

Deep sleep mode: <5µA  
Sleep mode (eDRX): <1.3mA  
Idle mode (eDRX): <15mA  
Active Tx mode (peak): <220mA