

Snoqualmie Valley

MOBILITYCOALITION

*Connecting communities to improve public transportation for
Snoqualmie Valley*

August 12th, 2022

SVMC Welcomes Everyone

The Snoqualmie Valley Mobility Coalition welcomes and values all communities. We value, respect, and honor the identity and experience of all members.

We encourage everyone to participate, regardless of ability. We are committed to listening, learning, and improving in this process.

We acknowledge that the work we do takes place on the traditional land of the Snoqualmie Tribe and Coast Salish among others as the first people of this valley. We honor with gratitude the land itself and past, present, and future of these tribes.

Visit: <http://snoqualmientribe.us/snoqualmie-tribe-ancestral-lands-movement/>

Agenda

- Introductions and Announcements
- SVMC Project Updates
- Presentation: Mountains to Sound Greenway Trust
- Presentation: Trailhead Direct
- Roundtable/Next Steps

Introductions

Name and Pronouns

Organization, Title, Contact Info

What is one thing you consider yourself to be very good at? What is your secret superpower?

Announcements

- ☐ Hiring for Snoqualmie Valley Mobility Coordinator position
- ☐ Free Youth Transit Pass
- ☐ Partner announcements?

SVMC Project Updates: FY23 Work Plan

- **Priority 1:** Advocate for coordinated regional and local policies/codes that support transportation services and infrastructure.
- **Priority 2:** Advocate for a mobility system in the Valley that accommodates non-drivers.
- **Priority 3:** Continue to partner with Snoqualmie Valley jurisdictions, organizations, and businesses to share and distribute information on the existing mobility options and resources available to residents, employees, employers, and visitors.

SVMC Project Updates: FY23 Work Plan

Project 1: Advocate for Non-drivers in Snoqualmie Valley – July 2022 to June 2023

Create and distribute a one-pager document outlining the top mobility priorities in the Snoqualmie Valley. Continue to identify and advocate for the mobility needs of non-drivers to create a complete mobility system.

SVMC Project Updates: FY23 Work Plan

Project 2: Comprehensive Plan Update Recommendations – July 2022 to June 2023

Continue to facilitate SVMC Task Force, focusing on coalition project and priorities. In collaboration, develop strategies and timelines to engage with Valley jurisdictions to recommend updates to the 2024 Comprehensive Plan updates. Review Transportation Elements to assure goals and policies promote affordable, accessible, reliable, and safe transportation options and infrastructure.

Coordinated Awareness Campaign Evaluation Report

- Project goal: Increase transportation knowledge and ridership by creating a coordinated awareness campaign for the Snoqualmie Valley to inform residents of their transportation options

Overview

- Project Overview
- Lessons Learned
- Successes
- Next Steps
- Toolkit



Target Demographics

- People with disabilities
- Older adults
- Youth
- People with low incomes
- Healthcare travel needs
- General public

Deliverables

- City-specific transportation pages on city websites
- Targeted social media content for Facebook, Twitter, and Instagram
- Press releases
- Newsletter content for city mailers/utility bills
- Informational flyers for mailing, digital, and physical distribution

Evaluation Report Highlights

- Importance of partnerships and coordinated efforts
- Importance of multi-pronged approaches and targeted demographic marketing
- Simplify!
- Lead to better understanding of transportation gaps and the development of transportation priority recommendations for the Valley

SVMC Top Priorities

- ✓ Full Weekend Service
- ✓ Central Valley Connection to Redmond
- ✓ South King County Commuter Connection
- ✓ Door-to-Door/Feeder-to-Fixed Route Services

SVMC Project Updates

To get involved with these projects contact Bree to join SVMC Taskforce which meets bi-monthly:

- **Friday, September 9th, 2022 from 10:30am-12:00pm on Zoom.**



**Mountains to Sound
Greenway Trust**
*Caroline Villanova,
Community & Partnership
Manager*



Caroline Villanova

Community & Partnerships Manager

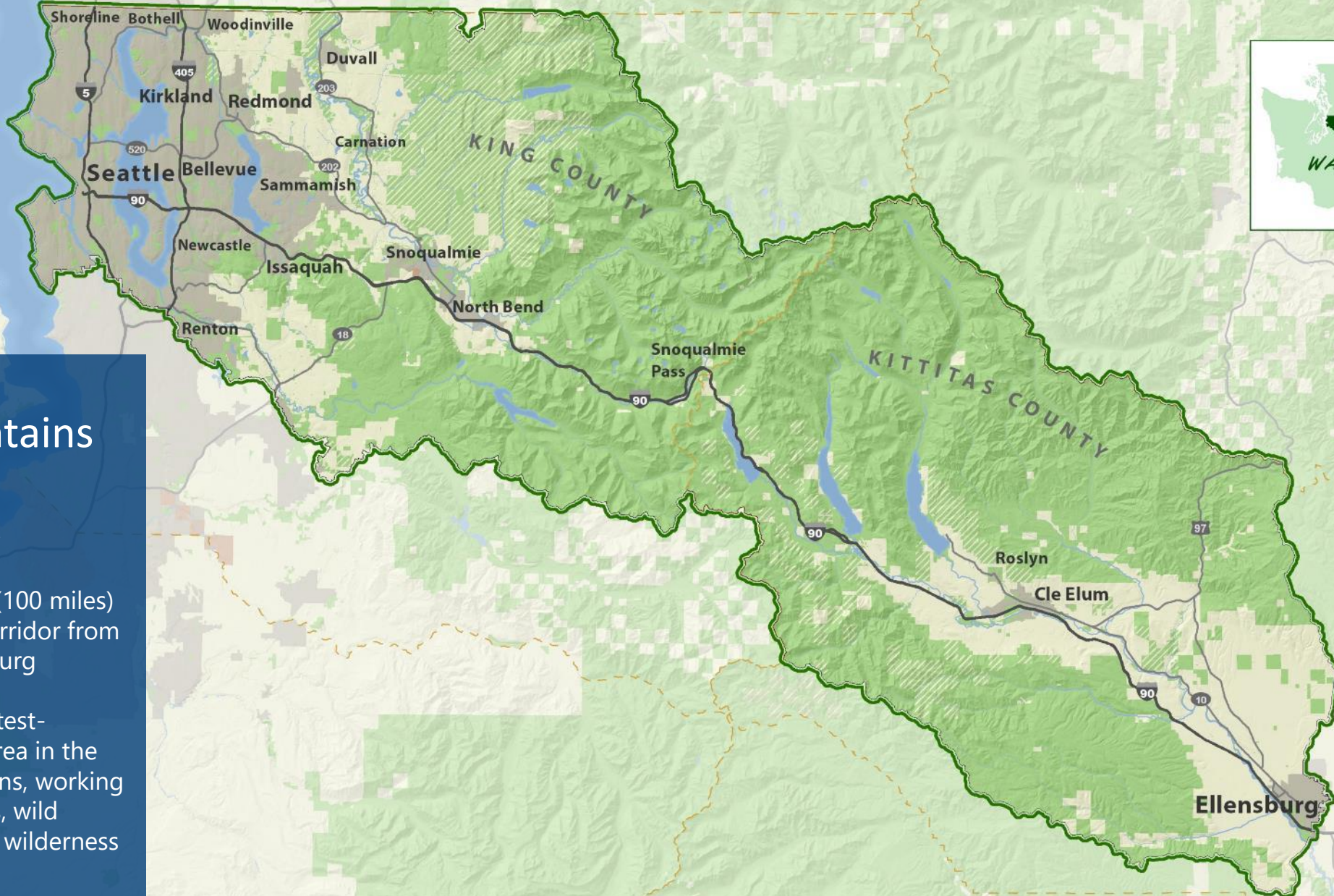
Likes: Eating ice cream after a long bike ride and borrowing other people's dogs.

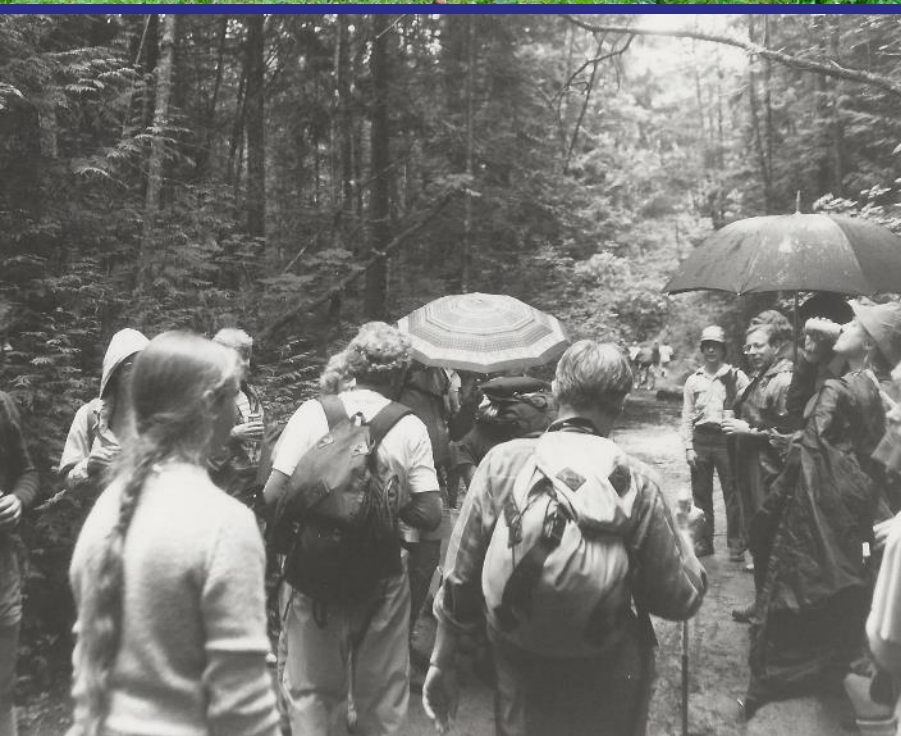


The Mountains to Sound Greenway

1.5 million acres (100 miles)
along the I-90 corridor from
Seattle to Ellensburg

Encompasses fastest-
growing metro area in the
nation, small towns, working
farms and forests, wild
rivers, and alpine wilderness





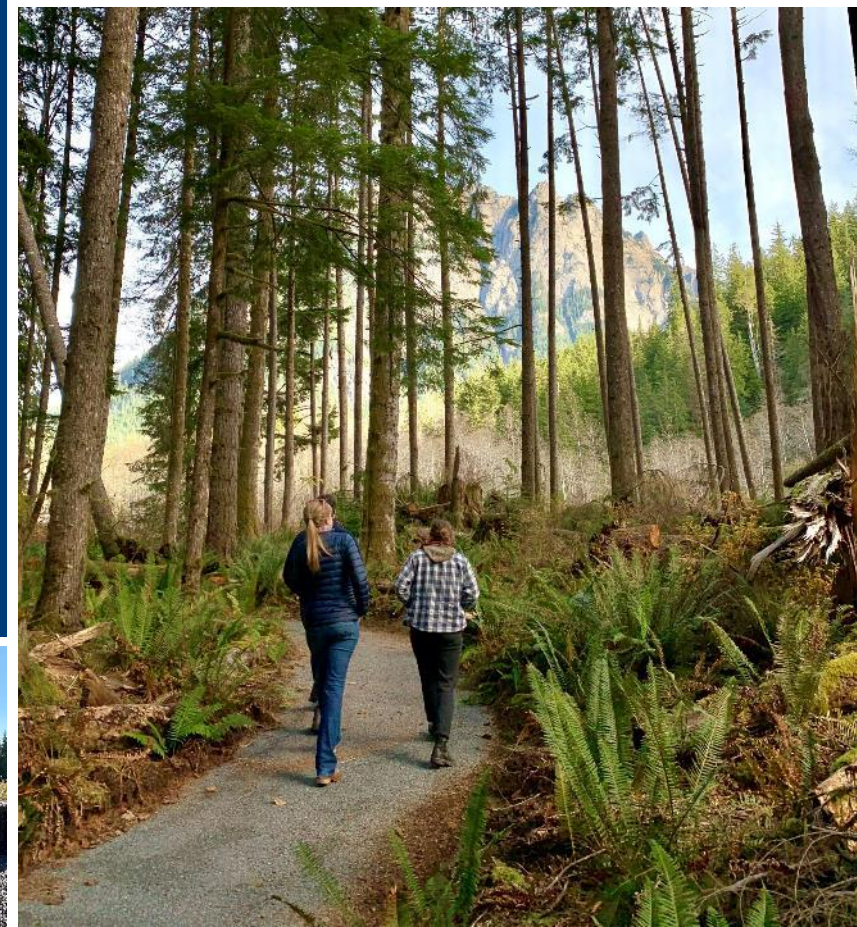
The Mountains to Sound Greenway Trust





The Mountains to Sound Greenway National Heritage Area

Est. March 12, 2019

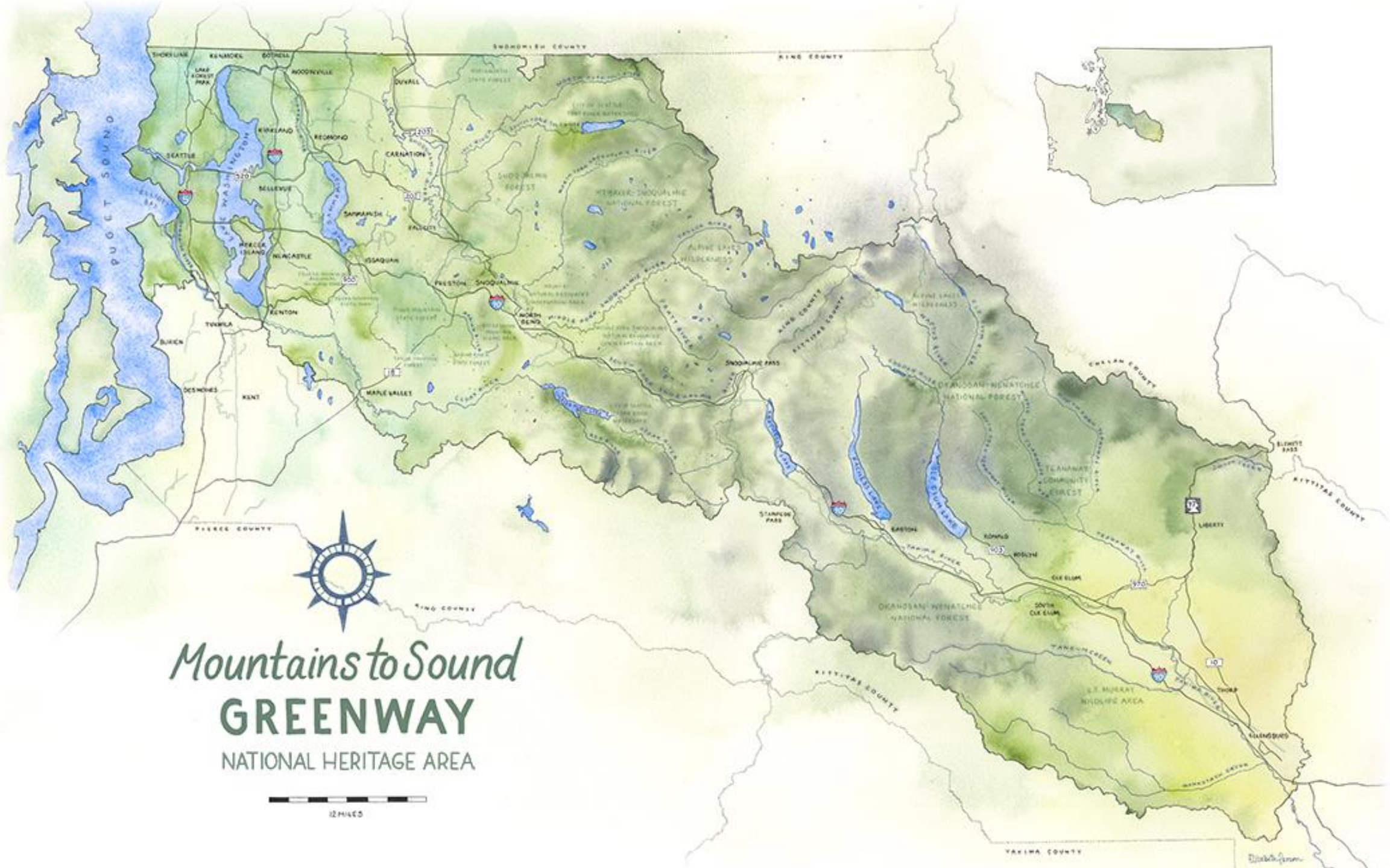


Obligations to Tribes as a National Heritage Area

- The NHA management plan was developed in consultation with five federally recognized Tribes, as reflected in the plan
- Consultation moved at the pace of relationship building with support of Tribal Liaison from the Whitener Group, LLC.
- The NHA plan ensures consistency with trust responsibilities and treaty rights
- The NHA plan does not grant or diminish hunting, fishing or gathering treaty rights
- There is no change to co-management authorities

Five Tribes consulted with throughout NHA management planning process:





Mountains to Sound
GREENWAY
NATIONAL HERITAGE AREA

0 1 2 3 4 5 6 7 8 9 10 11 12 MILES



Restoring Forests with Native Trees



Removing Noxious Weeds



Improving River Habitat for
Endangered Salmon

Empowering the Next Generation of Environmental Changemakers

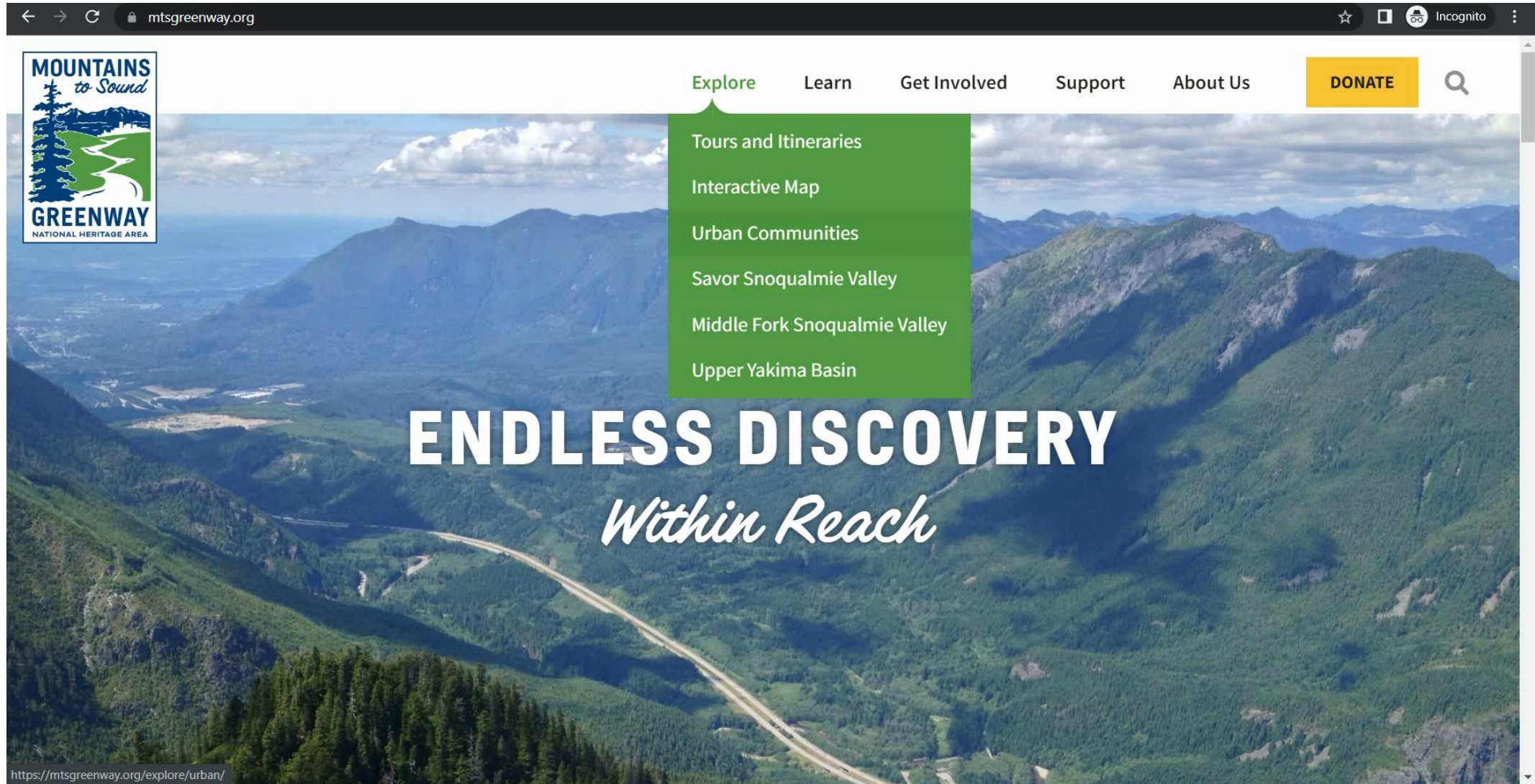




Making Recreation Safe and Sustainable



Our work in the Snoqualmie River Valley



Savor Snoqualmie Valley Initiative

- Lead coalitions of local leaders on outdoor recreation & heritage
- Elevate & highlight activities of the valley through communication channels (i.e. museums, heritage stories, U-pick)
- Lead and support active habitat restoration and sustainable recreation in the valley

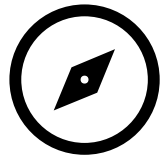
Savor
SNOQUALMIE
VALLEY



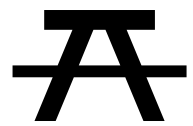
Getting around in the Mountains to Sound Greenway National Heritage Area



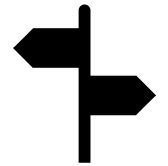
Transit resources



Local tours, i.e. walking tours



Connection points of public transit and nature



Wayfinding on regional trail



Highlighting wheelchair-friendly adventures



Ways to Deepen Engagement



- Subject matter expert for blogs
- Quarterly Savor Snoqualmie e-newsletter to promote local happenings
- Social media



Other ways
to get
involved!

Explore

Greenway Interactive Map

Donate

mtsgreenway.org/donate

Stay in Touch

E-news, Instagram,
Facebook, Twitter, Volunteer

A scenic mountain landscape with a winding road and purple flowers in the foreground. The background shows a steep, rocky mountain slope with a narrow, light-colored path or road winding through it. The foreground is filled with vibrant purple flowers, likely bellflowers, growing from a rocky surface. The overall scene is bright and clear, suggesting a sunny day.

Caroline Villanova
caroline.villanova@mtsgreenway.org

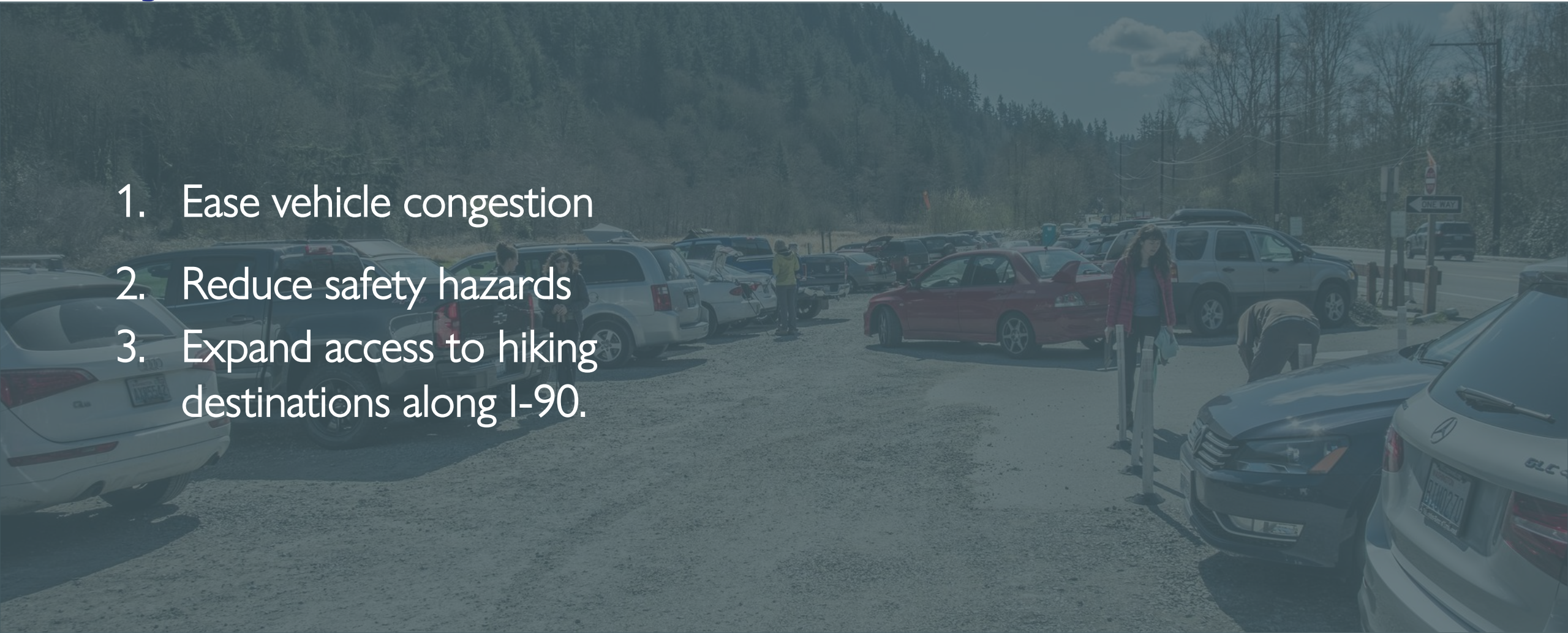
Trailhead Direct

Allison Miskell

Transportation Planner | King County Metro

Project Goals

1. Ease vehicle congestion
2. Reduce safety hazards
3. Expand access to hiking destinations along I-90.



Service during COVID

2020

- All services suspended
- Safety concerns
- Extremely limited operational capacity

2021

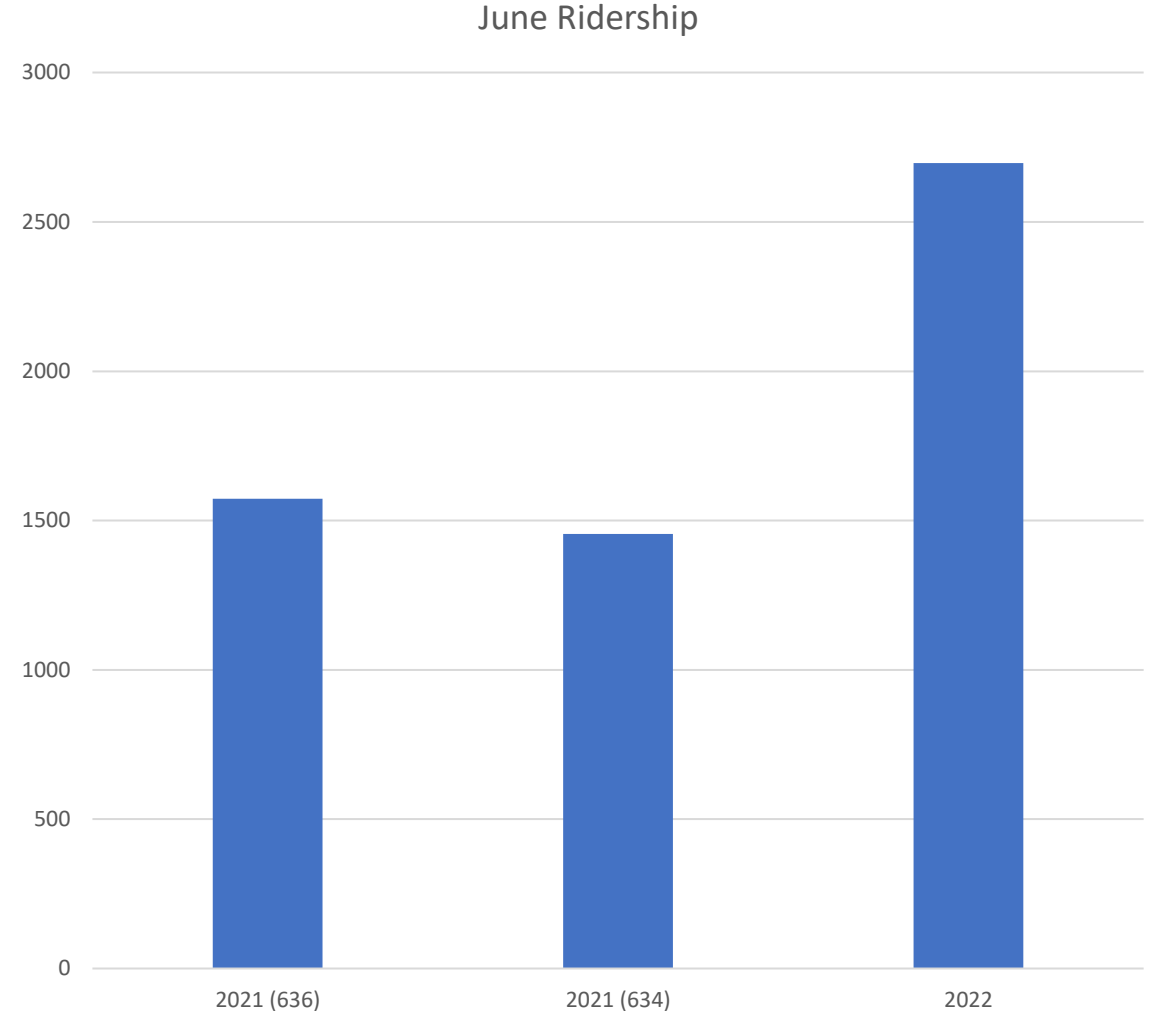
- Operate just the sustained services for 2021
 - Issaquah Alps
 - Mount Si
- Increase frequency on Mt Si/636 to offset reduced capacity on coaches
- Saw regular service cancellations due to operator shortage

2022

- Refocus on only Mount Si based on limited operator availability
- Coaches were no longer at reduced capacity limits, returned to 2019 frequency
- Reduce service cancellations

2022 season performance

- Caveat:
 - Ridership is manually logged by operators, so is more prone to errors than other Metro services
- Ridership on Mt. Si is double 2021 ridership
- Higher ridership than even COMBINED Mt. Si and Issaquah Alps
- Lower trip cancellations



Questions?

- **King County Metro:** Ryan Miller, Transportation Planner, Service Planning, 206-477-5044, Ryan.Miller@KingCounty.gov
- **King County Parks:** Ryan Dotson, Business Development and Partnerships Manager, King County Parks, 206-330-5459, Ryan.Dotson@KingCounty.gov

Roundtable/Next Steps





Snoqualmie Valley

MOBILITYCOALITION

Next SVMC General Meeting:

❖ Friday, October 14th at 10:30am-
12:00pm, on Zoom.

Next SVMC Task Force Meeting

- ❖ Meet bi-monthly on the 2nd Friday from 10:30am-12:00pm; **September 9th, 2022 is next meeting**
- ❖ Focus on accomplishing coalition projects
- ❖ Contact Bree to participate



Snoqualmie Valley

MOBILITYCOALITION

Thank You!

Bree Boyce

Senior Manager of
Coalitions

(425)-943-6751

bboyce@hopelink.org