

# Welcome to our *Coalition Get to Know* *you*



Introductions:

Name

Pronouns (if comfortable)

Agency



What is your energy level  
like today from a scale of  
1-10?

Who inspired you to  
pursue the career you  
have today?

North King County  
**MOBILITY**COALITION



*A transportation network that allows all people to move freely around North King County and the surrounding area.*

October 27, 2022

# NKCMC Welcomes Everyone

**The North King County Mobility Coalition welcomes and values all communities. We value, respect, and honor the identity and experience of all members.**

We encourage everyone to participate, regardless of ability. We are committed to listening, learning, and improving in this process.

We acknowledge that the work we do takes place on the traditional land of the Coast Salish, Stillaguamish, and Duwamish peoples, among others, as the first people of this land. We honor with gratitude the land itself as well as the past, present, and future of these tribes.

# Agenda



Get to know you



Welcome, Introductions, and Announcements



NKCMC Satisfaction Survey



Shoreline Community Court Reopening



Partnership Mapping



Roundtable/ Next Steps

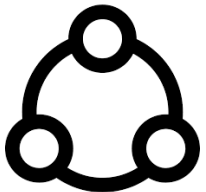
# Introductions



Name



[If comfortable] Pronouns



Organization/affiliation



Contact information

# Announcements

- North King County Mobility Coalition survey now available (more information later in the meeting)
- Tracie Jones the is the new Sno-Valley Mobility Coordinator.
- Hopelink Online Open House
  - Shoreline—**November 4<sup>th</sup>, from 1:00 to 2:30 pm**
  - Sno-Valley—**November 18<sup>th</sup>, from 1:00 to 2:30 pm**

# Mobility Education and Outreach—August 26 - October 26



- 10 GAPS
- Parkwood Elementary for a back-to-school event
- Solid Ground—Santos Place
- Rainer Beach Community Center

Getting Around Puget Sound  
(GAPS)



- 0

Public Transportation  
Orientation (PTO)



- 3 TA Trainings
- Casa Latina
- International Community Health Services
- Mt. Si High School

Travel Ambassador Training  
(TA)

# 2022 North King County Mobility Coalition Satisfaction Survey



- Provide feedback to help us understand what is working and what areas need improvement.
- Should take about 5-10 minutes to complete.
- Survey is anonymous
- Survey Link:  
<https://forms.office.com/r/9LtWUQQFff>





# Take a moment to fill out the survey

- Please take the next 7 minutes to fill out the survey.



00 : 07 : 00



# Shoreline Community Court

Karra Wilson

Court Coordinator



# Community Court Overview

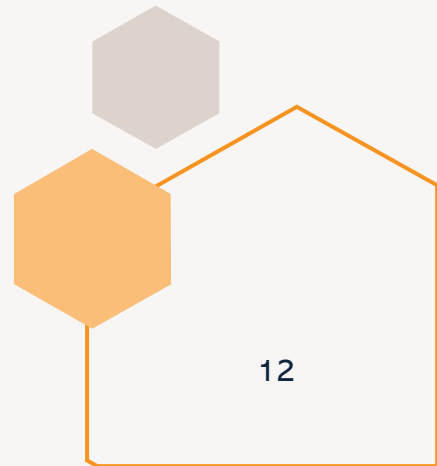
Community Court is a voluntary therapeutic court program that provides rehabilitative and human services to individuals navigating the criminal justice system. Community court reduces recidivism and aims to improve lives by adopting a community-based approach.

Community Court is held in a neutral community-centered location that encourages participant engagement and removes the stigma associated with a traditional courthouse. Community Court seeks to shorten participants' time in the criminal justice system. Upon completion, participants will have their criminal charges dismissed by fulfilling their program requirements.



# Community Court Mission

To use public resources more productively in reducing crime through service provision and increased community engagement and connection.

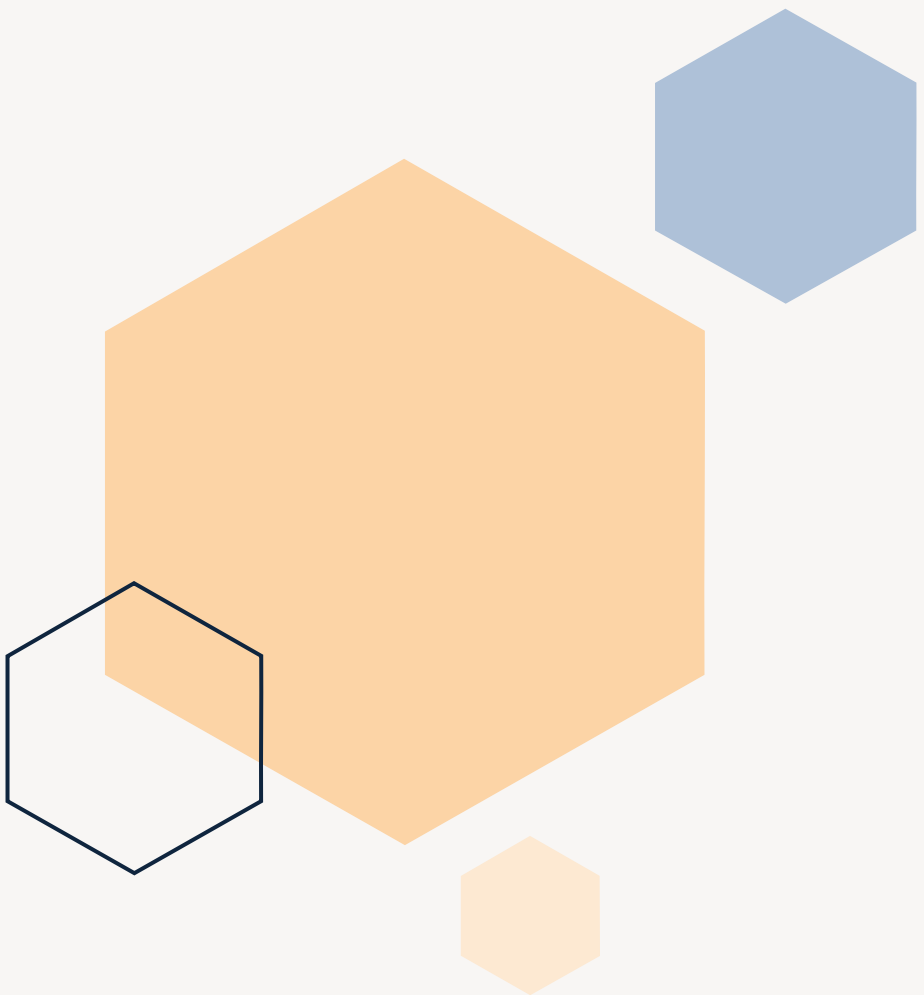


The slide features a decorative graphic on the left side consisting of four hexagons. One is a solid orange hexagon at the top left. Below it is a hexagon containing a photograph of two men shaking hands. To the left of the handshake photo is a white hexagon with a thin grey border. At the bottom left is a solid light blue hexagon.

# Who we serve

Individuals committing low level offenses with various barriers including:

- Homelessness
- Economic instability
- Disabilities
- MH Disorders
- Substance Use Disorders

A decorative graphic on the left side of the slide featuring several hexagons. There is a large orange hexagon in the center, a smaller blue hexagon above it, a white hexagon with a dark blue outline to the left, and a small light orange hexagon below the large one.

**“My experience [at Community Court] has saved my life. Not only am I off the drugs and staying clean by taking the healthy steps to live life clean, I also have been able to get myself back in a healthy structured living situation. I am so blessed to have the honor to be a part of this program.”**

**Community Court Participant**

# The Resource Center is Key



## Co-located with Community Court

- Neutral space
- Offer a sense of safety and reduce stigma associated with Courthouse
- Opportunity to connect with resources directly

## Community Partners offer an array of services

- Healthcare
- Education
- Job Training
- Behavioral health
- Housing
- Lifeline phones
- Transportation

## Open to the Public

Every Tuesday from 1:30 to 3:30 PM at Shoreline City Hall

# Resource Center Grand Re-Opening: December 6



- December 6
- Shoreline City Hall
- Opportunity to reconnect with the Shoreline Community
- Provide tangible resources
- Network Opportunities with providers
- Opportunity to educate and utilize transportation services





# Thank you

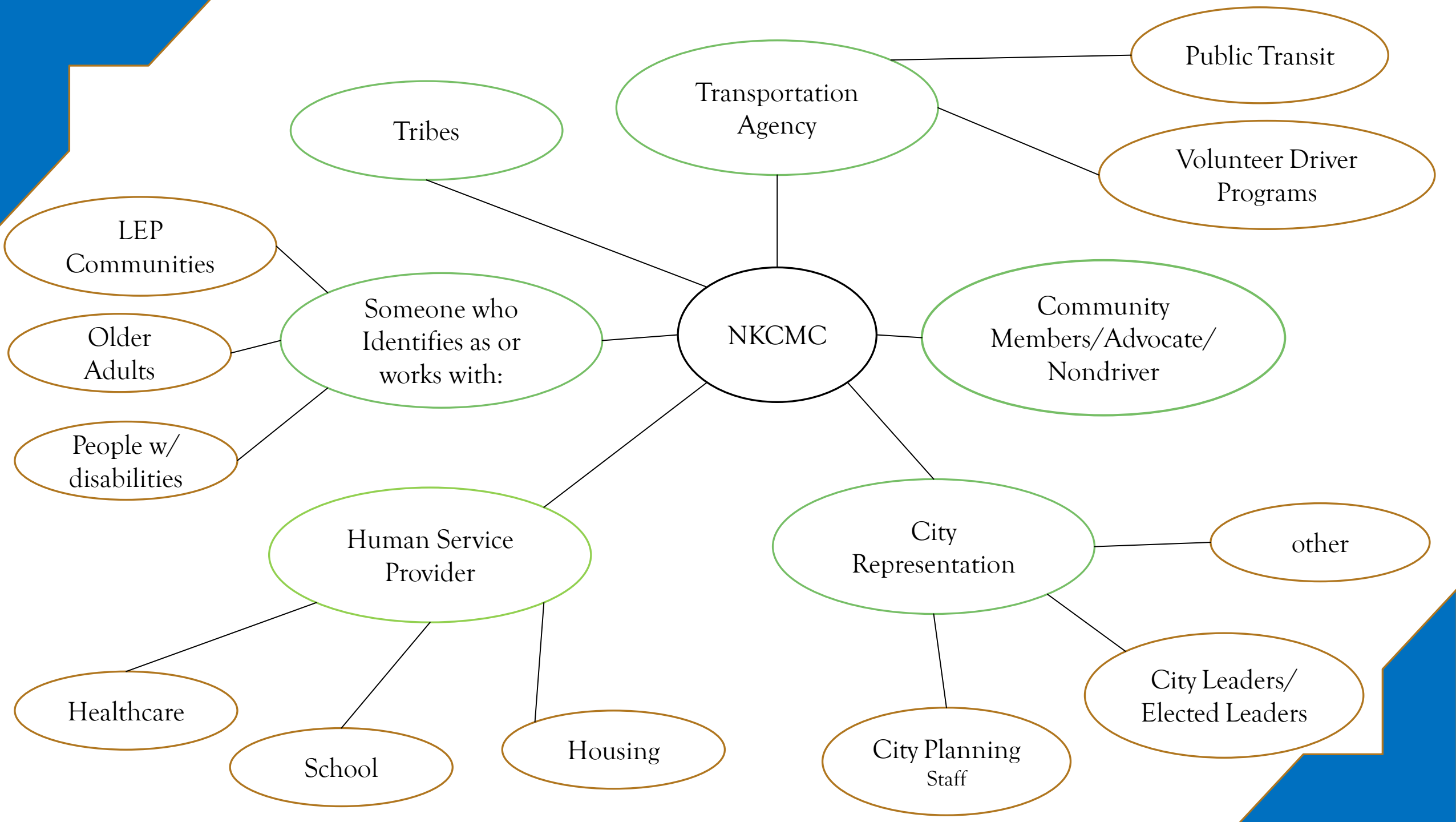
Karra Wilson

[karwilson@kingcounty.gov](mailto:karwilson@kingcounty.gov)

206-652-7825

# Partnership Mapping

North King County Mobility  
Coalition Partner Network



# City Representation

- City Planning Staff
  - City of Shoreline
  - City of Bothell
- City Leaders/Elected Leaders
- other

# Human Service Provider

- Healthcare
  - Public Health
  - International Community Health Services
- School
- Housing
  - King County Housing Authority

# Someone who Identifies as or works with:

- People with disabilities
- Older Adults
  - Lake City Senior Center
- Limited English Proficiency Communities
  - SeaMar
  - Casa Latina

# Tribes

- Muckleshoot Tribal Transit

# Transportation Agency

- Public Transit
- Volunteer driver program



# Community Representation

- Members
- Advocate
  - Aurora Reimagined Coalition
- Nondriver



NKCMC Roundtable

Partner  
Highlights

 **MARY'S PLACE**  
no one's child should sleep outside

 **ICHS** | International  
Community  
HEALTH SERVICES

  
**COMMUNITY**  
**PARTNERSHIPS**

Rainier Beach Community Center Resource Fair

# Roundtable & Next Steps



**Next Meeting:**

**December 15, 2022**

10:15 am – 12:00pm

Zoom

**Please contact with any questions!**

**Julio Perez**

North King County  
Mobility Coordinator

[JPerez@hopelink.org](mailto:JPerez@hopelink.org)

(425) 943-6730

**Bree Boyce**

Senior Manager of  
Coalitions

[BBoyce@hopelink.org](mailto:BBoyce@hopelink.org)

(425) 943-6751