

Transportation Needs of Communities

Note: Please click "**Submit**" after each one, then "**Next Question**" to move forward.

From the list below, which **community do you represent today?**
(Select one or more)



Key Transportation Needs

- Better **cross-county/cross-agency coordination** for a seamless travel experience.
- **Shorter wait times** and **more reliable transfers & return trips**.
- More **frequent** and **expanded transit service**, especially during evenings, weekends, and other days/times needed the most.
- **Context-appropriate transportation options** in areas not well served by fixed-route transit, including rural areas.
- More **rider education opportunities** and **awareness of available transportation services**.
- Improved **access to healthcare, wellness, and other essential services**.
- More **accessible and safer infrastructure**, including more **amenities** at transit stops (seating, lighting, restrooms).
- More **sustainable, long-term funding** is needed to support transportation programs serving priority populations.

Does the list of transportation needs reflect the **key transportation needs** of **your community**?



Missing Needs: What transportation needs are **missing or underrepresented** in the list?

Houseless population

no feedback. The list seems representative of the needs.

Public bathroom access,
Night options for shift workers

"Access" is a large term.
Need more definition about what that looks like and how it would be addressed.

Overall, there is always room for improvement or shift if new items come to light. This is more general than specific items identified.

Context-appropriate transportation options needs a little more defining. Is context the right term?

People with sensory needs, people who are vision impaired

Robust driver training to support accessibility on all services

Missing Needs: What transportation needs are **missing or underrepresented** in the list?

Ensure all people feel safe riding transit

Context-appropriate may be re-termed to "Right-sized transportation options"

More coordination with planners to build more housing and walkable neighborhoods close to transit.

Language accessibility

Easier to use payment systems

Better support for low/extremely-income individuals. Reduced fare ORCA excludes many young adults.

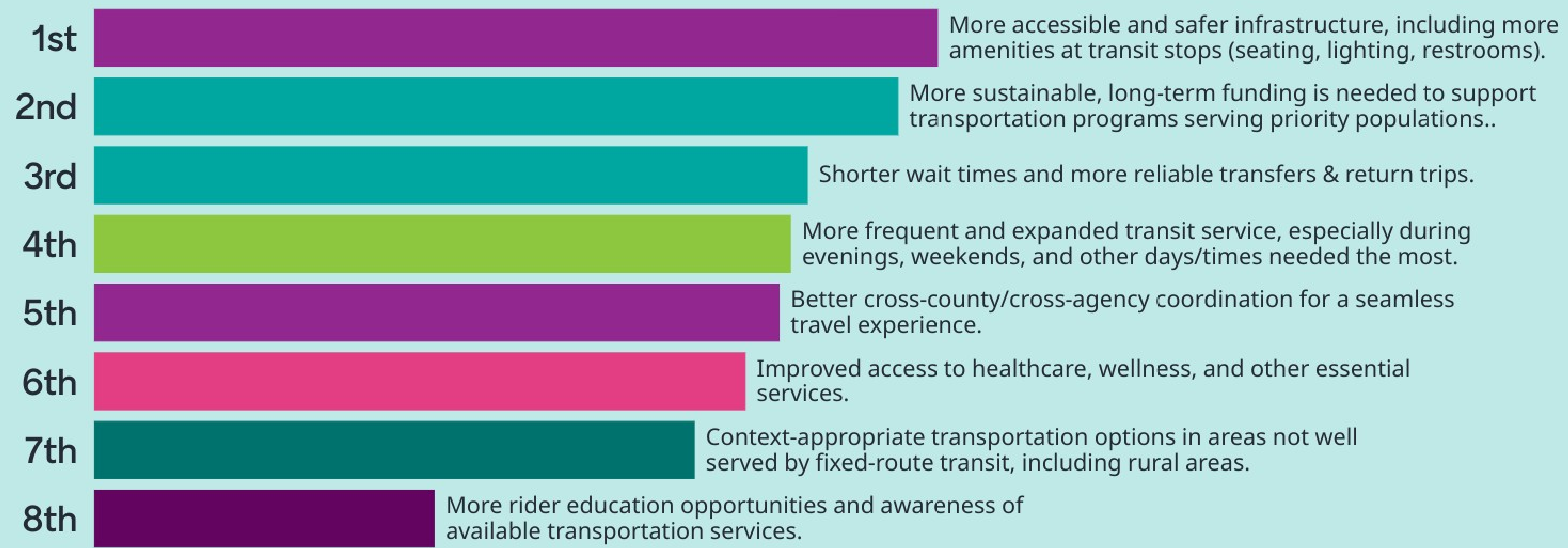
Transportation Priorities

The following questions will help us understand **what success looks like for your community** when transportation needs are met.

Your feedback will shape the **strategies and desired outcomes** in the Coordinated Mobility Plan.

Note: Please click **"Submit"** after each one, then **"Next Question"** to move forward.

Here are the transportation needs heard from communities. Based on the communities you represent, how would you **prioritize** these needs?



If transportation worked perfectly for your community, what would that look and feel like?

safe, affordable,
accessible, reliable and
convenient

Routes that served both the
geographic and time of day
needs for the entire region

More one seat rides
minimizing transfers.

Seamless, affordable,
available as needed,
reliable, safe.

Reliable, punctual, clean

A wide variety of modes

If public transportation
worked perfectly, no one
would need to own a car.

Prefer transit over cars
because it is free, faster,
and safer

If transportation worked perfectly for your community, what would that look and feel like?

Safe, frequent,
consistent, reliable

More times per route-
having less time to wait
for a bus

24 hours, 7 days a week
transportation; shuttles with
deviated routes, free fare, or
a low-cost community-
subsidized fare.

Transit as the default
transportation mode

Safe and reliable
transportation.

Ability for all to travel where
and when they need to go, with
seamless transfers and
reasonable ride times at an
affordable cost, with flexibility
for same-day changes in plans.

All people can move freely in
the Puget Sound area. Cross-
county border transportation is
not a barrier and involves a
one-seat ride. Eligibility
requirements and applications
are better coordinated

More light rail lines through
high density neighborhoods
in Seattle

If transportation worked perfectly for your community, what would that look and feel like?

Everyone would be able to ride at a fare they could afford, and would have transit access that's safe, reliable, accessible, and creates flexibility for getting around our whole region as needed.

Being able to get anywhere in the county and it take no more than 33% longer than driving. People of all abilities/conditions being able to do this due to there being restrooms, accessibility features

More accessible bus stops

Safe and easy to access mobility for all

A world with less Single occupancy vehicles and a focus on pedestrian and transit focused cities. Less polluting, overall community health to promote walk/bike, and having frequent, accessible transit

More Sounder train service for long distance routes.

Carless doesn't mean stuck at home

Transportation that arrives on time, transportation that produces less carbon emissions, maps that are updated, transportation ideally should be free, transportation that allows easy transfers,

If transportation worked perfectly for your community, what would that look and feel like?

Everyone would have access to medical, mental, dental healthcare. Everyone would have access to healthy food choices.

Seamless transportation cross-county for seniors and those with disabilities

There would be multiple modes of safe, healthy transportation options with access to housing that is affordable

Commute times would be faster, reliable and with more space available on buses for people who use wheelchairs and other mobility devices.

Final Thoughts: Do you have any other suggestions or questions you'd like PSRC to consider?

Very interesting info!
Thank you for sharing
this with us.

Elevating the need for
more bathrooms along
transit routes

How can we expand
heavy rail service e.g.
the Sounder trains?

Same Day Transportation
Summit in 2023 Here's the link
to the executive summary.
[https://irp.cdn-
website.com/c86a044e/files/up
loaded/Executive%20Summary
%20Transportation%20Solution
s%20Summit%20\(1\).pdf](https://irp.cdn-website.com/c86a044e/files/uploaded/Executive%20Summary%20Transportation%20Solutions%20Summit%20(1).pdf)

Make transit free in King
County.

Would love to see PSRC
outreach come to the eastside.
There are going to be three
large meetings in the region but
none of them are scheduled for
east King County.

Fare free transit during
smoke and cold weather
activations.

Can charging stations be
added to transit hubs? (for
people using electric
wheelchairs, oxygen tanks,
etc.)

Final Thoughts: Do you have any other suggestions or questions you'd like PSRC to consider?

+1 Wheelchair charging stations!

Information on multiple languages, staff that represents the population they serve, clean transportation, station with bathrooms.

more mechanisms to facilitate travel across county lines, especially in more rural areas in the region. Since PSRC involves all the counties, what can you all propose to make travel easier cross

Thank you!

Your input will help shape the next Coordinated Mobility Plan.

Please email Erin Hogan at ehogan@psrc.org for questions.

