

Snoqualmie Valley

MOBILITYCOALITION

*Connecting communities to improve public transportation for
Snoqualmie Valley*

April 9th, 2021

Agenda

- KCMC Needs Assessment Presentation
- Countywide Planning Policies
- Roundtable
- Next Steps

Introductions

Name

Pronouns

Organization, Title

Announcements

Announcements

Coalition Name
Change:

Snoqualmie
Valley Mobility
Coalition (SVMC)

Announcements

Coordinated Vaccine
Transportation Helpline:

Snoqualmie Valley

MOBILITYCOALITION

Announcements

Partner Announcements
or Updates

Project Updates

- Awareness Campaign Project Update
- Comprehensive Plan Updates

SVMC Task Force Update

- Recommendation to work with update cycles of jurisdictions instead of docket.
- Meet bi-monthly on the 2nd Friday from 10:30am-12:00pm
- Focus on accomplishing coalition projects
- Contact Salwa to participate

King County Mobility Coalition:
**Community Transportation Needs
Assessment + Snoqualmie Valley**

Cassidy Giampetro (she/her), Program
Supervisor of the KCMC

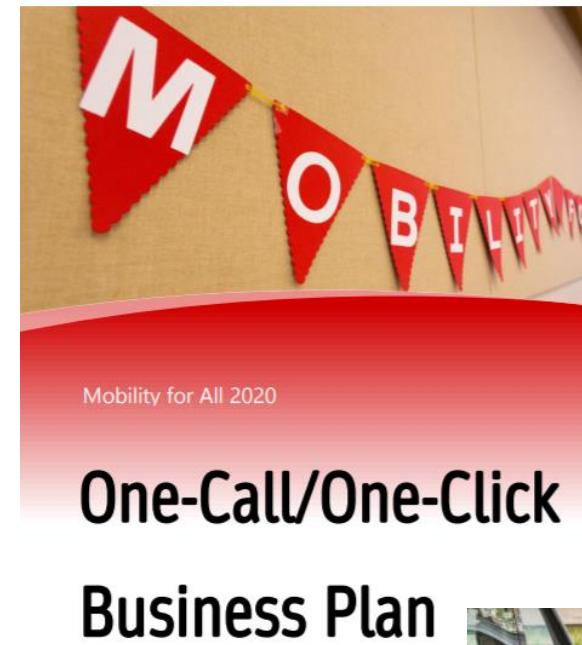
King County Mobility Coalition

- Shared vision and population focus as Snoqualmie Valley Mobility Coalition:
 - Improve the transportation network for transportation-disadvantaged populations, ensuring mobility for all in King County
- Strategic and long-term project planning

King County
MOBILITYCOALITION

King County Mobility Coalition

- Distinct from the subregional Coalition, the KCMC develops need-based programming to serve high-level needs across the county and region



King County
MOBILITYCOALITION
FP Kevin Chambers | FULL PATH LLC



FREE
transportation
to follow-up care

Call to schedule a round-trip ride
or for more information

Call 425.943.6794

- 49 resources reviewed
- Informed by KCMC survey
- 21 total needs
- 7 emerging trends
- COVID-19 call out box
- Each need is labeled by most impacted demographic and location

King County Mobility Coalition Community Transportation Needs Assessment

What SV resources informed our assessment?

- Hospital and health needs assessments
- Immigrant and refugee needs assessments
- Various King County Metro reports
- County-wide documents, like Aging and Disability Services area plan
- SVMC 5-Year Transportation Plan
- Veterans Needs Assessment
- Snoqualmie Valley Community Needs Assessment

Summary of Needs

- What needs define Snoqualmie Valley?
 - Suburban and rural landscape
 - Value for quick and efficient options
 - Services that meet unique needs of those impacted by displacement and isolation
 - Safety: on buses, through bus shelters, benches, etc
 - Understanding on true cost of transportation

Top 5 Identified Needs

1. Better connections to employment and medical centers for rural and suburban populations
2. Better connections within local neighborhoods for rural and suburban populations
3. More culturally competent education and outreach.
4. A reduction in the confusing/overwhelming nature of understanding mobility options, specifically understanding specialized transportation options
5. More off-peak options

What are we doing with this needs assessment?

- Informing the Puget Sound Regional Council's Coordinated Plan
- Using findings to guide our Coalition's project planning
- Meeting with community-based organizations, advocacy partners, and transit agencies to strengthen findings awareness

What can you do with this needs assessment?

- Internal advocacy!
- More documentation matters – this resource can be used as a guiding tool to find opportunities for solutions
- We need solutions!
 - Take a look through the report and share with us opportunities you see to meet needs.

Cassidy Giampetro
King County Mobility Supervisor
cgiampetro@hopelink.org

(425) 943-6752

Please contact us with any questions!



Snoqualmie Valley

MOBILITYCOALITION

Presentation: Countywide Planning Policies

Ben Larson, Regional Associate Planner
Karen Wolf, Senior Policy Analyst

KING COUNTY COUNTYWIDE PLANNING POLICIES & GROWTH TARGETS

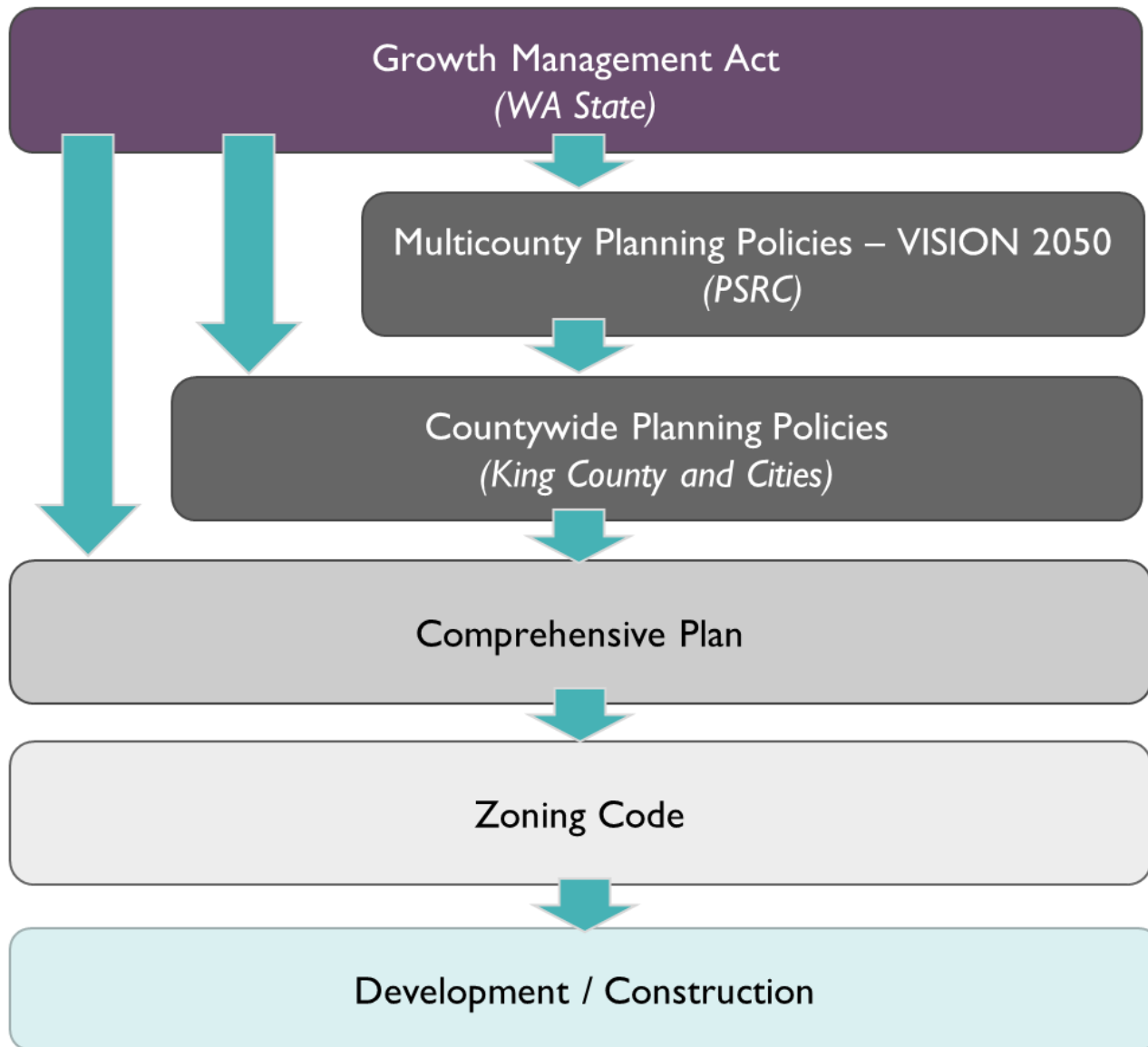
*PRESENTATION FOR FALL CITY COMMUNITY ASSOCIATION
APRIL 6, 2021*





TODAY'S AGENDA

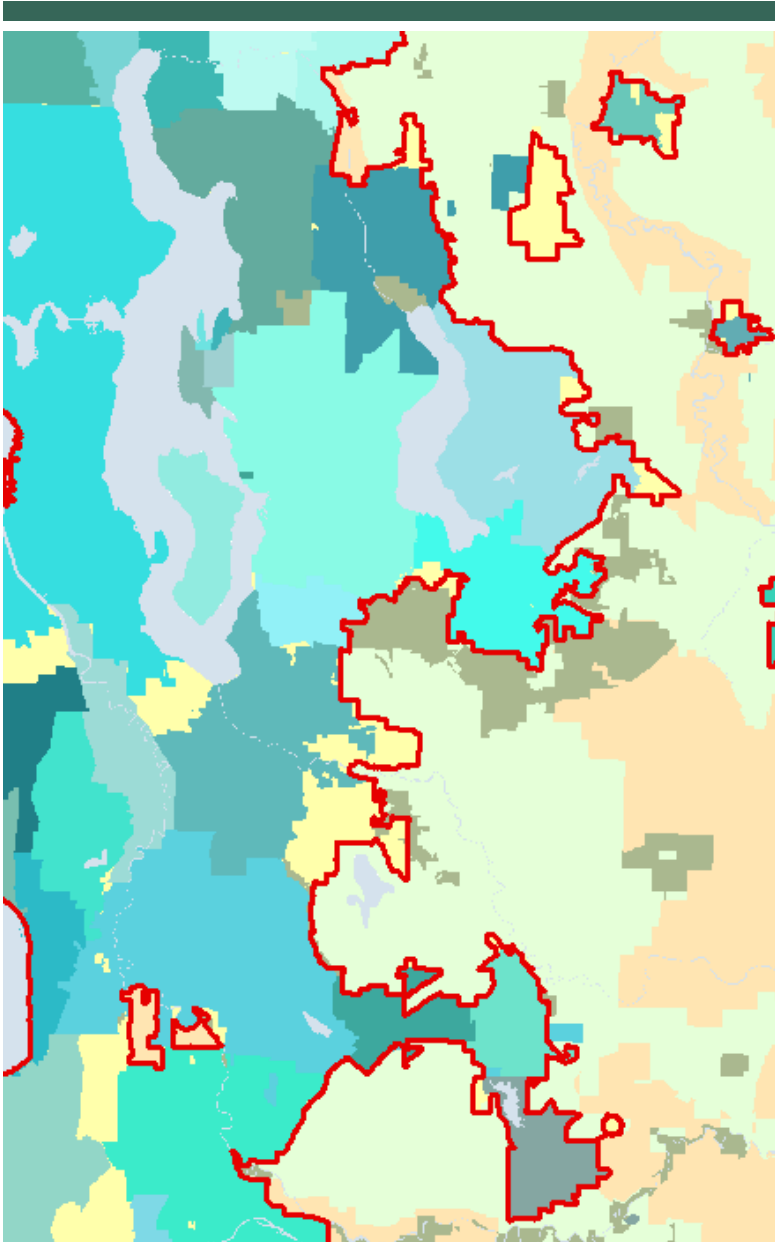
- GMA + GMPC Overview
- Countywide Planning Policies Update
 - Growth Targets
- Schedule



IMPLEMENTING THE GROWTH MANAGEMENT ACT

GROWTH MANAGEMENT PLANNING COUNCIL (GMPC)

- Established in 1992 via Interlocal Agreement
- Convened by the King County Executive
- Members representing: King County, City of Seattle, Sound Cities Associations
- Ex-Officio members representing: Special Purpose Districts, School Districts, Port of Seattle
- Oversee the Countywide Planning Policies including: the UGA, Growth Targets, policies for topics of a countywide nature that cross jurisdictional lines
- Make recommendations to the King County Council
- Ratification: after approval and ratification by the King County Council, approval of amendments within 90 days by county & cities representing at least 70% of the population and 30% of those jurisdictions



Countywide Planning Policies establish:

Guidance for the comprehensive plans

Urban growth area boundary

Criteria for revising growth boundary

Growth targets for each jurisdiction

Criteria for defining urban centers and manufacturing/industrial centers

Policies for issues of a countywide nature

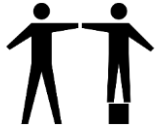
WHY UPDATE COUNTYWIDE PLANNING POLICIES NOW?

-
- VISION 2050 update + Regional Centers Framework
 - New growth targets for 2024 Comprehensive Plans
 - Policy guidance for 2024 Comprehensive Plans
 - Other policy and legislative changes since 2012
 - Policy recommendations from GMPC's Affordable Housing Committee

2021 COUNTYWIDE PLANNING POLICIES GUIDING PRINCIPLES

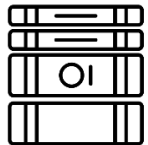


Establish a focused scope for review based on the 2012 baseline



Center social equity

Integrate regional policy & legislative changes



- VISION 2050
- GMA amendments – e.g. for buildable lands
- ST3 and other regional transit investments
- Address unresolved King County Comp. Plan countywide issues
- Policy recommendations from the GMPC's Affordable Housing Committee



Provide clear, actionable direction for comprehensive plans



Implement Regional Growth Strategy with 2044 growth targets that provide the land use assumption for periodic comprehensive plan updates

ENVIRONMENT KEY THEMES



- Emphasize climate change by adding a new subsection.
- Update the greenhouse gas reduction goals
- Protect and restore natural resources
- Address environmental justice
- Provide parks, trails, and open space within walking distance of urban residents prioritizing underserved communities.
- Call for the use of best available science when establishing and implementing environmental standards.

ECONOMY KEY THEMES



- Support advanced manufacturing throughout the county.
- Prioritize a diversity of middle-wage jobs.
- Foster a supportive environment for locally-, women-, and minority-owned businesses.
- Reduce historic and ongoing disparities in income and employment opportunities for communities that have been economically disadvantaged.
- Call for the development of a system that provides a safety net during economic downturns.
- Encourage the public and private sectors to incorporate environmental stewardship and social responsibility.

DEVELOPMENT PATTERNS KEY THEMES



- Integrate social equity and public health into local and countywide planning.
- Codify growth target and urban growth capacity report processes.
- Address four-to-one program provisions.
- Establish a Centers Designation Framework consistent with the PSRC regional framework
- Ensure better understanding of past housing and land use practices that have led to inequities by race and ethnicity.
- Develop new growth targets with a planning horizon to 2044, and link growth targets to land use assumptions in comprehensive plans.
- Strengthen city-county collaboration around annexation area planning. Clarify the process for reassigning potential annexation areas.
- Recognize the role of Cities in the Rural Area consistent with the King County Comprehensive Plan.

GROWTH TARGETS FOR CITIES IN THE SNOQUALMIE VALLEY

		Net New Housing Units 2019-2044	Net New Jobs 2019-2044
Cities and Towns	Algona	170	325
	Beaux Arts	1	0
	Black Diamond	2,900	680
	Carnation	799	450
	Clyde Hill	10	10
	Covington	4,310	4,496
	Duvall	890	990
	Enumclaw	1,057	989
	Hunts Point	1	0
	Maple Valley	1,720	1,570
	Medina	19	0
	Milton^	10	500
	Normandy Park	153	35
	North Bend	1,748	2,218
	Pacific	135	75
	Sammamish	700	305
	Skykomish^	10	0
Snoqualmie	1,500	4,425	
Yarrow Point	10	0	
Cities and Towns Subtotal		16,143	17,068

HOUSING KEY THEMES



- Align with existing plans including VISION 2050 and the Regional Affordable Housing Task Force Final Report and Recommendations.
- Redefine Countywide Need as the number of homes needed today and, in the future, to ensure that no low-income household is cost burdened.
- Guide cities and the county through a four-step continuous improvement process to meet the countywide need
- Establish regular monitoring of regional and jurisdictional progress through the Affordable Housing Dashboard and leverage new centralized data infrastructure created by King County staff that support the AHC.

HOUSING KEY THEMES, CONT'D.



- The CPP policy amendments are structured to achieve health and equity outcomes with five key equity objectives:
 - Equitable processes and outcomes;
 - Increased housing supply, particularly for households with the greatest needs;
 - Expanded housing options and increased affordability accessible to transit and employment;
 - Expanded housing and neighborhood choice for all residents; and
 - Housing stability, healthy homes, and healthy communities.

TRANSPORTATION KEY THEMES



- Emphasize creation of an equitable transportation system.
- Improve the safety of the system for all users.
- Encourage alternatives to driving along including transit and active transportation.
- Minimize displacement and impact on affected communities.
- Strengthen connections between land use and transportation.
- Promote a sustainable system by encouraging transit use, active transportation and alternative fuels.

PUBLIC FACILITIES + SERVICES KEY THEMES

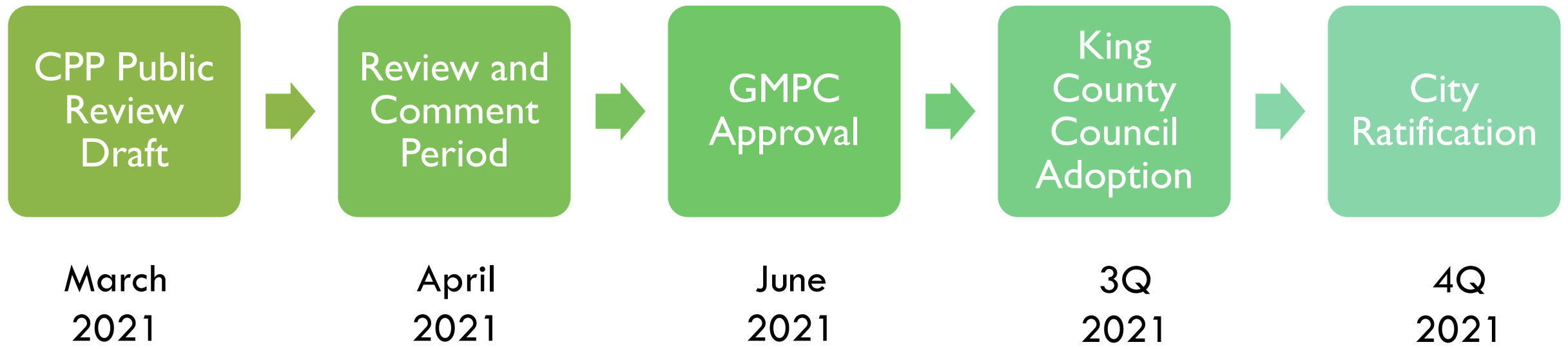


- Address impacts of climate change on fisheries and water reuse and reclamation.
- Make investments in renewable and alternative energy sources.
- Make the provision of telecommunication infrastructure a focus on broadband service to businesses and households of all income levels.
- Establish a process for public capital facilities of regional or statewide importance to incorporate equity in determining impacts and benefits.
- Prioritize investments for affordable and equitable access to public services.
- Consider climate change, economic and health impacts when siting and building essential public facilities.
- Preparation for natural disasters.

NEXT STEPS

- Draft Countywide Planning Policies released for public comment at the March 31st GMPC meeting
- Public comment from April 5th to May 5th
- Present public feedback to GMPC on May 26th
- Amend draft policies for June 24th GMPC meeting

COUNTYWIDE PLANNING POLICIES MILESTONES AND ADOPTION





FOR MORE INFORMATION

GMPC WEBSITE

THE KING COUNTY INTERJURISDICTIONAL TEAM

FACILITATOR: KAREN WOLF, FAICP: KAREN.WOLF@KINGCOUNTY.GOV

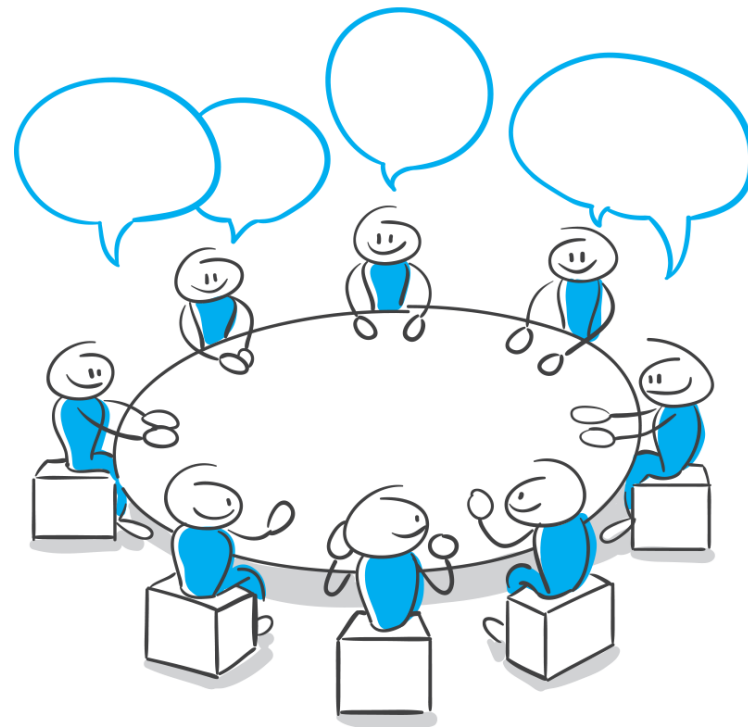
GROWTH TARGETS LEAD: REBECCA H MASKIN, AICP: RMASKIN@KINGCOUNTY.GOV

REGIONAL PLANNING ASSOCIATE: BEN LARSON: BLARSON@KINGCOUNTY.GOV

Snoqualmie Valley

MOBILITYCOALITION

Next Steps & Roundtable





Snoqualmie Valley

MOBILITYCOALITION

Next SVMC Task Force Meeting:

Friday, May 14th at 10:30am-12:00pm, on
Zoom.



Snoqualmie Valley

MOBILITYCOALITION

**Next SVMC General Coalition
Meeting:**

Friday, June 11th at 10:30am-12:00pm, on
Zoom.



Snoqualmie Valley

MOBILITYCOALITION

Thank You!

Salwa Raphael

Snoqualmie Valley Mobility

Coordinator

(425) 466-3442

sraphael@hopelink.org