



DESIGNED WITH THE FARMER IN MIND DESIGNED WITH THE FARMER

DUMP TRAILERS



FEED MORE





DESIGNED WITH THE FARMER IN MIND DESIGNED WITH THE FARMER IN MIND

CAPACITY TO IMPRESS



Greater distances between farms, increasing yields, changing weather conditions, and time restraints – harvest time presents a unique challenge to all farmers, no matter what the season.

Whether it's haylage, sugar beets, corn silage, or grain, there's a lot to take off the field and very little time to do it. Penta comes from a long history of farming, and we understand that transporting your crop is something that needs to be done quickly and reliably. That's why we designed Penta dump trailers to help you improve the efficiency of your operation.

Our dump trailers were designed with the farmer in mind. Start with the visibility inside the trailer

from the cab of your tractor, move to the unique loading and unloading features, and finish with an overbuilt frame and robust axles for increased strength and flotation.

Combining simplicity with strength, Penta dump trailers are the premium choice for the modern farmer. With on-the-farm testing and farmer input, Penta is providing a superior option for quickly transporting and delivering your crops in perfect condition.



FLEXIBLE OPTIONS

There are five sizes of trailers currently available, each suited to your unique needs. They range in size from 30 to 70 cubic meters. The DB70 and DB60 are larger machines best suited for large or custom operations. The DB50 is our standard machine, suitable for all types and sizes of operations. The DB40 and DB30 are versatile trailers that serve many purposes.



STANDARD

HYDRAULIC JACK

- Ease of hitching



STANDARD

BKT TIRES

- Excellent flotation
- Very reliable
- Aggressive tread pattern
- Tire Size 850/50R30.5



STANDARD

HYDRAULIC BRAKES

- Easy to use & set up
- Compatible with most tractors



STANDARD

LOCKING GRAIN DOOR

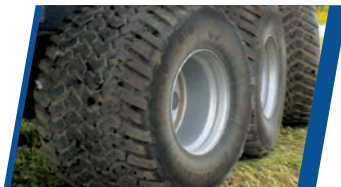
- Seals tightly



STANDARD

TONGUE CYLINDER

- Helps level machine for transportation in rough fields
- Transfers weight to tractor for easier handling
- Accumulator assists in smooth operation of machine



MICHELIN TIRES

- Excellent flotation
- Self-cleaning tread pattern



AIR BRAKES

- Compatible with air brake equipped tractors



HYDRAULIC GRAIN DOOR

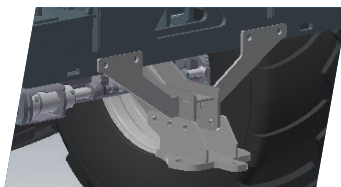
- Simple control of product flow



STANDARD - DB70 ONLY

POWER PACK

- Oil reservoir to work with all hydraulic systems



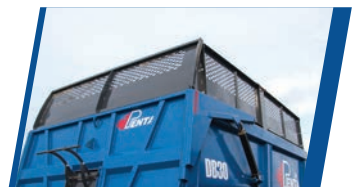
REAR HITCH ASSEMBLY

- Allows towing of additional equipment



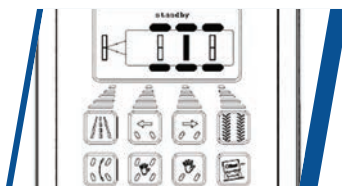
WORK LIGHTS

- Assists in night time operations



EXTENSIONS

- 32" standard
- Manual fold-down option;
- Hydraulic fold-down option
- Sugar beet option



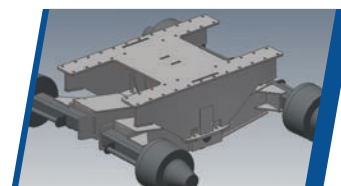
ELECTRONIC STEERING

- Maximizes stability on highway
- Steers in reverse
- Electronic sensor adjusts steering control based on vehicle speed
- Tractor angle directs steering unit



TRACTOR PENDANT

- All controls in cab at fingertips
- Multiple options available
- Consolidation of hydraulic controls



WALKING BEAM

- Robust suspension
- Simple design
- Low maintenance

Liners are available upon request



DESIGNED WITH THE FARMER IN MIND DESIGNED WITH THE FARMER IN MIND



UNIQUE BOX DESIGN

The Penta dump trailer sits on eight identical mounting knuckles – two on each corner. Pins are inserted in the rear knuckles to keep the box fixed while lifting. By providing eight identical knuckles, the pins can be switched to reverse lifting, again increasing your ability to fill the box while travelling behind a harvester.

Removable extensions come standard, and are simple to remove if less height is required. As well, a graphite-coated inside and a hydraulic tailgate increase the efficiency of unloading, saving time and hassle.

USER-FRIENDLY OPERATION

The front of the trailer is designed to be operator friendly. Exceptional visibility is achieved with a viewing window covered with plexiglass, making it effortless for the operator to view inside while loading. A foldaway front ladder is also featured for when a closer look is required. A hydraulic front gate tilts forward for the initial pass through the field for ease of loading while following a forage harvester.

All models are built with a wide tub, allowing for easy filling with any harvester. The tub also features rounded corners and tapers out towards the bottom and rear, allowing for product to easily slide out when it's time to unload.



TRANSPORT MADE SIMPLE

Superior flotation and ease of transport are strong features of the dump trailer product line. All models feature 800/45R26.5 tires - providing flotation in challenging field conditions, and minimizing the horsepower required to pull each unit.

The DB50, DB60, and DB70 models also feature front and rear steering axles. The steering system is a follow steering system, and is operated through hydraulic lock and unlock. For road transport, the steering system can be hydraulically locked out to improve stability.

Hydraulic brakes come standard on all models, with air brakes available as an option.

ELECTROSTEER

- Steering adapts to vehicle speed



STRENGTH AND STABILITY

Reliable and safe equipment is increasingly important during harvest seasons. The entire Penta dump trailer lineup features a robust frame and heavy-duty suspension, as well as a unique cylinder system designed to keep the frame and trailer stable during unload. Two stabilization cylinders are found mounted on each of the rear axles – this feature is found on the 3 rear axles of the DB70, the 2 rear axles of the DB50 and DB60, and the rear axle of the tandem axle DB40 and DB30.

As soon as the operator begins to lift the main hoist cylinder, oil is first diverted to these stabilization cylinders. The cylinders extend fully and prevent the trailer from leaning one way or the other. The cylinders keep hydraulic pressure and remain stable until the trailer is completely lowered.

Also featured are hose burst valves – in the case of a hydraulic line blowing on the system, the valves will instantly shut off and prevent the cylinders from losing pressure.



DIGI-STAR WEIGHLOG

Penta dump trailers now feature an optional Digi-Star WeighLog system, originally developed for the loader market. This system has been modified and calibrated to work with all Penta dump trailers, and can be retrofitted to existing units.

The WeighLog provides a user-friendly, onboard weighing method that can be used in all dump trailer applications. The system records and stores each load as it is weighed, meaning that the operator knows the weight of every load coming out of the field. Additionally, you can separate loads by farm and field, and transfer the data to a computer or tablet.

By removing guess work and reducing travel time to offsite scales, the WeighLog system provides an efficient and precise method of documenting yields and feed volumes.

DIGI★STAR

PRECISELY





DESIGNED WITH THE FARMER IN MIND DESIGNED WITH THE FARMER IN MIND



DB30

FEATURES

Axles	Tandem
Steering Axles	Optional Rear Steer
Extension Height	32"
Front Tilt Extension	Hydraulic
Tailgate	Hydraulic
Grain Door	Manual/Optional Hydraulic
Tires	Standard - BKT FL630 800/45R26.5 Optional - Michelin 800/45R26.5

Specifications	
Total Length	292"
Total Height (With Tires and 32" Extensions)	148"
Outside Width (With Tires)	127"
Interior Dimensions (LxWxH)	17.25' X 9.5' X 7.3'
Tandem Axle Weight Capacity	40,000 lbs / 18,140 kg
Volume (with extensions)	1050 cu. ft. / 30 m ³
Silage Capacity	13 tons
Hoist Oil Volume	5.55 US Gal. / 21 Litres
Minimum Tractor H.P.	160



DB40

FEATURES

Axles	Tandem
Steering Axles	Optional Rear Steer
Extension Height	32"
Front Tilt Extension	Hydraulic
Tailgate	Hydraulic
Grain Door	Manual/Optional Hydraulic
Tires	Standard - BKT FL630 800/45R26.5 Optional - Michelin 800/45R26.5

Specifications	
Total Length	336"
Total Height (With Tires and 32" Extensions)	148"
Outside Width (With Tires)	127"
Interior Dimensions (LxWxH)	21.4' X 9.5' X 7.3'
Tandem Axle Weight Capacity	40,000 lbs / 18,140 kg
Volume (with extensions)	1400 cu. ft / 40 m ³
Silage Capacity	17.5 tons
Hoist Oil Volume	8.5 US Gal / 32 Litres
Minimum Tractor H.P.	180



DB50

FEATURES

Axles	Tri-Axle – Standard Tandem Axle – Optional
Steering Axles	2 steering, 1 fixed (Tri-Axle)
Extension Height	32"
Front Tilt Extension	Hydraulic
Tailgate	Hydraulic
Grain Door	Manual/Optional Hydraulic
Tires	Standard - BKT FL630 800/45R26.5 Optional - Michelin 800/45R26.5

Specifications	
Total Length	405"
Total Height (With Tires and 32" Extensions)	148"
Outside Width (With Tires)	127"
Interior Dimensions (LxWxH)	26.6' x 9.5' x 7.3'
Tandem Axle Weight Capacity	40,000 lbs / 18,140 kg
Tri-Axle Weight Capacity	60,000 lbs / 27,200 kg
Tandem Walking Beam Capacity	27,200 kg
Volume (with extensions)	1850 cu. ft. / 52 m ³
Silage Capacity	23 tons
Hoist Oil Volume	12.68 US Gal / 48 Litres
Minimum Tractor H.P.	220



DB60

FEATURES

Axles	Tri-Axle
Steering Axles	2 steering, 1 fixed
Extension Height	32"
Front Tilt Extension	Hydraulic
Tailgate	Hydraulic
Grain Door	Manual/Optional Hydraulic
Tires	Standard - BKT FL630 800/45R26.5 Optional - Michelin 800/45R26.5

Specifications	
Total Length	405"
Total Height	148"
Outside Width	142"
Interior Dimensions	26.6' x 10.5' x 7.3'
Tandem Axle Weight Capacity	N/A
Tri-Axle Weight Capacity	60,000 lbs / 27,200 kg
Tandem Walking Beam Capacity	27,200 kg
Volume	2050 cu. ft. / 58 m ³
Silage Capacity	26 tons
Hoist Oil Volume	16.38 US Gal / 62 Litres
Minimum Tractor H.P.	240hp



DB70

FEATURES

Axles	Quad-Axle – Standard
Steering Axles	2 steering, 2 fixed (Quad-Axle)
Extension Height	32"
Front Tilt Extension	Hydraulic
Tailgate	Hydraulic
Grain Door	Manual/Optional Hydraulic
Tires	Standard - BKT FL630 800/45R26.5 Optional - Michelin 800/45R26.5

Specifications	
Total Length	468"
Total Height (With Tires and 32" Extensions)	148"
Outside Width (With Tires)	142"
Interior Dimensions (LxWxH)	32.6' X 10.5' X 7.3'
Quad-Axle Weight Capacity	80,000 lbs / 36,285 kg
Volume (with extensions)	2475 cu. ft. / 70 m ³
Silage Capacity	31 tons
Hoist Oil Volume	26.4 US Gal / 100 Litres*
Minimum Tractor H.P.	250

* DB70 comes standard with on board hydraulics – includes hydraulic oil reservoir and hydraulically operated pump

FIELD TO FARM TO FIELD



FEED WITH PENTA

	MODEL	PENTA DB30	PENTA DB40	PENTA DB50	PENTA DB60	PENTA DB70
FEATURES	Axles	Tandem	Tandem	Tri-Axle – Standard Tandem Axle – Optional	Tri-Axle	Quad-Axle – Standard
	Steering Axles	N/A	N/A	2 steering, 1 fixed (Tri-Axle)	2 steering, 1 fixed	2 steering, 2 fixed (Quad-Axle)
	Extension Height	32"	32"	32"	32"	32"
	Front Tilt Extension	Hydraulic	Hydraulic	Hydraulic	Hydraulic	Hydraulic
	Tailgate	Hydraulic	Hydraulic	Hydraulic	Hydraulic	Hydraulic
	Grain Door	Manual/Optional Hydraulic	Manual/Optional Hydraulic	Manual/Optional Hydraulic	Manual/Optional Hydraulic	Manual/Optional Hydraulic
	Tires	Standard BKT FL630 800/45R26.5 Optional Michelin 800/45R26.5	Standard BKT FL630 800/45R26.5 Optional Michelin 800/45R26.5	Standard BKT FL630 800/45R26.5 Optional Michelin 800/45R26.5	Standard BKT FL630 800/45R26.5 Optional Michelin 800/45R26.5	Standard BKT FL630 800/45R26.5 Optional Michelin 800/45R26.5
SPECIFICATIONS	Total Length	292"	336"	405"	405"	468"
	Total Height (With Tires and 32" Extensions)	148"	148"	148"	148"	148"
	Outside Width (With Tires)	127"	127"	127"	139"	139"
	Interior Dimensions (LxWxH)	16.7' x 9.5' x 7.5'	21' x 9.5' x 7.5'	26' x 9.5' x 7.5'	26.6' x 10.5' x 7.3'	32 x 10.5' x 7.5'
	Unit Weight	19,000 lbs	21,000 lbs	Tandem 24,300 lbs/Tridem 27,700 lbs	29,000 lbs	38,500 lbs
	Tandem Axle Weight Capacity	40,000 lbs / 18,140 kg	40,000 lbs / 18,140 kg	40,000 lbs / 18,140 kg	N/A	N/A
	Tri-Axle Weight Capacity	N/A	N/A	60,000 lbs / 27,200 kg	60,000 lbs / 27,200 kg	N/A
	Quad-Axle Weight Capacity	N/A	N/A	N/A	N/A	80,000 lbs / 36,285 kg
	Volume (with extensions)	1050 cu. ft / 30 m ³	1400 cu. ft / 40 m ³	1850 cu. ft / 52 m ³	2050 cu. ft. / 58 m ³	2475 cu. ft / 70 m ³
	Silage Capacity	13 tons	17.5 tons	23 tons	26 tons	31 tons
	Hoist Oil Volume	5.55 US Gal / 21 Litres	8.5 US Gal / 32 Litres	12.68 US Gal / 48 Litres	16.38 US Gal / 62 Litres	26.4 US Gal** / 100 Litres**
Minimum Tractor H.P.	140	160	190	220	240	

** DB70 comes standard with On Board Hydraulics – includes hydraulic oil reservoir and hydraulically operated pump