

Cropping your seamless pattern

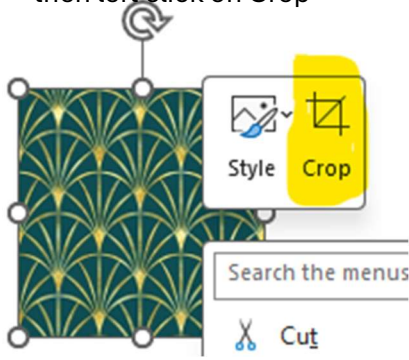
How to crop your pattern for a full sheet if there is a large margin on the right to make it fit with a 1/2 inch border all around it.

How to crop:

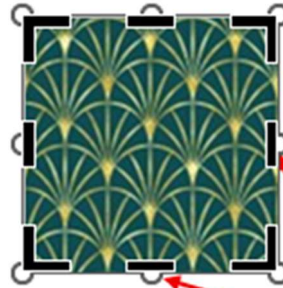
Original seamless square



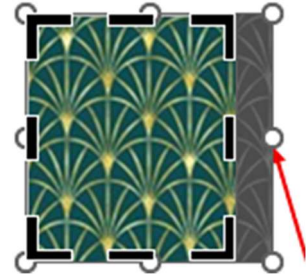
Right-click on the seamless square then left click on Crop



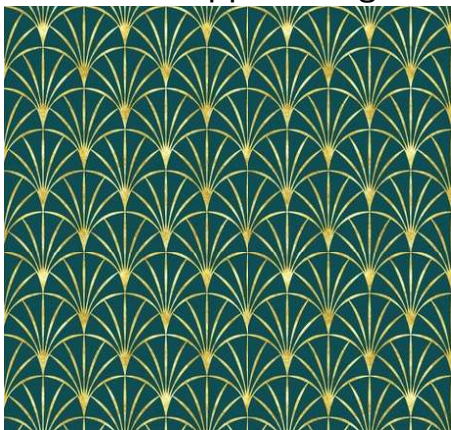
You will click on the straight lines in the center of each side



Drag the side toward center of the seamless square



All four cropped images



Cropping from the right to make this piece

Full pattern



Cropped on the right





Cropped on the bottom



Cropped on the right and the bottom

Crop again from the bottom to make this piece

The next page has the full sheet of wallpaper made from these blocks. The white lines are not really there, it is a display issue.

