

# High Speed Camera

Research/Defense/Aerospace



**SH3-108**

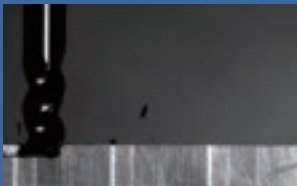
## ■ Product Description

**SH3-108** is another masterpiece of MINI series for high-end scientific research and industry in SinceVision's intelligent high-speed camera family, which has a perfect balance of body size and heat dissipation through its 20-layer PCB stacking design and 10Gbps Serdes on-board interconnection technology. At the same time, thanks to the self-developed array parallel storage architecture, the maximum storage in the device can be expanded to 4TB.

## ■ Features

- Support intelligent triggering: automatically triggered as the image changes
- Equipped with 10 Gigabit network transmission interface, compatible with Gigabit Ethernet.
- Supports up to 64 memory partitions.
- Rich ISP processing, automatic white balance, intelligent denoising
- Continuous dynamic adjustment of resolution and frame rate.

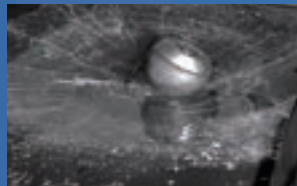
## ■ Typical Applications



Mechanical Motion



Welding Detection



Drop Test



Flame Study



**Hi-Tech Electronics Pte Ltd**

Tel : (+65) 8855 3883 WhatsApp

Email: [sls@hitech.com.sg](mailto:sls@hitech.com.sg)

High-speed Capture,  
Track and Analyse....

**HI-TECH Resources  
(Thailand) Co., Ltd**

 (66) 094-1155-699

 [info@hitec.co.th](mailto:info@hitec.co.th)



## ■ Specification

Model	SH3-108
Max. Resolution	1280×1024
Full Frame Rate	8000fps
Max. Frame Rate	550000fps
Min. Exposure Time	1μs (100ns customizable)
Cell Size	14.6μm
Standard RAM	16G, 32G, 64G (Optional)
Extended Memory	1T, 2T, 4T (Optional)
Dynamic Range	60dB
Analog Gain	×2, ×4, ×8
Bit Depth	8bit/10bit/12bit
Shutter Type	Global Shutter
Color	Monochrome / Color
ROI	Support
Lens Mount	E Port, detachable, adaptable to F Port, C Port, EF Port
Data Interface	10 Gigabit Ethernet, compatible with Gigabit Ethernet
Sensitivity	ISO56000(M) ISO21000(C)
Fan Control	Support turning on / off, adaptive rotary speed according to temperature
Operating Temperature/ Humidity	Standard -10~50°C, below 95%(no condensation), customizable -35~65°C wide temperature range version
Video Signal Output	Ethernet
Recording Mode	Start, End, Center, Random, Manual
Trigger Mode	Manual, IO, Image
External Signal	Input: trigger (TTL/switch), sync signal, ready signal, event signal, IRIGB Output: trigger, sync signal, ready signal
Power Supply	DC24V
Dimensions (excluding lens)	90D×110W×110H, excluding protrusion parts
Weight	< 1.6kg
Power Consumption	< 30W
Standard Accessories	Power cord×1, AC Adaptor×1, Network cable×1, Camera Control Software×1 Product Manual×1, Qualified Certificate×1

## ■ Performance

Resolution	Frame Rate	Recording time (memory)			Recording time (hard disk)		
		16GB	32GB	64GB	1TB	2TB	4TB
1280×1024	8000FPS	1.6s	3.2s	6.4s	102s	204s	408s
1280×800	10000FPS	1.6s	3.2s	6.4s	102s	204s	408s
1280×512	16000FPS	1.6s	3.2s	6.4s	102s	204s	408s
1280×256	32000FPS	1.6s	3.2s	6.4s	102s	204s	408s
1280×128	64000FPS	1.6s	3.2s	6.4s	102s	204s	408s
1280×8	550000FPS	3s	6s	12s	192s	384s	768s

- ※ The above recording time (hard disk) are non-real writing time;
- ※ The above recording time is based on the grayscale 8 bits;
- ※ Hard disk version SH3-101/103 supports real-time writing,  
and SH3-105/108 supports real-time writing with restricted parameters;
- ※ The hard disk version supports real-time write speeds at 30Gbps (Max.).

### Hi-Tech Electronics Pte Ltd

Tel : (+65) 8855 3883 WhatsApp \_\_\_\_\_

Email: [sls@hitech.com.sg](mailto:sls@hitech.com.sg)

**High-speed Capture,  
Track and Analyse....**

### HI-TECH Resources (Thailand) Co., Ltd

☎ (66) 094-1155-699

✉ [info@hitec.co.th](mailto:info@hitec.co.th)

