

High Speed Camera

SMART Series

Research/Defense/Aerospace



SH2-203

■ Product Description

SH2-203 is another masterpiece of Smart series for high-end scientific research and industry in SinceVision's intelligent high-speed camera family, which has a perfect balance of body size and heat dissipation through its 20-layer PCB stacking design and 10Gbps Serdes on-board interconnection technology. At the same time, thanks to the brand new hardware architecture design, it has good environmental adaptability.

■ Features

- High Definition: 1080P@3200FPS
- Equipped with 10 Gigabit network transmission interface, compatible with Gigabit Ethernet.
- Minimum exposure time 100ns, 150ns dual-exposure time PIV.
- Multiple triggering modes, supporting single recording and multiple event triggering.
- Extreme size and excellent 200G impact resistance.

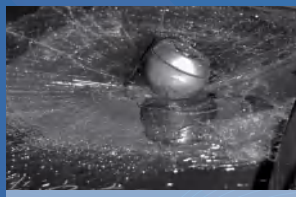
■ Typical Applications



Mechanical Motion



Welding Detection



Drop Test



Flame Study

■ Specification

Model	SH2-203
Max. Resolution	1920×1080
Full Frame Rate	3200fps
Max. Frame Rate	300000fps
Min. Exposure Time	100ns
Cell Size	10um
Standard RAM	16G/64G/256G/512G/1TB/2TB
Dynamic Range	60dB
Analog Gain	×2, ×4, ×8
Bit Depth	8bit/10bit/12bit
PIV Shutter	150ns
Color	Monochrome / Color
ROI	Support
Lens Mount	E Port, detachable, adaptable to F Port, C Port, EF Port
Data Interface	10 Gigabit Ethernet, compatible with Gigabit Ethernet
Sensitivity	ISO30000(M) ISO10000(C)
Fan Control	Support turning on / off, adaptive rotary speed according to temperature
Operating Temperature/ Humidity	Standard -10~50°C, below 95%(no condensation), customizable -40~65°C wide temperature range version
Video Signal Output	Ethernet/3G-SDI
Recording Mode	Start, End, Center, Random, Manual
Trigger Mode	Manual, IO, Image
External Signal	Input: trigger (TTL/switch), sync signal, ready signal, RS422,event signal, IRIG Output: trigger, sync signal, ready signal
Power Supply	DC24V
Dimensions (excluding lens)	89D×72W×72H, excluding protrusion parts and len mount
Weight	730g (E□),680g(C□)
Power Consumption	< 30W
Standard Accessories	Power cord×1, AC Adaptor×1, Network cable×1, Camera Control Software×1 Product Manual×1, Qualified Certificate×1

■ Performance

Resolution	Frame Rate	Recording time			
		16GB	64GB	1TB	2TB
1920×1080	3200FPS	2.5s	5s	2.6min	5.2min
1920×720	4800FPS	2.5s	5s	2.6min	5.2min
1920×512	4600FPS	2.5s	5s	2.6min	5.2min
1920×256	13500FPS	2.5s	5s	2.6min	5.2min
1920×128	26200FPS	2.6s	5.2s	2.6min	5.2min
1920×8	224000FPS	5s	10s	5.1min	10.2min
1920×4	300000FPS	7.4s	14.8s	7.5min	15.1min

※ Other memory versions record the time and so on, such as the 512G B version is half of the 1TB version;

※ The above recording time is based on the grayscale 8 bits.

■ Services

- ☆ **1-on-1 service, free trial shots, provision of solutions for free;**
- ☆ **Worry-free after-sales service, free hardware warranty and freelifetime software upgrades;**
- ☆ **Chinese brand, flexible and controllable delivery date, customized service available.**

■ Contact

Web: www.cnsszn.com

Tel: 0755-29655425 400-966-0626

Headquarters: 5th Floor, Building 2,Chongwen Industrial Park, Nanshan Zhiyuan, Nanshan District, Shenzhen, China

Dongguan Office: Room 406, Building F4, Tian'an Digital City, Nancheng District, Dongguan City, Guangdong Province, China

East China Office: Room 1305,Building 7,Xiangyu Liang'an Trade Center, No.1588, Chuangye Road, Kunshan, Jiangsu Province, China

North China Office: Unit 922, Building 4, Times Fortune World, Courtyard 1, Hangfeng Road, Fengtai District, Beijing, China

Southwest China Office: Room 604, Block B,Yingchuang Interational Building, No. 66, Chuangzhi South 1st Road, Pidu District, Chengdu, China



SinceVision's
Official WeChat Account



SinceVision's
TikTok Account

