

# ETERNALIGHT MICRO LED

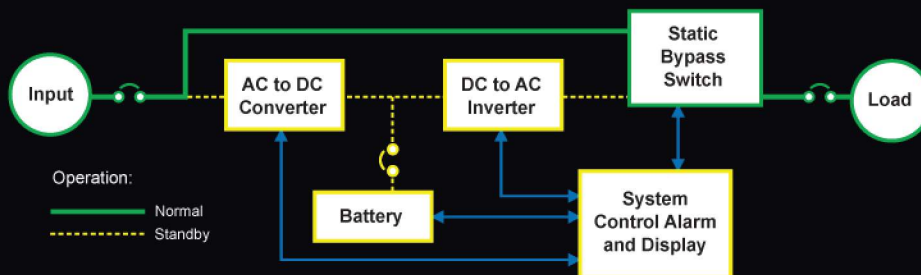
## STAND-BY EMERGENCY LIGHTING INVERTER

KEEP THE LIGHTS "ON" WHEN YOU NEED THEM THE MOST

**SINGLE PHASE 75W - 375 W**

Defends your environment against unwanted power outage and electrical disturbances by providing:

- DSPM Watchdog software always on guard.
- Dependable DSP/PWM technology for unsurpassed reliability
- Economical for the lowest overall cost for your light safety, with an Energy Star Rating.
- **300-1800%** In-rush on batteries. Power level dependent.
- Sealed maintenance-free batteries.
- Full light output for entire 90 minutes.
- Self-diagnostics for a safe and secure lighted environment.
- ECM module is a patented technology used by DSPM.
- Backup solutions for multiple applications such as: indoor and outdoor emergency lighting, exits, cash registers, computers, strategic solutions, and more!
- 10 Year pro-rated battery warranty.
- 5 Year power train warranty.
- Listed to UL924, UL1778, and UL508.
- Cities of Chicago, Los Angeles and New York approved.
- Environmentally friendly.
- Complies with the Buy American Act.



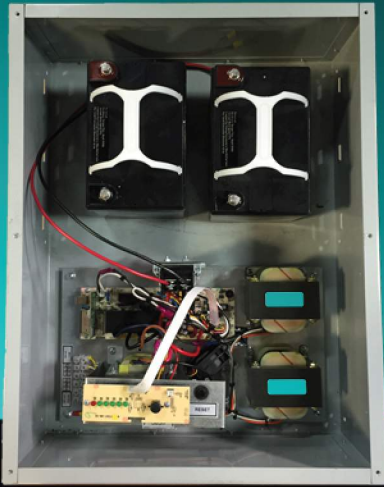
ENGINEERED FOR  
**LED IN-RUSH**

# ETERNALIGHT MICRO LED

## STAND-BY EMERGENCY LIGHTING INVERTER

KEEP THE LIGHTS "ON" WHEN YOU NEED THEM THE MOST

### SINGLE PHASE 75W - 375 W



- 75, 100, 125, 200, 300, and 375 Watts.....Standard Power Levels
- 120 or 277 VAC.....Input Voltage
- +10%. -15%.....Input Voltage Range
- 120 or 277 VAC.....Output Voltage
- ±5% for all loads and battery discharge mode.....Output Voltage Regulation
- 60 Hz, ±1%.....Output Frequency Range
- 2.5:1 typical.....Crest Factor
- Input Main Circuit Breaker.....Input Protection
- Output Main Circuit Breaker.....Output Protection
- The unit will protect itself and the load.....Surge Protection against surges as defined in ANSI/IEEE C62.45 category A and B
- Sealed maintenance-free (AGM) lead calcium.....Battery
- Conforms to UL924 standards.....Recharge Current
- Provision for hardware connection of.....External Battery external battery cabinets or DC source
- ≥99% at 100% linear load.....Efficiency
- <45dB measured on Response Curve "A".....Audible Noise
- UL924 and UL1778 (PENDING).....ETL Listed
- 0° to 40°C (32° to 104°F).....Operating Temperature
- 20° to 60°C (-4° to 140°F).....Storage Temperature
- 5 - 95%, Non-condensing.....Humidity
- LED Displays Alarms and Diagnostics.....Monitoring
- 16msec - 60msec.....Transfer Time

**Options:**

- ECM - Environmental Control Module
- NOF - Normally OFF Circuit
- STUM - Onsite Startup
- EW - Extended Warranty

Specifications subject to change without notice.

Micro Series	Power Rating	UPS Cabinet Dimensions			Weight (lbs)
		W	H	D	
CMIC (Consult factory for others)	75	17.5"	22.5"	8"	45
	100	17.5"	22.5"	8"	48
	125	17.5"	22.5"	8"	48
	200	17.5"	22.5"	8"	54
	300	17.5"	22.5"	8"	66
	375	17.5"	22.5"	8"	79

**For more information and pricing contact:**



**Thad Everson**  
(608)999-0039

[teverson@facilitygateway.com](mailto:teverson@facilitygateway.com)

**Frank Horner**  
(608)692-9236

[fhorner@facilitygateway.com](mailto:fhorner@facilitygateway.com)