



# Technical Data

Specification & Capacities

## MPK10.2



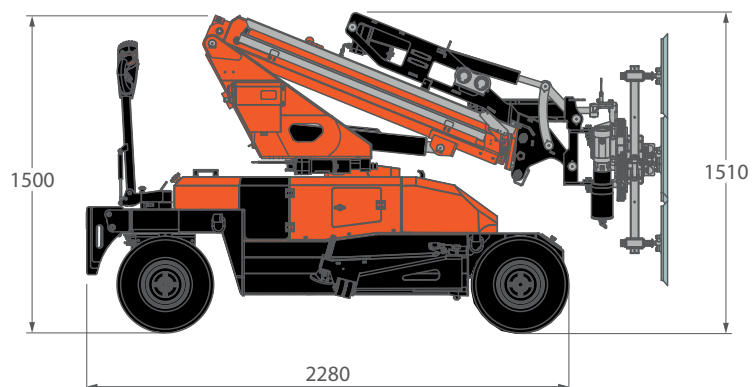
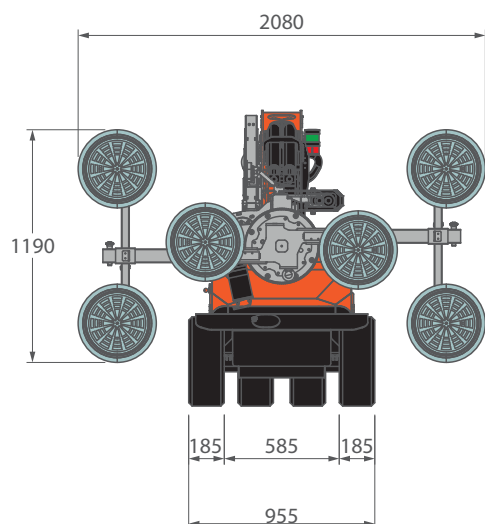
EN 13000:2014

06.12.2024 | Rev0.1

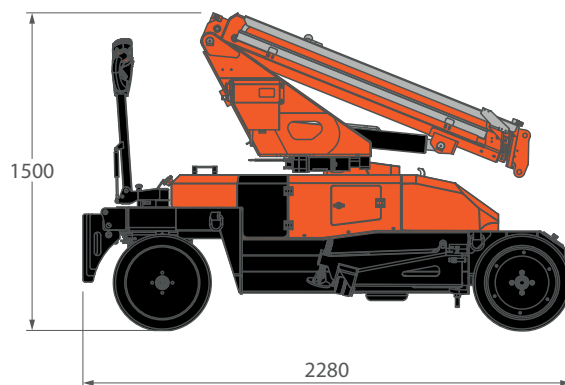
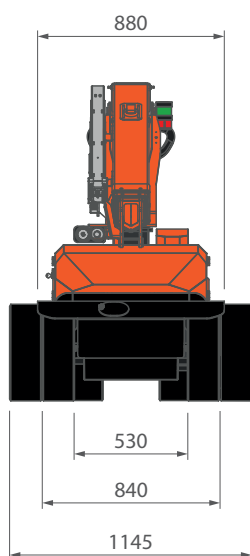
[m] [kg]

## OVERALL DIMENSIONS

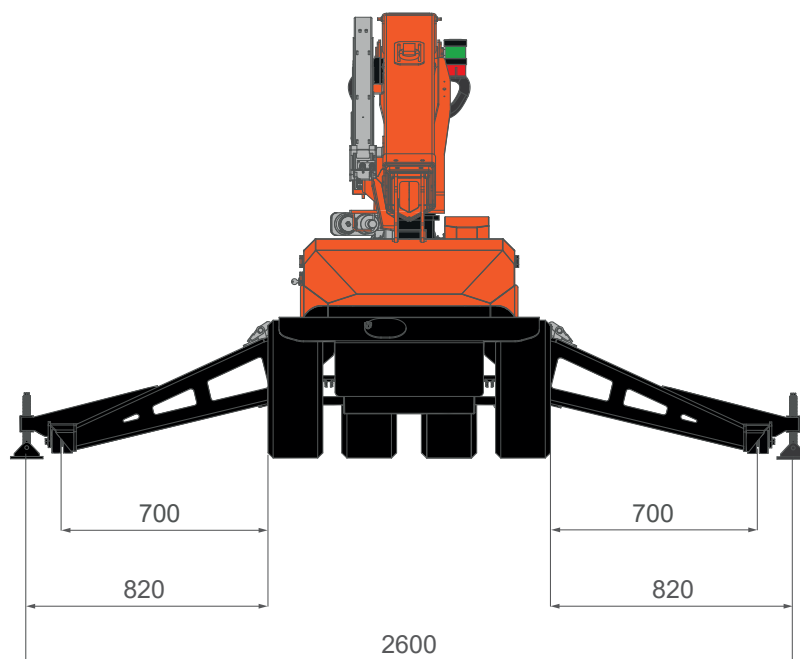
### OUTDOOR WHEELS



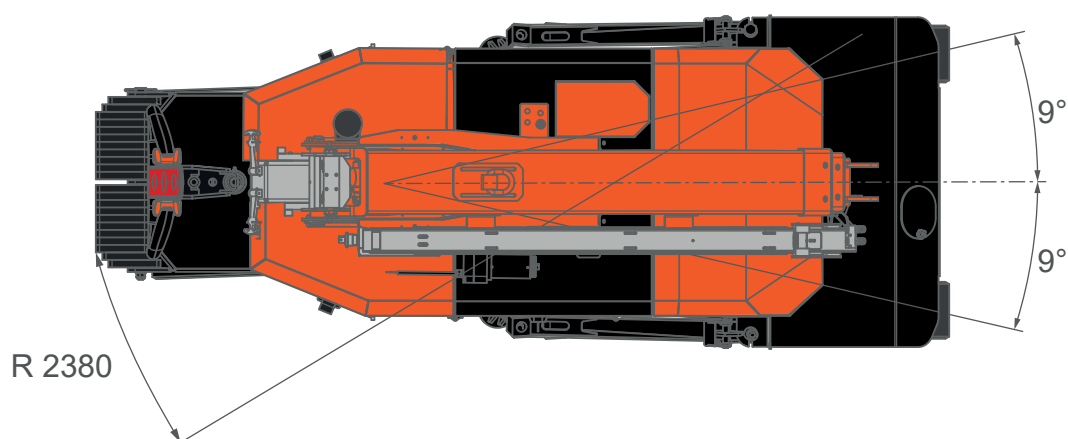
### TWIN WHEELS



## OUTRIGGERS






## BOOM SWING




## OVERALL INFORMATIONS

CRANE INFO			DESCRIPTION	U.M	VALUE
		OVERALL DIMENSIONS	Height	mm	1.500
			Length		2.280
			Width		955
		BOOM	Length	m	1,57 - 3,5
			Speed	s	48
		SLEWING	Angle	°	-9°/+9°
			Speed	s	7
		LIFTING	Working Angle	°	-21°/58°
			Speed	s	42
		MAX CAPACITY		kg	990
		REAR WHEEL MAX LOAD		kg	410 <sup>[1]</sup>
		FRONT WHEEL MAX LOAD	Turret positioned at 0°		980 <sup>[2]</sup>
			Turret slewed by 9°		1.320 <sup>[2]</sup>
		TRAVEL SPEED		km/h	4
		GRADEABILITY		°	13° [23%] <sup>[3]</sup>
		WORKING TEMPERATURE		°C	-20°/+40°
		Lifting Class (UNI 4301-1)		A1	

WEIGHTS		CRANE	MPK10.2 (no counterweights)	kg	1.045 <sup>[4]</sup>
		COUNTERWEIGHT	CW1 (into frame)	kg	100
			CW2 (into hood)		130
		TOTAL	MPK10.2	kg	1.275

ACCESSORIES		JIB	JIB-MPK10	kg	18
		JVM MANIPULATOR	JVM10.2 (standard configuration)	kg	179

ENGINE		ELECTRIC	Battery Voltage	V	24
			Power	kW	2,2

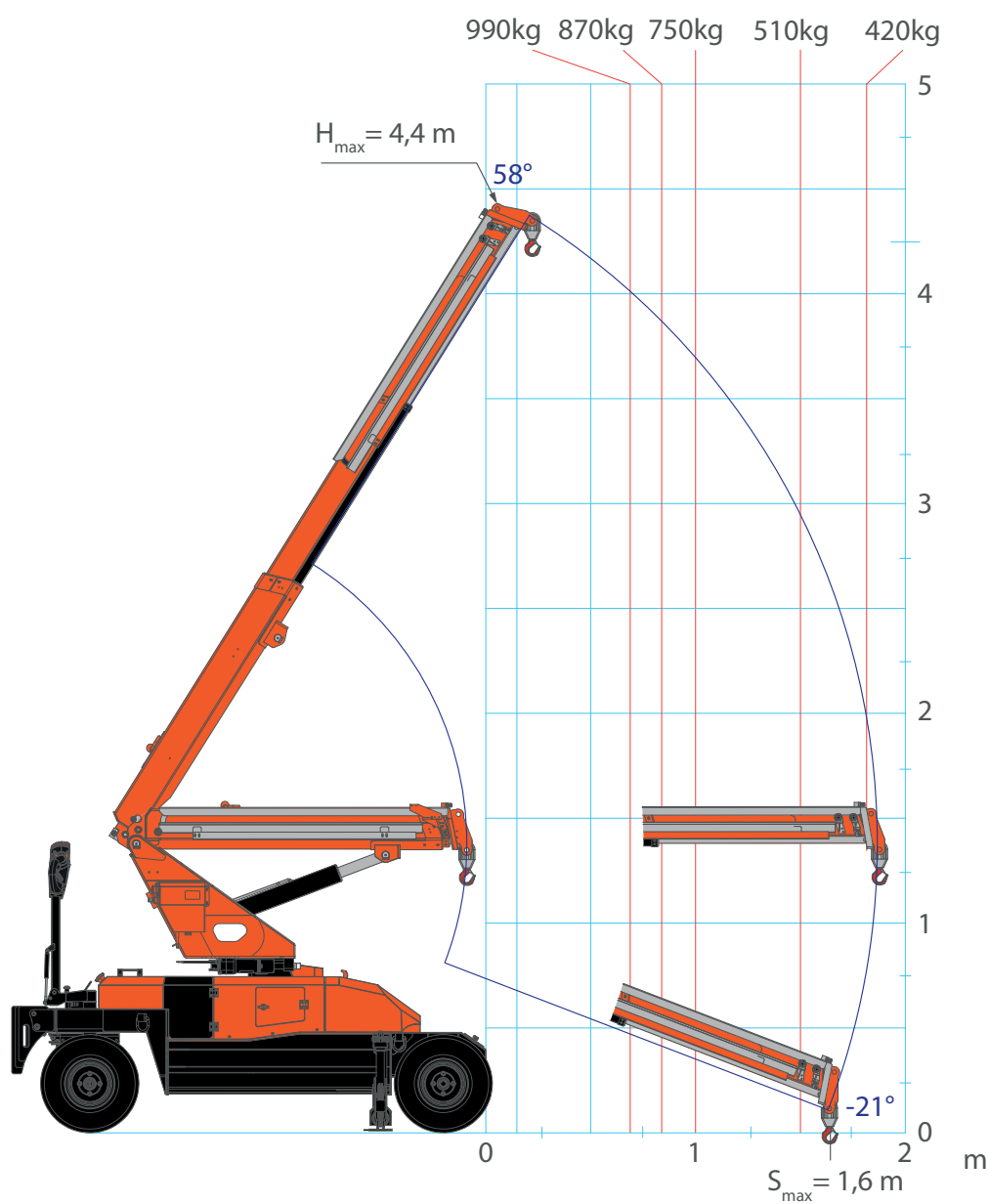
<sup>[1]</sup>: Without load

<sup>[2]</sup>: With load

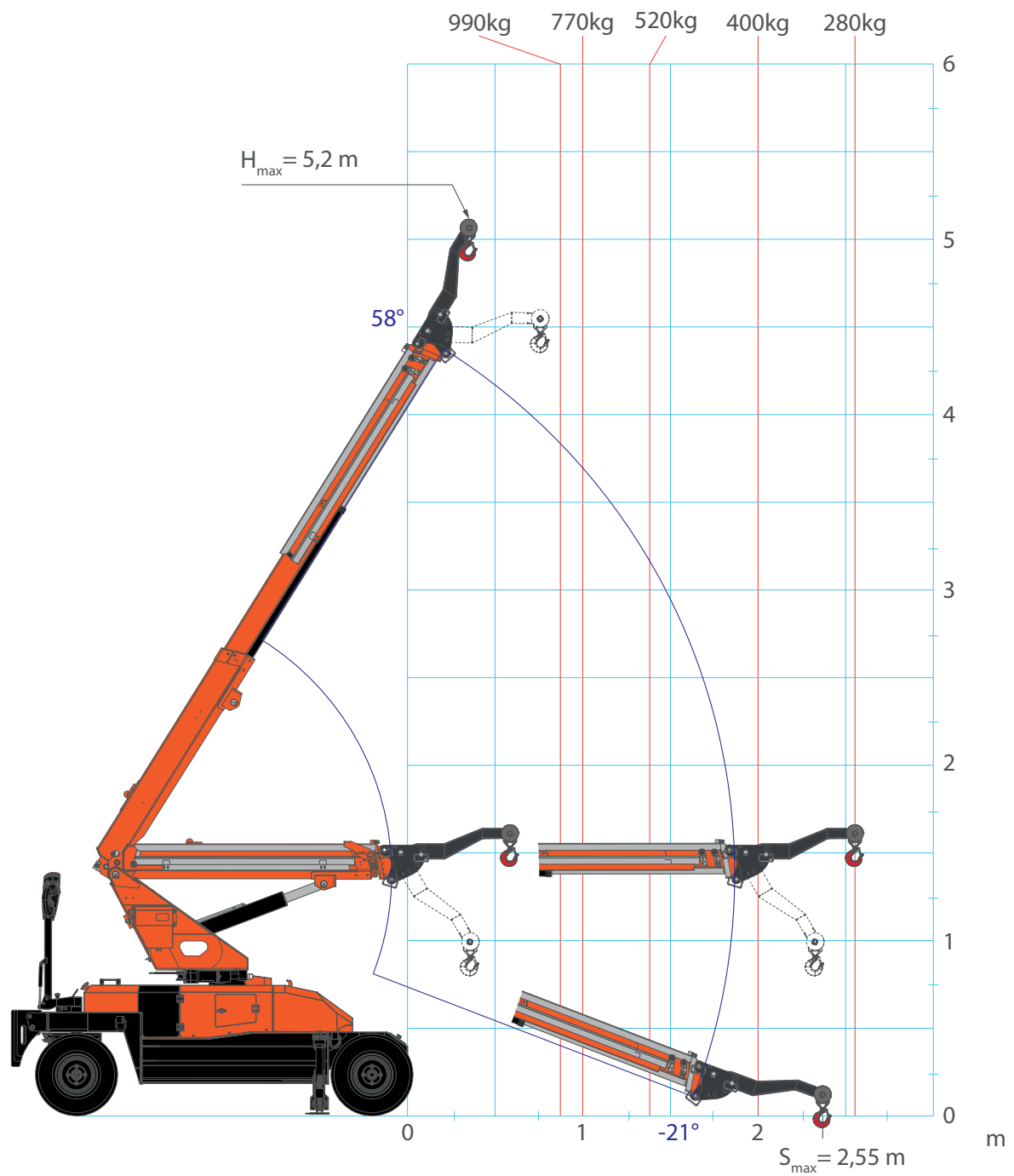
<sup>[3]</sup>: Max value only for short distance and a maximum of 30 seconds. Forward movement at maximum gradeability is intended with extended boom and without load.

<sup>[4]</sup>: Dry weight

## MAIN BOOM

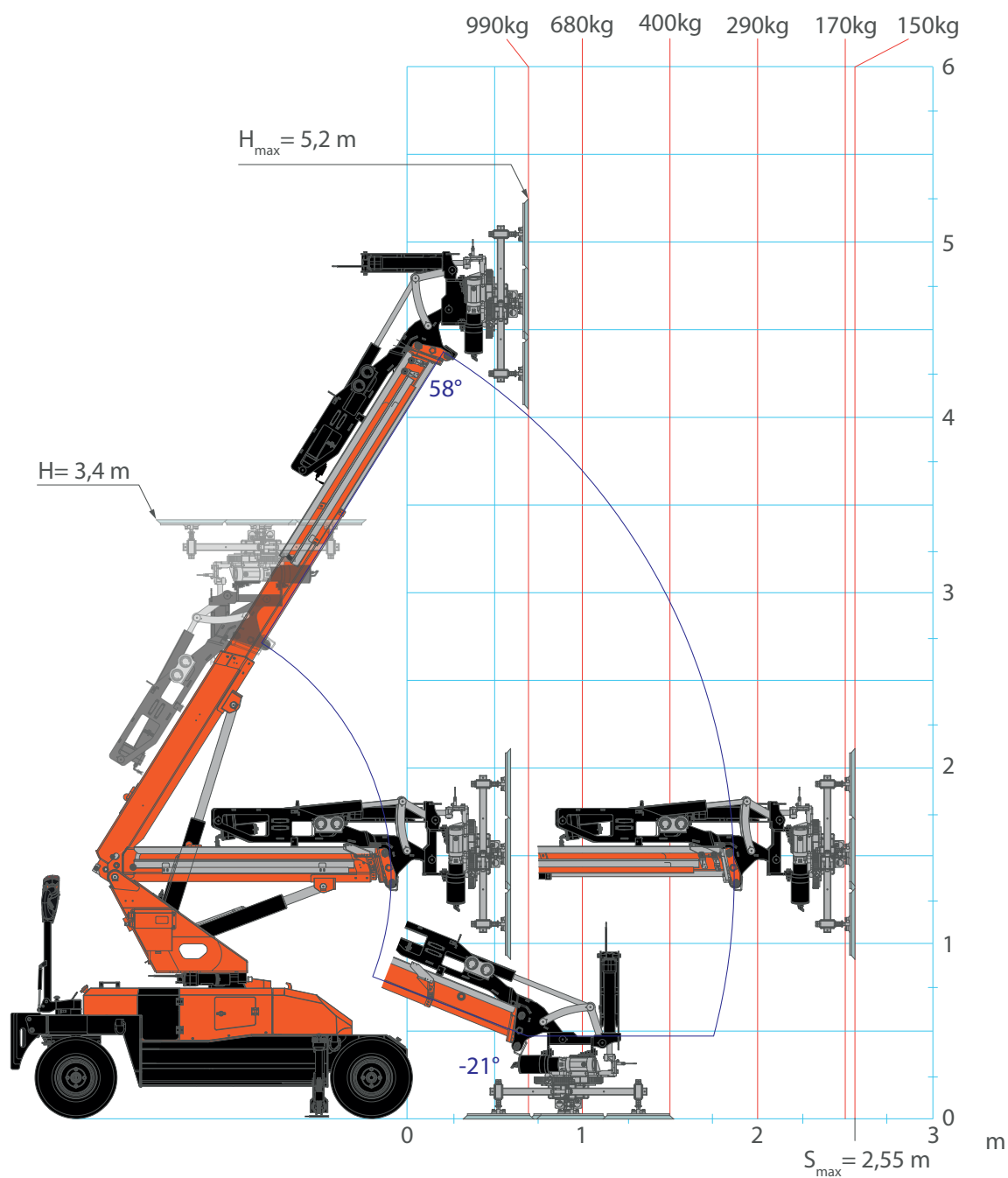


## JIB MPK10



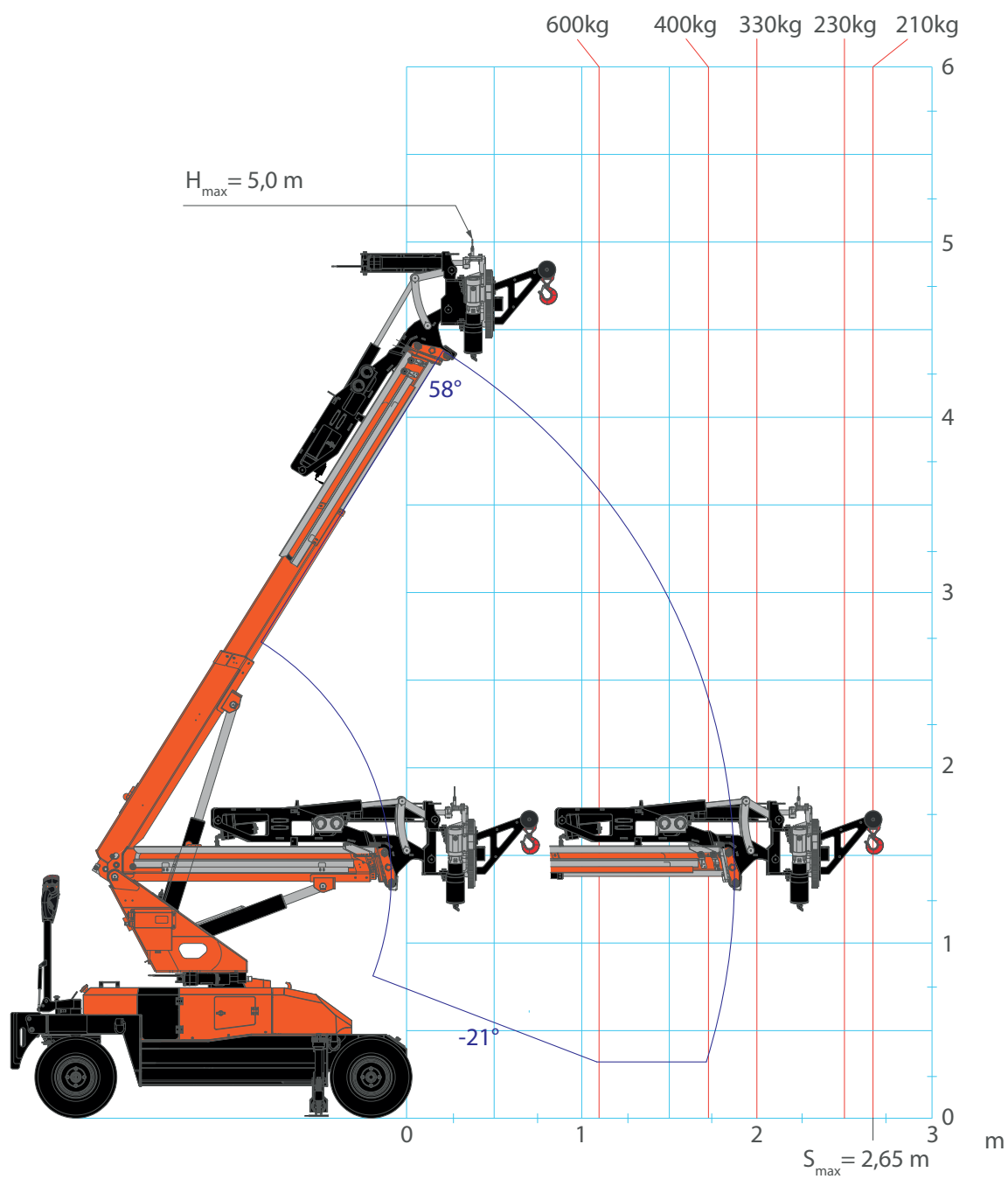
## JVM10.2

GLASS standard configuration (6 vacuum pads Ø400)



## JVM10.2

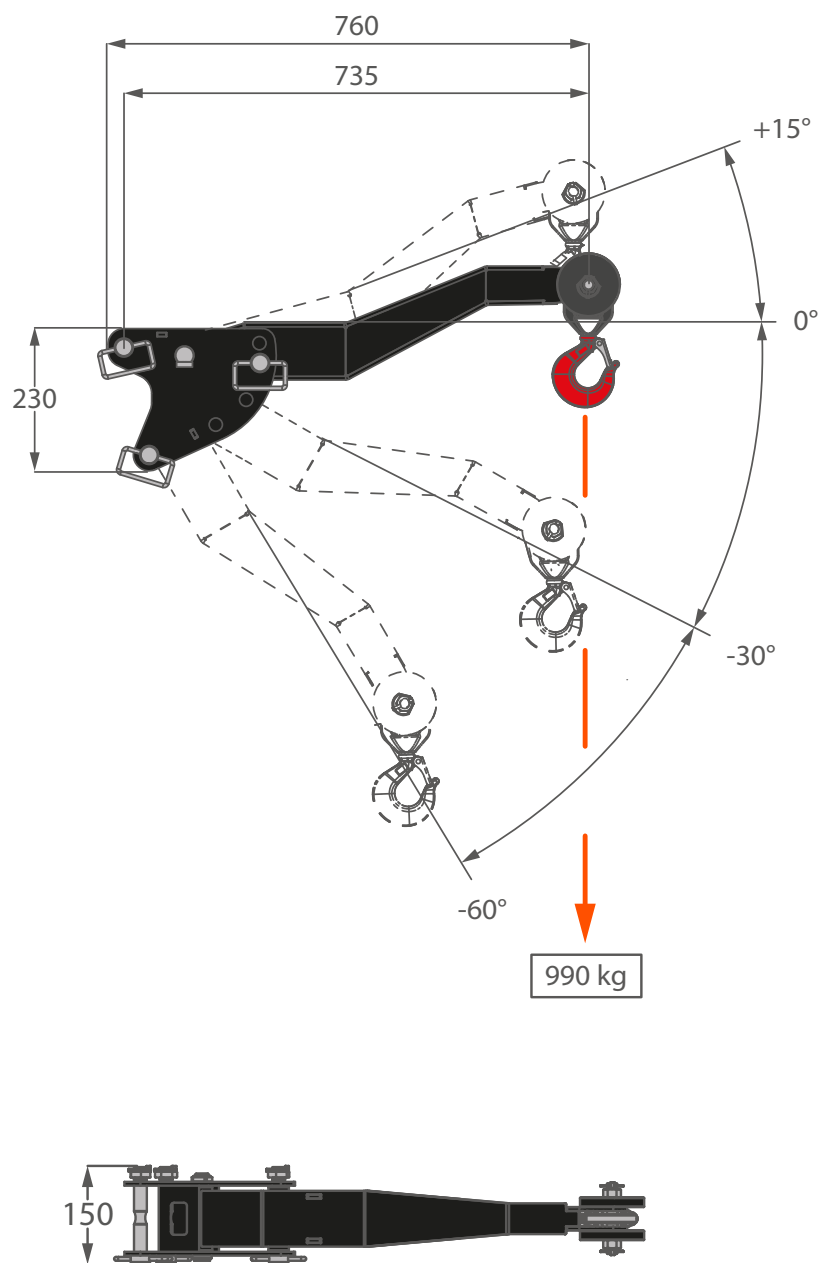
JIB-JVM06-10 configuration






## ACCESSORIES FEATURES

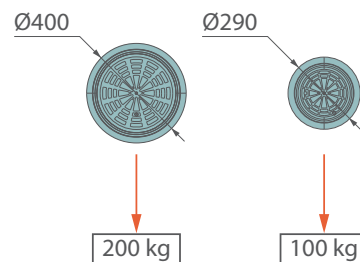
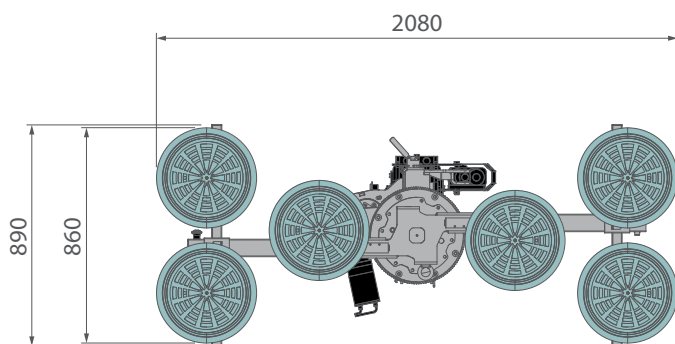
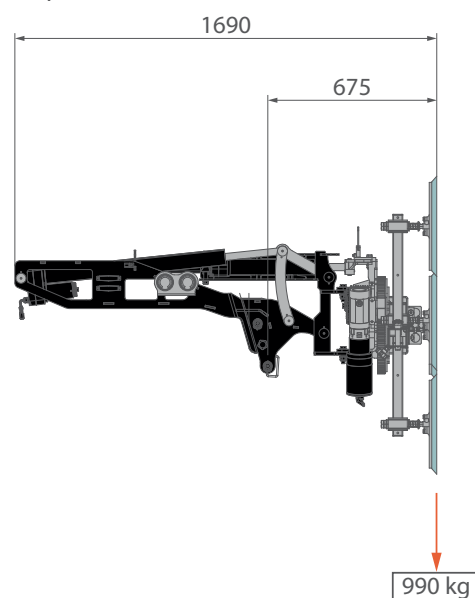
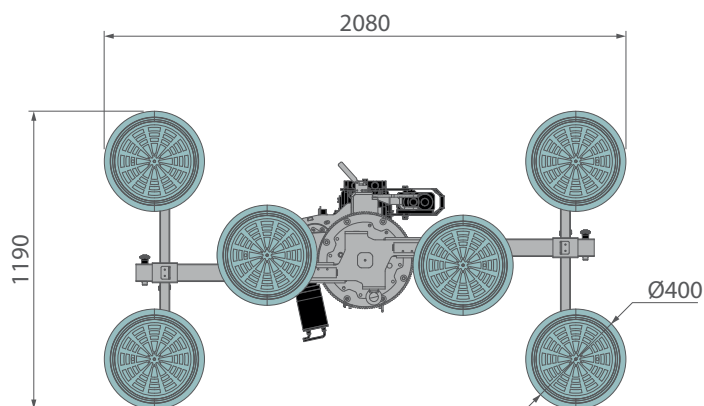
### JIB MPK10



	JIB	JIB-MPK10	kg	18
---	-----	-----------	----	----

## JVM10.2

GLASS standard configuration (6 vacuum pads Ø400)



	JVM	JVM10.2 (standard configuration)	kg	179
--	-----	----------------------------------	----	-----

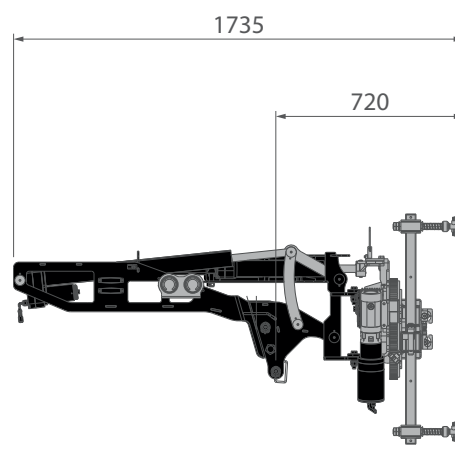
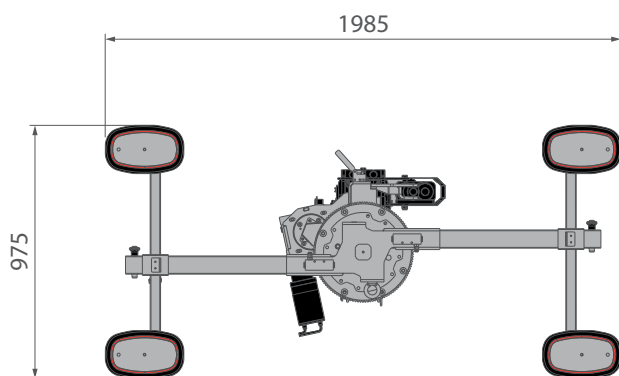
ACCESSORIES	Central pads support	kg	1
	Vertical pads support	kg	3,4
	Ø400 vacuum pad (x1)		4,8

OPTIONAL	Lateral pads extension	kg	4,4
	Ø290 vacuum pad (x1)		3,2

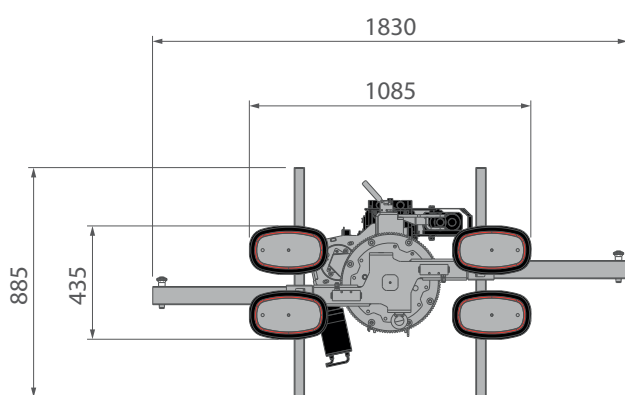
[mm]

## JVM10.2


MONOPANEL configuration (4 pads)



240 kg

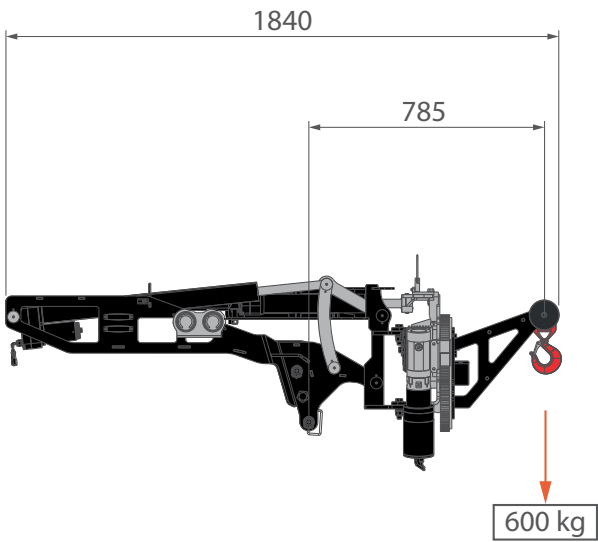
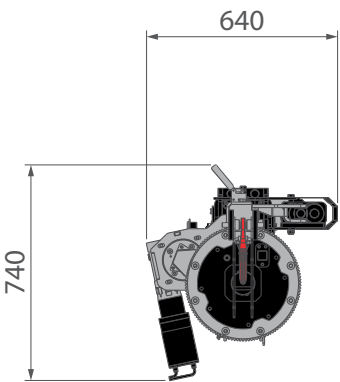



60 kg

	JVM	JVM10.2 (monopanel configuration)	kg	157
---	-----	-----------------------------------	----	-----

JVM10.2

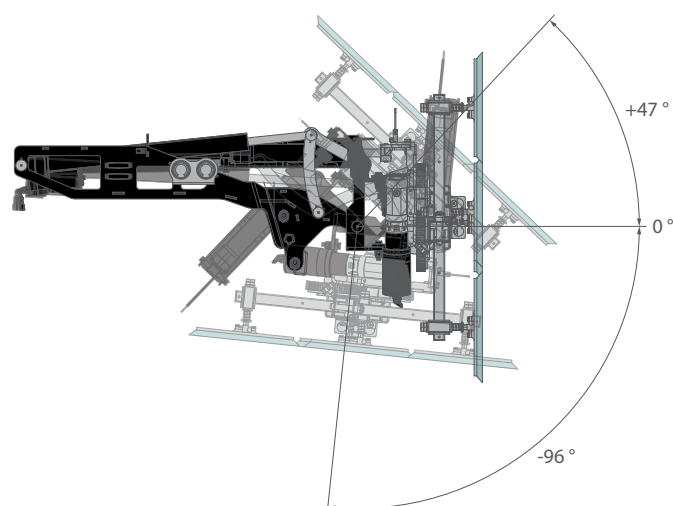
JIB-JVM06-10 configuration



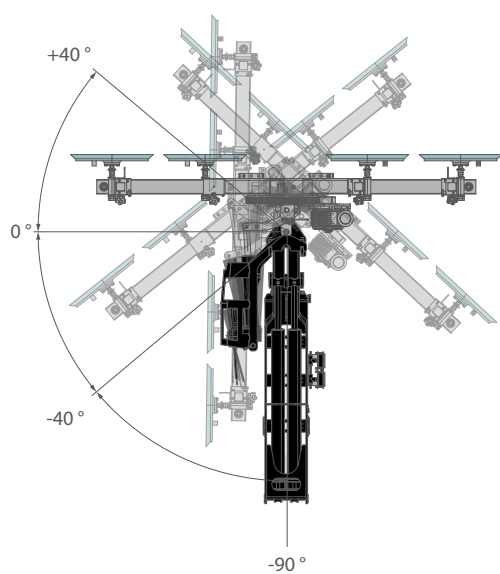
	JVM	JVM10.2 (JIB-JVM06-10 configuration)	kg	131
---	-----	--------------------------------------	----	-----

## JVM10.2

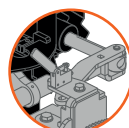
### TILT



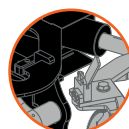
### SWING



CONFIGURATION 1

















CONFIGURATION 2



CONFIGURATION	ANGLE	
	min	max
1	-40°	+40°
2	-90°	-40°

## SYMBOLS

	Minipicker		Electric Engine		Boom Angle		Weight
	Travel Speed		Maximum Capacity		Boom Length		Rear Wheel Max Load
	Gradeability		Slewing		Jib		Front Wheel Max Load
	JVM Manipulator		Working Temperature				

### REMARKS REFERRING TO LOAD CHART

- Load tables have been calculated following the EN 13000:2014 standard.
- Load tables have been calculated considering a wind load of 13,8 m/s, a sail area of 1m<sup>2</sup>/t and a drag coefficient of 1,2.
- Load capacities are given in kg.
- Hookblocks and hooks weight is part of the load, hence it shall be deducted from the capacity values.
- The working radius is measured from the front plate of the frame.
- The supplied Technical Data is part of the Use & Maintenance Manual.
- Features and specifications may change without prior advice.
- All indicated data are for informational purposes only and are not binding as the crane performs differently depending on its use.