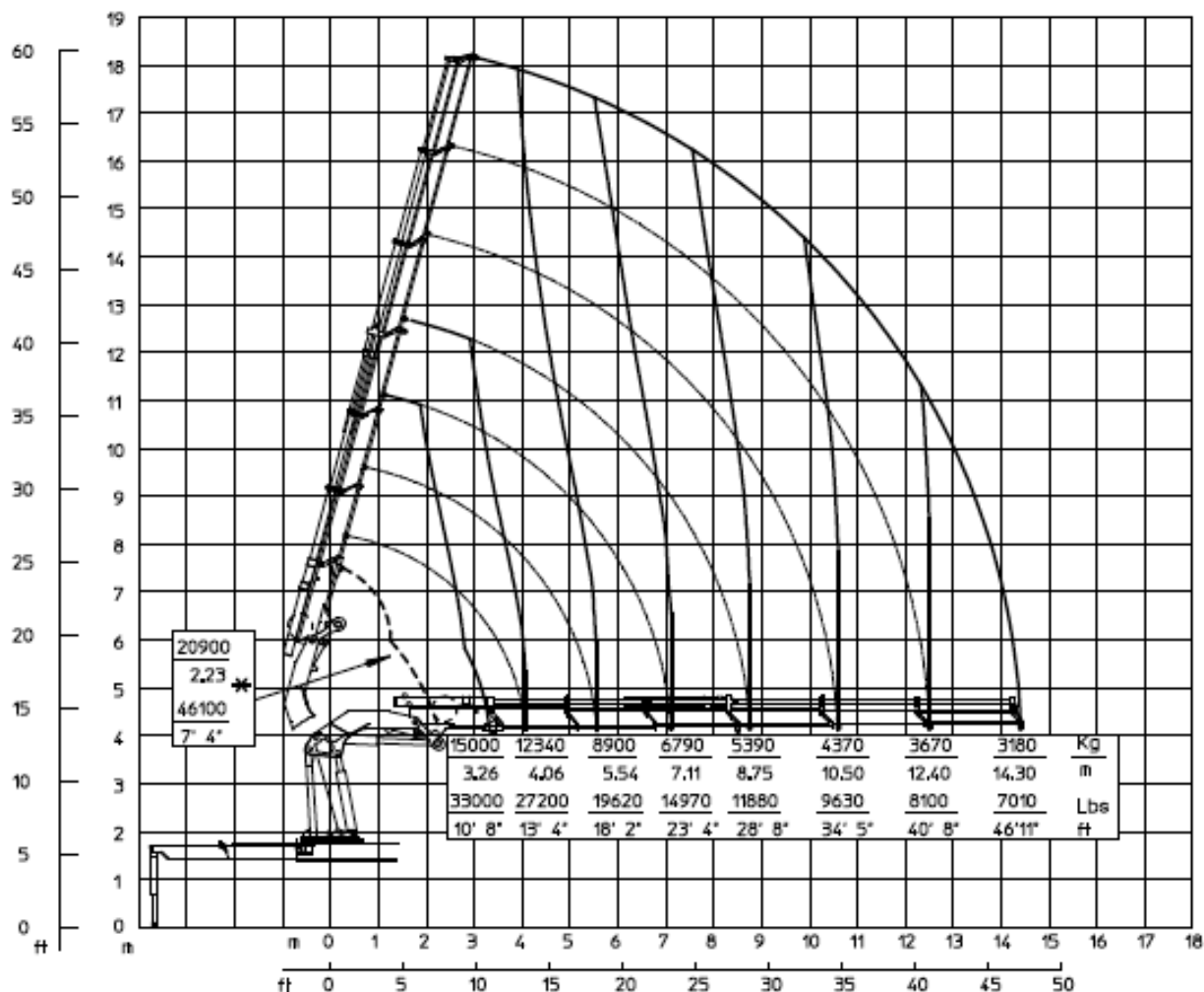


TABELLA DELLE PORTATE

CAMION GRU CORMACH 65000-E6F ASC




Capacità di sollevamento – 20 ton
Portata cassone – 10.930 Kg.
Lunghezza - 9,730 m.
Larghezza – 2,550 m.
Sfili – 6 (braccio base) + 2 (JIB) +2 (manuali)

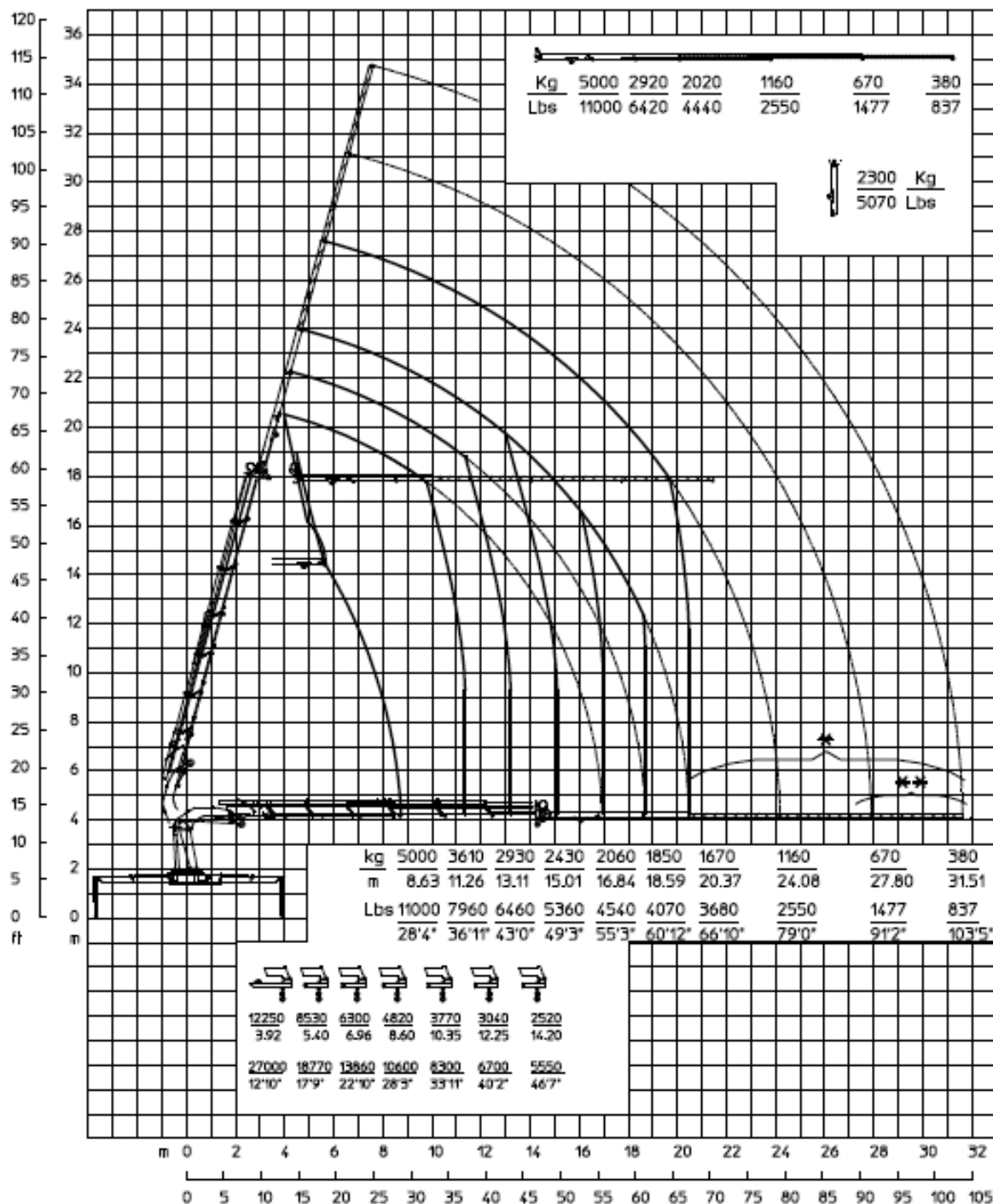


(*) GANCIO FISSO (OPZIONE)
(*) FIXED HOOK (OPTIONAL)
(*) CROCHET FIXE (OPTIONAL)
(*) FESTEM HAKEN (OPTIONAL)

(**) FORNIBILI SOLO IN PAESI EXTRA CEE
(**) AVAILABLES ONLY FOR COUNTRIES OUTSIDE EEC
(**) SEULEMENT POUR LE PAYS NON CEE
(**) LIEFERBAR AUSSERHALB DER EEC

I carichi sfilabili in verticale dipendono dall'angolo del braccio e dallo stato dei pattini.
The size of the loads that can be handled when extending the boom in vertical position are depending from the angle and the conditions of the wear pads.

PROLUNGHE MANUAL I	MANUAL EXTENSIONS	RALLONGES MANUELLES	MANUELLE VERLAENGERUNGEN	PROLONGAS MECANICAS		
m 12 13 14 15 16 17 18 19 20 21 22 23 24 25 26 27 28 29 30						
ft 40 45 50 55 60 65 70 75 80 85 90 95 100						
						
Kg	2680	2300	1700	1420	460	240
m	5900	5060	3747	3130	1014	529



- * Prolunghe manuali non rientranti fornibili in opzione.
- * Non-reentering manual extensions supplied as option.
- * Rallonges manuelles non rentrantes qui peuvent être fournies comme option.
- * Nicht einziehbarer Verlaengerungen (gegen Anfrage).

- (**) Fornibili solo in paesi extraCEE
- (**) Available only for countries outside EEC
- (**) Seulement pour le pays non CEE
- (**) Lieferbar Ausserhalb der EEC

I carichi stabili in verticale dipendono dall'angolo di inclinazione tra il JIB ed il braccio principale e dallo stato dei pattini.
The size of the loads that can be handled when extending the boom in vertical position are depending from the angle between the JIB and the main boom and the conditions of the wear pads.