

LEGACY INTO  
PROMISE



If the Church is the soul of The Redeemer,  
the Parish House is its heart.

The Redeemer Campaign for a Welcoming Campus

Church of the Redeemer needs a parish house  
that matches the vitality of our community, that  
facilitates the work we do here every day, and  
that reveals the truth that we are relevant,  
living and enduring



# Agenda

- Welcome – Peter Vanderveen
- Design Update – Ginger Woods
- Construction Update – Kyle Lissack  
– Timeline
- Capital Campaign Pledge Drive – Tad Sperry
- Budget – Jay Einspanier
- Relocation Plans – Jay Einspanier
- Communications – Ken Garner

# The Next Phase:

## Guiding Principles set by the Vestry

- Ensure that the activities and governance practices of The Redeemer are not disrupted during the construction process.
- Maintain a sharp focus on long-term growth and sustainability of the church in both numbers and spirit.
- Promote communication and engaging the parish in discussions regarding plans and priorities.
- Exercise diligent operational/financial oversight of fund raising, planning and execution



# Site Plan

# Proposed



Proposed Parish House - Site Plan  
**The Church of the Redeemer**  
 Bryn Mawr, Pennsylvania

John Milner Architects  
14 June 2015  
1/32" = 1'0"



## Proposed



# First Floor Plan

Proposed





# Section

## Entrance Hall





# Section

## Assembly Hall, Lobby & Kitchen



# Section

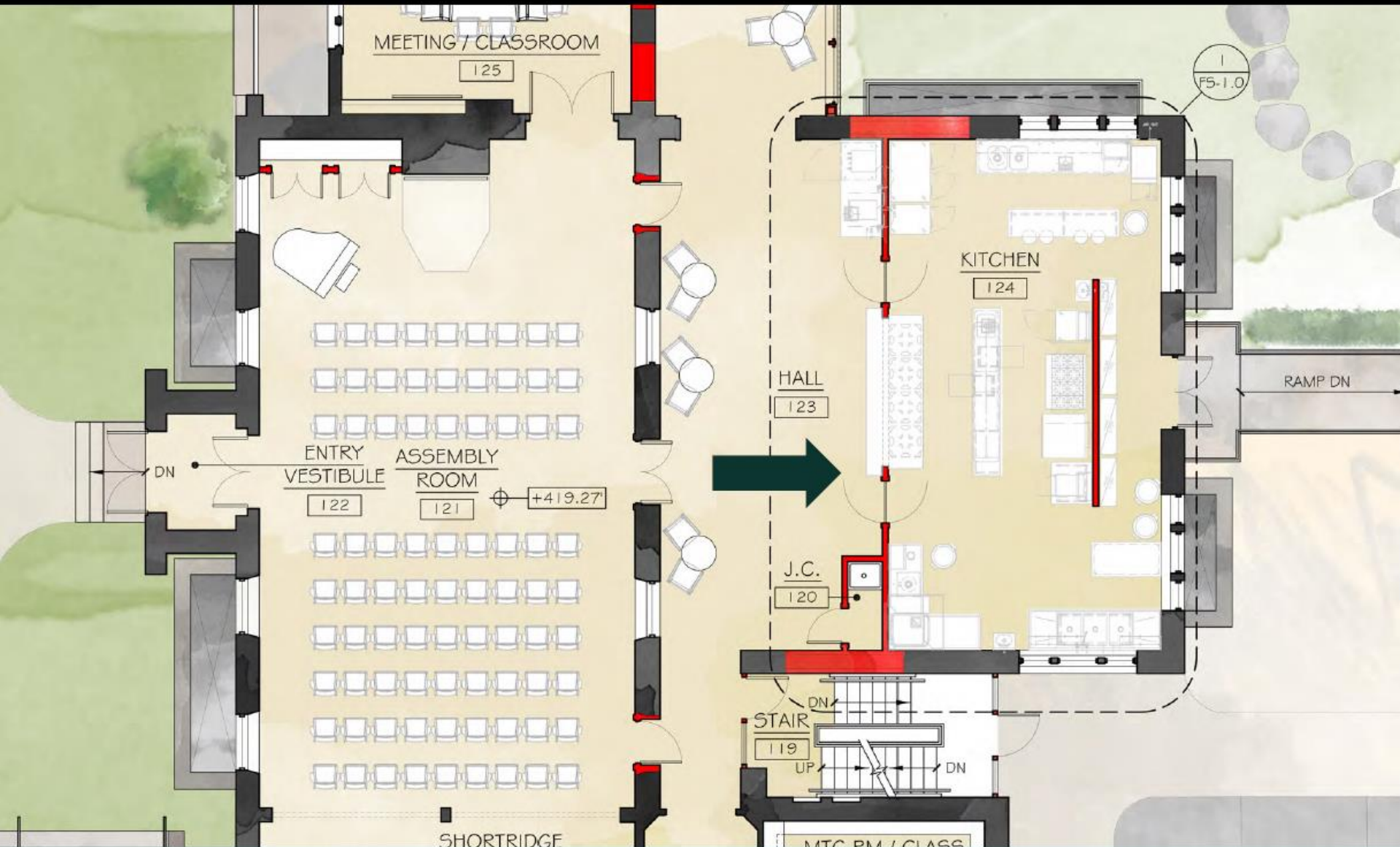
## Assembly Hall, Lobby & Kitchen





# Interior Elevations

## Assembly Hall, Lobby & Kitchen





# Proposed



## A1.0

# Basement Floor Plan

Proposed



## Second Floor Plan

# Proposed





# Second Floor Plan

Proposed







# Aerial Views

Looking North











# Aerial Views

Looking North





# Elevations

East



# Aerial Views

Looking West





# Elevations

North





# Aerial Views

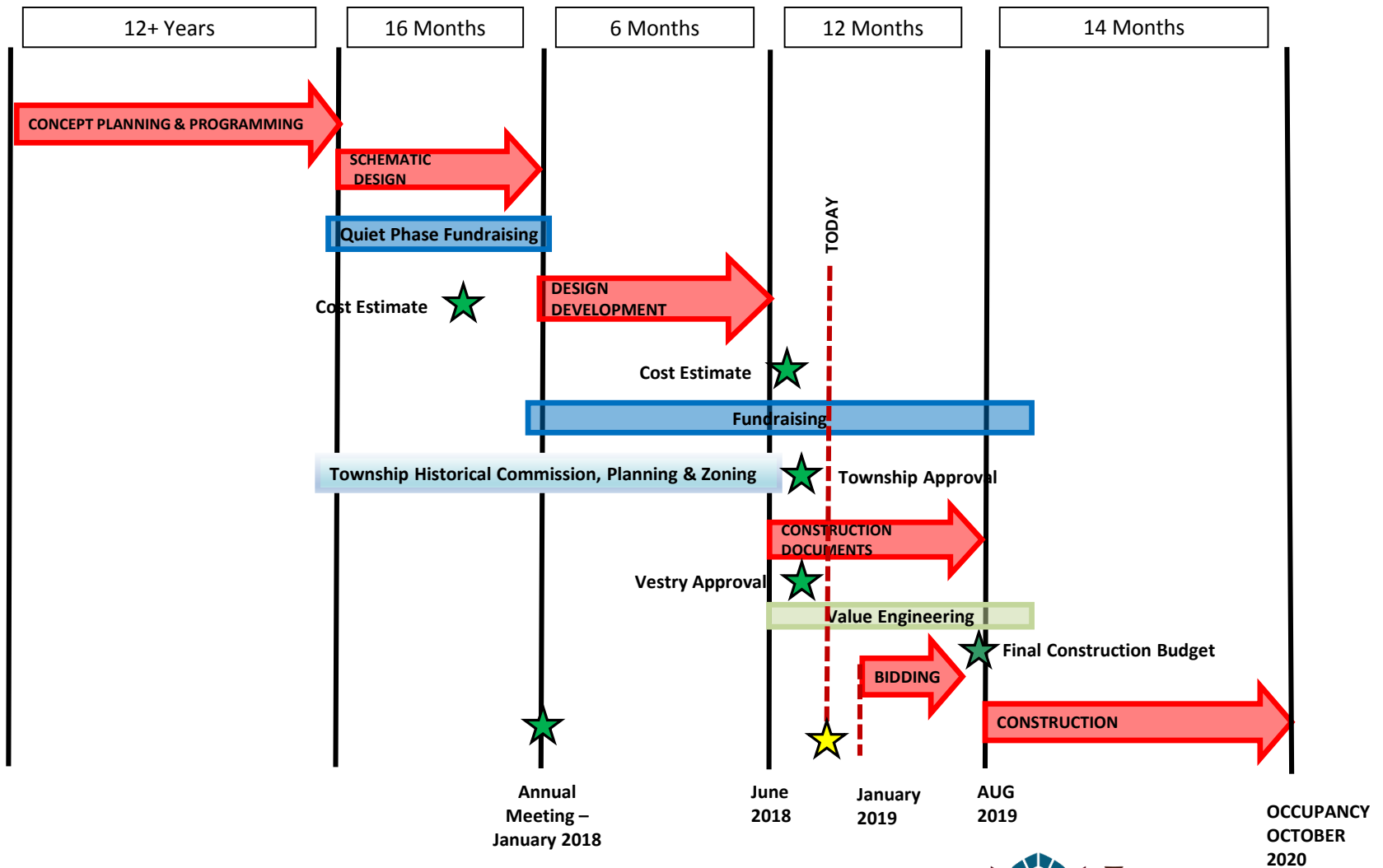
Looking East



# Next Steps

- Design Development Complete
- Coordination continues between Architect and Consultants in preparation of Construction Documents and Value Management
  - Interior Design
  - Professional Kitchen Design
  - Lighting Design
  - Civil Engineering/Site Plan/Landscaping
  - Signage, Graphics and Wayfinding
  - AV Technology
  - Building Security

# LEGACY INTO PROMISE MILESTONES





# The Home Stretch



Please welcome your fellow  
parishioners' solicitation call.  
Our quiet campaign got us to  
85% of our \$14M Total Goal.

(114 Pledges)  
Now it's your turn.

*as of October 24*

103 Pledges  
\$950,631

63%

## \$1.5M

**Full Participation Phase Goal**  
Since February 2018

NEW DESIGN

LEGACY INTO  
PROMISE



With your pledge and contribution, we will:  
open the doors to our new Parish House sooner, at lesser total cost,  
providing greater endowment for future years.

\$0 ..... ➔ ..... \$1.5M

# Construction Budget

- \$9M Construction Budget
  - Based on 2 reconciled schematic estimates and Design/Development Plans
  - Escalation based on starting in Q3 of 2019
- \$3M Other Construction Costs
  - Professional Fees
  - Hazardous Material Abatement
  - Construction Contingencies
  - Fixtures, Furnishings & Equipment
  - Moving and Temporary Facility Costs
- \$12M Total Project Costs

# Relocation Committee and Process

## **June - October 2018:**

- Coordinate with Township and complete specifications, design, budget for temporary space
- Identify materials for storage and relocation

## **October 2018 - April 2019:**

- Bidding of relocation storage efforts
- Selection of temporary space provider

## **January - June 2019 :**

- Cleansing of unneeded materials, pack up and storage of essentials

## **July 2019:**

- Complete transfer of all necessary equipment and materials and staff to temporary space. Install of temporary meeting space.

## **August 2019:**

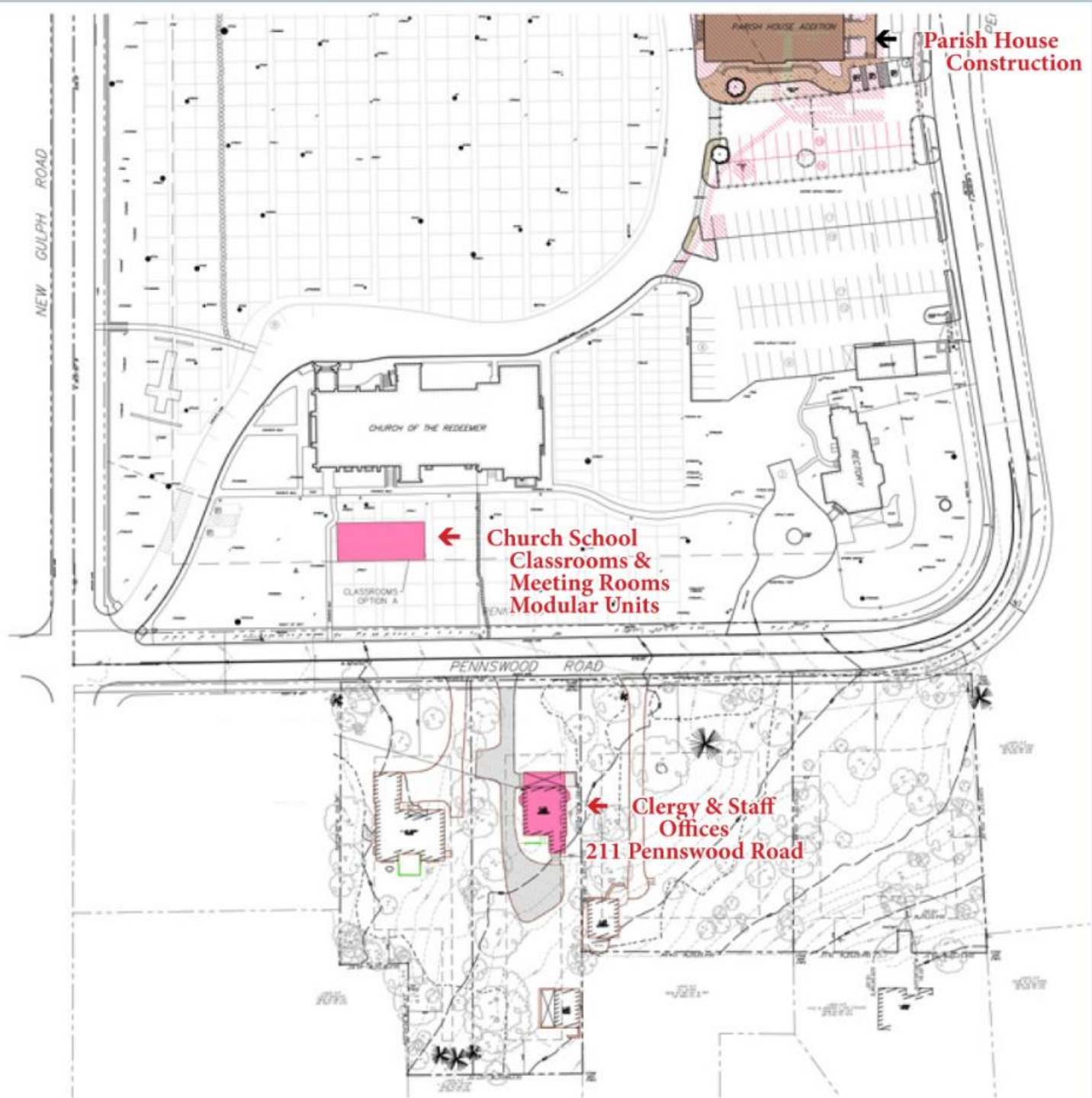
- Turn over Parish House to Contractor

## **October 2020:**

- Relocate to new Parish House







# Communications

- News from the Redeemer
- Weekly ENews
- Voice of The Redeemer
- [www.TheRedeemer.org](http://www.TheRedeemer.org)
- Campus video screens

LEGACY INTO  
PROMISE



If the Church is the soul of The Redeemer,  
the Parish House is its heart.

The Redeemer Campaign for a Welcoming Campus



# Legacy Into Promise Operating Committee

Babs Camerota, Chair

Peter Vanderveen, Rector

Ken Garner - Communications

Tad Sperry - Campaign Gifts

Ginger Woods/Betsy Crowell - Design  
Development

Kyle Lissack/Bob Nalls - Construction

Mackie MacLean/Jay Einspanier - Finance

