

Grace Evangelical Lutheran Church

204 North Main Street Columbia City, IN 46725-2191

Phone 260-244-7118 Fax 260-248-2138

E-mail: office.gracelutheran@gmail.com

Website: www.gracecolumbiacity.org



Newsletter E-mail: newsletter.gracelutheran@gmail.com

May 2026 Newsletter

January 12, 2026 Council Meeting Minutes

Present- Paster Matt Converse, Joe Freiburger, Maelynn Fries, Deena Hart, Mark Krider, Paul Marken, Sarah Pearl

Absent - Linda Grawcock, Bill Owen

Meeting was called to order at 6:39 pm by President Joe Freiburger

Devotional: Pastor led devotions from 1 Cor 1:10-18. This is the passage where Paul talks about not baptizing many people, and that his job was to proclaim the gospel. Paul emphasizes here that it doesn't matter who baptized you, or what faction you are part of. What matters is that we follow Christ.

Minutes from December were reviewed and approved as submitted.

Pastors Report: Pastor gave a verbal overview of his written report. Presently he has two confirmation classes recorded. We may use one as the next council devotion.

Treasurers Report: Deena gave a summary of the December treasurer's reports. The report was approved subject to audit.

Old Business:

A) Confirmation class. Covered in Pastor's report.

B) Midweek advent service went well. We want to do this again. It was suggested we do something similar during lent. It was decided to try March 10 th for a midweek Lenten service

and carry in. (The preschool fish fry will be March 18 th .)

C) Bread Loaf Offering. Joe went over his plans for the bread loaf offering. There were no suggestions for changes to the plan.

D) Church Council Membership. Branson and Morgan need to take a step back for now. Brent

Whiteleather is interested in being on council. Beth Moss is also excited about the possibility of serving on council. These will be the two nominations from Council. It will be easiest to make both of their terms 3-year terms.

New Business:

A) Congregational Meeting will now be January 25 th . This is to accommodate east wall repairs. The church will provide chicken at the carry-in. The amount of chicken compared to last year will be reduced as we had a lot leftover. Team reports need to be turned in by the end of this week.

B) Game Night might move to March. Maelynn will contact Marsha and find out what she is planning.

Team Reports:

Property – Mark. Mark gave a verbal overview of his written report. The women’s restroom has been cleaned and repainted and looks good. Door #3 has a broken latch. It is presently blocked shut. To replace the existing mechanism will cost \$1,100. Updating the crash bar would cost \$400. Mark will get an updated crash bar. In the meanwhile, the exit signs that point toward this door will be covered.

Food Pantry – Joe. No written report this month. This past week the pantry was overwhelmed with lots of people coming in. The pantry has received a lot of food collections. The storage room is currently full. Beth has been continuing with blood pressure checks and gave a report to council.

Fellowship –Mark. Tenderloin dinner is coming up. Should this be all you can eat or not? The consensus was no. We will continue with one tenderloin with the meal with an option to buy a two tenderloin meal. Other meal options were reviewed including side dishes.

Worship and Music – Paul. Bells played at the Christmas Eve early service and received many compliments. Paul has investigated what it would take set the bell tables ‘permanently’ in the front. It appears with two more pews removed there would be room for both the bell choir and the rejoice choir. Paul encouraged council members to consider what is the best use of our large nave area. The pews make it very inflexible. There really isn’t a place to store pews that are removed. Should we create space for wheelchairs? Should a strategic pew or two be changed to chairs? A review of our Christmas Eve services shows we had about even attendance between the two services All of the children seem to have come to the late service. The early service had most of our regulars while the late service had people we see less often (Christmas and Easter), as well as some visitors and preschool families.

Christian Ed – Linda. Nothing to report.

Stewardship – Linda. Nothing to report.

Permanent Endowment – Paul. Nothing to report at this time.

Altar Guild – Maelynn. New communion record sheets are being made. We are now able to handle corked wine. We had wine with corks but no corkscrews or bottle stoppers. This has been rectified.

Staff Support – Sarah. Nothing further to report.

Preschool – Council reviewed Kirsten’s written report.

Meeting adjourned at 8:22 pm with the Lord’s Prayer.

Minutes prepared by Paul E. Marken. 1/15/26

Bread Loaf Offering

The Bread Loaf Offering for May is going to The Center in Columbia City. The funds collected will be going towards the youth program.

Thank you for last month's donations to the Synod Disaster Relief Fund.

First Fridays

The first Friday this year falls on May 1st. We will be located in booth 167. This is right across the street from the US Post Office.

This month's theme is Touch a Truck and the Launchpad. Time is from 6pm to 9pm. We will be in the same spot all summer long. So come out and grab a balloon.

Church Council Synod Meeting

The ELCA Synod meeting will be June 6th. This will be an online meeting so you can do it from home in your PJ's if you wish. We need one female and one male to attend from our congregation. There is a fee which will be paid by the church. Please see Pastor Matt if you can help fill this obligation.

Grace Lutheran Church Preschool



MAY



Kids Dreamland Continued...

Please make sure you pack a lunch for you and your child. Yes, siblings are welcome to join us for our picnic. If you have any other questions please let me know!

Graduation and End of Year Celebration

T/ Th classes, End of the Year Celebration will be in the evening May 19th at 6:00 pm.

MWF ½ Day classes, Graduation will be in the evening of May 20th at 6:00pm.

MWF All Day class, Graduation will be in the evening of May 21st at 6:00pm

I am asking that students please be here at 5:45 pm. We will meet in the room where we greet students at in the mornings.

Graduation and End of Year Celebration Continued...

All are welcome to come to the Graduation and End of Year Celebration Programs which will be in the Sanctuary. We will have refreshments after the Program in the Fellowship Hall. **FORMAL INVITATION TO COME!!** If you have any questions, please let me know.

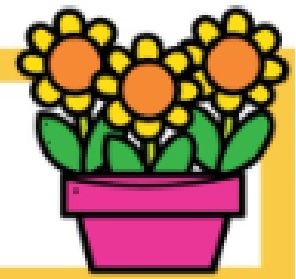
VOLUNTEERS AND SUPPLIES NEEDED

We will be creating a list of supplies needed for End of Year Celebration and Graduation days. We will send out a Signup Genius in the next couple of days asking for donations. So please be on the lookout for that. Also we will need volunteers for each class to help with Field Day to run a station. Please let me know if you are able to volunteer.

Grace Lutheran Church Preschool



MAY



Where we've been...

We began reading books about butterflies and weather. We talked about the life cycle of a butterfly. We talked about the different types of weather. We worked on the letters Ww and Kk, number 10 and reviewed all our shapes.

Where we're headed...

I can't believe we are already in our last month of school. We have had such a great and busy year! This last month we will be reviewing all the letters, numbers and shapes. We are getting ready for End of the Year Celebration and Graduations.

Important Dates...

May 15th- No School- Professional Development for Teachers
May 18th & 19th- Field Days (last Reg. Day of School)
May 19- End of Year Celebration at 6:00 pm- T/ Th Classes
May 20th & 21st- Picnic at Kid's Dreamland- 11:30 pm- 1 pm- class will be combined
May 20th- Graduation at 6:00 pm- MWF ½ Day Classes
May 21- Graduation at 6:00 pm- MWF All Day Class

Kids' Dreamland

The last full, normal day of school will be May 18th & 19th. However, the last days we get to be together are May 20th & 21st at Kids' Dreamland. MWF AM, MWF PM and All Day classes will join together on the 20th for a picnic at Kids' Dreamland. The T/TH AM and PM classes will meet on the 21st at Kid's Dreamland. For both days please gather together at 11:30 at the park and enjoy a picnic lunch. Ms. Mariah, Mrs. Beck and I will be there until 1:00 to chat, eat and hang out.

Bread Loaf Offering 2026

We will continue the same format for bread Loaf Offerings that we have been doing for the last 2 years. On the first Sunday of the month, we will announce which organization will benefit from the offering. We will be passing around 2 Bread Loaf Baskets. The following Sundays, the Bread Loaf basket will be in the Narthex next to the collection plate. Here is a list of the recipients that will receive the Bread Loaf offering each month. If you have any questions, please feel free to reach out to Joe Freiburger, Pastor or any other church council member, Thank You for all your support and donations.

Joe Freiburger

January- Whitley County Ministerial Association (Energy Assistance) c/o Craig Allen Myers 169 E 600 S-57 Churubusco In. 46723

February- Campus Ministries

March- Gafkjen Endowment Fund

April- Synod Disaster Relief Response

May- The Center

June- Gideons

July- Babe

August- Lutheran Senior Care Ministries

September- Grace Lutheran Preschool

October- Fire Fighters Christmas Candy Handout

November- Mission 25 Giving Tree

December- Grace Lutheran Food Pantry

INDIANA-KENTUCKY SYNOD YOUTH MISSION TRIP

June 14–20, 2026 | Indianapolis, Indiana

Get ready for a week of service, growth, and unforgettable experiences in Indianapolis! Youth and adult mentors will spend the week serving alongside inspiring local ministries and nonprofit organizations, putting faith into action through meaningful, hands-on opportunities to love and serve our neighbors.

This mission trip will be a chance to make a real difference, build new friendships, deepen faith, and discover more about what it means to follow Jesus in everyday life. Along the way, participants will also enjoy evening activities that highlight the culture, energy, and diversity of Indiana's largest city.

Pilgrim Lutheran Church in Carmel will serve as host site for the week.

This trip is open to students in grades 7–12 and adult mentors.

Cost: \$250 per person

The cost is all-inclusive except for travel to Indianapolis. Scholarships are available.

Come be part of a week that will challenge you, inspire you, and remind you that God can use every one of us to make a difference.

For more information, contact Pastor Dan

Fugate at pastordan@pilgrimcarmel.org or (317) 846-2221.

Prayer Request

If someone you know needs some extra prayers through a hard time or sickness, please email the office at Prayers.gracelutheran@gmail.com

Or you can call someone on the Care Team:

Jane Straub: 260-229-1118

Linda Trowbridge 260-229-1815

Linda Grawcock 260-609-5037

Ann Wolfe 260-609-5920

Sandy Whiteleather 260-503-4281

Beth Moss-239-293-5238

Lois Noel, Hope. 260-403-1395

Join us for fellowship hour immediately following the service.

THANK YOU

to all the wonderful people who donated their time and yummy treats each week!!!

Important Email addresses

Church business and bulletin items:

Office.gracelutheran@gmail.com

Newsletter articles (due by the 21th of the month):

Newsletter.gracelutheran@gmail.com

Prayer Chain requests:

prayers.gracelutheran@gmail.com

Food Pantry needs this month : Cereal

Also food pantry needs Plastic bags (Walmart, Kroger's, ect) and Egg cartons.

Purpose statement: Empowered by Jesus to participate in God's work with our community.

Guiding Principles:

- Always growing Relationships with God, one another, and the world
- God is at work in the world and we get to participate
- Trusting that God equips us, we understand and serve the needs of our community and world
- Music and worship are expressions of the Holy Spirit in this place.
- Each one has something to contribute
- All are on a journey, still traveling and searching
- We can walk arm in arm without seeing eye to eye



Adelphi Group met on Tuesday, April 21st. Eleven members were present plus two guests. The “Doxology” was sung and lunch was served. Salads, fruit, deviled eggs and two desserts were provided.

Following the meal Sarah and Becky from “The Clothing Closet at Bridge of Hope” spoke about the ministry of New Hope Wesleyan Church. Check out the W E L C A bulletin board for more information.

Our May meeting is being canceled. We will meet June 23 at Grace with Bill Owen telling the ladies about his Maple Syrup farm & sampling his special syrup.

Save the dates: Adelphi ladies are in charge of the Pork Chop dinner July 19. If you would like to volunteer let Linda Trowbridge know.

Grace garage sale will be August 6-8. Start cleaning out your closets.

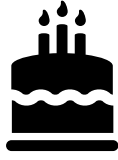
Looking to June, Bill Owen will join us to tell about his “Maple Acres Syrup.” With Maple Syrup you have to have pancakes!!

A Garage Sale is planned for August 6, 7 and 1/2 day on the 8th. More information to come.

In other business it was voted to send \$100 to “The Clothing Closet” to help with their mission to provide clothes to those in need.

Also Donna Darstein told about needs at Mission 25. Pillow cases, bed pillows, men’s hygiene products, clear fabric softener and dishwasher pods are items that can be donated at anytime at Mission 25 on Connection Way. There will be no meetings in July (4-H Fair) and August (Garage Sale).

Please plan to join us for fun, informative meetings and help with ministries wherever needed.



May Birthdays



Birthdays

SMITH, Sandra	05/03
DRIVER, Sylvia	05/05
ERICKSON, Kent	05/05
HEUER, Megan	05/06
ELLIOTT, Patricia	05/07
FREIBURGER, Nancy	05/13
HART, Mace	05/13
HARTER, Seth	05/16
HARTER, Thadius	05/16
KITSON, Michele	05/16
MYERS, Monique	05/17
COX, Keith	05/18
FREEWALT, Jerry	05/18
BRUBAKER, Kari	05/20
BOCKELMAN, Nataley	05/21
KNAFEL, Janet	05/22
WILCOXSON, Shari	05/22
DRIVER, Ellie	05/24
FREEWALT, Rob	05/25
HIVELY, Gary	05/25
LEININGER, Jeanne	05/28
SAMUELS, Penny	05/29

1st Sunday-Sunday School

1st Sunday- BP Check

2nd Sunday- Confirmation

3rd Sunday- Sunday school

4th Sunday- Adult Sunday school

Grace Evangelical Lutheran Church Christian Holidays, Holidays in United States

May 2026 (Eastern Time - New York)

Sun	Mon	Tue	Wed	Thu	Fri	Sat
26 8:15am - Worship Service 10am - Worship Service 11:15am - Fellowship	27 12:30pm - Helping Hands 6:30pm - Scouts America 6:30pm - Scouts America 7:30pm - AA	28 9am - T.O.P.S. 3:40pm - Staff Meetings 4pm - Whitley County 6:30pm - Cub Scouts 3082	29 8am - Men's Breakfast 12pm - Food Pantry 4pm - Voucher	30 7:30pm - AA 7:30pm - Al-anon	1 Pastor's Day Off 12pm - Food pantry 5pm - Girl Scout Lockin	2 12am - Girl Scout Lockin
3 8:15am - Worship Service 10am - Worship Service 11:15am - Blood Pressure 11:15am - Fellowship 2pm - Girl scouts	4 12:30pm - Helping Hands 6:30pm - Property Team 6:30pm - Scouts America 6:30pm - Scouts America 7:30pm - AA	5 Cinco de Mayo 9am - T.O.P.S. 3:40pm - Staff Meetings 6:30pm - Cub Scouts 3082	6 8am - Men's Breakfast 10:20am - Pre-k chapel 11am - Pre-k chapel 12pm - Food Pantry 12:40pm - Pre-k chapel	7 7:30pm - AA 7:30pm - Al-anon	8 Pastor's Day Off 12pm - Food pantry	9
10 Mother's Day 8:15am - Worship Service 10am - Worship Service 11:15am - Fellowship 1pm - Worship @Oakes	11 12:30pm - Helping Hands 5:30pm - Financial Team 6:30pm - Church Council 6:30pm - Scouts America 6:30pm - Scouts America	12 9am - T.O.P.S. 3:40pm - Staff Meetings 6:30pm - Cub Scouts 3082 6:30pm - Sigma Eta	13 8am - Men's Breakfast 12pm - Food Pantry 4pm - Voucher	14 Ascension Day 7:30pm - AA 7:30pm - Al-anon	15 Pastor's Day Off pre-k development day 12pm - Food pantry	16
17 8:15am - Worship Service 10am - Worship Service 11:15am - Fellowship 11:15am - Sunday School 2pm - girl scouts	18 12:30pm - Helping Hands 6:30pm - Scouts America 6:30pm - Scouts America 7:30pm - AA	19 9am - T.O.P.S. 10:30am - Care Team 11:30am - Adelphai Group 3:40pm - Staff Meetings 6pm - Pre-k Graduation	20 8am - Men's Breakfast 11:30am - pre-k Picnic 12pm - Food Pantry 4pm - Voucher 6pm - Pre-k Graduation	21 11:30am - pre-k picnic 6pm - Pre-k Graduation 7:30pm - AA 7:30pm - Al-anon	22 Pastor's Day Off 12pm - Food pantry	23
24 Pentecost 10am - Worship Service 11:15am - Fellowship	25 Memorial Day Whit Monday 12:30pm - Helping Hands 6:30pm - Scouts America 6:30pm - Scouts America	26 9am - T.O.P.S. 3:40pm - Staff Meetings 4pm - Whitley County 6:30pm - Cub Scouts 3082	27 8am - Men's Breakfast 12pm - Food Pantry 4pm - Voucher	28 Last Day WCCS 7:30pm - AA 7:30pm - Al-anon	29 Pastor's Day Off 12pm - Food pantry	30
31 Trinity Sunday 8:15am - Worship Service 10am - Worship Service 11:15am - Fellowship	1 12:30pm - Helping Hands 6:30pm - Property Team 6:30pm - Scouts America 6:30pm - Scouts America 7:30pm - AA	2 9am - T.O.P.S. 3:40pm - Staff Meetings 6:30pm - Cub Scouts 3082	3 8am - Men's Breakfast 12pm - Food Pantry 4pm - Voucher	4 Corpus Christi 7:30pm - AA 7:30pm - Al-anon	5 Pastor's Day Off 12pm - Food pantry	6

Worship At Hope Sundays at 8:15am
Worship with Holy Communion at Grace
Sundays at 10am

LIVE on Facebook:
www.facebook.com/gracelutherancolumbiacity

Upcoming Important dates...

May 24 combine at Grace 10 am