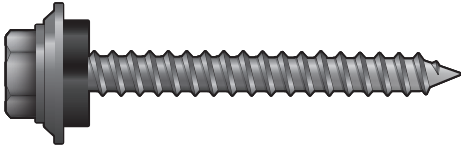


Fastener Accessories



#10 Woodzip Fastener

Features a thick bonded E.P.D.M washer for weather tight seal

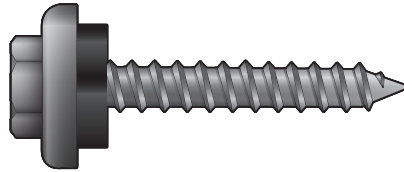
Metal to wood applications

AVAILABLE IN: 1", 1-1/2", 2", 2-1/2", 3"

Full DMG85 coating for corrosion resistance

TP-17 point reduces penetration shavings

Packaged 250 pieces per bag



Premium #12 Warranted Woodscrew

Long life stainless steel with 20 year warranty

Metal to wood applications

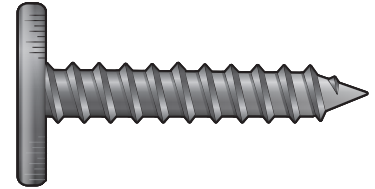
AVAILABLE IN: 1", 1-1/2", 2", 2-1/2", 3"

Packaged 250 pieces per bag

Large diameter for extra holding power

Available in standard colors to match panels

More back-out resistance than standard #9 diameter fasteners



#12 Pancake XG Type "A"

With flat head for use with standing seam concealed panel applications

More back-out resistance than #10 fasteners

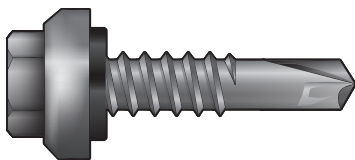
Concealed panel to wood applications

AVAILABLE IN: 1", 1-1/2", 2"

Phillips drive

Extra holding power and zinc plating

Packaged 250 pieces or 2,500 pieces per bag



Premium #12 Warranted Self-Drilling Fasteners

Long life stainless steel with 20 year warranty

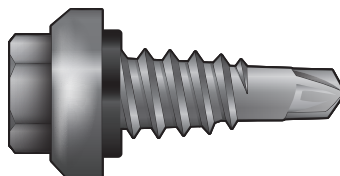
Metal to metal applications up to 8 gage

Coated for corrosion resistance

AVAILABLE IN: 1", 1-1/4", 1-1/2", 2", 2-1/2", 3", #14 heavy duty

Packaged 250 pieces per bag

Available with self-drill #5 point for installation into metal substrates up to 1/2" thick



Premium #14 Warranted Stitch/Lap Fasteners

Long life stainless steel with 20 year warranty

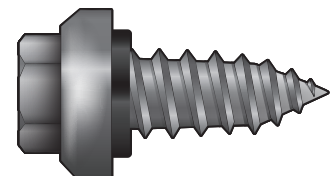
Metal to metal applications up to 8 gage

Metal panel and trim to metal panel applications - 5/16" drive

AVAILABLE IN: 7/8" with #1 self-drill point

Packaged 250 pieces per bag

Stitch thread for superior hold



Premium #14 and #17 Warranted Replacement Fasteners

Long life stainless steel with 20 year warranty

Metal to metal and metal to wood applications

Designed to replace old, worn, and rusted fasteners

3/8" drive

Available in #14 heavy duty

Packaged 250 pieces per bag

AVAILABLE IN: #14 x 1", #14 x 1-1/2", #14 x 2", #14 x 2-1/2", #17 x 1", #17 x 1-1/2"

Fastener Accessories



Premium #43 Stainless Steel Rivets

With full 300 series stainless steel rivet and mandrel

40-year corrosion warranty

For use with aluminum, copper, or Galvalume panels

1/8" rivets with a grip range of 0.126" to 0.187"

Concealed panel and trim applications
Packaged 250 pieces or 5,000 pieces per bag



WIP 250HT Self-Adhering Roofing Underlayment

Consists of fiberglass-reinforced rubberized asphalt laminated to an impermeable film layer to provide dual-barrier moisture protection.

Non-abrasive polyester surface is excellent for use in tile and metal applications.

AVAILABLE IN: 62mils thick, 36" x 66.8' rolls (200 ft²)



Geocel 2300 Clear Sealant

Flexible, resists cracking

Easy to apply, paintable

Excellent adhesion to many building substrates - even damp, oily, or dirty

Cured sealant is mildew resistant

AVAILABLE IN: 10oz tubes (Available in standard metal roof colors by special order)



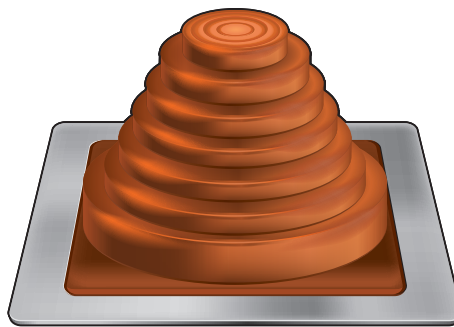
Standard Masterflash EPDM Pipe Flashing Round Grey

With 20-year warranty and UV protection

Waterproofs roof penetrations

AVAILABLE IN: various sizes to fit up to 26" pipes Standard #3 fits 1/4" to 4" pipes

Packaged 10 pieces per box



Premium Colored EPDM Pipe Flashing Square Colored

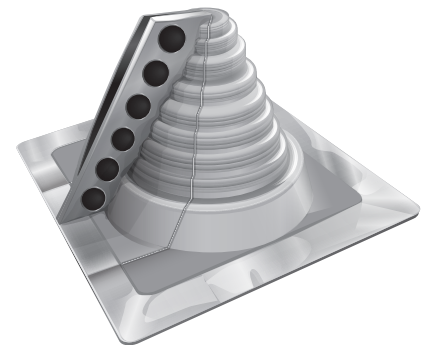
With 20-year warranty and UV protection

Waterproofs roof penetrations

AVAILABLE IN: 11 standard colors

Standard #3 fits 1/4" to 4" pipes

Packaged 15 pieces per box



Standard Retrofit Masterflash EPDM Pipe Flashing

Square Grey

With 20-year warranty and UV protection

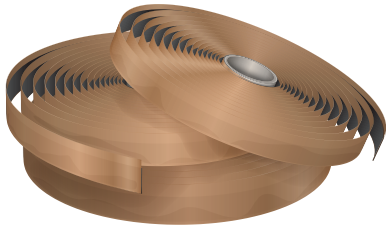
Waterproofs collared pipes and electrical conduit

AVAILABLE IN: various sizes to fit up to 16-1/4" pipes

Standard #101 fits 1/2" to 4" pipes

Packaged 5 pieces per box

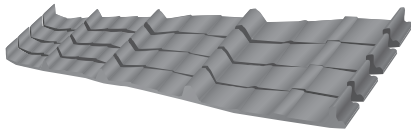
Fastener Accessories



Premium Tacky Tape Butyl Tape Sealant Rolls

100% solid, asbestos-free butyl tape sealant. Highly rubbery, tacky, reinforced, compound designed for sealing metal lap joints in the metal building industry. Easy to apply and compress during installation. Excellent application and performance characteristics over a wide temperature range. Will not become brittle, crack, or flow during service. Supplied in ready-to-use rolls and pre-cut endlap pads for standing seam roof (SSR) applications. Also available in double and triple bead rolls and endlap pads. Seal and prevent the entry of dust, air, and moisture and assure a weather-tight seal in metal building details, metal rib and end joints, standing seam roof endlaps, and more.

AVAILABLE IN: 3/32" x 3/8" x 45' rolls -- 3/32" x 1/2" x 45' rolls (standard) 3/32" x 1" x 45' rolls -- Double Bead 7/8" rolls and Triple Bead 2-1/2" rolls



Standard Closure Strips - Die Cut

Cut to fit specific panel profiles

Inside closures for eve / outside closures for ridge

Weatherproofs panel profiles at the eve and ridge

Available with adhesive for easy installation

AVAILABLE IN: 100 pieces per box, length of closure strip will equal your panel width



Razorback Ridge Vent Metal Roofing Ridgevent

Universal to fit many panel profiles

Weatherproofs ridge while providing ventilation

Convenient 10' rolls with adhesive for easy installation

Florida Building Code approved

110MPH wind driven rain resistance

40-year UV resistant

AVAILABLE IN: 1-1/2" x 2" x 10' rolls (10 rolls/pkg - 100 lft) -- 1-3/4" x 2" x 10' rolls (10 rolls/pkg - 100 lft special order)



Touch-Up Paint

Aerosol paint designed to match panel colors, for use to touch up minor nicks, scrapes, or scratches which may occur during installation

AVAILABLE IN: 4.25oz aerosol cans



Direct*Seal Longlife Universal Closure Rolls

Universal to fit many panel profiles

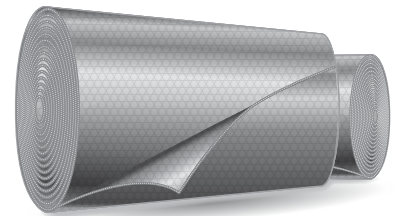
Convenient 20' rolls with adhesive for easy installation

Seals ends of panel profiles when standard closures cannot be used

Common uses include hips and valleys

40-year UV resistant

AVAILABLE IN: 1" x 1" x 20' rolls -& 1-1/2" x 1-1/2" x 20' rolls



Bubble Foil Insulation

Reflects 97% of radiant energy, cost efficient, non-toxic, non-carcinogenic, quick and easy installation, cClass A/ Class 1 fire rating, inhibits dew point condensation problems, no protective clothing required for installation, great vapor barrier, does not promote nesting of insects or rodents, does not compress, collapse or disintegrate and is extensively tested.

Single bubble foil white ranges from horizontal value of R5.9 to heat flow down value of R13.2

AVAILABLE IN: 6' x 125' rolls (750ft²)



Fastener Accessories

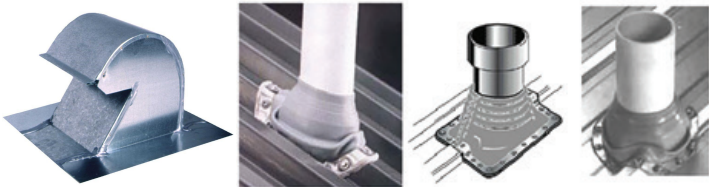
Polycarbonate Translucent Panels

Polycarbonate panels are strong and durable up to 200 times the strength of traditional glass. Polycarbonate Translucent Panels are co-extruded with UV protection. UV Ray resistance with optimal light transmission.

Up to 10 year warranty against loss of light transmission due to yellowing, and damage due to hail.

AVAILABLE IN: 0.031" thick (12' Clear MR9, 12' Clear MR12, 12' Opal/White MR12) -- 0.039" thick (12' Clear MR9, 12' Gray MR12, 12' Opal/White MR12) -- 0.06" thick (12' White MR12)

Pipe Flashings, Flasher, Dektite, Masterflash, Goosenecks and Retrofit



Designed for metal roofing to flash in pipe penetrations through panels.

Pipe opening can be easily customized on job sight utilizing clearly marked pipe diameters on each flashing

EPDM and Silicone are both flexible materials, resistant to ultraviolet rays, cracking, or weathering

Aluminum base is corrosion resistant and conforms easily to any panel configuration of roof pitch

Retrofit flashings are available for electric conduit, or piping, with welded caps or cross bars

Gooseneck vents sizes available: 4" x 7", 4" x 10", 10" x 10"; Galvalume or white

Installation

Ask salesperson for installation instruction sheet.

Instock Sizes

ROUND BASE

Gray EPDM Flasher / Dektite #1, #2, #3, #4, #5, #6, #7, #8, #9

Retrofit Gray EPDM Dektite (Call about sizes)

SQUARE BASE

Gray EPDM Flasher / Masterflash - #3

Retrofit EPDM Gray Masterflash - #101

Silicone High Temp Red Masterflash - #3

Specifications

TEST TYPE	EPDM	SILICONE
Advance ozone resistance test at 500 PPHM	70 HRS	70 HRS
High temperature Intermittent:	275° F	500° F
High temperature Continuous:	212° F	437° F
Low temperature resistance tested to	-65° F	-100° F
Tensile Strength	1450 PSI	700 PSI

Sizes

ROUND BASE

SIZE	FITS PIPES	O.D.
#1	1-1/4" - 2"	4 3/4"
#2	1-3/4" - 3 1/4"	6 1/4"
#3	1/4" - 4"	7 3/4"
#4	3" - 6 1/4"	9 1/4"
#5	4 1/4" - 7 1/2"	10 3/4"
#6	5" - 9"	12 1/4"
#7	6" - 11"	14 1/4"
#8	7" - 13"	14 1/4"
#9	10" - 19"	25 1/4"

RETROFIT MASTERFLASH

SIZE	FITS PIPES
#101	1/2" - 4"
#201	4" - 9 1/4"
#301	9 1/4" - 16 1/4"