

Issue 163 September 2021

# LAMAS NEWSLETTER

LONDON AND MIDDLESEX ARCHAEOLOGICAL SOCIETY



Owing to the continuing complications of living with COVID-19 the decision has been made to hold the 55<sup>th</sup> LAMAS Local History Conference on 13 November 2021 online. Its theme will be **“London Overcomes” – Resilience and Recovery in the History of the Capital**. Further details may be found inside this Newsletter.

[www.lamas.org.uk](http://www.lamas.org.uk)

## CONTENTS

	<b>Page</b>
<b>Notices</b>	<b>2</b>
<b>Reviews and Articles</b>	<b>14</b>
<b>Events and Exhibitions</b>	<b>23</b>
<b>Affiliated Society Meetings</b>	<b>24</b>

---

## NOTICES

### ***Newsletter: Copy Date***

Please note that the final copy deadline for the January 2022 *Newsletter* is 19 November 2021. Please send items for inclusion by email preferably (as MS Word attachments) to: **[rhbg.lamas@gmail.com](mailto:rhbg.lamas@gmail.com)**, or by surface mail to me, Richard Gilpin, Honorary Editor, *LAMAS Newsletter*, 84 Lock Chase, Blackheath, London SE3 9HA.

It would be greatly appreciated if contributors could please ensure that any item sent by mail carries postage that is appropriate for the weight and size of the item.

\*\*\*\*\*

### **The Newsletter by email**

Once more the *LAMAS Newsletter* is being published electronically in colour, but traditional black and white copies are, for now, being printed and posted to members for whom the Society has no email address.

For some years the printed *Newsletter* has been made up of 32 pages and, as associated costs continue to rise, it may have to decrease in size.

By contrast, the emailed version allows LAMAS to give members more information, with more – and bigger – illustrations in colour. This means that the emailed version can include more features, illustrations and news than the printed version.

**The Society urges any readers who are not currently receiving the *Newsletter* by email, but who wish to receive the benefits of doing so, to send their email address to: [secretary@lamas.org.uk](mailto:secretary@lamas.org.uk).**

Please note that if you receive the digital version you will not also receive a hard copy version.

Furthermore, the Society has now successfully held its spring conference online, and the autumn Local History Conference will follow this format. This means that the ticketing will be done using Eventbrite and/or the Society's website, and those readers who wish to apply and pay for tickets will need to do so online and will need to provide an email address.

\*\*\*\*\*

## **A VERY IMPORTANT NOTE TO ALL MEMBERS**

**This is a reminder to all members of LAMAS that 1 October marks the start of the society's year – that is when your subscription is due to be paid for the year 2021-2022.**

An exception to this applies to those few members who paid both for the coming year as well as the current one.

The other exception affects those new members who joined after June this year and whose membership is considered paid until the end of September 2021.

**If you paid your subscription in the months since last 1 October (including those who are still sending their remittance to me) then you are due to pay for 2021-2022 when 1 October rolls round again!**

Please also make sure that you are paying the correct amount for the type of membership that you have. I have included below the various categories of membership so please check you are requesting the one that you require. **There are a number of members who are still paying the amount set until it was altered in 2012 and over time this has cost LAMAS a significant amount of lost revenue.** Given the quality of publications that are sent to the membership and the other awards to help funding a number of important projects in a climate where other funding may be disappearing, it is important that LAMAS can continue to provide the help needed in the future.

I have included the information below for setting up a Standing Order for your subscription. Also I must ask those using either Paypal or a Standing Order to please include your name/initial as a reference to the payee. Some people have a nickname with which I am not familiar and so for clarity please do 'introduce' yourself!

**So may I appeal to all members to remember 1 October and to check that their Standing Orders are correct! Any queries please get in touch via the email below.**

With many thanks

Fiona Haughey

Honorary Subscriptions and Membership Secretary

**membership@lamas.org.uk**

### **Subscriptions:**

Ordinary (Individual) members	£20.00
Joint members (must be at same address)	£25.00
Student members (without Transactions)	£6.00
Corporate/Institutional members	£30.00
Affiliated local societies	£25.00

CAF Bank Limited Sort Code: 40-52-40 Account No: 00017438

Beneficiary: London & Middlesex Archaeological Society

\*\*\*\*\*

### **City of London Archaeological Trust grants**

The City of London Archaeological Trust (CoLAT) continues to offer small grants for archaeological work in the London area. The next deadline for grants is Friday 17 September 2021 and the meeting of CoLAT to decide the grants will be in early December. The grants will be available for one year only from 1 April 2022.

For details and recent recipients see the trust's website: [www.colat.org.uk](http://www.colat.org.uk). Guidance can be obtained from the Secretary, John Schofield, on [john@jschd.co.uk](mailto:john@jschd.co.uk) (note that this is a different address from last year).

\*\*\*\*\*

### **LAMAS Lates**

Whilst most Covid-19 restrictions have been lifted at the time of writing, the price of freedom appears to be that infection rates are rising. It has been said that there is no such thing as a free lunch, and the government has left its citizens to decide for themselves what price they consider acceptable. The Society, mindful of the safety, health and welfare of its members and their friends, is not quite ready to restart LAMAS Lates. We will keep on thinking about what is safe and possible over the coming months, and announcements will be made via email and the website.

\*\*\*\*\*

### **Jean Macdonald (1920-2021)**

Long-standing members of LAMAS will be saddened to hear of the passing of Jean Macdonald, a former Honorary Secretary of the Society (1986-1990), who died peacefully on 27 June at her Pinner care home, aged 101. Prior to her – reluctant – retirement from the Museum of London in 1985 (below, from left to right: Hugh Chapman, Prof WF Grimes, Jean, Max Hebditch, Christine Jones, Ralph Merrifield and Jenny Hall), she was responsible for the important prehistoric collections, and shaped the first gallery display (1976–1992) which told London's early story.

Jean had joined the old London Museum in 1946, initially as secretary to WF Grimes. He quickly spotted her potential and suggested that she study for a degree at Birkbeck, University of London.



Never one to push herself forward, Jean was a kindly but diligent facilitator, generously and diffidently imparting her hard-won knowledge either at first hand, or through her characteristically tightly hand-written and much annotated index cards. To some, the latter were rather more

informative (and certainly more human) than the computerised versions that inevitably followed. She also published important pioneering contributions of her own in the *Victoria County History of Middlesex 1* (1969) and *LAMAS Special Paper 1* (1976).

Although she lived most of her life in the capital (her mother Katherine was a Londoner) Jean was a proud Scot like her father Peter, and never quite lost her accent, which became more pronounced in moments of excitement. Neither did she ever mislay her positive sense of humour and bright smile – nor indeed her strong principles. She was a devoted union member and, with Jacobite sympathies very much to the fore, refused to be introduced to the Queen at the opening of the new Museum in 1976. She also seemed to have an inexhaustible supply of crisp Scottish £1 notes, whose source was often pondered upon, but never disclosed!

Friends and former colleagues came together recently at her funeral in Ruislip, at which her life and work were celebrated with tartan-wrapped shortbread and a ‘wee dram’. It is no exaggeration to say (though she would have modestly denied it) that Jean put in place the solid foundations on which all study of the capital’s earliest past now rests. Francis Sheppard described her as “a fine scholar with an encyclopaedic knowledge of the ... Museum’s collections”. No one who knew Jean personally or who had cause to use the material for which she was responsible for so many years would quibble with his apt assessment.

*Jon Cotton and Jenny Hall*

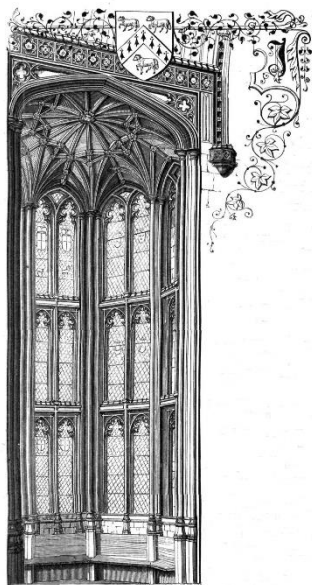
\*\*\*\*\*

**LAMAS *Transactions* articles from 1860 to 2016 database  
go online with the Archaeology Data Service**

Today thanks to the world wide web, the accessibility of publications has been transformed and the Society is responding to this trend.

For some years back issues of the Society’s *Transactions* have been available online via the Society’s website in the form of PDFs, see: <http://www.lamas.org.uk/archives/transactions>. Unfortunately, it is not possible to undertake a key word search of these volumes, for example to find all of the articles about the Tower of London or Westminster Abbey. However, making all the *Transactions* articles from 1860 to 2016 available via the Archaeology Data Service (<https://doi.org/10.5284/1088083>) transforms this situation by allowing everyone to search the database of article titles by a number of variables including author, date and geographical location. However, the ADS database does not include the Society’s accounts, book reviews, conference reviews and indexes. Currently, all the volumes of *Transactions* are available as PDFs to download from the Society’s website.

The Society published its first volume in 1860 and for the next thirty years issued a part volume in most years. The early volumes contained many



BAY WINDOW, CROSBY HALL.

articles written by the Reverend Thomas Hugo, who was one of the founders of the Society, its first Chairman, and a prolific contributor to the Society's *Transactions*. To the left is an image from his article on Crosby Hall (first series, vol 1). He appears to have encouraged many other Anglican clergymen to write articles. The early volumes covered quite a diverse range of topics including historic standing buildings (particularly churches) but included documentary research, records of the Society's visits, and new archaeological discoveries made during the redevelopment and expansion of Victorian London. For instance, in 1866 a medieval tile kiln discovered along Farringdon Road was discovered

(*Transactions* vol 3 part 1, 1866). Some of these reports such as the description of the monumental Roman buildings discovered in 1868 during the construction of Cannon Street Station (*Transactions* vol 3 part 3, 1, 1868), represent the only record of these structures. The early volumes contain some wonderful illustrations (both engravings and photographs), including some of the buildings that were subsequently either destroyed during redevelopment or by the Blitz, so provide a unique record of their appearance.

The first article in *LAMAS Transactions* that can definitely be credited to a woman author was published by Mrs Jane Hunter Doughty on Bevis Marks Synagogue in 1914 (*Transactions* second series vol 3, part 1, p.49). However, when only initials are listed the gender of some early authors is uncertain. The next woman author was Hilda Johnstone writing about Latin in 'Taphology' in 1928 (*Transactions* vol 5, part 4, p.482).

In 1890 the Society stopped publishing its *Transactions* but in 1897 they resumed publication with a second series, which continued on a fairly regular basis until 1940 when, due to the shortage of paper and war-time restrictions, publication was suspended until 1948.

The first post-war volume was dominated by articles on the City of London churches and other historic buildings damaged or destroyed by bombing, V rocket attacks and town planning. The Notes and Queries section included two items by Shepherd Frere on archaeological finds from two gravel pits in South-West London. From 1973, owing to the increasing number and length of the archaeological reports being published, the present practice of publishing a larger annual volume was adopted. From 1982 onwards images have appeared on the cover of each volume and since 1990 they have been in colour.

*Bruce Watson*

\*\*\*\*\*

### **Holocaust Memorial in Victoria Tower Gardens approved**

On 29 July the government gave planning permission for the construction of the controversial Holocaust Memorial in Victoria Tower Gardens, next to the Houses of Parliament in Westminster. The inspector's report can be downloaded from here:

<https://www.westminster.gov.uk/media/document/decision-for-the-holocaust-memorial-in-victoria-tower-gardens>

\*\*\*\*\*

### **Battles for Archaeology**

In her excellent and far-sighted valedictory Presidential Address in 2020, on the subject 'Fifteen Decisive Battles for London Archaeology', Taryn Nixon defined three national and ongoing concerns about the management of processes that very much affect archaeological remains.

One of these was the successive deregulation of the planning process, and the prescience and validity of Taryn's words would certainly appear to have been borne out by recent developments.

Such deregulation is a key aspect of the government's White Paper consultation document *Planning for the Future*, to which Harvey Sheldon replied on behalf of LAMAS (*Newsletter*, January 2021), stressing that the removal of safeguards in the document were in conflict with the Society's concern that London's built and buried historic environment should be protected. *Planning for the Future* imposes a change of priority from one of protection and conservation to one of easily facilitated development. It is one that we have to see as one of Taryn's Battles for Archaeology and is a fight that we must not lose.

Only recently, on a national scale, we have seen UNESCO removing the World Heritage Site status of Liverpool's historic waterfront following the prioritisation of destructive development, and the World Heritage Site status of the landscape of Stonehenge is now being looked at closely in view of the challenge to its integrity presented by the government's preferred solution to the area's longstanding road traffic problems. The writing is on the wall for all to see.

As a society with many affiliated local societies and its own Historic Buildings & Conservation Committee we are fortunate to have eyes and ears across the capital and, if we remain alert to potential abuses of national and local government that will threaten our archaeological and historical heritage, we are in an important position to be champions of what we prize so highly.

Many readers will recall that, when the remains of the Rose Playhouse were under threat from development in 1989, a number of stars from the world of entertainment came forward, including the dying Lord Olivier, and used their high profile to raise public awareness and help to bring about the survival of a significant part of London's heritage.

Today such support for our built and buried heritage is coming from the media, in the form of Dr Chloe Duckworth, Professor Alice Roberts and Dan Snow, and is to be hoped that more will follow.

In the meantime, although much used – and sometimes misquoted – the words of Edmund Burke (updated for the 21<sup>st</sup> century) may be appropriate: “the only thing necessary for the triumph of evil is for good men and women to do nothing”.

*Richard Gilpin*

\*\*\*\*\*

### **LAMAS Lectures on Zoom – what do members think?**

As we have been unable to hold the recent lectures at the Museum of London, the lecture programme has continued in a virtual format and we’ve been pleased to attract a high number of attendees, including from abroad. We hope to hold physical lectures soon and are considering if hybrid events, physical and virtual, are possible. We’d like to hear your views!

- Have you attended lectures on Zoom?
- If yes, what have you liked or disliked about the format?
- If you have not attended, is there a reason for this, could the virtual format be improved?

Please send your views to [secretary@lamas.org.uk](mailto:secretary@lamas.org.uk) by 31 October 2021

\*\*\*\*\*

### **LAMAS Lecture Programme 2021-2022**

The Society had been hoping to bring its lectures back to the Museum of London for the 2021-2022 season, but the future is currently uncertain.

The lectures will therefore take place from 6.30pm to 7.30pm on the following dates online only via Zoom until further notice.

Members are requested to book on Eventbrite via the Society’s website, <https://www.lamas.org.uk/lectures.html>. As usual non-members will be very welcome and there will be a charge of £2.50.

We will email members to notify any changes – please also check the website and our social media platforms.

Thank you for your understanding.

**The full programme from October 2021 to May 2022 is as below.**

**12 October 2021**

**London's Waterfront 1666 to 1800:  
an introduction to a large project,**

John Schofield

*This will include a first view of the post-Fire archaeology at Billingsgate in 1982 (with links to slavery) and a wider view of the archaeology of both*



*banks of the Thames down to Deptford during this period (image shows Billingsgate in the 1750s).*

**9 November 2021**

**The EAS and Elsyng Tudor royal palace, Dr Martin Dearne,  
Fieldwork/Research Director, Enfield Archaeological Society**

*A summary of the activities of the EAS, focusing mainly on its long-term excavations at, and documentary research into, the fifteenth to seventeenth century courtier's and later royal palace of Elsyng (in the grounds of Forty Hall, Enfield) which have focused especially on exploring one of the service*



*wings of this large but little-known house (image shows excavated furnace in the probable boiling house of Elsyng © EAS)).*

**14 December 2021**

**Where practice trenches meet Roman ditches: Roman and wartime  
archaeology at Royal Liberty School, Havering, Helen Chittock and  
Les Capon, AOC Archaeology**

*During 2019, AOC Archaeology undertook excavations at the Royal Liberty School in the London Borough of Havering. This site is home to Hare Hall, a Palladian mansion built in 1769-70, which has housed the school since 1921. Excavations uncovered evidence relating to the parklands and gardens of Hare Hall, in addition to a zig-zag shaped practice trench, dug during the site's life as a World War I training camp for the Artists Rifles regiment. A programme of Historic Building Recording was also carried out on three structures of World War II date, comprising two civilian shelters and a probable minor defensive fortification. In addition to this more recent evidence, a series of Roman linear features were revealed, adding to the understanding of Roman occupation in this part of eastern London. This lecture summarises AOC's findings at the site, investigating its archaeology and history from the Roman period to the 20<sup>th</sup> century (image courtesy of AOC Archaeology Group).*



**11 January 2022**

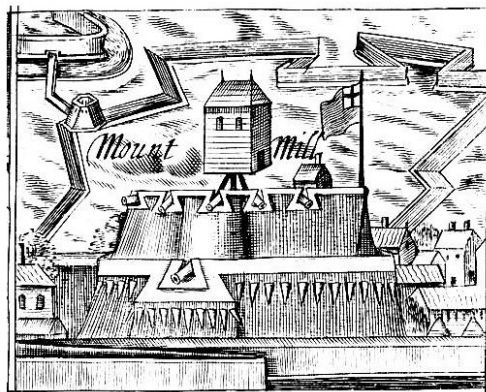
**Hillingdon's Hidden History**, Emma Tetlow, Skanska-Costain  
*Archaeology and the weather are not unknown to each other. This talk describes how they and HS2 met serendipitously in Hillingdon one day.*

**8 February 2022**

**Annual General Meeting and Presidential Address**, Gillian Tindall

**8 March 2022**

**The Civil War Defences of London: Rewriting History (and Archaeology)**, Peter Mills and Mike Hutchinson, Mills Whipp Projects  
*Over many years archaeologists in London have felt increasingly uncomfortable with the suggested lines of the Civil War Defences, which*



*have been based on an 18<sup>th</sup> century map. Where archaeologists expected to find the defences, they were conspicuous by their absence. Historic England sponsored MWP to undertake research into the defences, examining both the archaeological and documentary evidence. The results have been startling: almost every defensive line and fort has been misplaced. The initial results have led to a radical revision not only of the location of the defences but also their form and function. MWP will present a summary of the results (image shows Mount Mill in 1643).*

## **12 April 2022**

### **The Icehouse at Park Crescent West, Danny Harrison, MOLA**

*From 2015 to 2018, a standing building survey was undertaken in stages to record a near-intact late 18<sup>th</sup>-century subterranean icehouse to the rear of Park Crescent West, just to the south of Regent's Park, London. The significance of the structure as the earliest known commercial-sized icehouse of its type in England was recognised early in the investigation and in October 2015 it was designated a Scheduled Ancient Monument. The icehouse was infilled with rubble in 1961 during the post-war reconstruction of the John Nash-designed crescent, which had been irreparably damaged by bombing during the war. This infill was removed over the course of the recent investigation, revealing a substantial brick-built ice well, 9.6m deep internally, along with a subterranean entrance passageway and adjoining vault. The talk will describe the icehouse and the historical context of its construction.*

## **10 May 2022**

### **Joint Prehistoric Society and LAMAS lecture:**

#### **Hidden depths – revealing new insights into the archaeological human remains from the London reaches of the River Thames,**

Nichola Arthur

*Hundreds of human skeletal remains, many of which are Late Bronze Age or Iron Age in date, have been recovered from the London reaches of the*



*River Thames over the last two centuries or so. Interpreting the presence of these remains has long posed a problem for archaeologists, and*

*previous debates have focused on whether the majority reflect ritual deposition practices or the action of fluvial processes. This talk will explore how a large programme of research, which includes radiocarbon dating, osteological analysis, and stable isotope ( $\delta^{13}C$ ,  $\delta^{15}N$ ,  $\delta^{34}S$ ) analysis, is revealing new insights into this assemblage and its deposition (image shows the Putney foreshore).*

\*\*\*\*\*

### **A Late Iron Age potin coin hoard from Hillingdon**

After a recent rainstorm, which caused sheet erosion along the line of HS2 in Hillingdon in West London, archaeologists spotted a hoard of about 300 potin (tin-rich bronze) coins of 1<sup>st</sup> century BC date (below) on the surface in an area which had been stripped of topsoil, which implies that it was not



originally buried deeply. The concentration of the coins suggests that they were buried in an organic container like a bag. These coins are based on examples minted in France and depict on their obverse a stylised portrait of the head of the Greek god Apollo, with a charging bull on the reverse. The coins apparently were not buried near a settlement, and it can be interpreted that they may have been intended as an offering to the gods, perhaps deposited in a sacred place or along a tribal boundary. Alternatively, the coinage may have been concealed secretly for reasons of security.

*Bruce Watson*

\*\*\*\*\*

### **LAMAS lectures now available on LAMAS's YouTube channel**

A positive result of presenting our 2020-2021 Lecture Programme via Zoom is that we have recorded some of the lectures (right), along with some addresses that were given at the March 2021 Conference of London Archaeologists (below).





The John Stow lecture (right), given in April 2021



by Professor Vanessa Harding, has also been recorded.

Films of the above, and quite a few more, are now available for you to view at your leisure and can be found on our new YouTube channel. This is:

[https://www.youtube.com/channel/UC165iliNt8UZgfQzDutxK\\_Q/videos](https://www.youtube.com/channel/UC165iliNt8UZgfQzDutxK_Q/videos)

\*\*\*\*\*

## **LAMAS 55<sup>th</sup> Local History Conference**

### **“London Overcomes” Resilience and Recovery in the History of the Capital**

**Saturday 13 November 2021: 09.45-16.00  
with talks and discussions held online**

**09.45** Opening Comments and practicalities

#### **10.00-10.45 Keynote Lecture**

Modernist Visions vs. Reality in Postwar Rebuilding, **Catherine Flinn**

#### **11.00-11.30 Session 1**

Casualty Services and Civil Defence within London, **Nathan Hazlehurst**

#### **11.30-11.45 Coffee break**

#### **11.45-12.15 Session 2**

Shamefaced No More: Pauper Letter Writers, Resilience and the Workhouse Experience in Poplar and Bethnal Green, ca.1860-1890,  
**Dr Peter Jones and Professor Steven King**

#### **12.30-13.00 Session 3**

The Brentford Flood, **Val Bott**

#### **13.00-13.45 Lunch break**

**13.45-14.15** News and Updates from Local Societies

#### **14.15-14.45 Session 4**

Lost angels of a ruin'd paradise, **Peter Coles**

**14.45-15.00 Tea break**

**15.00-15.30 Session 5**

Who hid the Cheapside Hoard?, **Dr Rosemary Weinstein**

**15.45-16.00**

**LAMAS Publication Awards for 2019/20 and 2020/21**

Introduced and presented by the Chair of the Local History Committee

### **Tickets**

Ticketing details, when available, will sent directly to those members for whom the Society holds an email address, and will also be posted on the LAMAS website ([www.lamas.org.uk/conferences/local-history.html](http://www.lamas.org.uk/conferences/local-history.html)).

---

### **LAMAS Lectures**

The sixth LAMAS lecture of the season, using Zoom again, was a very detailed talk, **Excavations within the Great Kitchen of Westminster Abbey**, given on 13 April by Joe Brooks (Pre-Construct Archaeology).

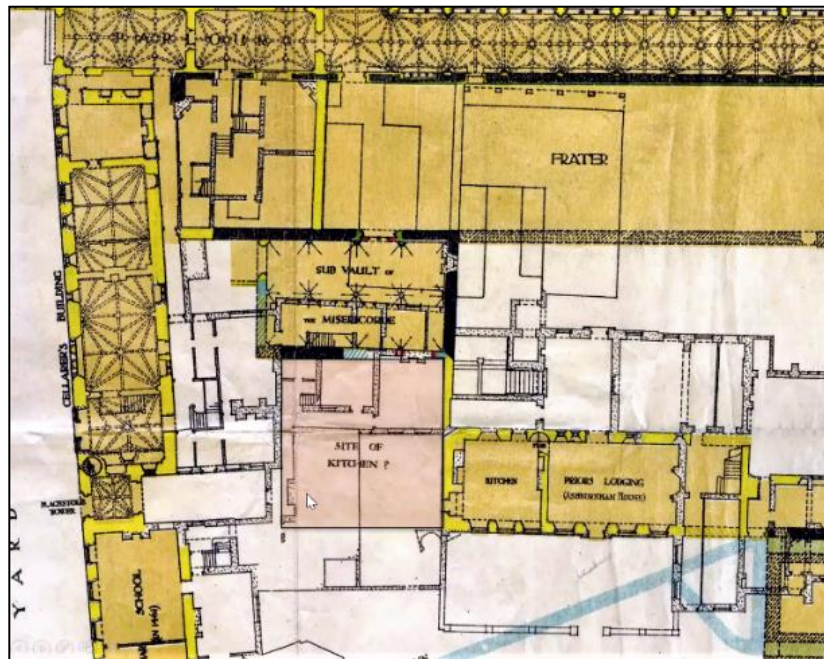
On behalf of Westminster School, Ptolemy Dean Architects had commissioned Pre-Construct Archaeology to undertake the archaeological works necessary to implement a redevelopment of the Adrian Boulton Music Centre and Ashburnham House. The redevelopment entailed the erection of an infill extension to replace the existing Adrian Boulton Music Centre and make associated internal alterations within Ashburnham House and to walls of adjacent buildings. The archaeological works were conducted between 8 August 2017 and 26 September 2018.

The earliest deposits encountered during the investigation were brownish yellow sandy alluvial which was consistent with natural deposits recorded during previous archaeological investigations at Westminster Abbey.

The alluvium was overlain with Saxo-Norman levelling layers, construction surfaces, beam slots and postholes indicating activity on the site before the construction of the Great Kitchen.

The archaeological investigation located the external walls of the Great Kitchen establishing that its internal dimensions had an area of *c.* 11.6m<sup>2</sup>. A floor, a hearth and a fireplace represented the earliest occupation of the Great Kitchen.

In the period 1200-1300 the floor of the Great Kitchen was raised and re-laid. The northern doorway was also blocked in and re-located to a new position around 1m to the east following the construction of the



Misericorde immediately to the north of the Great Kitchen (above). The eastern wall of building located to the south-west of the kitchen was also discovered and around 100kg of Chapter House tile wasters were recovered from pits located to the rear of the kitchen.

Major modifications were made to the Great Kitchen in the period 1300-1450. Evidence from the investigation suggests that the eastern and part of the southern wall were demolished and rebuilt. This seems to have coincided with the construction of the Prior's House, which shared the Great Kitchen's eastern wall. Features were also added to the interior of the kitchen including a stone drain, lead water pipes and hearths formed from pitched peg tiles. A low wall found in the south-west corner of the kitchen may represent a support for a wooden structure such as a staircase. Ground raising episodes south of the Great Kitchen were also recorded

Late medieval occupation of the Great Kitchen was represented by internal features such as brick floors, hearths, ovens and a brick culvert. The discovery of an internal wall indicated that the interior had been compartmentalised with different floor levels inferred from the discovery of a sloping brick floor. The discovery of a buttress abutting the exterior of the south wall may indicate that a large internal structure such as a fireplace was positioned internally against the south wall.

The 'Great Drain' of Westminster Abbey was discovered to the south of the Great Kitchen. This brick vaulted structure measured 1.20m high by at least 4.60m wide.

Layers of demolition material and multiple robber cuts within the interior of the Great Kitchen represented its demolition in the 1540s. Subsequent development in the 17<sup>th</sup> century included the construction of the Hilary

Wing in the northern part of the site and the Wash House and Mrs Playford's House in the southern areas of excavation. In the post-Dissolution period the site of the former Great Kitchen was used as a yard under which successive drainage and sanitation systems were installed. These utilities were represented by 17th-century brick cess pits, 18<sup>th</sup>- and 19<sup>th</sup>-century brick drains, and a network of mid-19<sup>th</sup>-century ceramic tubular drains. A gold enameled *memento mori* ring dating to the early 18<sup>th</sup> century (right) was discovered within the backfill of a cess pit. The configuration of the site was changed in the mid-19<sup>th</sup> century with the creation of a garden following the demolition of Mrs Playford's House and the Wash House and the construction of Liddell's Kitchen in the western part of the site. An eastern extension of Liddell's Kitchen and the addition of a south-western wing to Ashburnham House encroached the site.



The final phase of development related to the construction of the Adrian Boult Music Centre in 1978, which was represented by a 1.2m thick concrete slab covering the central part of the site. The archaeological remains discovered during the excavation are on display beneath a glass floor within the new reception area of Westminster School.

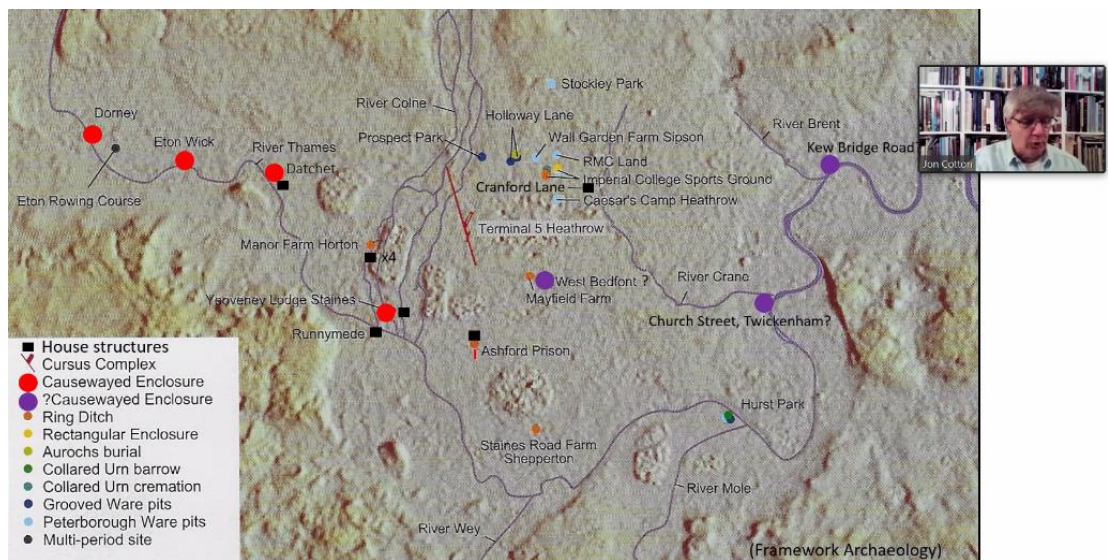
Joe Brooks is now with Salford University's archaeology unit.

The subject of the final LAMAS lecture of the season, presented jointly with the Prehistoric Society and using Zoom again, was **'In this Heath hath many camps bin pitched ...': The West London Landscapes Project in context** and was given by Jon Cotton and Nick Elsdon.

The aim of the Project has been to round up the last of the historic Greater London archaeological backlog. In the course of their lecture Jon and Nick highlighted results from a range of prehistoric and Roman sites examined between 1979 and 1994 on and beyond the Heathrow terrace gravels in west London, setting them in their local and wider regional contexts.

Their presentation, to an international online audience, took the form of an educational whistle-stop tour of a number of such 'camps' on the Heathrow terrace gravels and beyond, using a timeline from prehistory to the post-Roman period.

One of many images that greatly enhanced their presentation was the following map of features and structures in the area (courtesy of Framework Archaeology).



Evidence from sites such as Wall Garden Farm, Sipson; Holloway Lane, Harmondsworth; Cranford Lane; Mayfield Farm, East Bedfont (where a double-ditched enclosure had been identified); and Stockley Park, Dawley was discussed.



At Holloway Lane the buried skeleton of an aurochs had been found, with evidence of hunting shown by a number of flint arrowheads still embedded in the bones (left). Among many finds, Cranford Lane produced hoards of metal and money including an unusual lead ring with iron



chain (right). This proved to be of particular interest to Luisa Duarte, LAMAS's Honorary Publicity Officer, who had performed conservation work on this item when it was brought into the Museum of London Archaeological Archive for post-excavation processing.

Jon and Nick also made reference to evidence and interpretations from sites that had not been part of the Project but were part of the landscape. These included Kingsmead Quarry; the Imperial College Sports Ground; Prospect Park; Sipson Farm; the Cargo Distribution Centre at Heathrow; and Terminal 5.

Many aspects of settlement were discussed during the course of the evening, including the changing nature of enclosures and structures, the

development of farming, and evidence for craft activities. Evidence of droveways indicated that they could have been used to link nearby settlements, while their close proximity to the Roman road from Silchester to *Londinium* via Staines and Brentford suggested that their relevance may have continued well into the first millennium. Interpretations may change however, as new evidence is discovered...

The webinar concluded with thanks to the evening's speakers for their excellent and highly informative presentation from the Chair of LAMAS, Harvey Sheldon. He also took the opportunity to thank those LAMAS stalwarts who had ensured the smooth and efficient running of the somewhat challenging 2020-2021 lecture series, including the contributions of Kathryn Stubbs, Jane Sidell and Luisa Duarte.

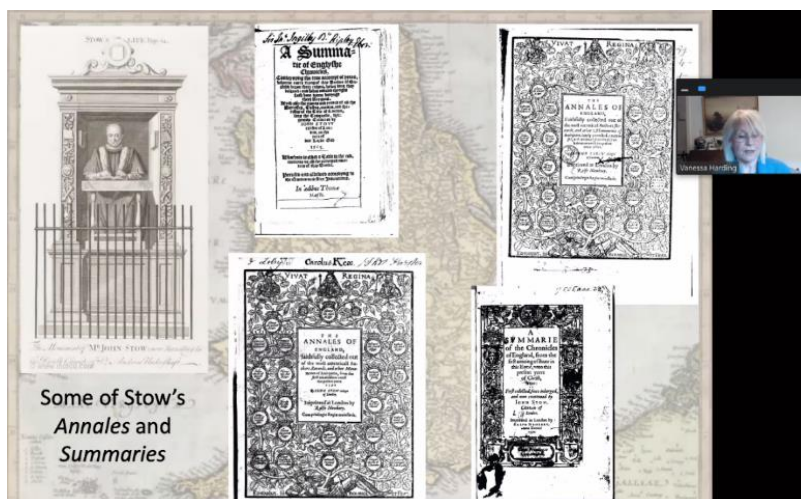
For those readers who would like to find out more information on the 'Heathe' and its past, the Editor strongly recommends a visit to the website of Framework Archaeology (<https://framearch.co.uk/>) for a user-friendly and interactive opportunity to learn about its excavations at the Heathrow Terminal 5 site.

*Richard Gilpin*

\*\*\*\*\*

### **The Stow Service and Lecture 2020**

The John Stow service planned for 2020 was one of many casualties of the COVID-19 pandemic, and this meant that Vanessa Harding was unable to give her lecture on **John Stow's legacy**. She kindly agreed however to present it a year later, on 19 April 2021, by Zoom (below).



Vanessa's lecture considered two aspects of John Stow's 'legacy': the materials he collected and preserved for posterity, and the influence of his own writings on successors in the field. It focused on one beneficiary of this legacy, Richard Smyth (1590-1675), a city law-officer who like Stow was both a collector of books and manuscripts and an important source of information for later historians and antiquaries.

Smyth shared with Stow a certain 'nostalgic antiquarianism', an interest in church history and the Catholic past, while remaining on the Anglican side of the divide. Unlike Stow, however, Smyth did not publish his researches

or seek to communicate them to a public audience, and his surviving writings are in manuscripts scattered between many libraries.

A key to understanding his interests and significance is the printed catalogue of his library compiled for its sale at auction in 1682. Among over 8000 lots were numerous works on English history, especially chronicles and chronologies, including several of Stow's publications and Stow's own annotated copy of his rival Richard Grafton's *Abridgement of the chronicles of England* (1570).

Smyth had acquired many items from the collection of Humphrey Dyson, who contributed to the fourth (1633) edition of Stow's *Survey*, and Smyth's own historical collections were acknowledged by later historians, including John Strype, who listed 'Rich. Smith, sometime Secondary of the Compter, deceased' as one of his sources for his revision and re-edition of Stow's *Survey*, published in 1720.

Smyth's largest surviving work is a compilation on English bishops, written mostly during the period 1646-1660 when episcopacy had been abolished, but he also collated material on London parish churches and dedications (referred to by Richard Newcourt, right), using his copy of Stow's *Survey* as a starting-point, and on the city's customs and administration.

Richard Newcourt, *Repertorium ecclesiasticum parochiale Londinense: an ecclesiastical parochial history of the diocese of London* (2 vols. 1708, 1710)

*And last of all, of all the Parochial-Churches, as well exempt as not exempt, which are, and of the Religious Houses, which formerly have been, within the Bounds and Limits of this Diocese of London; and of the Saints to whom they are dedicated, extracted chiefly out of a Manuscript of Mr. Ric. Smith, deceas'd, lent me by the learned Dr. Fleetwood, late Rector of S. Auktins, in London, but now Bishop of S. Asaph; and if in London, in what Ward, if in the Country, in what Archdeaconry, Deanry, and Hundred they are situate, of their Bearing and what Distance according to the old and new Miles from London, their Metropolis; and of the Jurisdiction Ecclesiastical to which they are subiect. And then after I have insertet what I*

He stands as an example of the early modern amateur antiquarian, benefiting from the work of earlier writers like Stow, and also from the flourishing market in new and secondhand books in the London of his time.

\*\*\*\*\*

### Central London Young Archaeologists' Club Zooms through 2021

Despite the problems presented by COVID-19 the meetings of LAMAS-supported Central London YAC have continued throughout tiers and lockdowns (lockdown?).



The first meeting in 2021 was held in February with a theme of **Piracy Through History**. The members learned about archaeological evidence of piracy and shipwrecks, and a number of famous (notorious?) pirates shivered their timbers along the way. Among the male pirates Blackbeard (left), Captain

Kidd and “Calico Jack” Rackham came aboard, and they were joined by some equally bloodthirsty female pirates, two of whom were Anne Bonny and Mary Read. It was concluded that piracy would not be recommended by careers teachers today.

The title of the March meeting was a *Pick and Mix Historical Buffet*. This looked at evidence from the past of what today would be called ‘eating on the go’.

The extensive time scale of street food included oysters, widely eaten in *Londinium*, followed by duck, goat, pork, fish, snails, and wine from a recently discovered *thermopolium* in Pompeii (right). Hot pies, wine, hot sheep’s feet and mackerel were popular in Medieval London, and oysters and eels were greatly favoured for centuries.



Coming closer to the present, the heritage of British fish and chips was discussed and the ‘eating on the go’ theme was topped off with a helping of ice cream – from a “Stop Me And Buy One” vendor on a bicycle (below).



In May, the meeting lifted the lid on *Toilets Through Time*, and looked at what happened to all of the March meeting’s street food after it had been eaten. Evidence came from many different sites, places and times, including Skara Brae, Ancient Egypt, Vindolanda, Ostia Antica (below) and Pompeii, showing a variety of different methods of disposing of human waste, and a short video clip from Tony Robinson’s *Worst Jobs in History* was screened [the one with the Groom of the Stool, since you ask]. Closer to the present day was the capital’s Great Stink, the solution to which was



provided by the great Sir Joseph Bazalgette and his London Main Drainage Scheme of 1858.

The theme of the July meeting – the last one before the summer break – was *Kill or Cure? Medicine Through The Ages*.

A whistle-stop trip through time showed the effects of ignorance on health, and how the numerous ineffective and inappropriate treatments of the past had gradually been superseded by a progression of scientific discoveries and inventions. The important contribution of archaeology to our knowledge of health and disease in the past was illustrated by a side trip into osteology, and the identification of the remains of Richard III (right) was given as a case study. The work of apothecaries and herbalists was outlined, and members were shown images of Delftware jars from the MOLA excavation in



Gresham Street. The jars indicated the presence of a 17<sup>th</sup> century apothecary shop in the heart of the City of London.

Members were also introduced to the many ways in which herbs have been used from the past to the present as remedies for illness, and how herbs and spices have been an important natural source of food.

*Richard Gilpin*

\*\*\*\*\*

### **London Archaeological Forum**

CBA London's annual general meeting on 27 May 2021 was followed, as in the past, by its London Archaeological Forum lectures.

The first speaker to address the online audience of sixty was **Caroline Raynor**, Project Manager and Principal Archaeologist at Costain Skanska, who had spoken to an earlier London Archaeological Forum on the subject of the HS2 Euston Cemetery excavations and was now able to bring her audience up to date with the latest developments.

Her presentation made excellent use of footage from *The Biggest Dig* television programmes, and included a video showing how the massive

Save time by creating a protective structure that moves with your dig!



HS2

protective structure for the work on the paupers' cemetery was able to move with the excavation (left). She explained that anaerobic conditions had allowed an amazing level of preservation, and much valuable evidence had been discovered.

The second speaker was **Nathalie Cohen**, archaeologist for Canterbury Cathedral and National Trust South East, who spoke about the links between Thomas Becket and London, which coincided neatly with the British Museum's exhibition *Thomas Becket: Murder and the Making of a Saint*. Becket's London links included a number of structures with which he would have been familiar, having had his birthplace near to the commemorative blue plaque (right) in Cheapside.



The final speaker was **Alistair Douglas**, H&S Manager at Pre-Construct Archaeology, whose subject was Bermondsey Abbey (reconstruction painting below) and the complicated



archaeological excavations that had produced much evidence for the development of the Abbey from its origins as an early 8<sup>th</sup> century Saxon minster church. A source of frustration however had been the way in which so much had been removed at the Dissolution, leaving almost nothing behind.

*Richard Gilpin*

\*\*\*\*\*

## London Bridge and its houses: second edition

In 2019 the London Topographical Society published *London Bridge and its houses, c 1209 - 1761* by Dorian Gerhold. This was an instant success



and sold out immediately. Now Oxbow have published a second edition. London Bridge was one of the most extraordinary structures ever seen in London, a major shopping street and home to 500 people. This book reconstructs all the buildings on it and much of its teeming life, periods of rebuilding and occasional collapses. Price £29.99 from Oxbow or Amazon; recommended.

*John Schofield*

---

### Recently published

*Inheritance: The Lost History of Mary Davies*, by Leo Hollis (2021), published by Oneworld Publications, 304 pages. £25.00. ISBN 978-1-786-07995-4.

Although a review copy of this book has not been provided, I would like to bring Leo Hollis's latest work to readers' attention, as its subject is one that may interest them. He tells the extraordinary story of Mary Grosvenor (née Davies) and her involvement, despite – or because of – legal machinations, in the development of today's Belgravia and Mayfair under the ownership and control of the Grosvenor family.

---

### Gresham College lectures

**Wednesday 15 September 2021 6.00pm-7.00pm online**

*recording available later via website*

Lecture by Simon Thurley, Provost of Gresham College.

In 1623, Charles I (as heir to the throne) made a secret and hazardous trip to Madrid to win the hand of a Spanish princess. For eight months he was the guest of the Spanish king, Philip IV, living in the Alcazar of Madrid.

The opportunities to study art, architecture and court ceremonial made a profound impact on the 23-year-old Charles, and it influenced his own taste when two years later he inherited the thrones of England and Scotland.

---

## AFFILIATED SOCIETY MEETINGS

*Owing to the disruptive effects of COVID-19, readers are advised to check with local societies before planning visits to lectures*

### **Acton History Group**

Meetings are normally held on the second Wednesday in the month at 7.30pm in St Mary's Parish Church Hall, free for members, £2 for non-members. Meetings in person are not yet possible, and Zoom will be used until meetings can be restarted in December.

---

### **Barking and District Historical Society**

Meetings held on Mondays at 7.45pm at Harp House, 16 Helmore Road (off Goodey Road), Barking, IG11 9PH. Free to members. £2.00 to non-members. Telephone 020 8597 7210. Email: barkinghistorical@hotmail.com; website: www.barkinghistoricalsociety.co.uk

**No information currently available on website**

---

### **Barnes and Mortlake History Society**

Meetings are held on Thursdays at St Mary's Parish Church, Barnes, at 8pm. The meetings are free for members (£2 for visitors). For further details please contact the Hon. Secretary on 020 8878 3756 or visit us at www.barnes-history.org.uk

**16 September 2021**

**The Royal Laundry**, Lucinda Ganderton

**21 October 2021**

**Barnes Hospital: Founded on Fever, Fostered by Friends**, Sandra Hempel

**18 November 2021**

**Forgotten Boys of the Sea: Marine Society Merchant Apprentices 1772-1873**, Caroline Withall

**16 December 2021, 7.30pm**

**Christmas Social** followed by **Barges and Bread**, Di Murrell

---

### **Barnet Museum and Local History Society**

All meetings are held in Church House, Wood Street, Barnet at 3pm on Mondays (opposite the Museum). Lectures are free for members (£2 for visitors). Contact Barnet Museum, 31 Wood Street, Barnet EN5 4BE (020 8440 8066) or visit: www.barnetmuseum.co.uk for more information.

**No information currently available on website**

---

### **Bexley Archaeological Group**

All talks are held bi-monthly in the BSCC, 19 Station Road, Sidcup, Kent, DA15 7EB, 8pm for 8.15pm start. Excavations are carried out at weekends (March-November), in which membership is required to participate on site. For further information, please contact Pip Pulfer – *Principal Field Officer*: principalfieldofficer@bag.org.uk or Clare Lodge – *Public Relations Coordinator* – pr@bag.org.uk or visit our website – www.bag.org.uk. The following events are via Zoom. Non-members also welcome £5.

**16 September 2021**

**Medieval Northumbria, coins and Vikings**, Lucy Moore

**21 October 2021**

**LiDar in Archaeology**, Andrew Mayfield

**18 November 2021**

**Archaeological sites, past, present and future**, Mark Stevenson

---

**Bromley Borough Local History Society**

The Society meets once a month from September to July, usually on the first Tuesday of the month. Meetings are held at 7.45pm in the Small Hall at the Trinity United Reformed Church, on the corner of Freeland Road and Upper Park Road in Bromley. The post code is BR1 3AQ. The Society's website is: [www.bblhs.org.uk](http://www.bblhs.org.uk). The following events are via Zoom. Non-members: contact the website.

**No information currently available on website**

---

**Camden History Society**

The society normally meets at 7.30pm on the 3<sup>rd</sup> Thursday of each month, except August. Venues vary; non-members welcome (£2). For further information please contact the Chair, Malcolm Holmes (01923 461343), [malcolmhomes@yahoo.co.uk](mailto:malcolmhomes@yahoo.co.uk), or visit: [www.camdenhistorysociety.org](http://www.camdenhistorysociety.org). The following events are via Zoom.

**16 September 2021**

**Wartime London in Paintings: a talk about the works depicting London during the Second World War commissioned by the War Artists Advisory Committee**, Suzanne Bardgett

**14 October 2021**

**Pioneer psychotherapist in Camden: Dr Jessie Murray and the Medico-Psychological Clinic**, Elizabeth Valentine

---

**Camden New Town History Group**

Camden New Town is north of Camden Town, in the London Borough of Camden. Meetings of this group of local residents are generally held on the 3<sup>rd</sup> Wednesday of each month at the Irish Centre in Camden Square.  
email: [maillist@camdennewtown.info](mailto:maillist@camdennewtown.info); website: [www.camdennewtown.info](http://www.camdennewtown.info)

**No information currently available on website**

---

**Chadwell Heath Historical Society**

Meetings are held at 7.30pm from September to June. All meetings are held at the Baptist Church Hall, High Road, Chadwell Heath, RM6 6PP. Visitors welcome £2 pp. Enquiries: 020 8590 4659/020 8597 7210; email: [chadwellheathhistsoc@hotmail.com](mailto:chadwellheathhistsoc@hotmail.com)

**No information currently available**

---

**City of London Archaeological Society**

Lectures are normally on the third Friday in every month and take place at St Olave's Church, Hart Street, London EC3R 7NB. Doors open 6.30pm for 7pm start, followed by light refreshments and an opportunity to socialise. Non-members are welcome to

attend lectures but are asked to make a £3 contribution to expenses. For further information see [www.colas.org.uk](http://www.colas.org.uk); email: [web-enquiry@colas.org.uk](mailto:web-enquiry@colas.org.uk). Any events via Zoom, contact via the website.

**17 September 2021**

**Historic Graffiti of London, Crystal Hollis**

---

#### **Docklands History Group**

The Docklands History Group meets on the first Wednesday of each month, except January, at the Museum of London Docklands, West India Quay, Hertsmere Road, E14 4AL. Meetings start at 5.30 for 6pm and finish at 8pm. Visitors are welcome (£2). For further details see: [www.docklandshistorygroup.org.uk](http://www.docklandshistorygroup.org.uk)

**No information currently available on website**

---

#### **East London History Society**

All meetings are held at Latimer Congregational Church Hall, Ernest Street, E1 unless otherwise stated. Ernest Street is between Harford Street and White Horse Lane, off Mile End Road (opposite Queen Mary and Westfield College). Meetings start at 7:30pm. The nearest underground stations are Mile End and Stepney Green. Buses: 25, 205, 339 to Queen Mary College and D6, D7, 277, 323, 339, 425 to Mile End Station. Website: <http://www.mernick.org.uk/elhs/index>  
email: [mail@eastlondonhistory.org.uk](mailto:mail@eastlondonhistory.org.uk)

**No information currently available on website**

---

#### **Edmonton Hundred Historical Society**

Talks are free to members (£1 for visitors), and are held at Jubilee Hall, 2 Parsonage Lane, Enfield; at the All Saints Church Hall, Church Street, Edmonton N9 and at Bruce Castle, Lordship Lane, Tottenham N17. Further details from Enfield Local Studies Centre & Archive, Thomas Hardy House, 39 London Road, Enfield EN2 6DS (020 8379 2839); email: [info@edmontonhundred.org.uk](mailto:info@edmontonhundred.org.uk)

**No information currently available**

---

#### **The Eltham Society**

Unless otherwise stated, all meetings take place at 8.00pm at the Christchurch Centre, Eltham High Street. Refreshments available from 7.30pm before the talk. Non-members £2.00. The following lectures are by Zoom and start at 7.00pm.  
email: [contact@theelthamsociety.org.uk](mailto:contact@theelthamsociety.org.uk); website: [www.theelthamsociety.org.uk](http://www.theelthamsociety.org.uk)

**No information currently available on website**

---

#### **The EMAS Archaeological Society**

Founded over 30 years ago as the University of London Extra-Mural Archaeological Society, EMAS now has a broad-based and diverse membership drawn from many walks of life. Younger people wishing to develop their understanding of archaeology or explore new areas of interest are especially welcome.

**Currently the EMAS events programme is in suspension but – once things return to normal – LAMAS members will once again be very welcome at EMAS lectures.** In the meantime, readers can visit [emas-archaeology.org](http://emas-archaeology.org) for articles, features and discussions on a whole range of archaeology-related topics.

---

### **Enfield Archaeological Society**

Meetings are held at the Jubilee Hall, junction of Chase Side and Parsonage Lane, Enfield, starting at 8.00pm (doors open at 7.30pm). Visitors: £1 per person. For further information please contact Ms Val Mundy, 88 Gordon Hill, Enfield, EN2 0QS. Email [valmunday@hotmail.com](mailto:valmunday@hotmail.com), website: [www.enfarchsoc.org](http://www.enfarchsoc.org)

**All lecture meetings suspended**

---

### **Friends of Bruce Castle Museum and Park**

Evening talks are last Wednesday of the month, 7.00pm for 7.30pm start. Munch and Listen talks are on the 4<sup>th</sup> Monday of the month, 12.00pm for 12.15pm start. Talks are free and open to all (tea/coffee is available for a small charge). All meetings are held at Bruce Castle Museum, Lordship Lane, Tottenham, N17 8NU. Details of the programme are available from [www.haringey.gov.uk/brucecastlemuseum](http://www.haringey.gov.uk/brucecastlemuseum) or the FoBC Secretary at Bruce Castle Museum (020 8808 8772). Car park on site.

**No information currently available on website**

---

### **The Friends of the City Churches**

The Friends of the City Churches is an architectural heritage charity dedicated to preserving the beautiful and unique churches found within the square mile of the City of London. Its aim is to ensure that the City's churches are preserved intact for posterity and, most importantly, are kept open to visitors on a regular basis. In conjunction with the Archdeaconry of the City of London, The Friends of the City Churches publishes the *City Events* broadsheet, copies of which can be found in most City churches, libraries and the City Information Office. Enquiries about particular events should be addressed to the venue concerned. Downloads of *City Events* are available from The Friends of the City Churches' website, which is: [www.london-city-churches.org.uk/](http://www.london-city-churches.org.uk/)

**Access to these Zoom lectures is via Eventbrite, with links on the website:**

**28 September 2021** at 2.00pm

**Splendours of the Wren churches**, Tony Tucker

**7 October 2021** at 2.00 pm

**The art of paper cutting**, Chloe Campbell

**20 October 2021** at 2.00pm

**Rebuilding the City**, Jill Finch

**16 November 2021** at 2.00 pm

**The Grinling Gibbons altarpiece in St Mary Abchurch**, Dr Mark Kirby

---

### **The Friends of Hackney Archives**

Meetings, talks and walks are arranged from time to time. For information about the activities of Friends of Hackney Archives, email: [archives@hackney.gov.uk](mailto:archives@hackney.gov.uk); Friends' website, listing events etc: [www.hackneyhistory.org](http://www.hackneyhistory.org); telephone: 020 7241 2886.

**No events currently scheduled**

---

### **The Friends of Kensal Green Cemetery**

For information about the activities of Friends of Kensal Green Cemetery, email: fokgc@hotmail.com; website: www.kensalgreen.co.uk

The Friends of Kensal Green offer a two-hour introductory tour of the cemetery every Sunday from the beginning of March to the end of October, and the first and third Sunday only in November, December, January and February. Tours begin at 14:00 from the Anglican Chapel in the centre of the grounds, and finish around two hours later with tea and biscuits at the Dissenters' Chapel, adjacent to Ladbroke Grove. There is no need to book regular Sunday tours, except for groups of more than ten. A suggested donation of £7 per person (concessions £5) helps the Friends to restore monuments, study the cemetery and attract visitors to Kensal Green.

**17 November 2021 6.30pm**

**Tales from the Vienna Cemeteries, Brent Elliott**

Price: £5.00

---

### **Friern Barnet & District Local History Society**

Meetings are held on the fourth Wednesday of each month (no meetings in July and August) at The North Middlesex Golf Club, The Manor House, Friern Barnet Lane, Whetstone N20 0NL, starting at 7.45pm for 8.00pm. Non-members are welcome (£2). Refreshments are available. Email: friern-barnethistory@hotmail.co.uk; website: www.friern-barnethistory.org.uk. For further details contact David Berguer on 020 8368 8314.

**No meetings for the foreseeable future**

---

### **Fulham and Hammersmith Historical Society**

There is usually a talk or a visit once a month. Visits are made to places of historic interest both within and outside the borough at varying times. For information about the activities of Fulham and Hammersmith Historical Society, visit the Society's website: <https://fhhs.wordpress.com/>

**No information currently available on website**

---

### **Harefield History Society**

Meetings are held at the Park Lane Village Centre, Park Lane, Harefield UB9 6BJ at 8.00pm on the fourth Monday of the month from September to May. Outings and other events are also arranged. Website: [www.harefieldhistorysociety.co.uk](http://www.harefieldhistorysociety.co.uk)

**Meetings will be resumed when it is safe to do so**

---

### **Hayes & Harlington Local History Society**

Most meetings are held at Botwell Green Library, Leisure Centre, East Avenue, Hayes UB3 3HW at 7.30pm. The library closes to the public at 7pm and you are advised to arrive by 7.25pm for admittance and guidance to the first floor meeting room. Non-members are welcome. Further information from Mr Robin Brown, 107 Wentworth Crescent, Hayes, Middlesex UB3 1NP (020 8848 7959). Email: hayescanal@hotmail.co.uk

**No information currently available on website**

---

### **Hendon & District Archaeological Society**

Lectures are held on Tuesdays at Stephens House & Gardens (Avenue House), 17 East End Road, Finchley, N3 3QE, and start promptly at 8.00 pm, with coffee / tea afterwards. Non-members admission: £2. Buses 13, 125, 143, 326 & 460 pass nearby and Finchley Central station (Northern Line), is a 5-10 minute walk away. For further information see the website: [www.hadas.org.uk](http://www.hadas.org.uk). Due to the COVID-19 pandemic, lectures and the AGM at least will be held online via Zoom. Apologies to those who are unable to see the lectures while this is happening.

**12 October 2021**

**Looe: a Story of sea, sand and sardines**, Vicki Baldwin

**9 November 2021**

**Battlefield Archaeology: Barnet 1471**, Sam Wilson

---

### **Hornsey Historical Society**

Lecture meetings are held on the 2<sup>nd</sup> Wednesday of every month at the Union Church Hall, corner of Ferme Park Road and Weston Park, starting at 8.00pm. A donation of £2.00 is requested from non-members. Refreshments are available from 7:40 pm. The doors close at 8:00 pm and latecomers are not admitted. For further information please ring The Old Schoolhouse (020 8348 8429); write to the Society at 136 Tottenham Lane N8 7EL; website: [www.hornseyhistorical.org.uk](http://www.hornseyhistorical.org.uk)

**No meetings currently planned**

---

### **Hounslow and District History Society**

During the pandemic all presentations will be made remotely over the internet, hosted by the Hounslow and District History Society, using Zoom.

**28 September 2021**

**West House and the Heath Robinson Museum**, Cynthia Wells

**26 October 2021**

**Customs and Traditions of the City of London**, Mark Lewis

**30 November 2021**

**Within the garden walls at Hogarth's House**, Val Bott

---

### **Islington Archaeology & History Society**

Meetings are held on Wednesdays at 7.30pm at Islington Town Hall, Upper Street N1. A donation of £1 is requested from non-members. Enquiries: 020 7833 1541; website: [www.islingtonhistory.org.uk](http://www.islingtonhistory.org.uk)

**No information currently available on website**

---

### **Kent Archaeological Rescue Unit**

Crofton Roman Villa, Orpington, BR6 8AF. Telephone: 01689 860939. Email: [crofton.roman.villa@gmail.com](mailto:crofton.roman.villa@gmail.com). Website: <http://cka.moon-demon.co.uk>

**No information currently available on website**

---

### **Kingston upon Thames Archaeological Society**

Meetings are held on the second Thursday of the month at 8pm at Surbiton Library Halls, Ewell Road, Surbiton. Visitors will be asked for a donation of £2 towards expenses. Enquiries to Hon Secretary KUTAS, 21 Duffins Orchard, Brox Road, Ottershaw, Surrey, KT16 0LP, email: kutas.archaeology@gmail.com, website: www.kingstonarchaeology.org

**All meetings postponed until further notice**

---

### **Lewisham Local History Society**

Meetings are held on Fridays at St Dunstan's College Jubilee Pavilion, Canadian Avenue, London SE6 4SW (NEW VENUE), starting at 7:45pm unless otherwise stated. Visitors welcomed, donation of £1 invited.

For further information please contact Programme Secretary Tamsin Bacchus at tamsin\_bacchus@hotmail.com; website: www.lewishamhistory.org.uk

**No information currently available on website**

---

### **London Natural History Society**

The LNHS Virtual Natural History Talk series will be continuing through 2021. The talks will take place fortnightly on Thursdays at 6.30pm up until mid-October. All of the talks are free to everyone and they are recorded and uploaded to the LNHS YouTube channel afterwards. Book talks at <https://www.eventbrite.co.uk/o/london-natural-history-society-30790245484>

**All indoor events suspended until at least the end of 2021**

---

### **Merton Historical Society**

Meetings are held monthly from October until April, at 2.30pm on Saturday afternoons at St James' Church Hall, Martin Way, Merton. For further information please contact the Honorary Secretary, Mrs Rosemary Turner, 27 Burley Close, London SW16 4QQ; email: mhs@mertonhistoricalsociety.org.uk; website: www.mertonhistoricalsociety.org.uk. Walks and visits are held during the summer.

**Meetings and visits suspended until further notice**

---

### **The Norwood Society**

Local history talks are held on the 3rd Thursday of the month at 7.30pm at the Upper Norwood Library, Westow Hill SE19 1TJ. Entry is free, but a donation of £3 towards the cost of tea and homemade cakes would be much appreciated. For all enquiries, please contact Ruth Hibberd at: [membership@norwoodsociety.co.uk](mailto:membership@norwoodsociety.co.uk); website: [www.norwoodsociety.co.uk](http://www.norwoodsociety.co.uk)

**Hoping to reinstate talks from October**

---

### **Orpington and District Archaeological Society**

Meetings are held in Christ Church (United Reformed), Tudor Way, Petts Wood, BR5 1LH, on the first Wednesday of each month (except August and January) from 8.00pm. Non-members are welcome to attend, space permitting. For further information please contact Michael Meekums or Janet Clayton (020 8302 1572); website: [www.odas.org.uk](http://www.odas.org.uk)

All face-to-face meetings are currently suspended, and a programme of online meetings is being developed

---

### **Pinner Local History Society**

All meetings start at 8.00pm. Main meetings take place in the Village Hall, Pinner. Visitors are welcome for a donation of £3. For further information please contact: Janet Brooks, 33 Holwell Place, Pinner, Middlesex HA5 1DX (020 8429 1337 and 07980 366845); website: [www.pinnerlhs.org.uk](http://www.pinnerlhs.org.uk)

**2 September 2021**

**Annual General Meeting and Mrs Marshall's Cook's Other Half**, Terry Jenkins

**7 October 2021**

**St John the Baptist: the Evolution of a Parish Church**, Pat Clarke

**4 November 2021**

**Heathrow Airport: A Personal History**, Nick Hardey

**2 December 2021**

**A Boy's Memory of Pinner in the years after 1945**, Phillip Snell

---

### **Potters Bar and District Historical Society**

Meetings are held in the 60 Plus Room, Wyllyotts Centre, Potters Bar, Herts, starting at 8.00pm prompt. Visitors are welcome (admission £1). For further details please visit the website: <http://www.pottersbarhistory.uk>

**No information currently available on website**

---

### **Richmond Archaeological Society**

All lectures take place on the 2nd Friday of every month at the Vestry Rooms, Paradise Road, Richmond, Surrey at 8:00pm, and are free to members. Non-members are welcome to attend by giving a donation. Lectures currently by Zoom. For further information please visit the website: [www.richmondarchaeology.org.uk](http://www.richmondarchaeology.org.uk)  
Email: [richmond.archaeology@gmail.com](mailto:richmond.archaeology@gmail.com)

**No information currently available on website**

---

### **Richmond Local History Society**

Meetings are held on Mondays, if possible at Duke Street Church, Richmond, TW9 1DH at 8.00pm, or alternatively by Zoom. Visitors £4.00. Further information from the Secretary, Elizabeth Velluet (020 8891 3825); email: [rich.hist@yahoo.co.uk](mailto:rich.hist@yahoo.co.uk); website: <http://www.richmondhistory.org.uk>

**13 September 2021**

**Tracing the history of your house**, Melanie Backe-Hansen

**11 October 2021**

**The history of Sudbrook Park, Petersham**, Sandra Pullen

**8 November 2021**

**Sir Robert Walpole, Britain's first Prime Minister and his connections with Richmond**, Dr Simon Targett

**13 December 2021**

**Christmas traditions, with reference to Richmond and Kew, George Goodwin**

---

**Rotherhithe & Bermondsey Local History Society**

Unless otherwise stated, meetings take place at the Time and Talents Settlement, The Old Mortuary, St Marychurch Street, Rotherhithe, SE16 4JD, and begin at 7.15pm. Non-members welcome for a donation of £3. For more information please visit [www.rbhistory.org.uk](http://www.rbhistory.org.uk)

**Events currently suspended**

---

**Ruislip, Northwood and Eastcote Local History Society**

Meetings are usually held on the third Monday of each month from September to April at 8.15 pm at St Martins Church Hall, High Street, Ruislip. Visitors are welcome (£2 admission). If the public health situation requires on-line meetings, these will take place via Zoom and start at 8 pm on the dates in the programme. For further information and updates about our plans for meetings please visit our website, [www.RNELHS.org.uk](http://www.RNELHS.org.uk).

**20 September 2021**

**Dead Doubles - Ruislip and the Portland Spy Ring, Trevor Barnes**

**18 October 2021**

**Annual General Meeting and Harmondsworth and Ruislip Barns in their West Middlesex context, Dr Justine Bayley**

**15 November 2021**

**Lost Rivers of London, Dr Tom Bolton**

**20 December 2021**

**Members' Christmas Social Meeting**

---

**Southgate District Civic Voice**

The not for profit organisation covers Southgate, New Southgate, Cockfosters, Palmers Green, Winchmore Hill and Hadley Wood. Open Meetings are held twice a year at the Walker Hall, Waterfall Road, Southgate, and Local History meetings are held five times a year at the Friends Meeting House, Church Hill, Winchmore Hill. Non-members are welcome. For further information, contact Colin Barratt (020 8882 2246); email [info@southgatedistrictcivicvoice.org](mailto:info@southgatedistrictcivicvoice.org) or visit [www.southgatedistrictcivicvoice.org](http://www.southgatedistrictcivicvoice.org). The following meeting will place by Zoom:

**14 September 2021, 7.30pm**

**Making Gas and Creating a Memorial, Colin Barratt**

---

**Southwark & Lambeth Archaeological Society**

Lectures are held monthly on the second Tuesday at 7.30pm at the Housing Cooperative, 106 The Cut SE1, (direct entrance from the raised walkway), almost opposite the Old Vic. Coffee or tea and biscuits are available from 7.00 pm. Visitors are welcome but are asked to contribute £1 towards expenses. For further details please contact Richard Buchanan, 79 Ashridge Crescent, Shooter's Hill, London SE18 3EA; email: [RichardJBuchanan@aol.com](mailto:RichardJBuchanan@aol.com). For enquiries please call 020 8764 8314.

**No information currently available on website**

---

### **Spelthorne Archaeology and Local History Group**

Talks start at 8.00pm. Members free, non-members welcome (£2 admission). For further details please contact Nick Pollard (01932 564585); email [npollard@spelthornemuseum.org.uk](mailto:npollard@spelthornemuseum.org.uk); website [www.spelthornemuseum.org.uk](http://www.spelthornemuseum.org.uk). Venues to be advised, please check our website or contact Nick Pollard for details.

**2 September 2021**

**The Thames Locks and Weirs in Spelthorne**, Nick Pollard

**7 October 2021**

**Recent Finds in Surrey**, Simon Maslin

**4 November 2021**

**WH Crossland and the Royal Holloway College**, Sheila Binns

---

### **Stanmore and Harrow Historical Society**

Meetings are held at the Wealdstone Baptist Church, High Road, Wealdstone, at 8.00pm on Wednesdays, excluding July and August (visitors welcome at a charge of £3). For further information please contact The Secretary, [info@Stanmore-Harrow-Historical.org.uk](mailto:info@Stanmore-Harrow-Historical.org.uk); [www.stanmore-harrow-historical.org.uk](http://www.stanmore-harrow-historical.org.uk)

**All talks postponed until further notice**

---

### **Borough of Twickenham Local History Society**

Lectures are held at St Mary's Church Hall, Church Street, Twickenham, at 8.00pm on the first Monday of each month from October to May. Guests are welcome (£2.50). For further information please visit our website: [www.botlhs.co.uk](http://www.botlhs.co.uk)

**4 October 2021**

**Welcome Back Social** followed by **The Camp on Hounslow Heath**, Ed Harris

**1 November 2021**

**Bushy House**, Tony Drake

**6 December 2021**

**The Growth of Fulwell**, Dr Chris French

---

### **Uxbridge Local History and Archive Society**

All meetings take place at Christ Church, Redford Way (off Belmont Road), Uxbridge, starting at 7.30pm. For further information please contact Mr K.R. Pearce, 29 Norton Road, Uxbridge UB8 2PT; website: [www.eddiethecomputer.co.uk/history](http://www.eddiethecomputer.co.uk/history)

**No information currently available on website**

---

### **Walthamstow Historical Society**

Talks take place in the Large Hall in the Family Centre, St Gabriel's Church, Havant Road, Walthamstow E17 3JF (just off Wood Street.) at 7.45pm. For General enquiries please write to 55 Highfield Gardens, Aldershot, Hampshire, GU11 3DB; email: [whsenquiries@gmail.com](mailto:whsenquiries@gmail.com); website: [www.walthamstowhistoricalsociety.org.uk](http://www.walthamstowhistoricalsociety.org.uk)

**No information currently available on website**

---

### **Wandsworth Historical Society**

Meetings held at the Friends' Meeting House, Wandsworth High Street (opposite Town Hall) on the last Friday of the month at 8.00pm until 9.15pm (followed by tea and biscuits). All talks are being held online by Zoom. For more information, visit the website: [www.wandsworthhistory.org.uk](http://www.wandsworthhistory.org.uk)

**24 September 2021**

**Growing up in war-time Battersea**, Carol Rahn

**29 October 2021**

**An archaeological talk**, TBA

**26 November 2021**

**Members' Evening**, Short talks by members

---

### **West Drayton and District Local History Society**

Meetings are held on the last Tuesday of each month from September until May (excluding December) in St Martin's Church Hall, Church Road, West Drayton, starting at 7.30pm. For further information please contact Kay Tarrant (Programme Secretary), 15 Brooklyn Way, West Drayton UB7 7PD (01895 444246).

**No information currently available**

---

### **Willesden Local History Society**

The Society meets on Wednesdays from September to June at 7.30pm in St Mary's Parish Centre, which is in Neasden Lane adjacent to the churchyard. For further information please contact the Secretary, Margaret Pratt, 51 West Ella Road, London NW10 9PT (020 8965 7230); website: [www.willesden-local-history.co.uk](http://www.willesden-local-history.co.uk). All meetings currently online for members; non-members should visit the website.

**15 September 2021**

**St Paul's Church Kilburn Square, Kilburn Polytechnic & Grammar School**, Alan Hovell

**20 October 2021**

**The General Strike in the 1920s**, Chris Coates.

**17 November 2021**

**Gladstone Park – a Garden History**, Antonia Couling

---

**London and Middlesex Archaeological Society**  
**Museum of London, 150 London Wall, London EC2Y 5HN**  
**Telephone: 020 7410 2228 Fax: 0870 444 3853**

**President**

Gillian Tindall  
president@lomas.org.uk

**Chair of Council**

Harvey Sheldon (07821 646059)  
harveysheldon@gmail.com  
112 Oglander Road  
London SE15 4DB

**Honorary Secretary and  
Honorary Publications Assistant**

Karen Thomas (020 8989 9683)  
secretary@lomas.org.uk  
58 Ashbourne Avenue, South Woodford  
London E18 1PL

**Honorary Subscriptions and  
Membership Secretary**

Fiona Haughey  
membership@lomas.org.uk  
27 Spring Grove, Strand-on-the-Green  
London W4 3NH

**Honorary Director of Lecture Meetings**

Kathryn Stubbs (020 7332 1447)  
lectures@lomas.org.uk

**Honorary Treasurer**

Malcolm Mac Lellan  
treasurer@lomas.org.uk  
Flat B, 19 Hornsey Rise Gardens  
London N19 3PP

**Honorary Librarian**

Lluis Tembleque Teres (020 7814 5588)  
ltembleque@museumoflondon.org.uk  
Museum of London  
150 London Wall  
London EC2Y 5HN

**Honorary Publicity Officer**

Luisa Duarte  
lduarte@museumoflondon.org.uk  
Museum of London  
150 London Wall  
London EC2Y 5HN

**Honorary Editor, *Newsletter***

Richard Gilpin (020 3774 6726)  
rdbg.lamas@gmail.com  
84 Lock Chase  
Blackheath  
London SE3 9HA

**Archaeology Committee  
Secretary**

Jon Cotton (020 8549 3167)  
joncotton1956@gmail.com  
58 Grove Lane, Kingston upon Thames  
KT1 2SR

**Greater London Local History  
Committee Chair**

John Price  
j.price@gold.ac.uk

**Historic Buildings and Conservation  
Committee Secretary**

Vicki Fox  
vickifox2020@outlook.com

**Publications Committee Chair  
and Reviews Editor, *Transactions***

John Schofield (020 8741 3573)  
john@jschd.co.uk  
2 Carthew Villas, London W6 0BS

**Production Editor, *Transactions***

Trevor Brigham (01723 518400)  
trevbrigham@gmail.com  
Summerfield Cottage,  
2 Mount Pleasant,  
Muston, N Yorks YO14 0EJ

**Honorary Archaeological Editor,  
*Transactions***

Bruce Watson  
johnwatson111@talktalk.net

**Honorary History Editor,  
*Transactions***

Maggie Bolton (07746 964482)  
mebolton01732@gmail.com

**LAMAS is a Registered Charity, No. 267552**