

INSTRUCTIONS:




Choose Your Token

Each player selects a barge/tug boat token and places it on the START space.

Rolling the Dice

On your turn, roll one die and move your barge/tug boat forward the number of spaces shown.

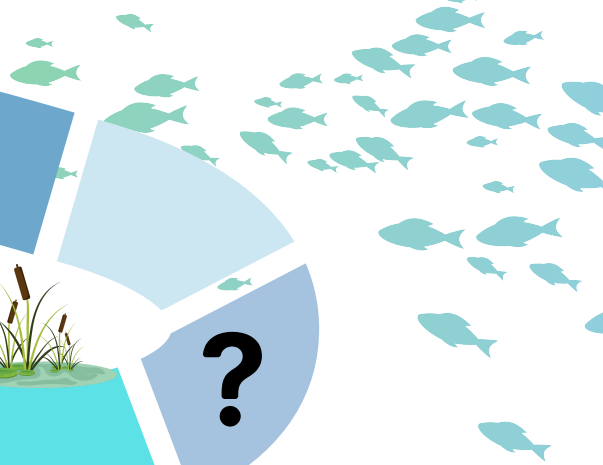
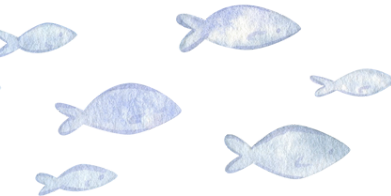
Special Spaces

- Lock Icon  | If you land on a lock, you lose your next turn — you're waiting for the water level to adjust.
- Dam Icon  | Every player is required to stop at the dam even if you rolled a higher number. Dams stop water — and you!
- Question Mark Icon  | Land here and have the player on your right ask you a question from the question cards.
 - Correct answer: Move forward 1 space.
 - Incorrect answer: Move back 1 space.
- Blank Spaces | This is a free space. You're cruising smoothly down the river — no obstacles here!

Winning the Game: The first player to reach the end of the river wins!

RIVER RUSH

START



What does a dam do?

Which of the following is something dams can help with?

True or False: Boats can float past a dam without help.

What helps boats move up or down a river?

A lock works like a(n) _____ for boats.

What is inside a lock?

True or False: When the water level inside the lock does NOT match the next part of the river, the boat moves on.

True or False: A dam is built to stop or control the flow of water.

- a. Speeds up water
- b. **Blocks or slows down water**
- c. Makes boats go faster

- a. To control flooding
- b. Produce electricity
- c. Keep water levels steady
- d. **All of the above**

False

- a. A bridge
- b. A tunnel
- c. **A lock**

- a. A bridge
- b. A tunnel
- c. A lock

- a. A water slide
- b. **A chamber with gates**
- c. A waterfall

False

True

Which state is the second-largest corn producer in the U.S?

What percent of Illinois corn is sold to other states/countries?

True or False: Dams help make electricity.

What do locks and dams make easier?

How does a lock lift a boat?

What is inside a lock?

True or False: When the water level inside the lock does NOT match the next part of the river, the boat moves on.

True or False: A dam is built to stop or control the flow of water.

- a. **Illinois**
- b. Ohio
- c. Indiana

- a. 10%
- b. **48%**
- c. 90%

True

- a. Swimming
- b. **Traveling by boat**
- c. Fishing

- a. With a crane
- b. With air
- c. **By filling with water**

- a. A water slide
- b. A chamber with gates
- c. A waterfall

False

True