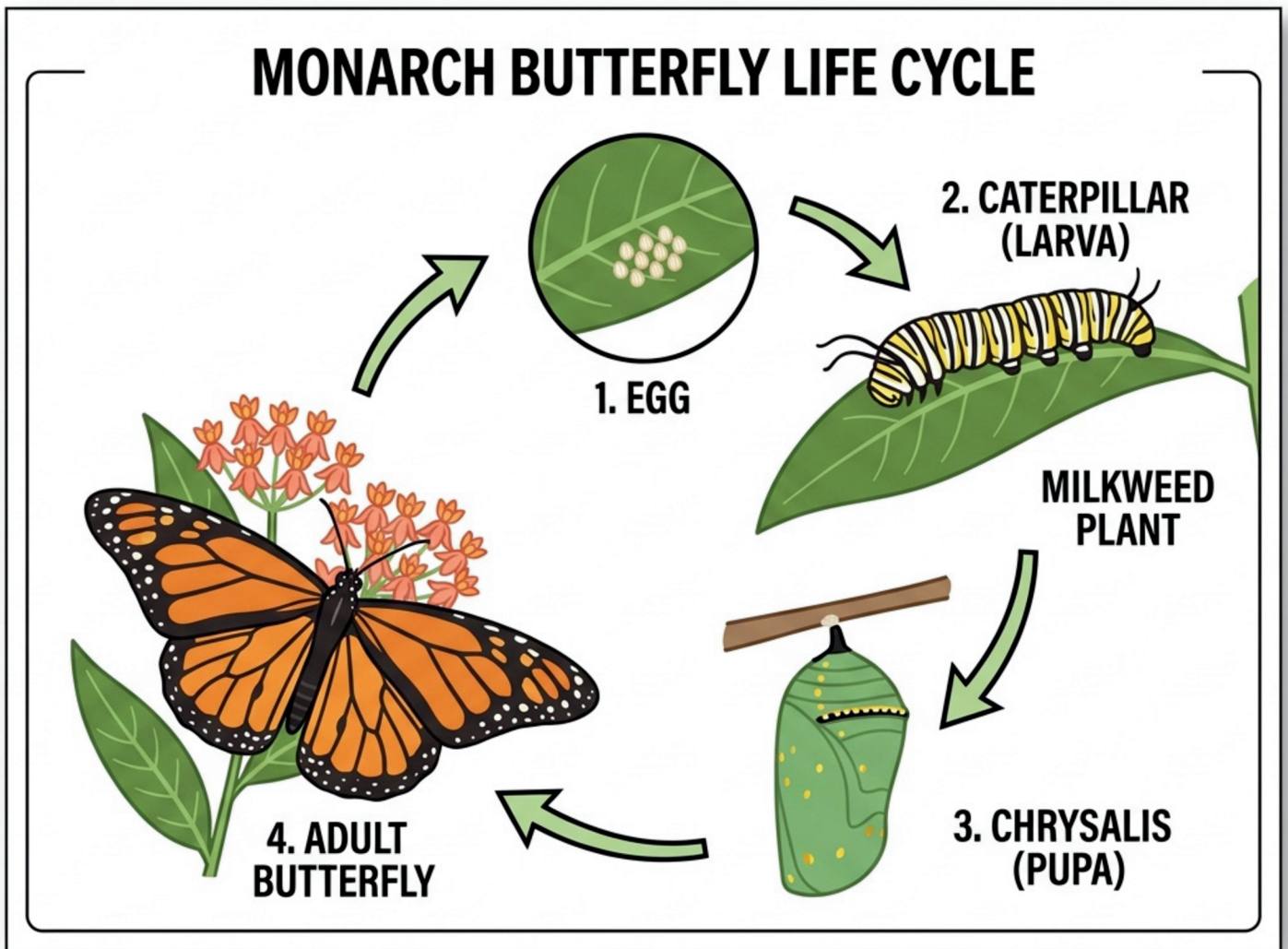


## MONARCH BUTTERFLY LIFE CYCLE



## HOW FARMERS HELP MONARCHS

- Farmers plant milkweed, the only food monarch caterpillars eat
- They create safe spaces along field edges for pollinators
- They use advanced technology to apply crop protection products carefully

### Did you know?

Monarch butterflies travel thousands of miles and Illinois is one of their most important stops!

## **Illinois Schools: Bring Pollinator Education to Your Campus**

Illinois corn farmers know that healthy ecosystems support healthy farms and that includes pollinators. Through our farmer-led pollinator initiative, we're donating milkweed seed blends to schools across Illinois to help create small pollinator habitats right on school grounds.

### **What We're Donating**

Each participating school will receive:

- A regionally appropriate milkweed seed blend
- Basic planting guidance
- Educational resources to connect the habitat to classroom learning

Milkweed is essential for monarch butterflies and supports a wide range of pollinators that are critical to Illinois agriculture.

### **Why Your School Should Participate**

- Creating a small pollinator plot:
  - Provides hands-on STEM learning
  - Demonstrates environmental stewardship
  - Connects students to local agriculture
  - Offers real-world lessons in biology, ecology, conservation, and food systems

Even a small garden space can become a living classroom.

### **Classroom Tie-Ins**

Schools can easily connect the habitat to lessons in:

- Life cycles & biology (monarch butterfly migration)
- Environmental science (ecosystems, biodiversity, soil health)
- Agriculture education (the role of pollinators in food production)
- Data collection & math (tracking plant growth or butterfly sightings)
- Art & writing projects inspired by nature

This is a simple, meaningful way to show students how farmers and communities can work together to support conservation.

If your school is interested in participating, contact us at [marketing@ilcorn.org](mailto:marketing@ilcorn.org) with your school information.