

DATA CENTER SERVICES

Portfolio Overview



END-TO-END EXPERTS IN DATA CENTER INFRASTRUCTURE

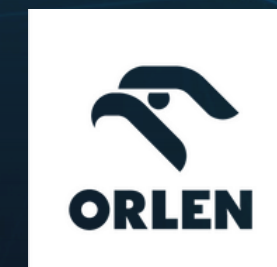
We are a specialized data center infrastructure partner, delivering services across **design, construction, operations, and product integration**. From **hyperscale builds to edge retrofits**, we serve EMEA-based enterprises with scalable, efficient, and Tier-compliant infrastructure — including advanced support for **AI, HPC, and liquid-cooled environments**.



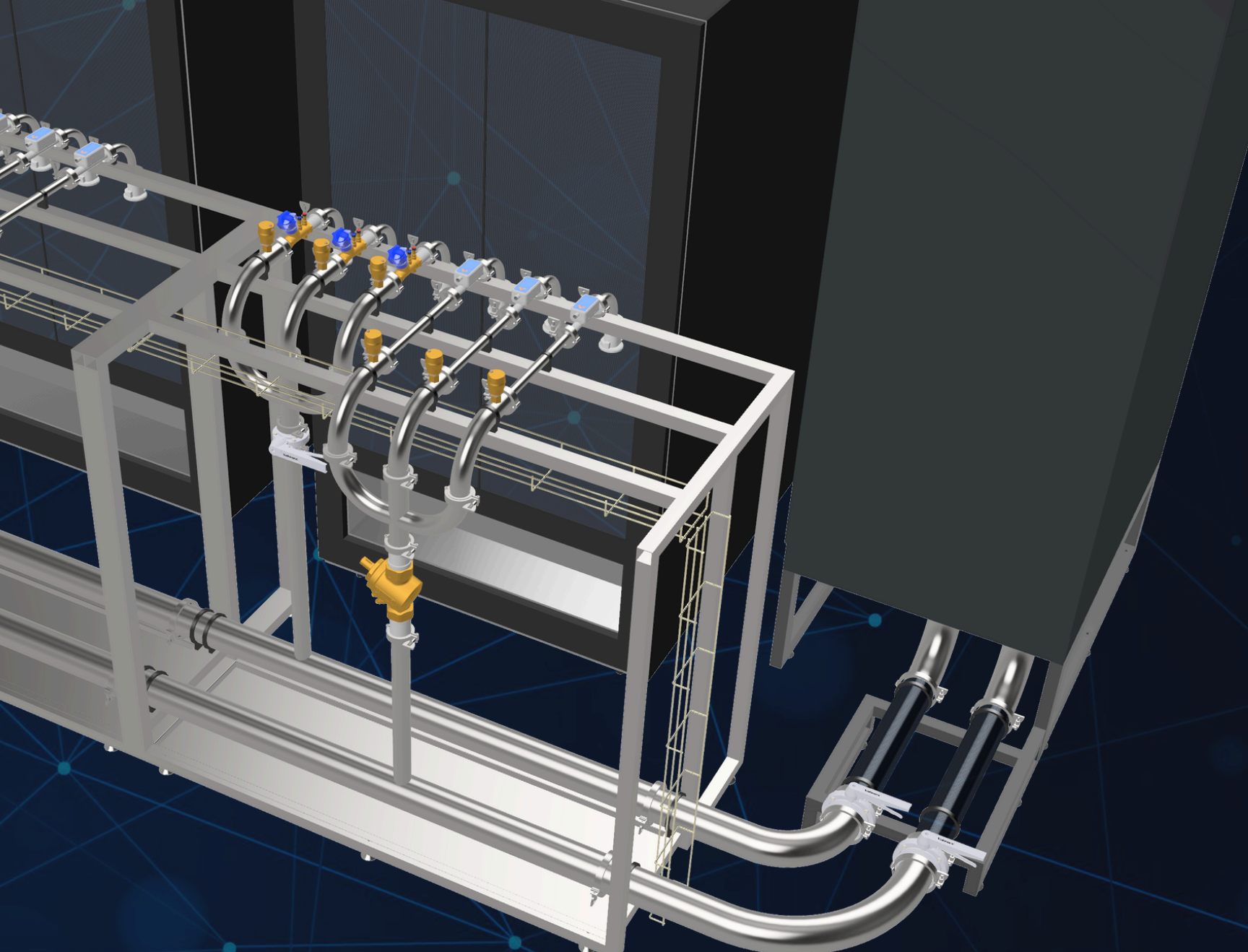
CLIENT REFERENCES

The Lenovo logo, consisting of the word 'Lenovo' in white sans-serif font on a red rectangular background.

The Citi logo, featuring the word 'citi' in a blue sans-serif font with a red arc above the 'i'.



The sdi logo, with the lowercase letters 'sdi' in a blue, italicized sans-serif font, followed by a small red dot.



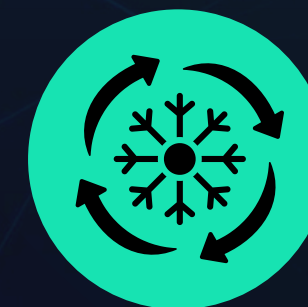
DESIGN & DEVELOPMENT



**CONSTRUCTION & RETROFIT
SERVICES**



OPERATIONS & MAINTENANCE



**LIQUID COOLING & SECONDARY
FLUID NETWORK DESIGN**

DATA CENTER SERVICES

DATA CENTER DESIGN & RETROFIT SERVICES

SCALABLE DATA CENTER INFRASTRUCTURE — ENGINEERED FOR NEW BUILDS, OPTIMIZED FOR RETROFIT.



SPACE PLANNING

- CARRIER TAKE ROOMS
- WHITE SPACES
- UPS ROOMS
- BATTERY ROOM
- SECURITY AREA
- OFFICE SPACE
- PATHWAY DESIGN PLANNING



RACK INFRASTRUCTURE

- CARRIER CABINETS
- NETWORK HEAD END
- COLOCATION, SERVER AND STANDALONE RACKS
- 4POST RACK
- NETWORK RACK
- COLD ISLE CONTAINMENT SYSTEMS



STRUCTURED CABLING

- DESIGN & CONSULTING
- OPTICAL OR COPPER ACTIVE / PASSIVE SYSTEMS
- SERVER ROOM AND DATA CABLING
- INSTALLATION SERVICES
- MOVES, ADDS, AND CHANGES (MACS) SUPPORT
- CCTV AND SECURITY SYSTEMS CABLING



POWER DISTRIBUTION

- RACK POWER SYSTEMS: RACK, PDU, RACK ATS
- REMOTE POWERED PANELS (RPP'S)
- POWER CABINET
- CABLING
- SWITCHGEAR SYSTEMS
- UPS
- GENERATORS

DATA CENTER DESIGN & RETROFIT SERVICES

SCALABLE DATA CENTER INFRASTRUCTURE — ENGINEERED FOR NEW BUILDS, OPTIMIZED FOR RETROFIT.



COOLING SYSTEMS

- INDOOR COOLING (CRAC UNITS, IN-ROW COOLING UNITS, AIR HANDLERS, IN-RACK COOLING, LIQUID COOLING (CDU))
- EXTERNAL COOLING (DRY COOLERS, CHILLERS, FREE COOLING)
- PIPING SYSTEMS



SECURITY SYSTEMS

- PHYSICAL PROTECTION
- ACCESS CONTROL SYSTEMS
- ENTRY GATES
- INTRUSION ALARM SYSTEM
- SURVEILLANCE CAMERAS



ACTIVE EQUIPMENT INTEGRATION

- NETWORK SERVERS
- STANDALONE AI SERVERS

OPERATIONS & MAINTENANCE

LIFECYCLE SUPPORT FOR MISSION-CRITICAL INFRASTRUCTURE



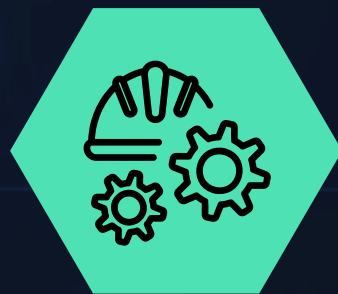
REAL-TIME MONITORING

of power, cooling, and
environment



PLANNED PREVENTIVE MAINTENANCE (PPM)

in line with manufacturer
requirements



SPARE PARTS MANAGEMENT

and replacement
logistics



CORRECTIVE MAINTENANCE

and rapid fault
resolution



ASSET LIFECYCLE MANAGEMENT

and performance
tracking



HIGH-DENSITY / LIQUID- COOLED ENVIRONMENTS

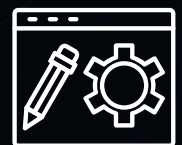
maintenance and
spare parts

LIQUID COOLING & SECONDARY FLUID NETWORK TURNKEY SERVICES

 **VERTIV™ - APPROVED END-TO-END LIQUID COOLING SOLUTIONS**

01

**Conceptual
Design**



3D Concept Designs

02

**Technical
Design**



**Secondary fluid
network manufacturing**

03

**Manufacturing
& Installation**

04

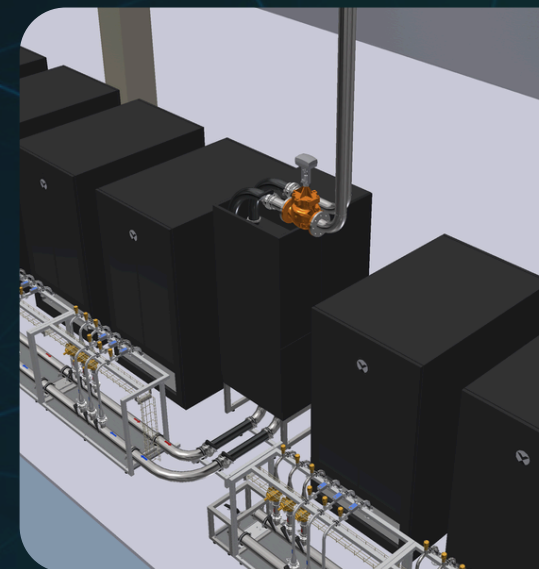
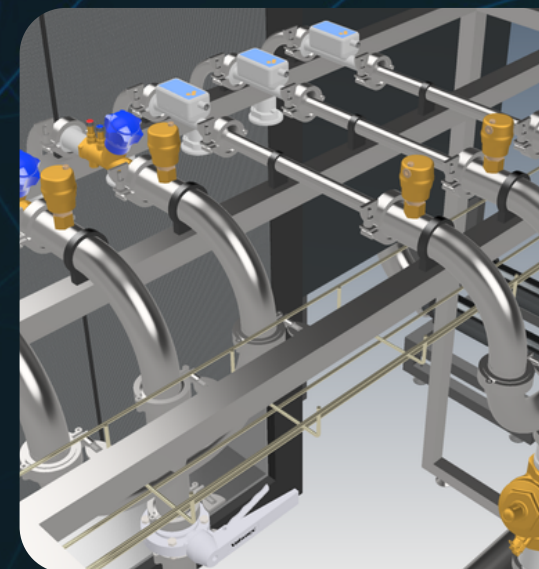
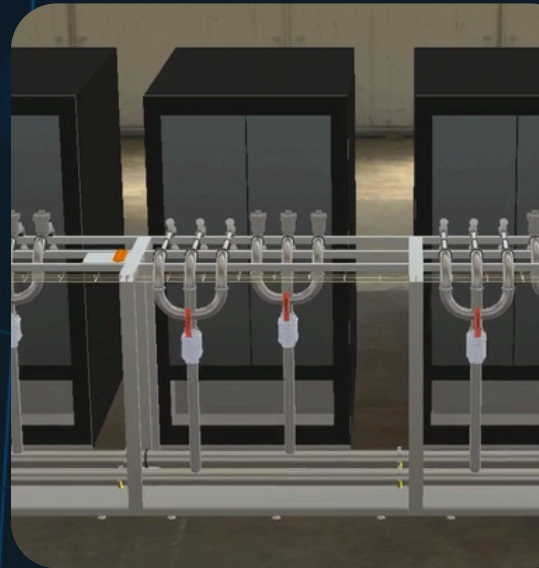
**Commissioning
& Startup
Services**



**CDU self-installation
and maintenance**

05

**Maintenance
& Support**



CONNECT WITH US:



+3630/366-4600



info@digitechold.com



www.digitechold.com

