

U8 Modified Rules

Law 1 – The Field of Play

Dimensions: As determined by the club.

Law 2 – The Ball: Size four (4).

Law 3 – The Number of Players: As rostered (7v7, 8v8, etc)

GK is in use.

Substitutions: At any stoppage of play and unlimited.

Playing time:

Warm Up: 5 Minutes

First Quarter: 10 Minutes

Second Quarter: 10 Minutes

Halftime: 5 Minutes

Third Quarter: 10 Minutes

Fourth Quarter: 10 Minutes.

There will be a rest period between quarters.

Law 4 – The Players' Equipment: Conform to FIFA. Non-uniform clothing is allowed

based on weather conditions, but uniforms must still distinguish teams. All players must wear shin guards under their socks.

Law 5 – The Referee: An OFFICIAL may be used. All infringements shall be briefly explained to the offending player.

Law 6 – The Assistant Referees: As assigned.

Law 7 – The Duration of the Match: The match shall be divided as stated in Law 3

Law 8 – The Start and Restart of Play: Conform to FIFA, with the exception of the opponents of the team taking the kick-off are at least four (4) yards from the ball until it is in play. Build-out line is in effect (see build-out line on last page)

Law 9 – The Ball In and Out of Play: Conform to FIFA.

Law 10 – The Method of Scoring: Conform to FIFA.

Law 11 – Offside: None.

Law 12 – Fouls and Misconduct: Conform to FIFA with the exception that all fouls shall result in a direct free kick. The referee/coach/parent must explain ALL infringements to the offending player. No cards shown for misconduct.

Law 13 – Free Kicks: Conform to FIFA with the exceptions that all kicks are direct and all opponents are at least four (4) yards from the ball until it is in play.

Law 14 – The Penalty Kick: None.

Law 15 – The Throw-In: Conform to FIFA.

Law 16 – The Goal Kick: The goal kick should be taken anywhere within the goal area. Opposing players must be outside the goal area AND at least four (4) yards away from the ball until it is in play. It is suggested that if necessary that opponents are in their own half of the field until the ball is in play.

Law 17 – The Corner Kick: Conform to FIFA with the exception that opponents remain at least four (4) yards from the ball until it is in play.

Addendum:

No heading.

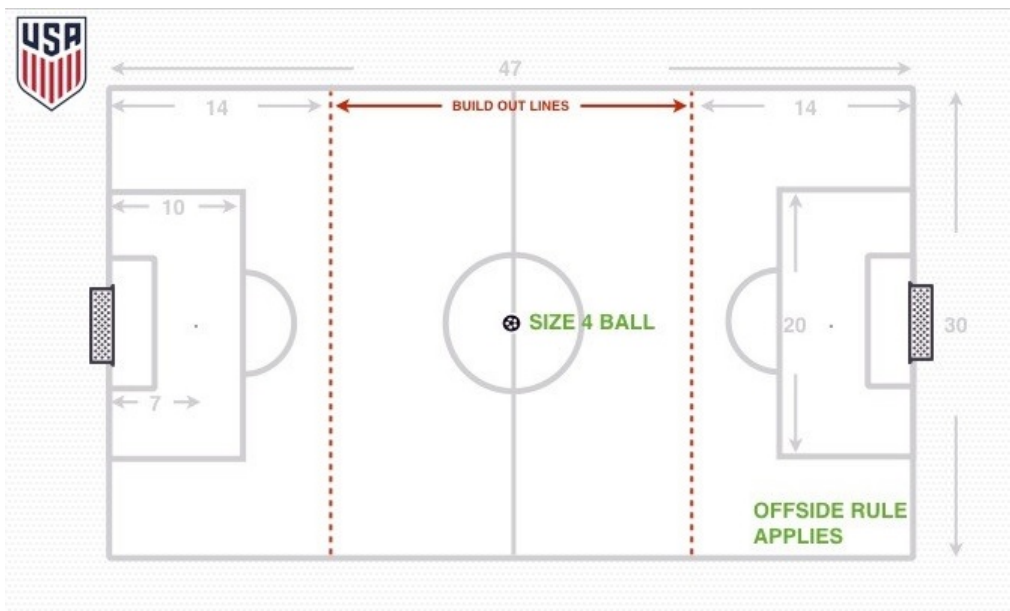
No slide tackling.

No contact will be made with the goalkeeper who has possession of the ball. A goalkeeper with one finger on the ball is considered to have possession

Build-Out Line. A Build-Out Line is a line across the width of the field of play mid-way between the top of the penalty area and the half-way line in each half. They should be equidistant between the penalty area line and the halfway line.

Key Points to understand the Build out Line

- ✓ When the goalkeeper has the ball in his or her hands during play from the opponent, the opposing team must move behind the build out line until the ball is put into play and a second touch is made by another player on the goalkeeper's team.
- ✓ Once the opposing team is behind the build out line, the goalkeeper can pass, throw or roll the ball into play (punts and drop kicks are not allowed).
- ✓ After the ball is put into play by the goalkeeper, and a second touch is made by another player on the goalkeeper's team, the opposing team can cross the build out line and play resumes as normal
- ✓ If the ball crosses the build out line before the second touch occurs, the opposing team may cross the build out line and play resumes as normal
- ✓ The Build out line will also count as the line to assess where offside offenses occur
- ✓ Players cannot be penalized for an offside offense between halfway line and build out line
- ✓ Players can be penalized for an offside offense between the build out line and goal line
- ✓ Diagram with the recommended field markings and dimensions (adapted for use on Sandhill fields).



U10 Modified Rules

Law 1 – The Field of Play

Dimensions: As determined by the club.

Law 2 – The Ball: Size four (4).

Law 3 – The Number of Players: As rostered (7v7, 8v8, etc)

GK is in use.

Substitutions: At any stoppage of play and unlimited.

Warm Up: 15 Minutes

First Half: 25 Minutes

Halftime: 5 Minutes

Second Half: 25 Minutes

Law 4 – The Players' Equipment: Conform to FIFA. Non-uniform clothing is allowed based on weather conditions, but uniforms must still distinguish teams. All players must wear shin guards under their socks.

Law 5 – The Referee: An OFFICIAL may be used. All infringements shall be briefly explained to the offending player.

Law 6 – The Assistant Referees: Not required. May use club linesmen if desired.

Law 7 – The Duration of the Match: As noted in Law 3

Law 8 – The Start and Restart of Play: Conform to FIFA with the exception of the opponents of the team taking the kick-off are at least eight (8) yards from the ball until it is in play.

Law 9 – The Ball In and Out of Play: Conform to FIFA.

Law 10 – The Method of Scoring: Conform to FIFA.

Law 11 – Offside: Offside will not be called unless the player is clearly in an offside position. This will be called at the referee's discretion.

Law 12 – Fouls and Misconduct: Conform to FIFA with the exception that an indirect free kick is awarded to the opposing team at the center spot on the halfway line if a goalkeeper punts or drop-kicks the ball in the air from his/her penalty area into the opponents penalty area.

Law 13 – Free Kicks: Conform to FIFA with the exception that all opponents are at least eight (8) yards from the ball.

Law 14 – The Penalty Kick: Conform to FIFA with the exception that the penalty mark is

made eight (8) yards from the midpoint between the goalposts and equidistant to them.

Law 15 – The Throw-In: Conform to FIFA.

Law 16 – The Goal Kick: Conform to FIFA.

Law 17 – The Corner Kick: Conform to FIFA with the exception that opponents remain at least eight (8) yards from the ball until it is in play

Addendum:

No heading.

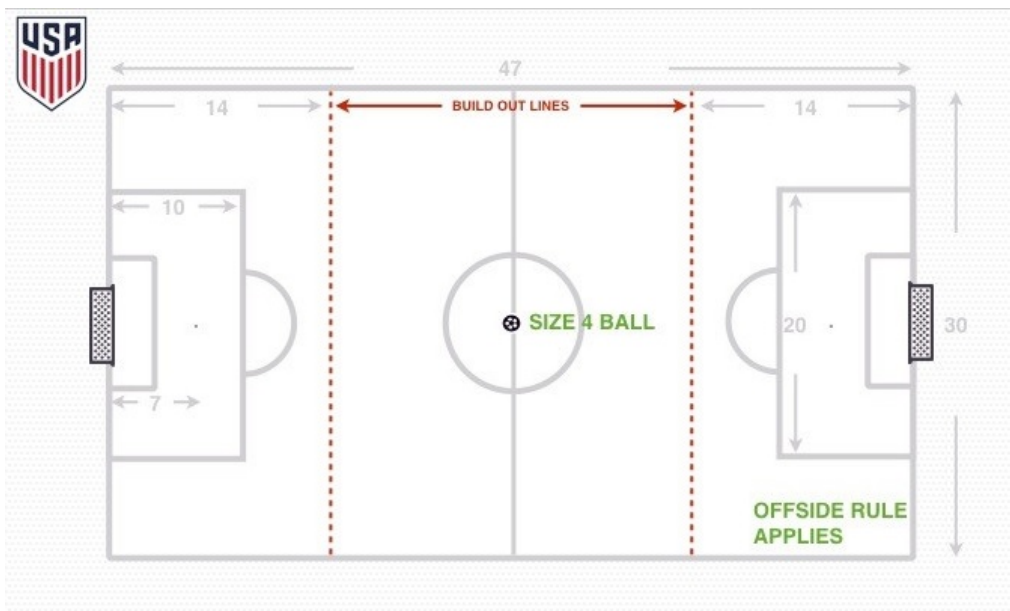
No slide tackling.

No contact will be made with the goalkeeper who has possession of the ball. A goalkeeper with one finger on the ball is considered to have possession

Build-Out Line. A Build-Out Line is a line across the width of the field of play mid-way between the top of the penalty area and the half-way line in each half. They should be equidistant between the penalty area line and the halfway line.

Key Points to understand the Build out Line

- ✓ When the goalkeeper has the ball in his or her hands during play from the opponent, the opposing team must move behind the build out line until the ball is put into play.
- ✓ Once the opposing team is behind the build out line, the goalkeeper can pass, throw or roll the ball into play (punts and drop kicks are not allowed).
- ✓ After the ball is put into play by the goalkeeper, the opposing team can cross the build out line and play resumes as normal.
- ✓ The Build out line will also count as the line to assess where offside offenses occur
- ✓ Players cannot be penalized for an offside offense between halfway line and build out line
- ✓ Players can be penalized for an offside offense between the build out line and goal line
- ✓ Diagram with the recommended field markings and dimensions (adapted for use on Sandhill fields).



U12 Modified Rules

Law 1 – The Field of Play

Dimensions: As determined by the club.

Law 2 – The Ball: Size four (4).

Law 3 – The Number of Players: As rostered (7v7, 8v8, etc)

GK is in use.

Warm Up: 15 Minutes

First Half: 25 Minutes

Halftime: 5 Minutes

Second Half: 25 Minutes

Substitutions: At any stoppage and unlimited.

Law 4 – The Players Equipment: Conform to FIFA. Non-uniform clothing is allowed

based on weather conditions, but uniforms must still distinguish teams. All players must wear shin guards under their socks.

Law 5 – The Referee: Club referee.

Law 6 – The Assistant Referee: Use club referee if available.

Law 7 – The Duration of the Match: as outlined in Law 3

Law 8 – The Start and Restart of Play: Conform to FIFA with the exception that

opponents of the team taking the kick-off are at least eight (8) yards from the ball until it is in play.

Law 9 – The Ball In and Out of Play: Conform to FIFA.

Law 10 – The Method of Scoring: Conform to FIFA.

Law 11 – Offside: Conform to FIFA.

Law 12 – Fouls and Misconduct: Conform to FIFA with the exception that an indirect

free kick is awarded to the opposing team at the center spot on the halfway line if a goalkeeper punts or drop-kicks the ball in the air from his/her penalty area into the opponents penalty area.

Law 13 – Free Kicks: Conform to FIFA with the exception that opponents are at least eight (8) yards from the ball.

Law 14 – The Penalty Kick: Conform to FIFA with the exceptions that the penalty mark is at ten yards and that players other than the kicker and defending goalkeeper are at least eight (8) yards from the penalty mark.

Law 15 – The Throw-In: Conform to FIFA.

Law 16 – The Goal Kick: Conform to FIFA.

Law 17 – The Corner Kick: Conform to FIFA with the exception that opponents remain at least eight (8) yards away from the ball until it is in play

Addendum:

No heading.

No slide tackling.

No contact will be made with the goalkeeper who has possession of the ball. A goalkeeper with one finger on the ball is considered to have possession

U15 Modified Rules

Law 1 – The Field of Play

Dimensions: As determined by the club.

Law 2 – The Ball: Size five (5).

Law 3 – The Number of Players: As rostered (7v7, 8v8, etc)

GK is in use.

10-15 minutes to Warm Up, Two - 20-minute halves with a 5-minute half time. There will be referees working your games. ALL GAMES WILL BE 6v6. Five field players and a GK. A field map will be available once Sand Hill provides us with one. The schedule will be available at the pavilion each week.

Warm Up: 15 Minutes

First Half: 25 Minutes

Halftime: 5 Minutes

Second Half: 25 Minutes

Law 4 – The Players Equipment: Conform to FIFA. Non-uniform clothing is allowed based on weather conditions, but uniforms must still distinguish teams. All players must wear shin guards under their socks.

Law 5 – The Referee: Club referee.

Law 6 – The Assistant Referee: Use club referee if available.

Law 7 – The Duration of the Match: as outlined in Law 3

Law 8 – The Start and Restart of Play: Conform to FIFA .

Law 9 – The Ball In and Out of Play: Conform to FIFA.

Law 10 – The Method of Scoring: Conform to FIFA.

Law 11 – Offside: Conform to FIFA.

Law 12 – Fouls and Misconduct: Conform to FIFA..

Law 13 – Free Kicks: Conform to FIFA.

Law 14 – The Penalty Kick: Conform to FIFA.

Law 15 – The Throw-In: Conform to FIFA.

Law 16 – The Goal Kick: Conform to FIFA.

Law 17 – The Corner Kick: Conform to FIFA.

Addendum:

Heading is allowed.

No slide tackling.

No contact will be made with the goalkeeper who has possession of the ball. A goalkeeper with one hand on the ball is considered to have possession