

PARKi

OFF STREET
PARKING
MANAGEMENT

ULTRASLIM ENTRY AND EXIT STATION

Designed to support multiple entry and exit car parking applications including a range of unmanned solutions.



MADE IN AUSTRALIA

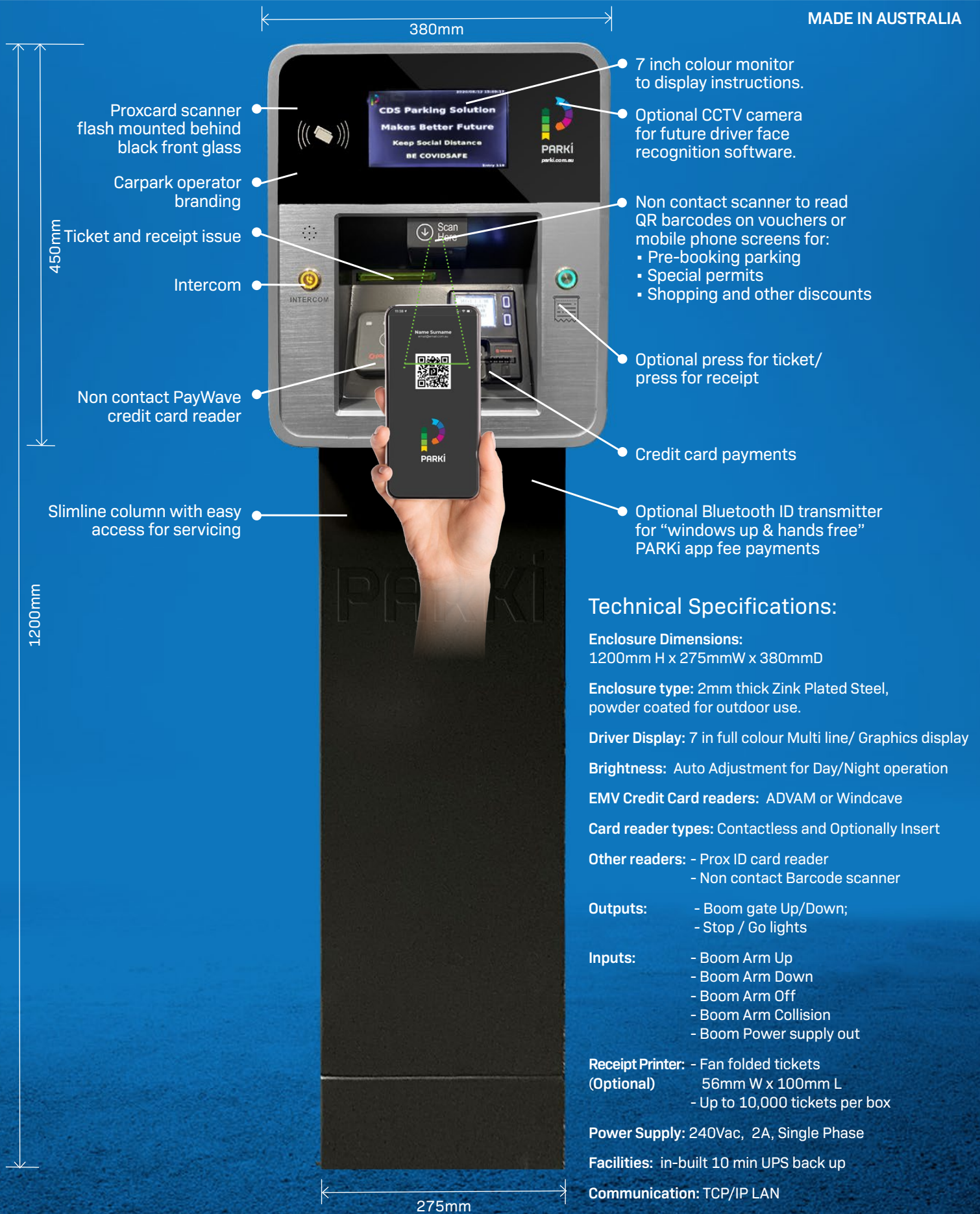


PARKi

OFF STREET PARKING MANAGEMENT



MADE IN AUSTRALIA



Proxcard scanner
flash mounted behind
black front glass

Carpark operator
branding

Ticket and receipt issue

Intercom

Non contact PayWave
credit card reader

Slimline column with easy
access for servicing

380mm

7 inch colour monitor
to display instructions.

Optional CCTV camera
for future driver face
recognition software.

Non contact scanner to read
QR barcodes on vouchers or
mobile phone screens for:
▪ Pre-booking parking
▪ Special permits
▪ Shopping and other discounts

Optional press for ticket/
press for receipt

Credit card payments

Optional Bluetooth ID transmitter
for "windows up & hands free"
PARKi app fee payments

1200mm

275mm

Technical Specifications:

Enclosure Dimensions:

1200mm H x 275mmW x 380mmD

Enclosure type: 2mm thick Zink Plated Steel,
powder coated for outdoor use.

Driver Display: 7 in full colour Multi line/ Graphics display

Brightness: Auto Adjustment for Day/Night operation

EMV Credit Card readers: ADVAM or Windcave

Card reader types: Contactless and Optionally Insert

Other readers: - Prox ID card reader
- Non contact Barcode scanner

Outputs: - Boom gate Up/Down;
- Stop / Go lights

Inputs: - Boom Arm Up
- Boom Arm Down
- Boom Arm Off
- Boom Arm Collision
- Boom Power supply out

Receipt Printer: - Fan folded tickets
(Optional) 56mm W x 100mm L
- Up to 10,000 tickets per box

Power Supply: 240Vac, 2A, Single Phase

Facilities: in-built 10 min UPS back up

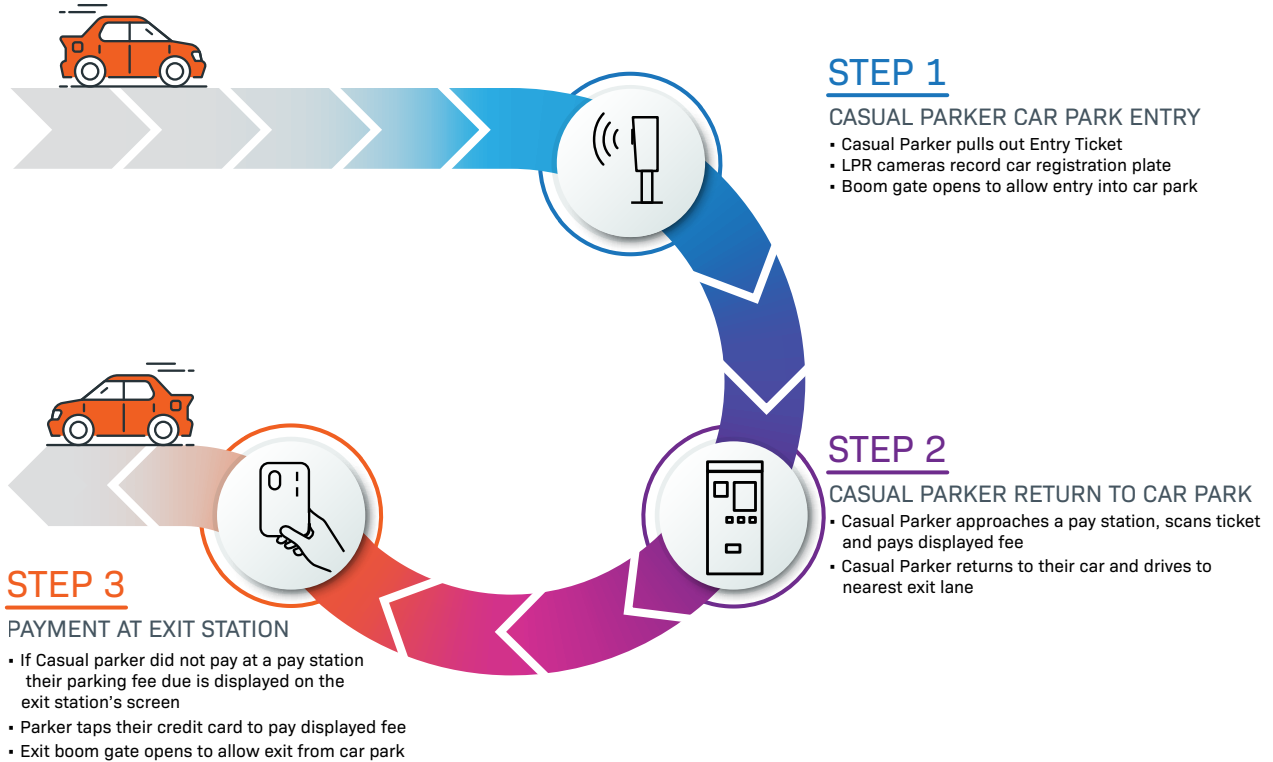
Communication: TCP/IP LAN

PARKi

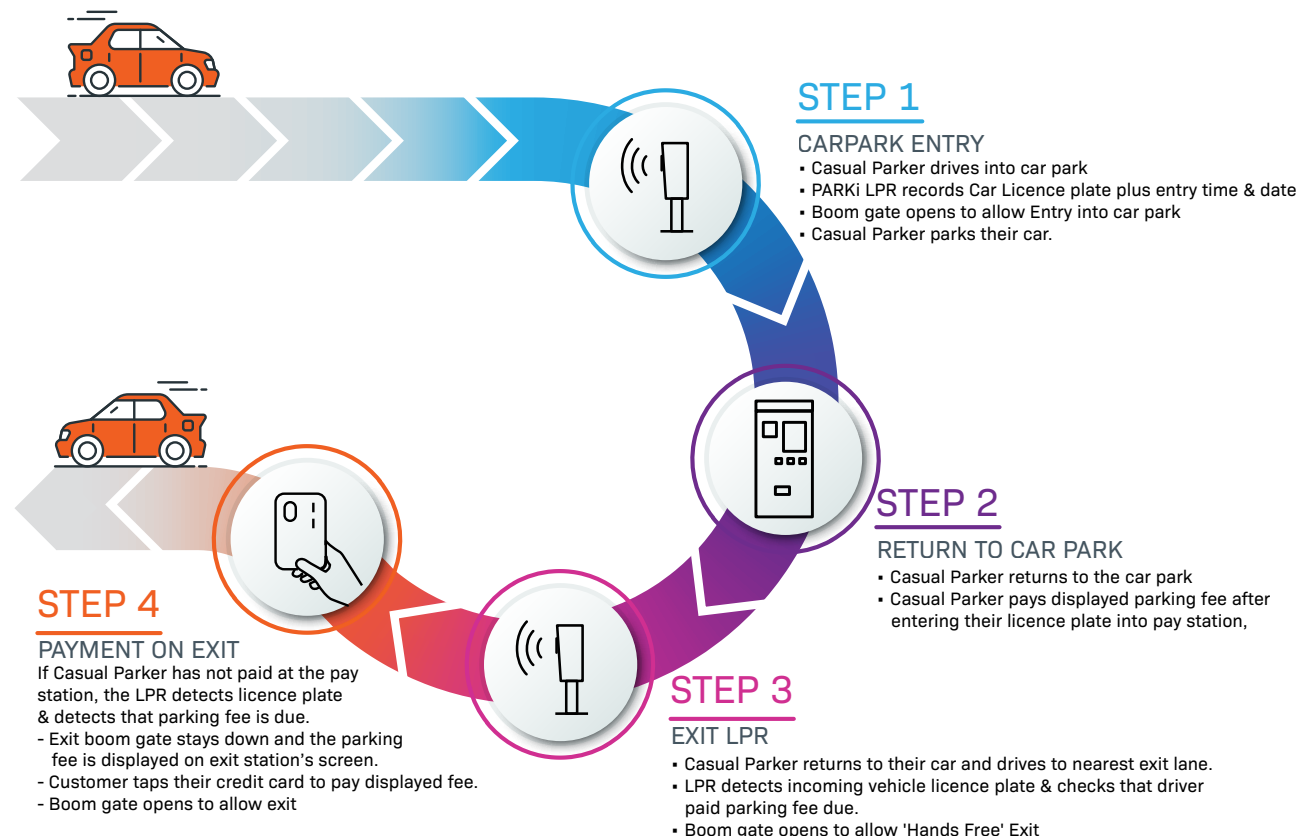
OFF STREET PARKING MANAGEMENT



Ticketed entry for Casual Parkers', Prox card entry for Permanent, Barcode scan entry for Pre-booked Parkers', Visitors and Permit holders with or without Licence Plate Recognition equipment (LPR)



LPR Ticket-less entry for Casual parkers



ULTRASLIM ENTRY AND EXIT STATION

Typical Car Park Entry and Exit Lanes layout



TERMS AND CONDIT

By entering and proceeding to park a
agreed to be bound by these contract
any of these terms, you must immedi
park.

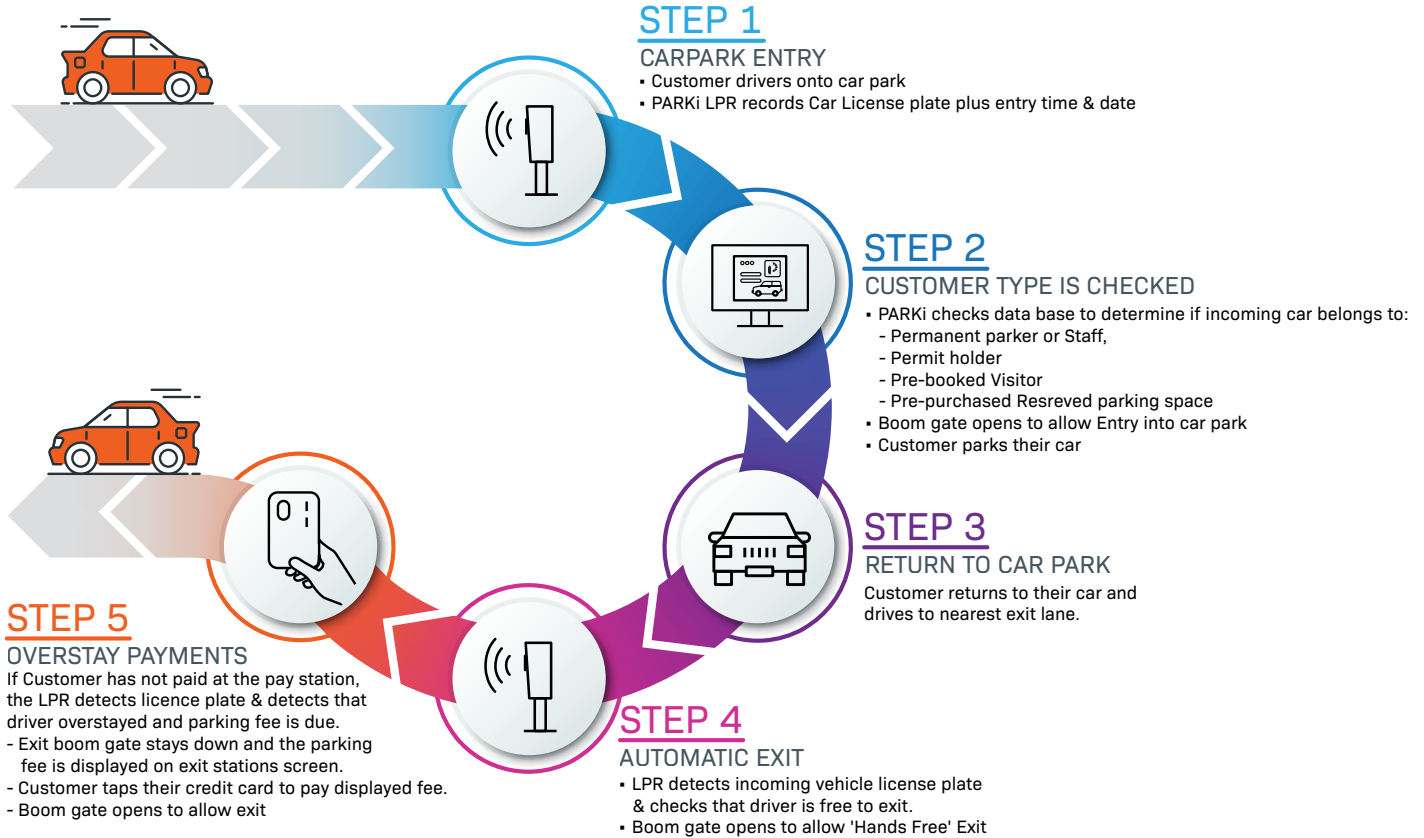
1. You must:
 - (a) comply with all rules and directions
any directions given to you by our staff
 - (b) pay the required fees and other co
to the vehicle upon demand. A further
vehicle enters this car park. If you lo
be presented upon leaving the car par
daily fee or the lost ticket fee (which
transferable and are valid for only one
 - (c) comply with all parking signs and o
or markings that constitute marked par
 - (d) not park your vehicle:
 - In a way that is contrary to any inst
 - In any area that is designated as a
 - In an area marked reserved or per
 - In any place that obstructs any inte
2. We will exercise all required cons in the
required by the Australian Consumer L
legislation. Apart from this statutory lia
damage suffered by you as a result of
lost, contract or otherwise or for anyth
Contractual Terms and Conditions.
3. If you leave the keys to the Vehicle wit
its keys to any person producing a pass
receive the vehicle which we may in ou
satisfactory and we shall not be liable fi
as a consequence.
4. This contract does not affect any comm
rights we have over the Vehicle. We m
until everything you owe us in respect of
Parking fees will continue to accrue dur
Vehicle until we recover all fees and cos
Vehicle after 30 days, you agree that we
proceeds to pay the amounts you owe u
required by us to permit us to do so.
5. We reserve the right for us and our cont
Vehicle and to move it if we decide reas
emergency or if we reasonably consider
operation of this Car Park. We may cha
moving the Vehicle if the need to move i
Terms or have caused obstruction or du
for non-payment.
6. You must pay for any damage caused to
Park including, but not limited to, any da
substances which leak from the Vehicle.
7. You agree to indemnify us for claim mad
related to your use of this car park, any
Contractual Terms and Conditions.
8. You are liable and shall indemnify us for
the vehicle to the Car Park including, but
by oil or other substances which leaks fr
9. These Contractual Terms and Conditions
without our prior written approval from the
Corporate Services Pty Ltd Trading as N
10. If any part of these conditions is void, voi
the offering part shall be severed, and it
and effect.
11. In these conditions:
 - (a) "we", "us" and "our" means Natiowid
Trading as Nationwide Parking ABN 52 1
employees, servants, agents and assigne
 - (b) "your vehicle" includes a vehicle drive
into this car park.

PARKi

OFF STREET PARKING MANAGEMENT



LPR ENTRY FOR PERMANENTS, PERMIT HOLDERS AND RESERVATION CUSTOMERS



PARKI APP ACCESS WITH HANDS FREE BLUETOOTH ID TECHNOLOGY

