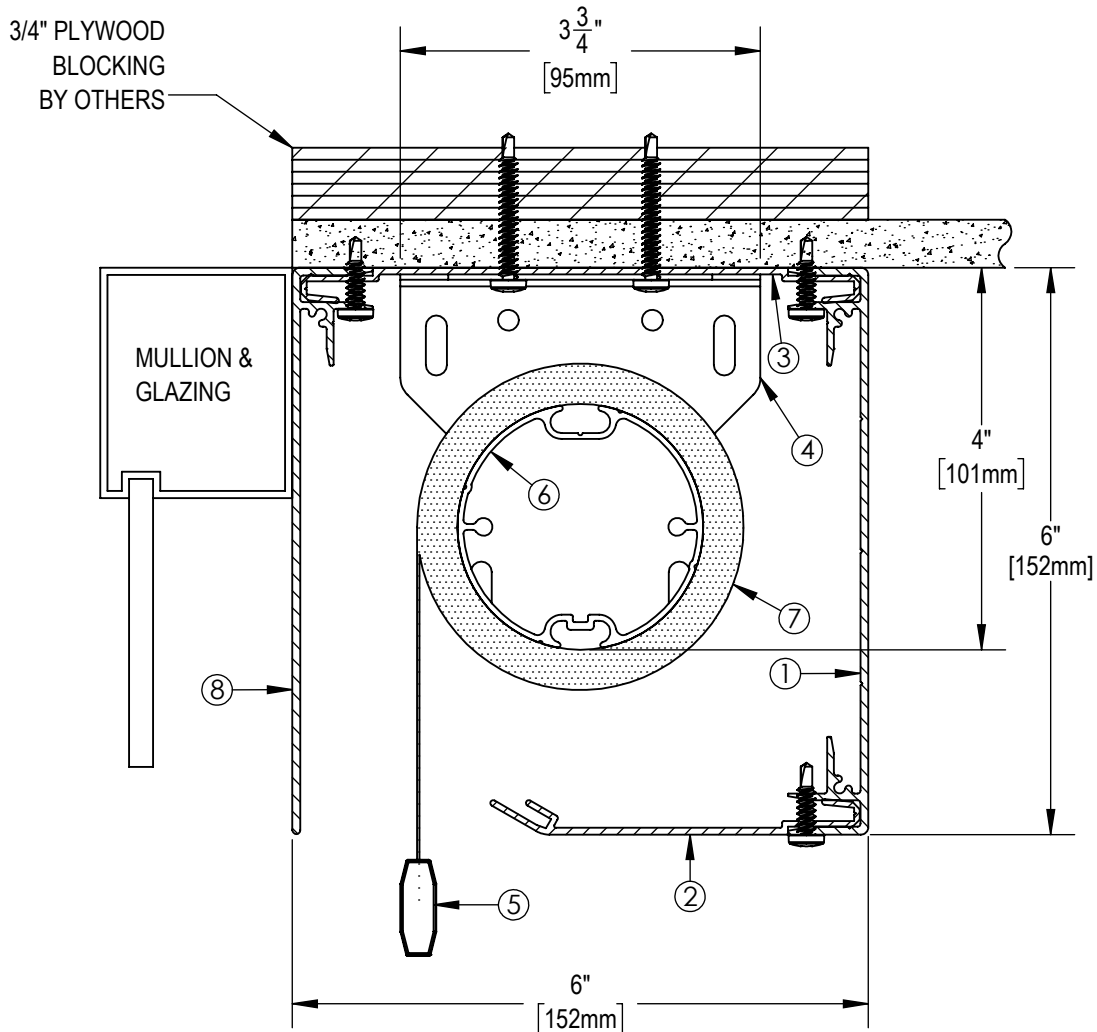


**** NOTE ****

JUNCTION BOX TO BE LOCATED WITHIN
3 FT OF MOTOR LOCATION. MOTOR
LOCATION TO BE DETERMINED WITH
SOLARFECTIVE REPRESENTATIVE.



NOTES:

1. EXTRUDED ALUMINUM 6" FASCIA
2. 4" EXTRUDED ALUMINUM CLOSURE
3. MOUNTING ANGLE
4. END BRACKET
5. EXTRUDED ALUMINUM EXTERIOR HEMBAR
6. 2 1/2" OR 3 1/2" ϕ EXTRUDED ALUMINUM TUBE
7. FABRIC: 1%, 3%, 5%, 10% OPENNESS OR BLACKOUT
8. EXTRUDED ALUMINUM 6" BACK FASCIA



Solarfective

EXCLUSIVELY BY ELITE PRO

eliteproshading.com | solarfective@eliteproshading.com

**ES SHADE 6 WITH CEILING MOUNT
FRONT AND BACK FASCIA**

DATE:

APR 1, 2019

SCALE:

1:2

DOCUMENT NUMBER:

SF-ES9

REVISION:

-