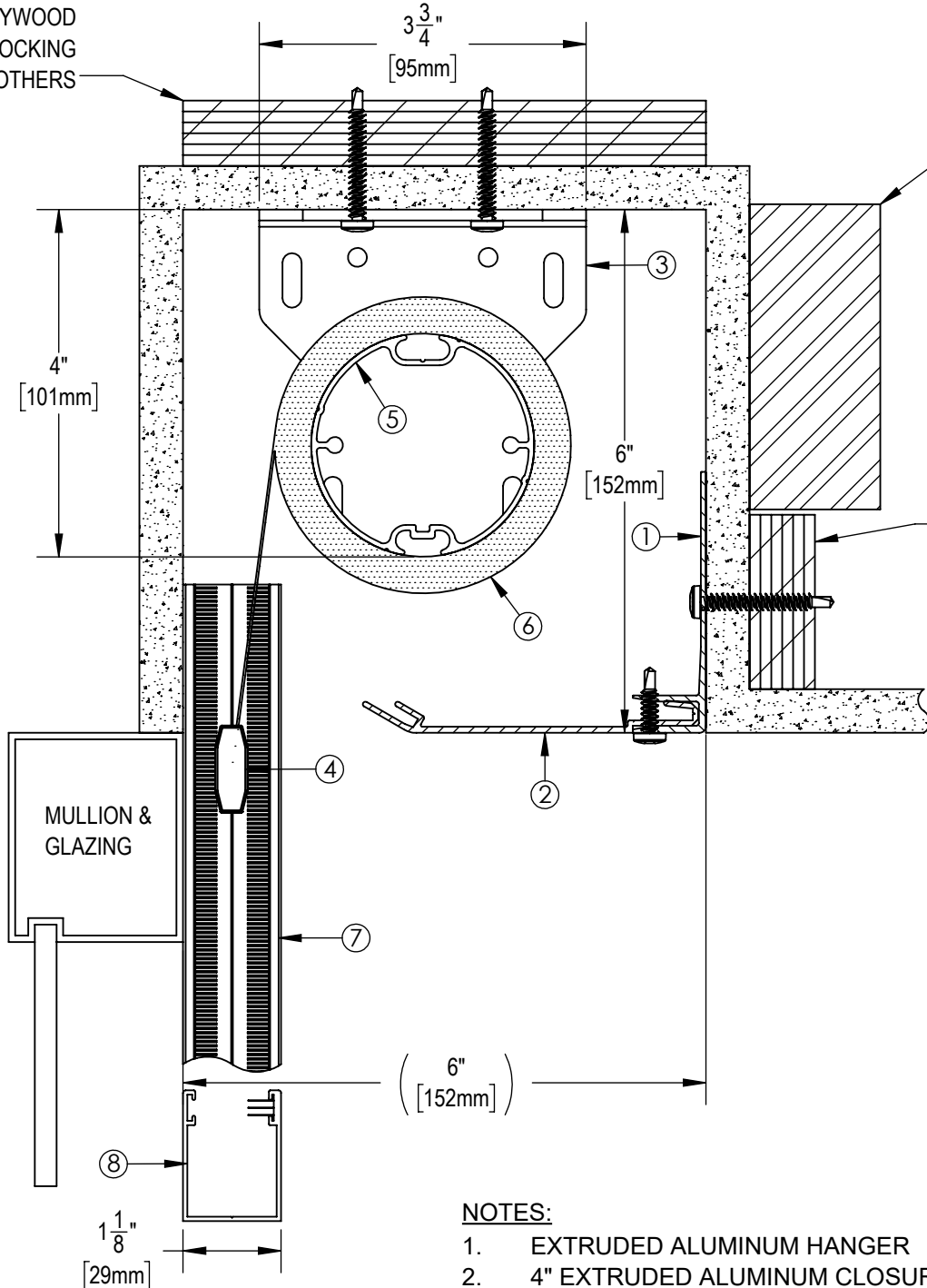


3/4" PLYWOOD
BLOCKING
BY OTHERS

DRYWALL POCKET
(BY OTHERS)

JUNCTION BOX TO
BE LOCATED WITHIN
3 FT OF MOTOR
LOCATION.

3/4" PLYWOOD
BLOCKING
BY OTHERS



NOTES:

1. EXTRUDED ALUMINUM HANGER
2. 4" EXTRUDED ALUMINUM CLOSURE
3. END BRACKET
4. EXTRUDED ALUMINUM EXTERIOR HEMBAR
5. 2 1/2" OR 3 1/2" ϕ EXTRUDED ALUMINUM TUBE
6. FABRIC: 1%, 3%, 5%, 10% OPENNESS OR BLACKOUT
7. MOTORIZED BLACKOUT SIDE CHANNEL
8. MANUAL BLACKOUT BOTTOM CHANNEL

**** NOTE ****

JUNCTION BOX TO BE LOCATED WITHIN
3 FT OF MOTOR LOCATION. MOTOR
LOCATION TO BE DETERMINED WITH
SOLARFECTIVE REPRESENTATIVE.



Solarfective

EXCLUSIVELY BY ELITE PRO

eliteproshading.com | solarfective@eliteproshading.com

**ES SHADE 6 IN POCKET
SIDE AND BOTTOM CHANNELS**

DATE:

APR 1, 2019

SCALE:

1:2

DOCUMENT NUMBER:

SF-RD8

REVISION:

-