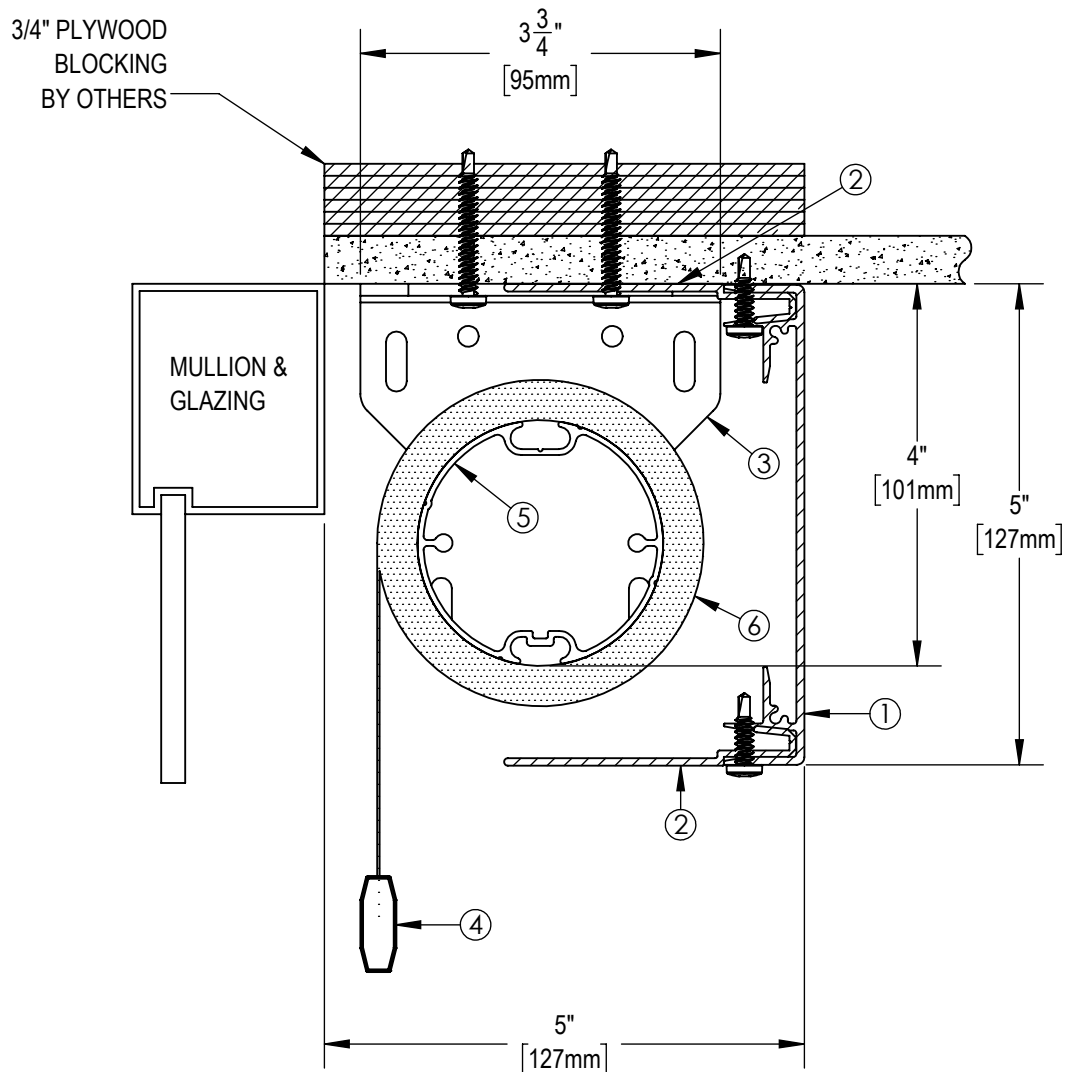


**\*\* NOTE \*\***

JUNCTION BOX TO BE LOCATED WITHIN  
3 FT OF MOTOR LOCATION. MOTOR  
LOCATION TO BE DETERMINED WITH  
SOLARFECTIVE REPRESENTATIVE.



**NOTES:**

1. EXTRUDED ALUMINUM 5" FASCIA
2. 2-5/8" EXTRUDED ALUMINUM ENCLOSURE
3. END BRACKET
4. EXTRUDED ALUMINUM EXTERIOR HEMBAR
5. 2 1/2"  $\varnothing$  EXTRUDED ALUMINUM TUBE
6. FABRIC: 1%, 3%, 5%, 10% OPENNESS OR BLACKOUT



**Solarfective**

EXCLUSIVELY BY ELITE PRO

eliteproshading.com | solarfective@eliteproshading.com

**ES SHADE 5 WITH CEILING MOUNT FASCIA**

DATE:

APR 1, 2019

SCALE:

1:2

DOCUMENT NUMBER:

SF-ES12

REVISION:

-