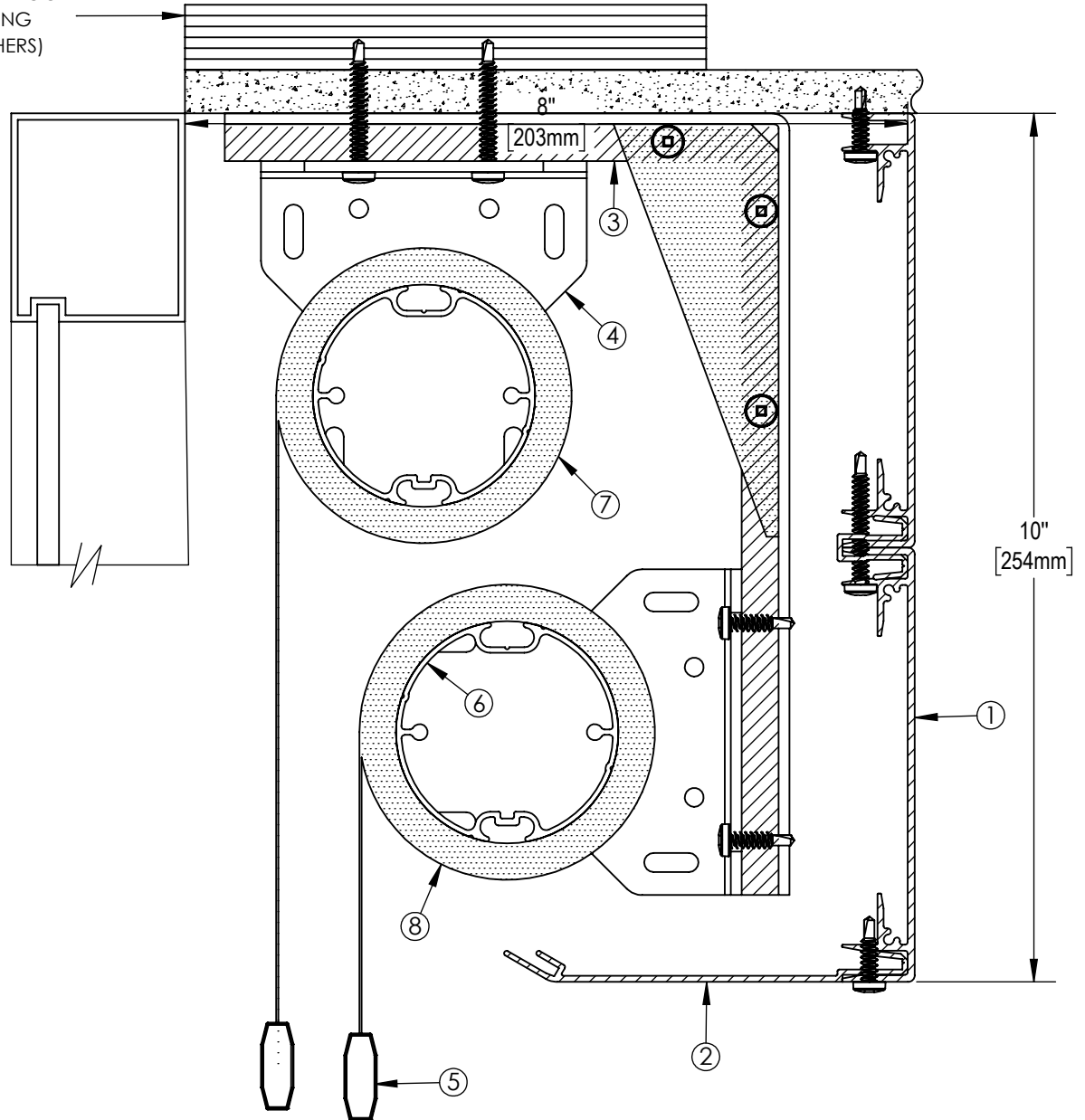


3/4" PLYWOOD  
BLOCKING  
(BY OTHERS)



**NOTES:**

1. EXTRUDED ALUMINUM 10" FASCIA
2. 5" EXTRUDED ALUMINUM CLOSURE
3. ALUMINUM RACEWAY
4. END BRACKET
5. EXTRUDED ALUMINUM EXTERIOR HEMBAR
6. 2 1/2" Ø EXTRUDED ALUMINUM TUBE
7. FABRIC: 1%, 3%, 5%, 10% OPENNESS OR BLACKOUT
8. FABRIC: 1%, 3%, 5%, 10% OPENNESS OR BLACKOUT

**\*\* NOTE \*\***

JUNCTION BOX TO BE LOCATED WITHIN 3 FT OF MOTOR LOCATION. MOTOR LOCATION TO BE DETERMINED WITH SOLARFECTIVE REPRESENTATIVE.



**Solarfective**

EXCLUSIVELY BY ELITE PRO

eliteproshading.com | solarfective@eliteproshading.com

## ES SHADE 5 DUAL SYSTEM WITH FASCIA AND RACEWAY

DATE:

APR 1, 2019

SCALE:

1:2

DOCUMENT NUMBER:

SF-ES15

REVISION:

-