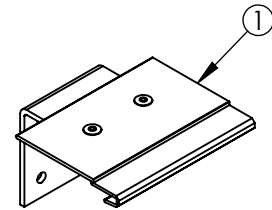
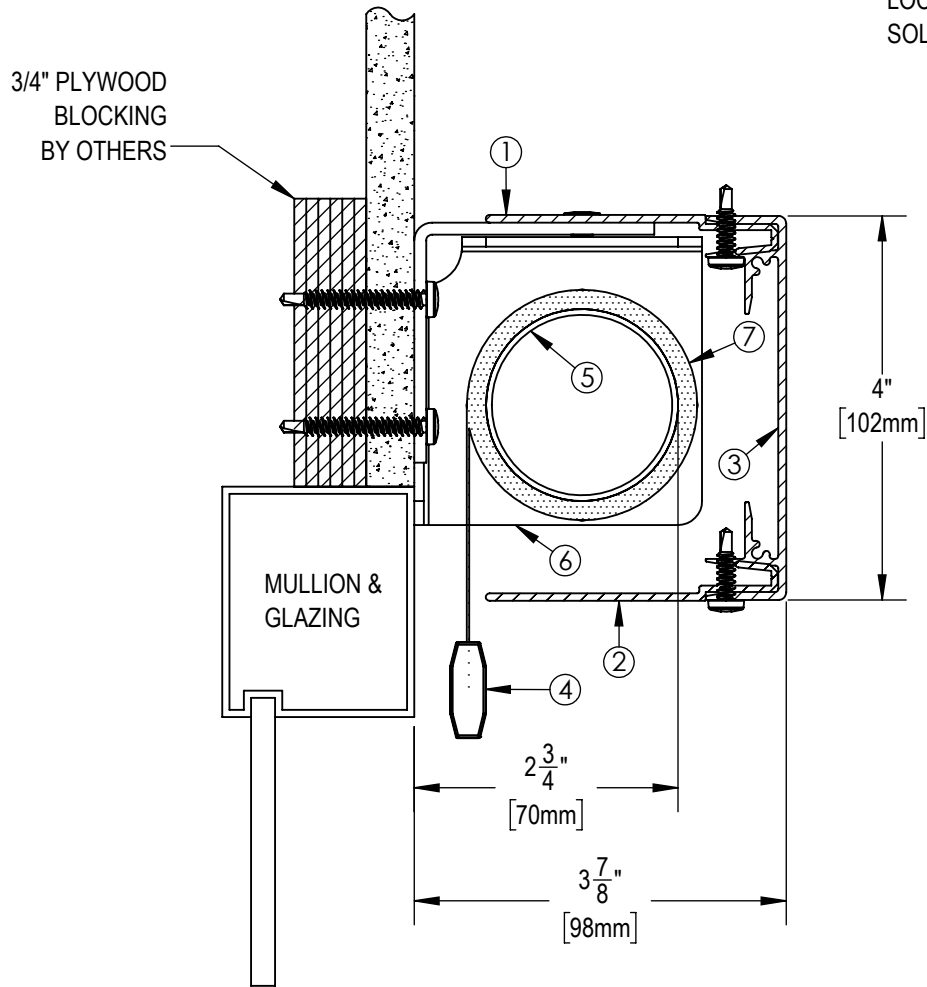


**** NOTE ****

JUNCTION BOX TO BE LOCATED WITHIN
3 FT OF MOTOR LOCATION. MOTOR
LOCATION TO BE DETERMINED WITH
SOLARFECTIVE REPRESENTATIVE.



ISO VIEW OF MOUNTING ANGLE
ONE AT EACH END.

NOTES:

1. MOUNTING ANGLE
2. 2-5/8" EXTRUDED ALUMINUM CLOSURE
3. EXTRUDED ALUMINUM 4" FASCIA
4. EXTRUDED ALUMINUM EXTERIOR HEMBAR
5. 2" ϕ EXTRUDED ALUMINUM TUBE
6. END BRACKET
7. FABRIC: 1%, 3%, 5%, 10% OPENNESS OR BLACKOUT



Solarfective

EXCLUSIVELY BY ELITE PRO

eliteproshading.com | solarfective@eliteproshading.com

ES SHADE 4 WITH FACE MOUNT FASCIA

DATE:

APR 1, 2019

SCALE:

1:2

DOCUMENT NUMBER:

SF-ES10

REVISION:

-