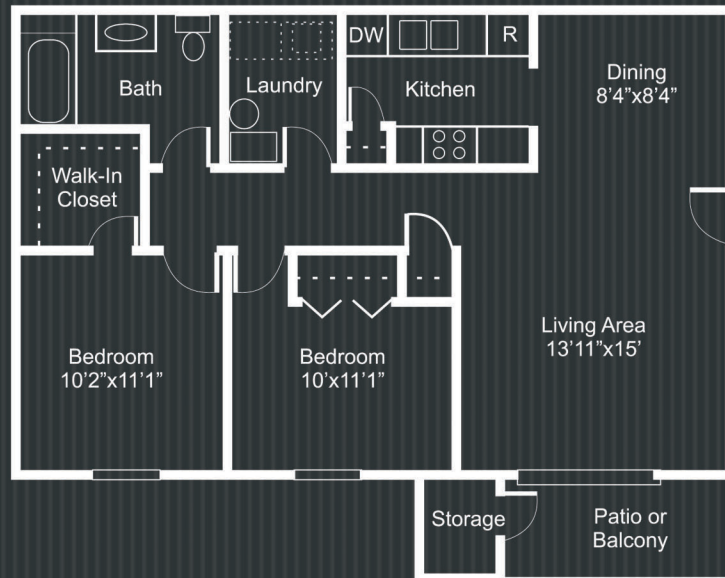
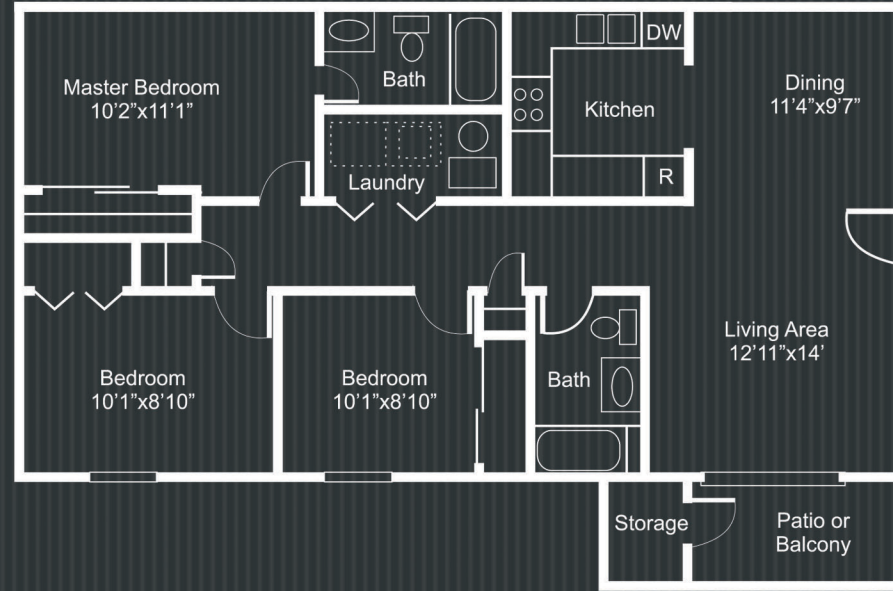
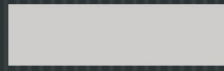


HOME PLANS AVAILABLE AT REFLECTIONS:

The Mystic

3 Bed/2 Bath
1008 Square Feet

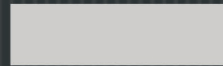
MONTHLY RENT:



The Shore

2 Bed/1 Bath
821 Square Feet

MONTHLY RENT:



Reflections

APARTMENT HOMES



I·G·C
RESIDENTIAL PROPERTY MANAGEMENT
In Good Company

REAL HOSPITALITY

IGCRE.com



Take a look at the exceptional **comforts and conveniences** featured in your apartment home:

Newly Upgraded, Oversized and Bright
2 and 3 Bedroom Apartment Homes

Full-Size Washer and Dryer Hookup
in Every Home

9 Minutes to I-80/90 Toll Road

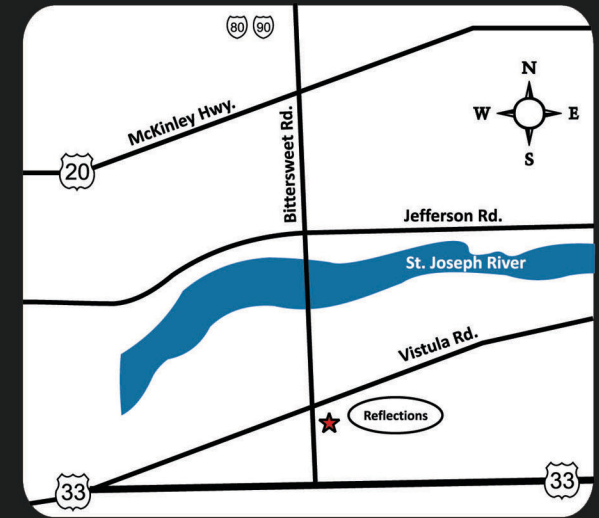
7 Miles to University Park Mall
and Grape Road

First Class Customer Service, Meticulously
Landscaped Grounds, and
Around-the-Clock Maintenance

REAL PEOPLE, REAL QUALITY, REAL CARING,
REAL HOSPITALITY



Reflections Apartment Homes
411 Rosewood Drive
Mishawaka, IN 46544
Tel: 574-257-0024 Fax: 574-257-0045
email: reflections@igcre.com



This beautiful community is only minutes from McKinley Highway and Toll Rd 80/90. Featuring a large fountain, a playground area, plentiful parking, and expansive green space. Light-filled and spacious, REFLECTIONS offers everything you need to enjoy a convenient and peaceful residential experience.