



# HOLY FAMILY PARISH

**WITH THE LORD THERE IS MERCY AND  
FULLNESS OF REDEMPTION.**

FIFTH SUNDAY OF LENT

SUNDAY, MARCH 22<sup>ND</sup>

VISIT OUR WEBSITE AT [HOLYFAMILYLAPORTE.ORG](http://HOLYFAMILYLAPORTE.ORG)

# OCIA



## What are the Scrutinies?



Our Catechumens, now "The Elect," with sponsors at the rite of Election

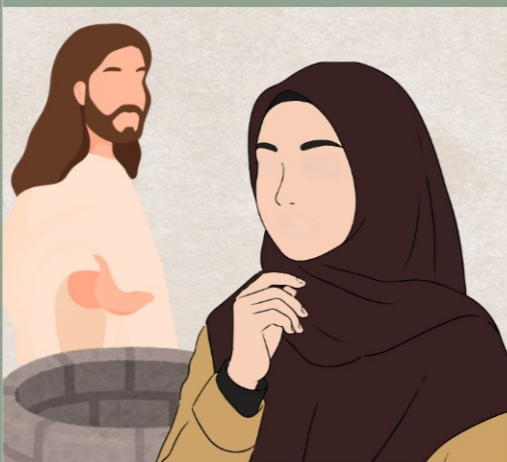
## What happens?

- The Elect come forward and **pray for repentance** in silence.
- The Faithful **pray for the elect** in the intercessions/universal prayer.
- The Priest prays a **prayer of exorcism** over the people. Then he **lays hands** on each of the Elect.
- The Elect are then **dismissed** to go and reflect on the Gospel.

After the Rite of Election with the Bishop, all catechumens are brought forth at the **last three weekends before Palm Sunday** to gather with the community to give themselves to spiritual recollection as they prepare for the Paschal feasts and their eventual entry into the Catholic Church.

By the OCIA, this is known as the **Period of Purification and Enlightenment**. The Scrutinies are a rite of spiritual purification of the minds and hearts of the Elect. That they may be free from Satan, resist temptations, and be strengthened by Christ, the way, the truth, and the life. The Readings for each Scrutiny reflect this.

The readings for the Scrutinies are always from **Year A** for the 3<sup>rd</sup> (The woman at the Well), 4<sup>th</sup> (Healing the man born blind), and 5<sup>th</sup> (Raising Lazarus) Sundays of Lent.



# A Community that Worships Together

adoración en comunidad

## MASS SCHEDULE & INTENTIONS

Homilies are available on our YouTube channel.  
[www.youtube.com/c/HolyFamilyLaporte](http://www.youtube.com/c/HolyFamilyLaporte)

### Daily Mass

#### Monday, March 23rd

- 8:00 a.m. Mass at Sacred Heart  
+ Walter Regeski by Phyllis

#### Tuesday, March 24th

- 8:00 a.m. Mass at Sacred Heart  
+ Edna Boehnlein by Audrey Hagenow

#### Wednesday, March 25th

- 8:00 a.m. Mass at Sacred Heart  
+ Sister Nadia Gavanski by parishioner
- 7:00 p.m. Mass at St. Joseph (Spanish)  
+ Manuel Alvarez by Maria H Alvarez

#### Thursday, March 26th

- 8:00 a.m. Mass at Sacred Heart  
+ Rick Hensell by Tom & Karen Burns

#### Friday, March 27th

- 8:00 a.m. Mass at Sacred Heart  
+ Marty Albright by her sister, Maggie Kubit

#### Saturday, March 28th

- 8:30 a.m. Mass at St Joseph  
+ Rosalie Talerico by Tom & Joan Cashbaugh

## Fifth Sunday of Lent

### Saturday, March 28th, Vigil Mass

- 4:30 p.m. Vigil Mass at St. Peter  
+ Linda Swanson by St. Vincent dePaul

### Sunday, March 29th

**At the Procession with Palms—Gospel Matthew 21:1-11**

**Reading 1 Isaiah 50:4-7**

**Reading 2 Philippians 2:6-11**

**Gospel Matthew 26:14—27:66**

- 7:30 a.m. Mass at St. Peter  
+ Rose H. Napierala by Mike & Marie Gosemeyer
- 9:00 a.m. Mass at St. Joseph  
+ Judy Cichon by Sally & Dennis Biege  
& Holy Family Parishioners
- 10:30 a.m. Mass at Sacred Heart  
+ Paul Kulasa by Family
- 12:00 p.m. Mass at St. Joseph  
+ Able Guzman Jacobo y Filiberto Jacobo by familia Guzman

### CONFESSION & ADORATION SCHEDULE

#### Confession | *Confesión*

- Tuesday, 7:15 a.m. Sacred Heart (before 8 a.m. Mass)
- Wednesday, 6:15 p.m. St. Joseph (before 7 p.m. Mass)
- Thursday, 7:15 a.m. Sacred Heart (before 8 a.m. Mass)
- Saturday, 9:00 a.m. St. Joseph
- Saturday, 3:00-4:00 p.m. St. Peter

#### Eucharist Adoration | *Adoración*

- Monday - Friday, 7 a.m. Before 8 a.m. Mass,  
Sacred Heart (Livestream)
- St. Joseph Adoration Chapel, 8 am-5 pm

## In Memoriam

Please pray for the repose of the soul of:

**Loreto Boholst**  
**Enrique Dominguez**

*Por favor, recen por el descanso de su alma.*

## VOLUNTEER Easter Vigil



Easter Vigil is Saturday, April 4th and we will be celebrating our largest OCIA class with a reception after Mass.

We need volunteers to provide appetizers and/or home-made baked goods. If you are able to help, please contact the office at 219-362-2815 or Lynn Johnson at 574-876-7833. There will be several drop off times available. Thank you for helping make this a memorable event.

## Fortify Night

FELLOWSHIP + FOOD + MUSIC + DISCUSSION

JOIN FR. NATE AND FR. ALEX  
EACH MONTH REGARDING A DIFFERENT  
TOPIC ABOUT OUR FAITH

**ST. PETER MINISTRY RESOURCE CENTER**  
**6:00 PM - 8:00 PM**

SESSION 3:

**Monday,**  
**March 23rd**

168

## KYRIE

Ký-ri - e e - lé - i - son. Ký-ri - e e - lé - i - son.  
Lo - rd, have mer - cy. Lo - rd, have mer - cy.

Chri - ste e - lé - i - son. Chri - ste e - lé - i - son.  
Chri - st, have mer - cy. Chri - st, have mer - cy.

Ký-ri - e e - lé - i - son. Ký-ri - e e - lé - i - son.  
Lo - rd, have mer - cy. Lo - rd, have mer - cy. CHANT MASS

171

## POST CONSECRATIONEM

*Priest* *or*

My - sté - ri - um fí - de - i. M  
The My - ste - ry of Faith.

*All*

Mor - tem tu - am an - nun - ti - á - mus, Dó - mi - ne, et tu - am  
Yo - ur de - ath we pro - claim O Lo - rd, and yo - ur  
re - sur - re - cti - ó - nem con - fi - té - mur, do - nec vé - ni - as.  
re - sur - re - cti - on we pro - fe - ss, un - til you come a - gain.

170

## SANCTUS

San - ctus, San - ctus, San - ctus Dó - mi - nus De - us Sá -  
Ho - ly, Ho - ly, Ho - ly, Lord God  
ba - oth. Ple - ni sunt coe - li et ter - ra gló - ri - a tu - a.  
of Hosts. He - a - ven an - d Ea - rth are full of your glo - ry.  
Ho - sán - na in ex - cél - sis. Be - ne - dí - ctus qui ve - nit in  
Ho - san - na in the high - est. Bles - sed is he who co - mes in  
nó - mi - ne Dó - mi - ni. Ho - sán - na in ex - cél - sis.  
the na - me of the Lord. Ho - san - na in the high - est.

174

## AGNUS DEI

A - gnus De - i, qui tol - lis pec - cá - ta mun - di: mi - se -  
Lamb of God, you take away the sins of the world: ha - ve  
ré - re no - bis. A - gnus De - i, qui tol - lis pec - cá - ta  
mer - cy on us. Lamb of God, you take away the sins of  
mun - di: mi - se - ré - re no - bis. A - gnus De - i,  
the world: ha - ve mer - cy on us. Lamb of God,  
qui tol - lis pec - cá - ta mun - di: do - na no - bis pa - cem.  
you take away the sins of the world: gr - ant us pe - ace.

Text and music: Chant Mass; Graduale Romanum, 1974.

## Communion Hymn

## HERE I AM

Tom Booth

*Refrain*

Here I am, stand - ing right be - side you. Here I am;  
do not be a - fraid. Here I am, wait - ing like a lov - er.

*1-3 to Vss. Final*

I am here; here I am. am. I am here; here I am.

*Verse 1*

1. Do not fear when the tempt - er calls you. Do not  
1. fear e - ven though you fall. Do not fear, I have con - quered  
to Refrain

1. e - vil. Do not fear, nev - er be a - fraid.

*Verse 2*

2. I am here in the face of ev - 'ry child.  
2. I am here in ev - 'ry warm em - brace. I am here with  
to Refrain

2. ten - der - ness and mer - cy. Here I am, I am here.

*Verse 3*

3. I am here in the midst of ev - 'ry tri - al. I am  
3. here in the face of de - spair. I am here when  
to Refrain

3. par - don - ing your broth - er. Here I am, I am here.

© 1996, Tom Booth. Published by spiritandsong.com®, a division of OCP. All rights reserved.

## Ave Regina Caelorum

English adaptation  
M. G. SonnekGregorian chant  
Simple tone

A - ve, Re - gi - na cae - ló - rum, A - ve, Dó - mi - na An - ge - ló - rum:  
Hail, Queen of Hea - ven, ce - les - tial, Hail, O La - dy of the an - gels:

Sál - ve rá - dix sál - ve pór - ta, Ex qua mún - do lux est ór - ta:  
Thou the root, and thou the por - tal, Of whom born was Light im - mor - tal:

Gáu - de Vir - go glo - ri - ó - sa, Su - per óm - nes spe - ci - ó - sa.  
Glo - rious Vir - gin, joy un - to thee, Fair - est mai - den to whom we flee.

Vá - le, O vál - de de - có - ra, Et pro nó - bis Chri - stum ex - ó - ra.  
Fare thee well beau - ti - ful mo - ther, In - ter - cede for us, to Christ our sav - ior.

**LITERAL TRANSLATION:**

Hail, Queen of heaven, hail Lady of the angels.  
Hail root and gate from which the Light of the world was born.  
Rejoice glorious Virgin, fairest of all.  
Fare thee well, most beautiful, and pray for us to Christ.



# WAYS TO GIVE

HELP US TO MEET OUR CSA GOAL IN THE FOLLOWING WAYS:

## CASH

Cash is one of the easiest ways to make a charitable contribution. A cash contribution can be a check, money order or cashier's check.

## SECURITIES

A gift of securities may be given so that the donor receives a tax deduction equal to the fair market value of the donated assets while avoiding capital gains tax on the donated assets. Holy Family Parish will work with you to facilitate the donation of both marketable and closely held securities.

## LIFE INSURANCE

Life insurance is an easy way to make a significant contribution. You may give a policy that is no longer needed, take out a new policy, or name the Holy Family Parish as a beneficiary of an existing policy. Direct the proceeds, cash value of policy, or any portion of it to benefit your parish.

## BEQUEST

By instructing a bequest in your will, you can specify an amount or percentage from your estate naming Holy Family Parish as a permanent beneficiary.

## IRA CHARITABLE DISTRIBUTION

Using a Qualified Charitable Distribution (QCD) is a tax-savvy strategy that allows you to transfer up to \$100,000 per year from your IRA directly to a qualified organization, such as Holy Family Parish. It is only available to IRAs and individuals who have reached a Required Minimum Distribution (RMD) age, currently 73 years old. Any amount processed as a QCD counts toward your RMD requirement and reduces the taxable amount of your IRA distribution. This lowers both your adjusted gross income and taxable income, resulting in a lower overall tax liability.

## MEMORIAL GIFTS

Making a donation in memory of someone special reflects your desire to make a lasting impact on the lives of others, just as your honoree has done. You may also include the desire for memorial gifts to be made in your name as part of your final plans. You may choose to designate memorial gifts for a particular purpose of your choice at Holy Family.

## RETIREMENT ACCOUNTS

Holy Family Parish may be designated as the beneficiary under a donor's qualified retirement plan benefits, including IRAs, 401(k)s, 403(b)s, and Keogh (HR-10) plans. Retirement benefits may be the most tax-efficient way to make a gift to the parish.



## WAYS TO GIVE

Your Catholic faith is central to your life. You care deeply about the work of the Church within the Diocese of Gary. Pair your faith with your passion through a gift that will last forever. There are many ways to create a legacy of faith through Holy Family Parish. To find out more about helping with a gift today, or establishing a donation as part of your estate, please contact Madalyn Jozaitis at 219-362-2815 or [mjozaitis@holyfamilylaporte.org](mailto:mjozaitis@holyfamilylaporte.org).

# LENTEN CONFESSIONS

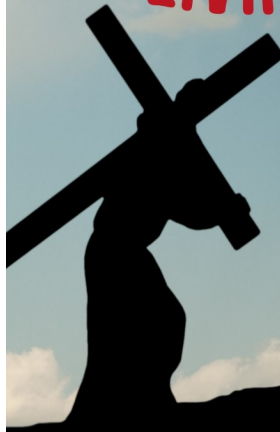
Wednesday, March 25th



*Confession heals, confession justifies,  
confession grants pardon of sin*

1:00 PM - 2:00 PM at Sacred Heart Church  
6:00 PM at St. Joseph Church

# HIGH SCHOOL Youth Group LIVING STATIONS



**PERFORMANCE**  
SUN., MARCH 29TH  
@7:30 PM  
ST. PETER'S CHURCH

For more information contact:  
Jennifer Graf: (630) 659-4101  
trillium92016@yahoo

# Holy Thursday

THURSDAY, APRIL 2<sup>ND</sup>  
7:00 PM MASS  
SACRED HEART CHURCH

AS I HAVE DONE FOR YOU,  
YOU SHOULD ALSO DO

# Good Friday



Friday, April 3rd

2:00 pm Service (English)  
St. Peter Church (Divine Mercy After)

4:00 pm Service (Spanish)  
St. Joseph Church (Via Crucis Begins After)

# Holy Saturday

Saturday, April 4<sup>th</sup>  
Sábado Santo

St. Peter Church  
8:00 PM  
Celebration After  
*Celebración posterior*

# Easter Sunday

*He Has Risen*

Sunday, April 5<sup>th</sup>  
Regular Mass Schedule  
*Horario habitual de misas*

**GOOD  
FRIDAY**  
VIERNES SANTO

**EASTER  
MONDAY**  
LUNES DE PASCUA

FRIDAY  
APRIL 3<sup>RD</sup>

MONDAY  
APRIL 6<sup>TH</sup>

**PARISH OFFICE CLOSED**  
OFICINA PARROQUIAL CERRADA





*Ladies!*  
Join us in March  
for Kingdom Builders

Of all the men across all of time, God chose Joseph of Nazareth to be the earthly father of Jesus. God invites us to claim Joseph as our spiritual father as well. Join us in March to discover the loving embrace of our spiritual father and protector ~ St. Joseph, Terror of Demons. Beloved Daughters of the King . . . together, let us go to Joseph.

Tuesday, March 24, 2026, 7p-8:30p  
Holy Family Parish, Sacred Heart Activity Center, LaPorte, IN  
Presentation, Adoration, & Benediction

 Kingdom Builders  
[www.BuildingThroughHim.com](http://www.BuildingThroughHim.com)




**Divine Mercy Sunday**  
*Domíngo de la Divina Misericordia*  
Sunday, April 12<sup>th</sup>  
3:00 PM  
St. Joseph Church

DISCIPLESHIP *discipulado* | OUTREACH *alcance* | VOCATIONS *vocaciones*



CATHOLIC SERVICES APPEAL  
*Partners in Christ's Mission*

**Our Goal:**  
**\$115,168.49**



**Let's surpass our goal!**  
Scan to give, use a donation card or visit [give.dcgary.org](http://give.dcgary.org) |  
*Escanear para dar, usar una tarjeta de donación o visitar [give.dcgary.org](http://give.dcgary.org)*



**PANCAKE BREAKFAST**

*Desayuno con tortitas*  
Sunday, April 26th  
St. Peter Campus  
8 AM- 11 AM



*Please come join us!*

**SPONSORED BY:**  
MEN GROWING IN DISCIPLESHIP & KINGDOM BUILDERS




HIGH SCHOOL

# Youth Group

ADORATION & PRAYER

SNACKS & SOCIALIZATION

SMALL GROUPS

1ST & 3RD SUNDAYS OF THE MONTH

6:30 - 8:30 PM

ST. PETER'S MINISTRY CENTER

QUESTIONS? - TEXT: (219) 380-6303



## 2026 HOLY NAME SOCIETY SCHOLARSHIP



Graduating Seniors are invited to fill out the application at the link to apply for the Holy Name Society Scholarship. The application will be sent to our scholarship committee for review. Application deadline is May 3, 2026. Pass this information on to those who qualify. **Note: Parents must be parishioners of Holy Family Parish for students to qualify for a scholarship.**

APPLY HERE:



*Se invita a los estudiantes que se graduarán a rellenar la aplicación en el link para aplicar para la beca de la Sagrada Familia. La aplicación será enviada a nuestro comité de becas para su revisión. La fecha de entrega de la aplicación es el 3 de mayo de 2026. Pase esta información a aquellos que califiquen. Nota: Los padres deben ser feligreses de la Parroquia de la Sagrada Familia para que los estudiantes califiquen para la beca.*

Donate to the Fund:



Do you want to support the Holy Name Society Scholarship? For parishioners who receive contribution envelopes, be sure to use the Holy Name envelope provided.

\*AGES 18+

# YOUNG ADULT GROUP

6:30 PM - 8:30 PM

St. Peter's Ministry Center  
1110 Michigan Ave.  
LaPorte, IN 46350

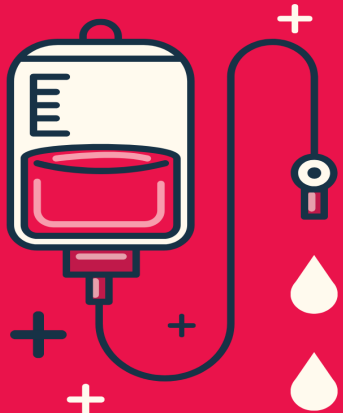
MEETINGS EVERY 1ST & 3RD THURSDAYS OF THE MONTH

\*Must be out of high school



For more information, contact: John Paul Wellinski - (219) 851-7639  
Drew Noveroske - (219) 380-4552

# + DONATE + + BLOOD +



Wednesday

April 22nd  
12-5pm

Save someone's life with a drop of your blood!

Campaña de donación de sangre 3 de Decembre

Done sangre para salvar la vida de alguien

@ SACRED HEART CAMPUS → GO TO: [redcross.org/give-blood](https://redcross.org/give-blood)

# This Week at Holy Family Parish

## Meetings and Small Groups

### Bible Study—Every Wednesday

Explore the Word of God with your friends on Wednesday mornings - immediately after the 8am Mass at Sacred Heart. If you have ever thought of joining a Bible Study, now is a good time to begin.

### Scripture Discussion—Every Wednesday—Explore next Sunday's

Readings before you hear them at Mass. Participants marvel at how well the Old Testament and New Testament Readings correlate. Join us on Wednesday evenings (6:30-8:00pm) at St. Peter Ministry Center, Mother Theresa Room.

### Fit Shepherds Every Saturday, 6:30am - 7:30am,

Boston Middle School Track, by the corner of 1st and C street. Fit Shepherds aims to help every man in our community be in the best physical and spiritual shape of his life. Meetings every Saturday morning at 6:30am at the Boston Middle School outdoor track. All men 16 and older are welcome.

**Fiat Fitness** Every Saturday -Women's exercise group that meets each week for prayer, movement, and fellowship. Women at all levels of fitness are welcome. Every Saturday, 7:15am - 8:15am, St. Peter Ministry Resource Center. Contact: Jan Edquist, 219-575-1597.

# Food Pantry Update

## Sacred Heart Food Pantry

(130 Bach St) Open every Tuesday, 1-2pm. They collect and distribute non-perishable food items and personal care items for LaPorte residents needing assistance.

**February** Food Expenses: \$2,521.49 Personal Care: \$138.50

Households assisted: 104 Individuals assisted: 286

Thank you to all who are contributing to our 40 Cans of Lent food drive. Your response has been terrific.

## St. Vincent DePaul (101 C St):

St. Vincent DePaul Food Pantry is open every Monday from 3:00-5:00 pm. Clothing and small household items Annex is open every Mon. from 3:00-5:00pm and every Wed. from 11am-2pm. We will also open by appointment (call 219-369-3347) to offer assistance or to receive donations.

February	Families	People
Clothing & Household Items	181	480
Food	114	299
Gasoline	1	3
Total People Assisted	296	782

**EVANGELIZING REALITY:  
SCIENCE & THE CULTURE OF LIFE**

*Learn how FEMM is influencing modern medicine and the latest in reproductive endocrinology*

# Knights of Columbus 412 Lincolnway, LaPorte Invites all to Indiana's Greatest Lenten Fish Fry

4:30-7pm continuing March 27

# Children's Ministry

1st & 3rd Sunday of the month at Sacred Heart

## Ministerio infantil

El primer y tercer domingo del mes en Sacred Heart.

**Wednesday,  
April 15, 2026 | 6 p.m.**

at **Journeyman Distillery**  
258 S Campbell  
Valparaiso, IN 46385

**Presented by:**  
Sr. Emmanuel Kurtzweg, RN and FEMM





**Cost \$10**  
includes Hors d' Oeuvres  
Cash bar available

**For more info, contact:**  
Sister.Emmanuel@  
franciscanalliance.org

**Learn more and RSVP:** → 

dcgary.org/  
evangelizing-reality

## Support CRS Rice Bowl



Starting next Sunday, parishioners are asked to bring back their Lenten Rice Bowls and place them in the Collection Container near the sanctuary. After Easter, the monies will be counted and distributed to Catholic Relief Services and our Diocesan needs. Thank you for your participation in this annual program.

## Stewardship of Sacrificial Giving

donación sacrificada

Date:	3/15/26
Regular Collection	\$24,658.40
Building & Maintenance	\$398.00
Easter	\$25.00
Easter Flowers	\$260.00
Catholic Relief	\$3,147.00

**Mass Check-ins**


Cards are located in the main entrance narthex (one per student).  
Place in collection basket when done!  
ALL Faith Formation students are expected to participate in Mass Check-ins.



**tarjetas de asistencia a misa**

Las tarjetas están disponibles en la entrada (una para cada estudiante).  
Pónganlas en la canasta durante el coleccion.  
Se requiere que TODOS los estudiantes participen.

## Support Holy Family Parish



Do you want to support Holy Family Parish and our Mission to form disciples who serve? Use the QR code to make a contribution. | *Utilice el código QR para hacer una contribución.*

# Holy Family Parish Team

*Equipo parroquial de la Sagrada Familia*



**Pastor** | *pastor*  
Rev. Nate Edquist

**Associate Pastor** | *Asociado pastor*  
Rev. Alex Kouris

**Deacons:**  
Bob Wellinski  
bwellinski@holyfamilylaporte.org  
Frank Zolvinski  
fzolvinski@holyfamilylaporte.org

**Music & Liturgy** |  
*música y liturgia*  
Patrick Watterson  
pwatterson@holyfamilylaporte.org

**Director of Mission Engagement** |  
*Director de Compromiso con la Misión*  
Lynn Johnson  
ljohnson@holyfamilylaporte.org

**Financial Manager** |  
*director financiero*  
finance@holyfamilylaporte.org

**Director of Parish Operations & Director of Faith Formation**  
*Director de operaciones parroquiales y Directora de catecismo*  
219-362-2815  
Madalyn Jozaitis  
mjozaitis@holyfamilylaporte.org

**Faith Formation & Office Assistant**  
*Asistente de catecismo y Oficina*  
Saraidee Reyes-Villa

**OCIA** ocia@holyfamilylaporte.org

**Director of Safety & Security**  
*director de seguridad y protección*  
Bob Gaekle  
rgaekle@holyfamilylaporte.org

**Bulletin** | *boletín*  
bulletin@holyfamilylaporte.org



**Holy Family Parish Sacred Heart** | *Sagrado Corazón*  
201 Bach Street  
**(Main Parish Office | oficina principal)**  
219-362-2815  
office@holyfamilylaporte.org  
Office Hours - Monday-Friday 8am-5pm

**Receptionists:**  
AvaLee Abraham  
ava@holyfamilylaporte.org  
Marcia Krueger  
marcia@holyfamilylaporte.org  
Cheryl Metyko  
cheryl@holyfamilylaporte.org

**St. Peter** | *San Pedro*  
1101 Michigan Ave

**St. Joseph** | *San José*  
109 "C" Street

**We want to pray for you!**  
To submit a prayer request, scan the QR code or fill out the request form online:  
[www.holyfamilylaporte.org/prayer-request](http://www.holyfamilylaporte.org/prayer-request)  
To call in a prayer request, contact Donna Wagner at 219-363-1516 or Jean at 219-716-3414.



Thank you to our bulletin Sponsor(s) of the Week:

**Daniel W. Fridh — D.D.S., M.A.G.D.**  
Comprehensive Dental Care  
*See full ad on the back of this week's bulletin!*