

# 2025 ANNUAL REPORT

## Ozark Electric Cooperative

*Owned by those we serve*

# 2025 *By The Numbers...*

**2** Major Storms  
(April & June)

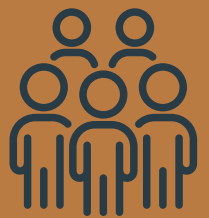
*Only one covered by FEMA, reimbursed early 2026*



**20** New Miles  
of Line Built



**430** New  
Accounts



**\$2M+** In Storm  
Damage



**\$2.5M** In Capital  
Credits



**\$3.5M** In One-Time  
Bill Credits



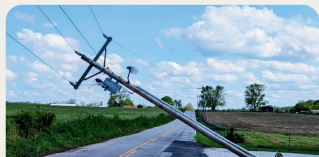
# COOPERATION AMONG COOPERATIVES



*OEC Crews Provide Mutual Aid to Ozark Border*

## MARCH 2025

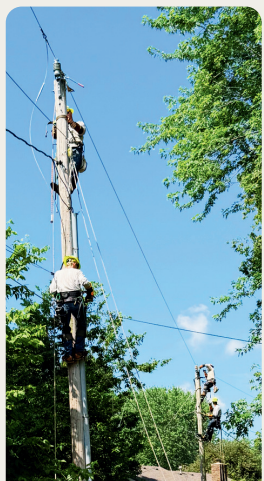
OEC provided mutual aid to Ozark Border Electric Cooperative (Poplar Bluff) after a storm left 10,000 members without power and 333+ broken poles.



*Emma: 60+ Broken Poles Across Our Service Area*

## JUNE 2025

The 29th proved to be an unlucky day with Summer Storm Gertrude (named internally) hitting our service area two months after Emma, leaving 10,000 members without power for the second time in 2025. Extensive tree damage caused extended outages for many members. Mutual aid crews from Barry (Cassville), Barton (Lamar), Southwest (Bolivar), and White River (Branson) Electric Cooperatives responded to help alongside our crews and contractors. Power was restored to most members in less than three days.



*Gertrude: Final Stretch*



## JANUARY 2025

OEC provided mutual aid to Black River Electric Cooperative (Fredricktown) after a winter storm affected 12,000+ members in Black River's service area. We sent six linemen to assist in restoration efforts.



*Emma: Trees Cleared, Restoration Begins*

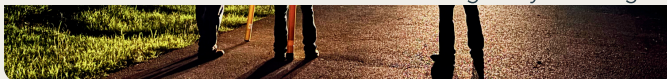


## APRIL 2025

Spring Storm Emma (named internally for organizational purposes) landed on April 29, hitting the OEC service area hard with multiple tornadoes causing widespread damage and power outages. Nearly 10,000 members were without power, the highest since the 2007 ice storm. Damage was spread across multiple counties, making quick restoration a difficult task. Mutual aid from White River (Branson) and Laclede (Lebanon) Electric Cooperatives assisted in restoration efforts. Power was restored to most members within two days.



*Gertrude: Power Restored to Final Outages by Headlight*



# DIRECTORS

Your Board of Directors are residents of our local communities, representing each of the nine districts within Ozark Electric's service area. Directors serve a three-year term, with elections taking place each year during the Annual Meeting.



**STEVE STONE**

President, District 9



**DAREN BOWLES**

Vice President, District 2



**RYAN POST**

Secretary/Treasurer, District 5



**WENDALL BOLIN**

District 1



**MISTY SKINNER**

District 3



**SCOTT MAHAFFEY**

District 4



**MITCH SIMS**

District 6



**KOLBY KALLWEIT**

District 7



**O.D. COPE**

District 8

# From Your Board President

## Powering Growth While Protecting Our Members

It seems that every meeting we go to lately, the main focus is on data centers and AI. Demand for electricity is growing across the world, driven by population growth, electrification, and advancing technology. Even without large industrial projects or data centers, local electric cooperatives must plan for steady, long-term growth in energy use and capacity. For Ozark Electric Cooperative, meeting that demand begins with a clear responsibility: protecting the interests of our local members while preparing the system for the future.

As homes are built, farms modernize, and businesses expand, additional generation and infrastructure are required to ensure reliable service during peak demand. These investments must be planned years in advance. Thoughtful planning allows us to support normal growth in our communities without sudden rate impacts or unnecessary financial strain on members. At the same time, economic development opportunities, such as data centers, are reshaping how utilities plan for future capacity. Data centers can significantly increase electricity demand, accelerating the need for new generation resources. When structured correctly, however, these projects can benefit both the cooperative and the communities we serve.

If large energy users are willing to pay the full cost of the generation and infrastructure required to serve their load, they can help strengthen the electric system without shifting costs onto existing members. I predict that advances in technology will improve data center energy efficiency over time. As those efficiencies are realized, the excess generation capacity they helped fund will help Ozark Electric meet long-term capacity needs for homes, farms, and businesses - **supporting community growth at no additional cost to members.**

The key is ensuring fairness. Growth in generation must be guided by disciplined governance and sound agreements that protect residential, agricultural, and small business members from subsidizing large loads. When economic development pays its own way, the entire membership benefits from a stronger system, improved reliability, and expanded opportunity. Reliable, affordable electricity is a cornerstone of economic development. It supports local employers, attracts new investment, strengthens healthcare and education, and improves quality of life across our service territory. By carefully planning for growth and evaluating opportunities through a member-focused lens, Ozark Electric helps create the conditions for thriving communities today and for generations to come.

Through trusted leadership and responsible planning, Ozark Electric remains committed to delivering safe, reliable, and affordable power while building a strong future for the communities we serve.

## Steve Stone

Board President, Ozark Electric Cooperative



*District 8 Board Director O.D. Cope (left) and District 9 Board Director and President Steve Stone (right) enjoy a meal at Member Appreciation Days in Crane.*

# MANAGEMENT TEAM



**PATRICK OEHLISCHLAGER**

General Manager/CEO



**JON DAVIS**

Manager of Member Services



**HOLLY HODGSON**

Manager of Billing Services



**TORI MORRIS**

Chief Financial Officer



**KEN RAMING**

Manager of Engineering



**STEVE SWEARINGEN**

Manager of Operations

## 7 COOPERATIVE PRINCIPLES

Electric cooperatives locally and around the world are guided by a set of core values, known as the 7 Cooperative Principles. Together, these principles ensure that cooperatives are member-owned and member-governed, are committed to improving the quality of life in the communities they serve, and stay true to their mission of providing safe, reliable, and affordable electricity for all members.

- Voluntary & Open Membership
- Democratic Member Control
- Members' Economic Participation
- Autonomy & Independence
- Education, Training, & Information
- Cooperation Among Cooperatives
- Concern for Community

# From Your General Manager

## Strengthening Reliability Amid Continued Growth and Increasing Energy Demand

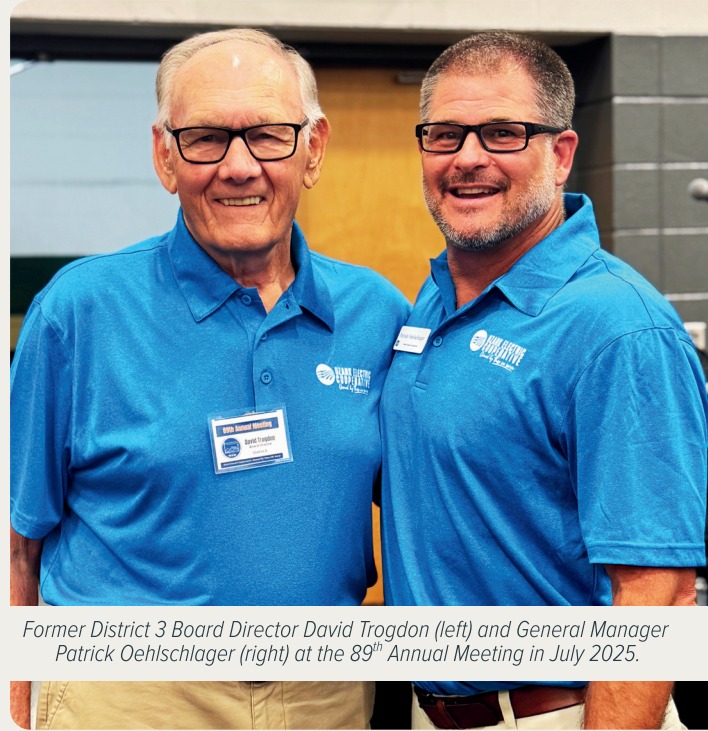
As we look back at another year at Ozark Electric Cooperative one constant remains - growth. Your cooperative continues to expand with new members joining the family. More meters, lines, poles, and right-of-way to manage. It's hard to express the immense effort and coordination required by your OEC employees to keep up with the growth while maintaining the already existing infrastructure. With nearly 5,000 miles of line OEC is in a constant effort to manage system upgrades and replacement of aging infrastructure in a fiscally responsible way. Protecting it with right-of-way management and ongoing pole inspections and replacement are at the top of the list. These actions help us achieve two of our long-standing priorities of safety and reliability.

Growth also brings challenges to deliver enough energy to keep up with it. If you follow the news concerning the nation's grid you no doubt have heard about the energy boom that is occurring. If residential and commercial growth isn't enough, throw in the energy appetites of AI and data centers. Our Board President, Steve Stone, addresses these new challenges with his contribution to this annual report. Be sure to read it.

When considering the challenges facing us, we are resolute in continuing the effort necessary to achieve success. We will work with our power provider to ensure we have the generation needed to power your endeavors. Our Board of Directors is engaged, informed, and motivated to lead this cooperative in a way that keeps promises to past, present, and future members. In a day and age when we are experiencing a period of incredible energy demand and GROWTH, your cooperative is up to the challenge.

## Patrick Oehlschlager

General Manager, Ozark Electric Cooperative



Former District 3 Board Director David Trogdon (left) and General Manager Patrick Oehlschlager (right) at the 89<sup>th</sup> Annual Meeting in July 2025.



# FINANCIAL REPORT

## BALANCE SHEET

<b>ASSETS</b> <i>(what we own)</i>	<b>2025</b>
Total Utility Plant in Service	\$225,273,106
Construction Work in Progress	\$1,133,730
Less: Depreciation	(\$62,810,747)
<b>Net Value of Utility Plant</b>	<b>\$163,596,089</b>
Investments	\$46,559,727
General Funds	\$2,525,917
Temporary Investments	\$4,946,503
Accounts Receivable	\$2,394,801
Materials & Supplies	\$2,658,680
Prepayments	\$380,079
Other Current & Accrued Assets	\$3,062,022
Deferred Debits	\$2,601,891
Other	\$354
<b>TOTAL ASSETS</b>	<b>\$228,726,063</b>

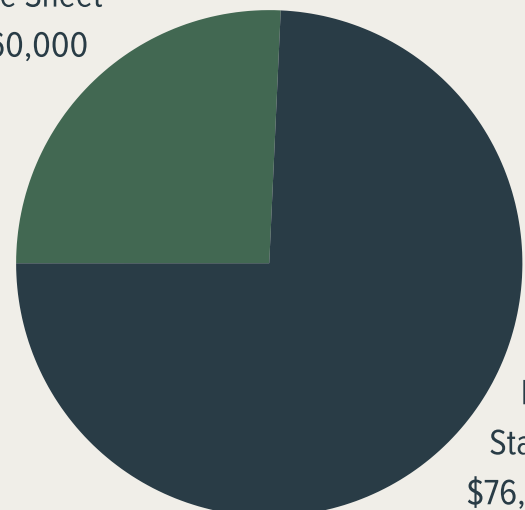
<b>LIABILITIES</b> <i>(what we owe)</i>	<b>2025</b>
Patronage Capital	\$109,944,375
Operating Margins	\$14,531,879
Non-Operating Margins	\$255,176
Other Margins & Equities	(\$5,362)
<b>Total Margins &amp; Equities</b>	<b>\$124,726,068</b>
Long-Term Debt	\$83,200,230
Asset Retirement Obligations	(\$143,115)
Notes Payable	\$2,500,000
Accounts Payable	\$4,947,750
Consumer Deposits	\$607,568
Current Maturities - Long Term Debt	\$6,140,724
Other Current & Accrued Liabilities	\$5,002,813
Deferred Credits	\$1,744,025
<b>TOTAL LIABILITIES</b>	<b>\$228,726,063</b>

## OPERATIONS STATEMENT

<b>REVENUE</b>	<b>2025</b>
Operating Revenue & Patronage Capital	<b>\$82,666,888</b>
<b>EXPENSES</b>	
Cost of Purchased Power	\$41,609,110
Operations & Maintenance	\$15,086,858
Administrative & General	\$3,278,328
Consumer Accounts	\$1,785,955
Depreciation	\$6,026,797
Taxes	\$124,670
Interest on Long-Term Debt	\$3,831,192
Other Deductions	\$301,743
Customer Service/Sales Expense	\$880,788
Interest Expense - Other	\$143,596
<b>Total Cost of Electric Service</b>	<b>\$73,069,037</b>
Patronage Capital & Operating Margins	<b>\$9,597,851</b>
Non-Operating Margins (Interest/Other)	\$255,175
G&T Capital Credits	\$4,079,813
Other Capital Credits/Dividends	\$854,217
<b>TOTAL PATRONAGE CAPITAL</b>	<b>\$14,787,056</b>

## BUDGET MAKEUP

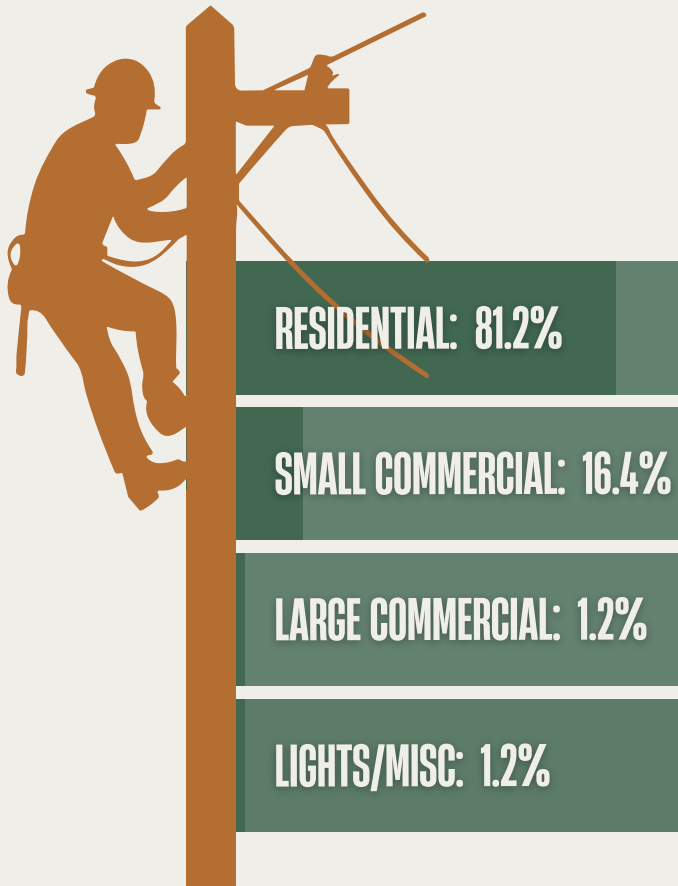
Balance Sheet  
\$26,360,000



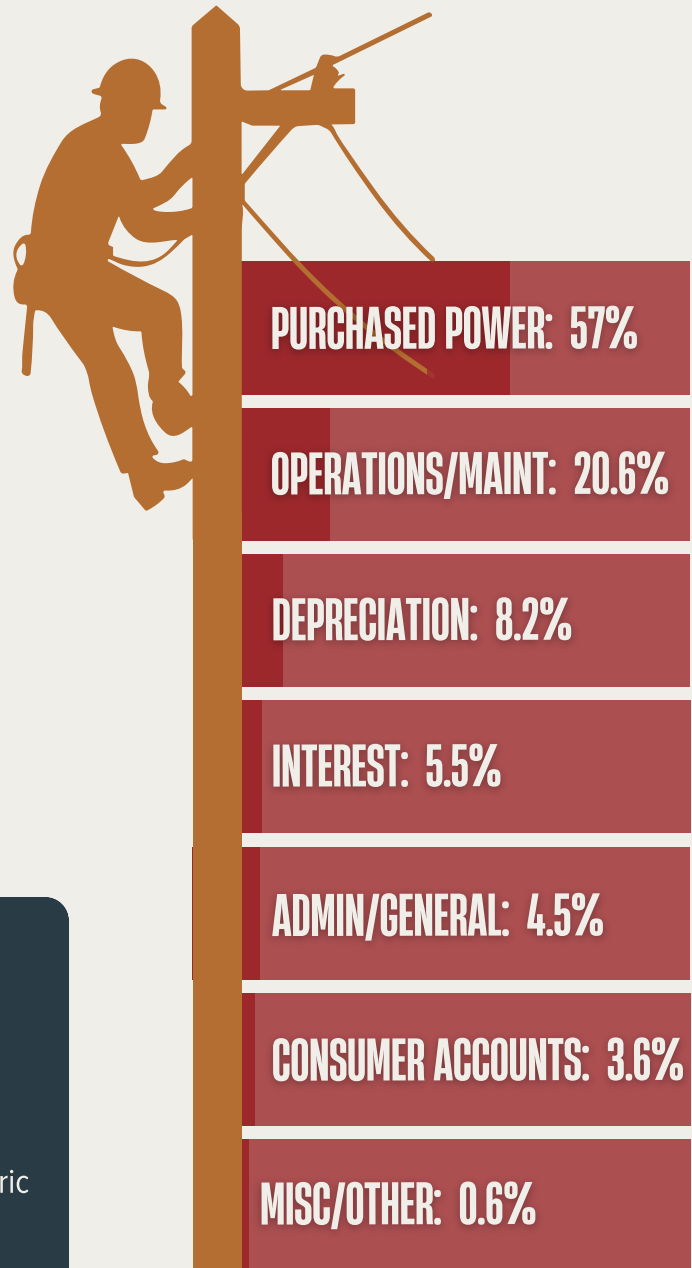
Income Statement  
\$76,117,000



## 2025 REVENUES



## 2025 EXPENSES



### HOW IS YOUR COOPERATIVE FINANCED?

Every electric cooperative is funded through a combination of:

1. **Member Rates:** Revenue collected through electric bills.
2. **Long-Term Loans:** Financing used to build large infrastructure projects over time.
3. **Member Equity:** The portion of the system owned outright by members (accumulated margins).

# From Your Chief Financial Officer

## Our Financial Position: Strength & Balance

Over the past two years, your cooperative has navigated a period of change that ultimately strengthened our financial foundation.

### Long-Term Stability

In 2024, we introduced a residential demand rate designed to better align rates with the cost of delivering power to you, our members. As part of a broader financial approach, the Board chose to move forward without issuing new long-term debt during 2024. This conservative approach meant relying more heavily on operating revenues to fund system investments.

### Building Financial Strength

Electric cooperatives require significant infrastructure — substations, power lines, poles, transformers, and technology — all of which must be maintained and upgraded over time. These assets are typically financed through a balanced combination of rates and long-term borrowing. By temporarily pausing new borrowing and maintaining strong operational discipline, the cooperative strengthened its financial position.

At the end of 2023, equity was 47.8%. By the end of 2025, equity increased to 54.5%. Equity represents the portion of the cooperative owned outright by its members rather than financed with debt. Strong equity provides stability during storms, economic uncertainty, and market volatility. It protects the long-term health of your cooperative. Because of this strong performance, the Board plans to refund capital credits in August 2026 — returning margins to the members who generated them.

### A Balanced Path Forward

While strong equity is essential, maintaining balance is equally important. Responsible long-term borrowing allows infrastructure costs to be shared across the generations of members who benefit from those assets. With equity at 54.5%, the Board has determined that reintroducing long-term financing is appropriate. This balanced approach allows continued investment in reliability while avoiding a rate increase in 2026.

Your cooperative remains financially strong, carefully managed, and focused on long-term stability for the 28,000 members we serve.

## Tori Morris

Chief Financial Officer, Ozark Electric Cooperative



**OEC ADDED \$7  
MILLION IN TOTAL  
UTILITY PLANT IN  
2025 WITH 430  
NEW ACCOUNTS**

# ROUND-UP FOR OUR ROOTS

## Giving Program Coming to Ozark Electric in 2026



At Ozark Electric, we believe that when neighbors come together, even the smallest actions can make a significant impact. We're proud to introduce a round up program, turning extra change from everyday bills into opportunities for good. In the coming months you'll begin to see more information on this exciting program. As a member-owned cooperative, our purpose extends beyond providing safe and reliable power; we exist to serve others and improve quality of life throughout our service area. This grant program will benefit local non-profits, civic organizations, local teachers, and provide additional funds for our college/trade school scholarship program. Together, we can create stronger communities - one penny at a time.

## WHAT ARE CAPITAL CREDITS?

Capital Credits are just one of the amazing benefits of being a member of Ozark Electric Cooperative. We're member-owned, democratically controlled, and independent from shareholders. A cooperative does not earn profits in the sense that other businesses do. Instead, any margins, or revenues remaining after expenses have been paid, are allocated to the members in proportion to their usage of the cooperative's services. Capital Credits represent each member's share of the cooperative's margins and ownership. Each year the Board of Directors determines whether the co-op's financial position permits the return, or retirement, of capital credits and, if so, what amount of Capital Credits will be retired. The Board also determines what method will be used to return these credits to our members.




**IN 2025, OEC RETIRED \$2,573,703 IN CAPITAL CREDITS FOR 100% OF 2006 AND 75% OF 2007. THESE CREDITS WERE RETURNED TO MEMBERS WHO WERE ACTIVE DURING THESE YEARS.**


# ENGINEERING & OPERATIONS


Our Engineering and Operations Departments are the backbone of our cooperative - ensuring the reliable and sustainable delivery of electricity to over 36,000 meters. Our professional engineers, field staking technicians, facilities coordinator, GIS coordinator, and contract coordinator keep your system running. They design and maintain our power distribution systems, plan for system upgrades, oversee major projects, troubleshoot issues, ensure safety codes and regulatory standards are followed, and provide support to members for new construction, new service installations, and net metering.

While Engineering designs the system... it's up to our Operations team to keep the lights on through regular maintenance, outage restoration, and new construction/service projects. Our dispatchers, linemen, superintendents, right-of-way coordinators, and power quality team work together to install poles, meters, and lines for new construction or projects, regularly inspect existing meters and equipment, respond quickly to power outages, and oversee our right-of-way and pole inspection programs. Our linemen are some of the best in the business and ready to respond 24 hours a day, seven days a week, 365 days a year in the harshest weather conditions.

 **81** Net Meters Approved or Set  
*43 Set, 38 Agreements Reviewed/Approved*

 **1,392** Work Orders - Engineering

 **2,914** Job Briefings & Tailgates

 **4,959** Miles of Line on our System  
*4,244 Overhead, 715 Underground*

 **12,343** Service Orders - Operations



**Average Restoration Time**  
**1 HR 40 MINS** ★



# MAINTENANCE = RELIABILITY

## Ongoing System Maintenance Vital to Service Reliability

Did you know that Ozark Electric's system includes nearly 5,000 miles of line and over 125,000 poles? A system of this magnitude requires significant investment and maintenance through vegetation management and pole replacement programs.

### Right-of-Way/Vegetation Management

Electric cooperatives play a vital role in delivering reliable electricity to its member-owners, often across large rural areas with thousands of miles of power lines. One of the most critical components to that reliability is a robust and well-managed right-of-way (ROW) program. Trees and vegetation are one of the most common causes of power outages for distribution systems like ours. During storms, high winds, ice, or even heavy rain can cause limbs, or entire trees, to fall into our lines. By routinely trimming and managing vegetation growth, we can significantly reduce the risk of outages. We utilize independent contractors for routine maintenance including mechanical clearing and herbicide application. In 2025, we contracted 626.24 miles of right-of-way cut on our system. In 2026, we've contracted over 1,200 miles.

### Pole Replacement Program

Owned by those we serve since 1937... yes, that's 89 YEARS of providing safe and reliable electricity to our members. Safety and reliability can only be achieved through continual maintenance on our system, including regular inspections of over 125,000 poles. In 2025, inspections were performed on 11,480 poles and 1,200 poles were changed. We work with a private contractor to conduct these important inspections.

### 2026 RIGHT-OF-WAY CLEARING SCHEDULE (BY SUBSTATION)

ASH GROVE  
BOWERS MILL  
BUTTERFIELD  
CLEVER (FEEDER 3)  
EAST PURDY  
GREENFIELD  
ROUND GROVE (FEEDER 5 & 8)  
VERONA



## 90TH ANNUAL MEETING FRIDAY, JULY 31

- ✓ **NEW** Location - Aurora High School
- ✓ **EXPANDED** Voting Options

*Save  
The  
Date*

# BILLING SERVICES

Your Billing Services Representatives (BSRs) play a vital role in everyday operations at OEC. They assist members with setting up new service, transferring service, processing payments, updating account information, processing, printing, and mailing bills, walking members through their bills or energy usage, and so much more.

If you've visited or called one of our offices, you've interacted with one of our BSRs. They are our frontline ambassadors, ensuring professionalism, accuracy, and compassionate service from the very beginning.

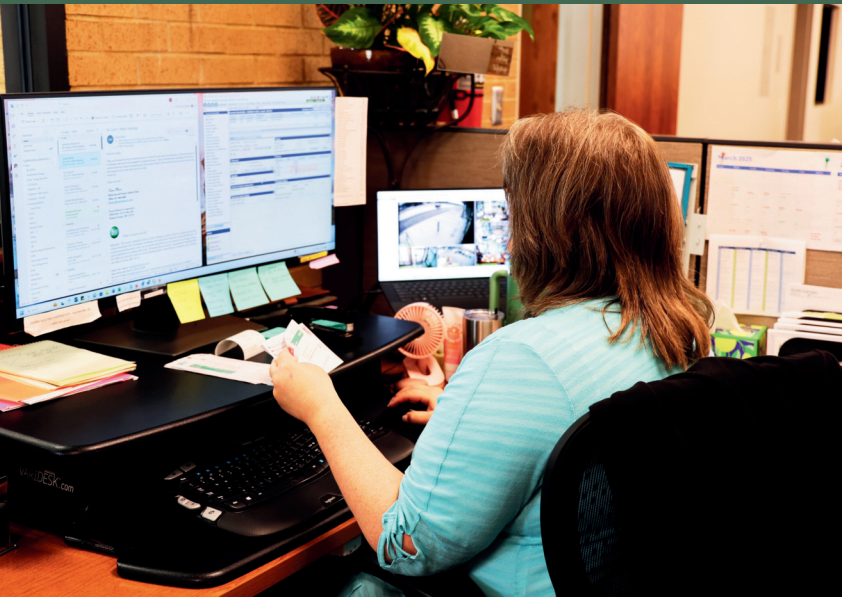
We have several billing options including auto pay, prepay, and budget billing. Contact our team to talk through these options and find what works for you!

 **39,728** Phone Calls to Billing Services

 **208,794** Paper Bills Mailed

 **432,587** Total Bills Processed

**GO PAPERLESS!** In 2025, we mailed nearly 209,000 paper bills - that's over 17,000 per month! Help us lower costs by choosing paperless billing.



# IT & CYBERSECURITY

When most members think about electricity, they think of poles, wires, and substations. What they don't see is the digital infrastructure that supports every part of our operation, from billing to outage management to internal communications. Over the past year, OEC's IT Department continued to strengthen the systems that protect member data, secure operational technology, and ensure uninterrupted service.

Cyber threats are no longer rare events - they are constant and automated. Every internet-facing system is probed continuously. The IT Department monitors and maintains 24/7 network security monitoring, firewall threat updates, malware filtering and intrusion prevention systems, e-mail and file security policies, and internal networks protecting billing and operational systems.

Their responsibility is straightforward: protect member data, protect operational systems, and prevent service disruption.

 **171,695** Attacker Connection Attempts

 **326,276** Malware Delivery Attempts

 **1,718,978** Malicious Connection Attempts

# MEMBER SERVICES

Your Member Services Department is dedicated to building strong relationships with our members through communications, community outreach programs and events, energy services, rebate programs, economic development, electrical safety education, and more. The department serves as a bridge between the cooperative and our members, emphasizing engagement, investment in our local communities, education, and service.

Communication is the key to ensuring our members are as informed as possible! Stay connected with us by reading your Rural Missouri magazine, following us on social media, reading cooperative e-mails and bill messages, watching the General Manager's update video, visiting our website, or attending our educational programs and events.

 **1,700** Youth & Adults Reached in Safety Presentations

 **146,008** Website Visits to ozarkelectric.com

 **2,655,136** Facebook & Instagram Content Views

We hope to see you soon at one of our many programs and events! Check out our outreach programs on the next page and keep an eye out for info on future programs, Member Appreciation Days, and more exciting opportunities!



# ENERGY SERVICES

Take control of your energy usage! Ozark Electric offers rebate programs, home energy audits, and other tools to help manage and monitor your usage.

Rebates are available through our partnership with the Take Control and Save program, funded through our generation cooperative, Associated Electric (AECI). The program encourages energy efficiency in your home and businesses. In addition to rebates, we offer home energy audits in partnership with OACAC. Through this program, a Missouri state-certified home energy auditor conducts a thorough inspection of your home's energy usage and efficiency and provides recommendations to improve energy efficiency and reduce utility costs. A rebate is available after completing weatherization measures recommended in the energy audit.



Did you know you can monitor your daily energy use through Usage Explorer in SmartHub? Contact us for assistance with using this program!

 **32** Home Energy Audits

 **132** Rebates Processed

 **\$43,670** Amount Rebated Back to Members\*

*\*Funded through AECI's Take Control and Save Program*

# OUTREACH PROGRAMS

We love serving our local communities, schools, students, and of course, our members! At Ozark Electric, we offer a variety of engagement opportunities throughout the year and are always looking for additional ways to reach you. From educational programs to member appreciation events to the Youth Tour trip, we've got something for everyone!

## PowerOn Safety



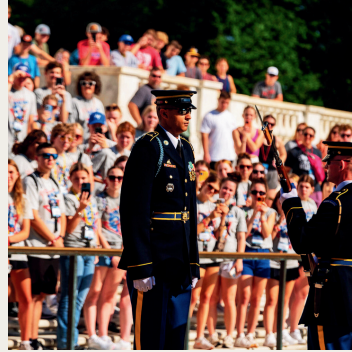
Offered anytime for local schools, first responders, equipment operators, & more!

## CYCLE



Leadership conference for sophomores! Applications open January 2027.

## Youth Tour



Trip to Washington DC for juniors! Applications open January 2027.

## College Scholarships



College/trade school scholarships! Applications open January 2027.

## Teacher Education



Energy in Today's Classroom offered by Central Power. Space is limited!

## Member Appreciation



Member Appreciation events held in October! Stay tuned for 2026 dates.

## Co-op 101/After-Hours



Educational after-hours programs held quarterly! Additional dates coming soon.

## Coming Soon!



We have more programs up our sleeves like Co-op Camp, Coffee with the Co-op & more! Stay tuned!

# ECONOMIC DEVELOPMENT

In 2025, Ozark Electric Cooperative continued to strengthen its role as a catalyst for regional economic growth by supporting infrastructure, business expansion, and community development initiatives across its service territory. Key efforts included advancing participation in the USDA Rural Economic Development Loan & Grant (REDLG) program, positioning the cooperative to assist local businesses and community organizations with access to low-interest financing for job creation and capital investment. Additionally, we maintained strong partnerships with local governments, chambers of commerce, and regional development organizations to support business recruitment, retention, and expansion. These collaborations helped identify infrastructure needs, promote available sites, and reinforce the cooperative's commitment to sustainable, community-driven growth. Through these initiatives, we reaffirmed our commitment to the communities we serve by supporting local jobs, strengthening small businesses, and investing in opportunities that improve quality of life for our members.


# EDUCATION AND TRAINING

Our cooperative is member-owned and built on principles of service, accountability, and community development. To maintain a high standard of service delivery and safety, continuous education and safety training are essential. Investing in the knowledge and skills of employees, board directors, and our member-owners ensures that everyone is educated and empowered to uphold cooperative values.

Safety is critical, not only for our lineworkers, engineers, and operations teams working in the field, but for our office staff and our members. Our operations team attends frequent safety meetings and trainings, and we have an in-house safety coordinator who ensures our team has the proper equipment and protective gear to do their job effectively and safely. Before starting every job, our line personnel conduct a job briefing, or tailgate, to talk through the job and any safety concerns. Our office employees train in CPR/First Aid/AED and emergency response. For our members, we offer PowerOn electrical safety presentations for our local schools, homeschool groups, first responders/emergency personnel, and other groups upon request. We also include safety information on our social media platforms, website, and Electric Sparks local pages in Rural Missouri magazine.

Our management team, board directors, and employees attend regular training programs to gain as much knowledge as possible to make well-informed decisions for the cooperative as a whole.

By building a culture that invests in educational opportunities and safety training, our teams remain knowledgeable, innovative, and prepared for the future.



**ANNUAL POLE TOP  
RESCUE TRAINING IS  
REQUIRED FOR OUR  
TEAM OF LINEMEN.**

**IN 2025, OEC WAS  
RECOGNIZED AT THE  
ASSOCIATION OF  
MISSOURI ELECTRIC  
COOPERATIVES ANNUAL  
MEETING FOR WORKING  
SAFELY, WITH A TOTAL OF  
495,188.80 HOURS  
WORKED WITHOUT A LOST  
TIME ACCIDENT.**





Associated Electric Cooperative Inc.

A Touchstone Energy® Cooperative 

# Protecting Members. Powering the Future.

As data centers and other large-scale energy users look to locate in the Midwest, Associated Electric Cooperative, alongside its six G&T cooperative-owners and the 51 distribution cooperatives they serve, have taken a proactive approach to ensure any new major power demands can be served reliably and fairly. Associated has historically served member load as it developed across the system; however, the concentrated and rapidly growing demand from data centers and other large loads presents new operational and financial challenges. The new Large Load Program safeguards system stability and protects members, while preparing the three-tier cooperative system for future load growth.

## Top 5 Takeaways on Associated Electric Cooperative's Large Load Program

### 1. Why a Large Load Program Exists

Rapid growth in data centers, AI facilities, and other large power users is creating new challenges for electric systems across the country. Associated Electric Cooperative and its members developed a *Large Load Program* to ensure any new major power demands can be served **reliably, fairly and without negative impacts on existing members**.

The program helps manage timing, scale and fair rates for potential new large loads, while maintaining system reliability and equity among all members.

### 2. Who It Applies To

The program applies to **any new member load requiring more than 50 megawatts (MW)** of capacity — generally large industrial or data center-type projects. These requests must go through a structured review process before being served.

### 3. How the Process Works

Before committing resources, Associated and the G&T cooperative-owner require detailed **transmission and capacity studies** to evaluate if the system can reliably serve the new demand and what system upgrades will cost the developer. Both a screening study and facilities study are paid for by the project developer upfront, and each project undergoes a **credit review** that requires confidentiality agreements (NDAs) among all parties.

### 4. Protecting Co-op Members

The goal is simple: **no added risk or cost to existing co-op members**. Before entering into any agreement, prospective large load member-consumers must:

- Pay the full cost of any transmission upgrades necessary to serve the load;
- Provide an upfront payment to ensure financial security and safeguard co-op members' interests;
- Agree to rates that reflect their cost to serve and protect co-op members from potential risk.

This approach ensures fairness and keeps system investments sustainable.

### 5. Planning Ahead for Growth

The Associated system is **not currently serving any large data centers**. The cooperative is building new generation projects — two simple-cycle natural gas peaking plants in Oklahoma and Missouri — **solely to meet existing member load growth and strengthen system reliability**, particularly during winter peaks.

Resource planning analysis of recent load growth trends have identified the potential need for future energy capacity as early as 2029, which would support the future of member energy needs while responsibly preparing for any large-load opportunities that may arise.



## MT VERNON MAIN OFFICE

10943 N. Hwy 39

*P.O. Box 420 Mailing Address*

Mt. Vernon, MO 65712

417.466.2144

## JAMES RIVER OFFICE

2007 James River Court

*P.O. Box 1050 Mailing Address*

Nixa, MO 65714

417.725.5160

## CAPE FAIR OFFICE

7928 State Hwy 76

*P.O. Box 287 Mailing Address*

Cape Fair, MO 65624

417.538.2273

## REPORT AN OUTAGE

Report Outages 24/7:

- 1.800.947.6393
- SmartHub
- [www.ozarkelectric.com](http://www.ozarkelectric.com)

## CONNECT WITH US

### On The Web

[www.ozarkelectric.com](http://www.ozarkelectric.com)

### On Social Media



### On YouTube

Scan the QR code to watch monthly update videos from our General Manager



### In Print

Opt-in to receiving the monthly Rural Missouri magazine

### In Person

Use the resources above to learn about our in-person events



# 2025 Annual Report

*Published March 2026*



**LAKE CROSSINGS IN THE CAPE FAIR AREA WERE COMPLETED IN EARLY 2026. THESE PROJECTS WILL PROVIDE ADDITIONAL CAPACITY AND IMPROVED RELIABILITY FOR MEMBERS IN THIS PORTION OF OUR SERVICE AREA.**