

HOT+TRAIL  
SERIES

SWISS CYCLING

LEYSIN  
LES MOSSES  
LA LÉCHERETTE

Télé Leysin  
Col des Mosses  
La Lécherette SA  
www.tlml.ch



LEYSIN  
OXYGENE  
DES ALPES  
ALPES VAUDOISES

# LEYSIN | 7-8-9 JUILLET 2023

## CHAMPIONNATS SUISSES

# DESCENTE VTT





LAUSANNE - BERNE

CFF RAILWAY

AIGLE  
RAILWAY  
STATION

MARTIGNY - BRIG

AIGLE - LEYS  
MOUNTAIN TR

A9





# Access by train

TO LEYSIN FROM BERN - 1H33MIN

- Take **IR15** or **IC1** towards **Lausanne**
- In Lausanne take **RE (St-Maurice)** or **IR90** towards **Brig**
- Go out in **Aigle**
- in **Aigle** take **Aigle - Leysin** mountain train (each :55)
- Go out in **Leysin - Feydey** (3rd Stop)

TO LEYSIN FROM BRIG - 1H44MIN

- Take **IR90** towards **Geneva-Airport**



LAUSANNE - BERNE

A9

HIGHWAY A9/E27/E62  
EXIT 17 - AIGLE

ROAD 11

TO LEYSIN

AIGLE

A9

MARTIGNY- BRIG





**LEYSIN**

**LE SÉPEY**

**RACE Paddock 1**

**RACE Paddock 2**

# Access by car.

TO LEYSIN FROM BERN - 1H33MIN

- Highway **A12** towards **Fribourg/Vevey**
- In Vevey take **A9** towards **Gd-St-Bernard**
- Go out **exit-17** in **Aigle**
- in **Aigle** follow **Le Sépey - Leysin**

TO LEYSIN FROM BRIG - 1H44MIN

- Highway **A9** towards **Sion/Martigny**
- Keep going until **Aigle**



# The Race Track.

## Zone 1 - Start

The departure platform will be installed in Mayen at an altitude of 1900m, it will be covered by a tent. The drivers will start on a fast part overlooking the village and then have to negotiate a "Road Gap" over the Mayen road before entering the fast part of the "Poteaux" track.

## Zone 2 - Bike Park style

The second part of the track is mainly composed of "Bike Park" type bends with excellent flow. A technical stone quarry will have to be negotiated in the middle of this part as well as several natural parts in the woods.

## Zone 3 - Technical & Rocky sections

This area starts with fresh flat turns then dives into a steep and very technical scree to negotiate with speed. The pilots then enter a fast wooded area with several jumps. This part was used for the Downhill Swiss Championships in 2002, however, and many new features have been added over the years.

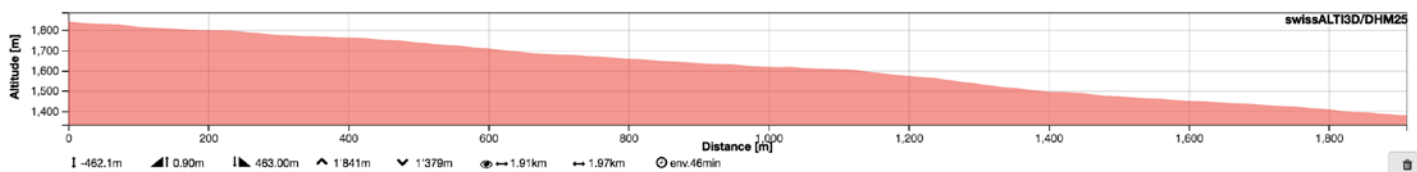
## Zone 4 - Jump Line

At the bottom of the course the pilots will join an aerial section composed of a sequence of jumps and several raised turns. They will leave the official track for a last wide and open part in the grass before the finish drop.

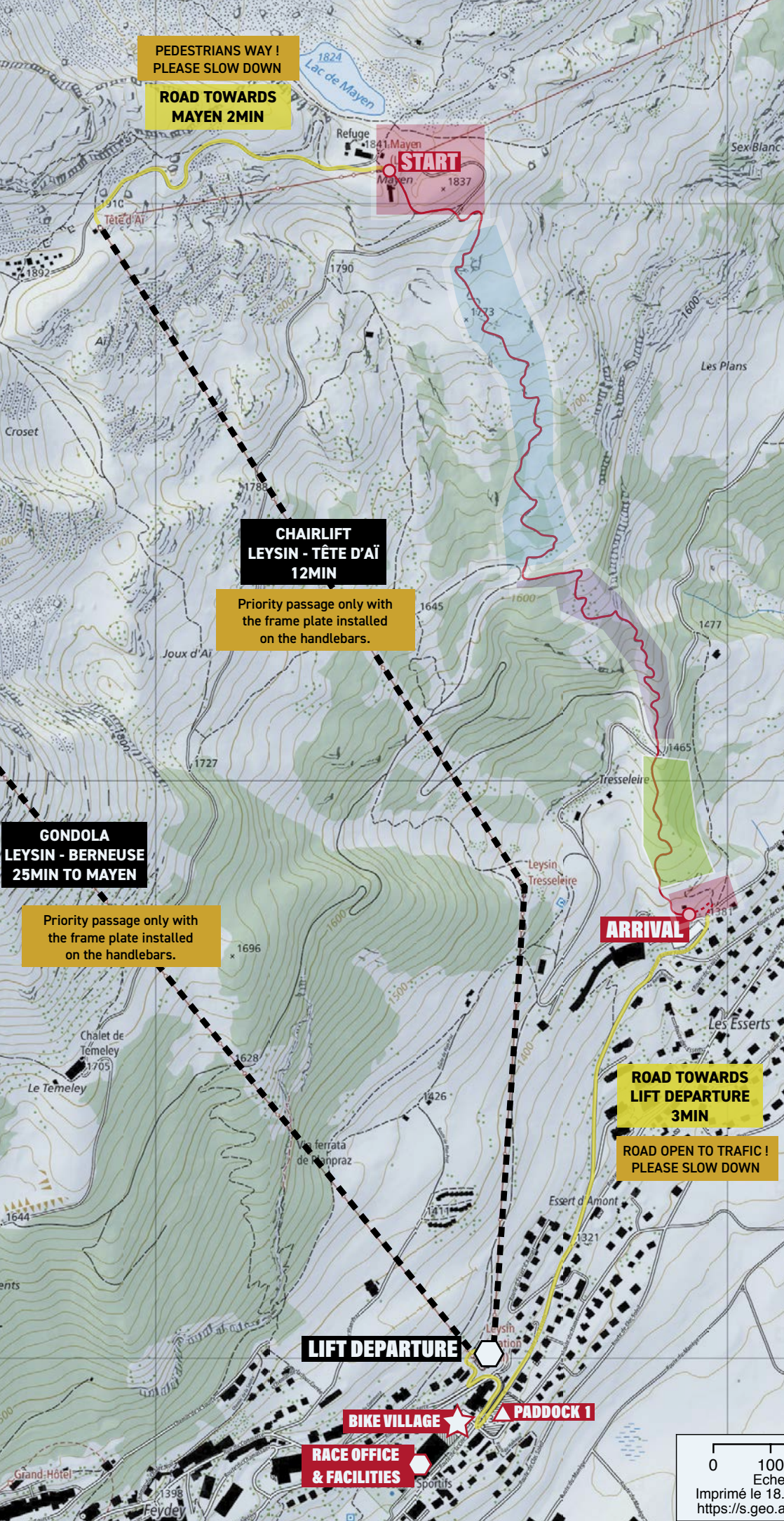
## Zone 5 - Finish

At the bottom, racers will leave the track to take two fast open grass corners just before to pass the finish line.

## Track profil







2,2 km

460m D-

Start  
1841mFinish  
1381m



# Event Program.

FRIDAY 7th July 2023			
Title	Cat.	Schedules	Place
Inscriptions	ALL	8:00 - 10:00	Race Office
Plates Removal	ALL	8:00 - 10:00	Race Office
Track Walk	ALL	08:00 - 11:00	Race Track
Training on OPEN TRACK	ALL	11:00 - 17:00	Race Track
SATURDAY 8th July 2023			
Title	Cat.	Schedules	Place
Inscriptions	ALL	8:00 - 10:00	Race Office
Plates Removal	ALL	8:00 - 10:00	Race Office
Training	ALL	09:00 - 11:30	Race Track
Training	Licenses cat.	11:30 - 12:30	Race Track
Seeding Run	ALL	13:00 - 17:00	Race Track
After-Bike	ALL	16:00 - 23:30	BIKE VILLAGE
SUNDAY 9th July 2023			
Title	Cat.	Schedules	Place
Training	ALL	09:00 - 11:30	Race Track
Training	Licenses cat.	11:30 - 12:30	Race Track
Finals	ALL	13:00	Race Track
Podiums	ALL	30min afeter the end of the race	BIKE VILLAGE
Music & Closing “Apéro”	ALL	start after Podiums	BIKE VILLAGE



# Racers Infos.

## Race Office

### Leysin Tourism Office - Desk

On site inscriptions - Plates removal - Race infos

Opening hours : Daily | 8.00 - 10:00

## Lift Access

### 3-day pass included with registration

Lift pass will be given with the plates. Priority access to the lift only with the race plate installed.

In the access lines, please use the line reserved for athletes. Gondola athletes only / Chairlift athletes priority but open for public as well.

## Facilities

### Showers & Changing room

### Leysin Swimming Pool Center (Tourism Office building)

Showers and changing rooms (separate for men and women) for pilots are located in the sports centre of the pool.

Please follow the signs for access and respect the cleanliness of the area.

## Paddocks

### Overnight stays & team pits

<https://www.google.ch/maps/@46.341354,7.0178337,91m/data=!3m1!1e3>

### Paddock N°1

### Paddock N°1 - Parking "Place Large" - Lift Departure

A space for "van & camping car" will be available there (first come first served).

Please respect the the defined spaces and markings on the ground so that everyone has a place to go.

In Paddock N°1 and Gondola lift departure a space will be reserved as *Mechanic pits* in order to provide a space close to the race for racers that spend the week-end in Paddock N°2. Pilots could set up their tents, bike stands, etc for the day here.

### Paddock N°2 - "Camping car area" Leysin - Hockey Centre

Paddock 2 spot (van & camping car parking) will be available at the "camping car area" of Leysin at the bottom of the village next to the ice rink in order to park the vehicles of drivers spending the night there and didn't have found a spot in paddock 1.

Overnight stays : 10.- CHF (per night to be pay at the sport centre)

Includes the communal tourist tax and an official garbage bag which will be distributed.

### Paddock N°2

<https://www.google.ch/maps/@46.341354,7.0221067,51m/data=!3m1!1e3>

## Hotels

### Central Résidence & SPA\*\*\*

[www.hotelcr.ch](http://www.hotelcr.ch) | From 30.- CHF per night/per person (room of 5 person) to 80.- CH per night/per person (single room).

<https://www.hotelcr.ch/home>

### Alpine Classic\*\*\*

[www.hotelcr.ch](http://www.hotelcr.ch) | From 30.- CHF per night/per person (room of 5 person) to 99.- CH per night/per person (single room). Breakfast included.

<https://www.classic-hotel.ch/>



---

## Category

### Swiss Championships - License Cat. (CH pilots only)

Elite Men | 2004 to +  
Elite Women | 2004 to +  
Pro U19 Men | 2005 to 2006  
Pro U19 Women | 2005 to 2006  
Pro U17 Men | 2007 to 2008  
Pro U17 Women | 2007 to 2008  
Pro Masters Men | 1988 to +

### Hot Trail Serie - Non-license Category

Open Men | 1989 to 2004  
Open Women | 2004 to +  
Junior U19 Men | 2005 to 2006  
Junior U19 Women | 2005 to 2006  
Youth U17 Men | 2007 to 2008  
Youth U17 Women | 2007 to 2008  
Youth U15 Men | 2009 to 2012  
Youth U15 Women | 2009 to 2012  
Open Masters Men | 1979 to 1988  
Masters 2 Men | 1976 to +

---

## Hot-Trail Serie

### Hot Trail Serie - Scoring of points

Points for the Hot-Trail Serie are scored for all categories as follows :

Saturday : Seeding Run counts for Hot-Trail points  
Sunday : Finals Run counts for Hot-Trail points

---

## Rules

All athletes must read the official race rules attached to this document.

Swiss Cycling official rules shall prevail.

---

## Infos

All athletes will be included in a What's App Infos group.

Daily infos will be published on it.

---

## Contacts

### Event Director

Brice Canteot | bikepark@tlml.ch | +41 24 494 16 35

---

**See you soon in Leysin !**

**Registration link :**

<https://www.racement.com/de/Rennen/2023/HoT/Leysin-Schweizer-Meisterschaft>