

CREMATION CHOICES



921 South US Hwy 27, Minneola, Florida 34715
(352) 394-8228
www.cremationchoicesfl.com

PRICE INFORMATION

These prices are effective as of **April 13, 2026**, and are subject to change without notice.

This packet contains:

Payment Policy

General Price List

Cremation Packages

Casket/Outer Burial Container Price List

“A lower cost alternative”

Cremation Choices offers a lower cost alternative to other funeral homes in the area. We offer several cremation packages to choose from, or you can put together your own package by selecting from the General Price List.

Payment Policy

We are a family-owned business that will treat your family like our own. In an effort to provide your family with the level of service you expect while minimizing your expenses, we rely on our clients to select their choice related to payment prior to services being rendered.

If payment arrangements are not finalized no later than 24 hours prior to services, services and/or final disposition would and/or will be delayed/postponed until payment arrangements are completed.

We regret any inconvenience or undue distress this may cause, but due to the nature of our business and past experience, we must enforce this payment policy.

For your convenience, we accept the following forms of payment:

Checks (Personal, Business or Cashier)

Cash



Money Order

We will also accept Assignment of insurance on verified life insurance policies, that are over 2 years of age, as payment towards the services and merchandise portion of the funeral expenses. All cash advance items must be paid prior to services being rendered.

There will be a \$175.00 insurance assignment processing fee.

Payments by Estate – All financial arrangements are with the purchaser, not with the estate of your loved one. We require that a member of the family pay funeral expenses and file their claim for reimbursement with the decedent's estate.

Cash Advances

This represents items that may have to be paid in advance separately. Much of the time we are able to include these charges on the contract, but certain situations we are not. These items include, but are not limited to:

Certified Copies of the Death Certificate - Certified copies of the Death Certificate are \$12.00 each.

Medical Examiner Fees – There is a fee for the Cremation Authorization required from the Medical Examiner that has jurisdiction over where the death has occurred.

Cemetery Fees – Opening and Closing of the grave. This charge will vary depending on the cemetery.

Newspaper Obituaries – Most newspapers will have a charge and require pre-payment for obituaries.

GENERAL PRICE LIST

These prices are effective as of **April 13, 2026**, and are subject to change without notice.

The goods and services shown below are those we can provide to our customers. You may choose only the items you desire. However, any funeral arrangements you select will include a charge for our basic services and overhead. If legal or other requirements mean you must buy any items you did not specifically ask for, we will explain the reason in writing on the statement we provide describing the funeral goods you selected.

BASIC SERVICES OF FUNERAL DIRECTOR AND STAFF

\$ 895.00

Our fee for the services of Funeral Director and Staff includes, but is not limited to, staff to respond to initial request for service, arrangement conference with family or responsible party, arrangement of funeral, preparation and filing of necessary authorizations and permits, recording vital statistics, preparation and placement of obituary notices, staff assistance prior to, during and following the funeral, including coordination with those providing other portions of the funeral, e.g. cemetery, crematory and others. Also included in these charges are overhead expenses relative to our facility, such as insurance, maintenance and utility expenses, secretarial and administrative costs, and equipment and inventory costs.

This fee for our basic services and overhead will be added to the total costs of the funeral arrangements you select. (This fee is already included in our charge for direct cremations, immediate burials, and forwarding and receiving remains.)

EMBALMING

\$ 795.00

Embalming is not required by state law. Embalming may be necessary, however, if you select certain funeral arrangements, such as a funeral with a viewing. If you do not want embalming you usually have the right to choose an arrangement that does not require you to pay for it, such as direct cremation or immediate burial.

OTHER PREPARATION OF DECEASED

- Other Preparation of the Remains:
(Includes the follow services as needed: washing, disinfecting, dressing, cosmetology, hairdressing and casketing.) **\$ 345.00**
- Refrigeration Fee for non-embalmed remains – up to 10 days, \$50 per day thereafter, only one fee for embalming or refrigeration will be charged **\$ 495.00**
- Special care for autopsied remains **\$ 200.00**
- Additional embalming procedures after Organ Procurement **\$ 300.00**
- Reconstructive restoration when necessary (per hour) **\$ 100.00**

FACILITIES AND SERVICES

Our services include coordinating the arrangements whether they are at our facility or an outside facility, display of floral arrangements, supervision of and attendance of our staff during the visitation, set-up of visitation or memorial service area, and supervision of graveside service.

VIEWING/GATHERING (2 hour period)

- Monday-Friday 10AM-4PM **\$ 400.00**
- Saturday/Sunday 9AM-9PM or Monday-Friday after 4PM **\$ 800.00**
- Visitation at other facility – in addition to standard fee **\$ 250.00**

FUNERAL CEREMONY/MEMORIAL SERVICE/CELEBRATION OF LIFE

- Same day (Held immediately after Viewing/Gathering) **\$ 150.00**
- Funeral Service – Monday-Friday 10AM-4PM **\$ 400.00**
- Funeral Service – Saturday-Sunday 9AM-9PM or Monday-Friday after 4PM **\$ 800.00**
- Graveside Service – Monday-Friday 10AM-4PM **\$ 400.00**
- Graveside Service – Saturday-Sunday 10AM-4PM **\$ 800.00**

PRIVATE FAMILY FAREWELL

\$ 350.00

Immediate family members (**Maximum of 15**) may view the deceased privately for up to 30 minutes Mon-Fri during normal business hours. **Includes limited other preparation of remains.** An additional preparation fee of \$200.00 will apply when an autopsy has been performed.

TRANSPORTATION

All transportation charges are within a 50 mile radius; additional distance will be charged at \$4.00 per mile.

- Transfer of remains to Funeral Home **\$ 495.00**
- Funeral Coach **\$ 495.00**
- Service/Utility Vehicle **\$ 200.00**
- Local transportation of remains to airport/railroad station **\$ 295.00**

FORWARDING REMAINS TO ANOTHER FUNERAL HOME **\$2775.00**

This charge includes basic services of funeral director and staff, transfer from place of death to funeral home, embalming, local transportation to airport/railroad station and combination transfer container/air tray. This charge does not include any visitation, rites, ceremonies or common carrier charges.

RECEIVING REMAINS FROM ANOTHER FUNERAL HOME **\$1685.00**

This charge includes basic services of funeral director and staff, transportation from airport/railroad station, temporary shelter of remains, transportation to cemetery or crematorium. This charge does not include any visitation, rites or ceremonies.

IMMEDIATE BURIAL **From \$2380.00 to \$4625.00**

This charge for immediate burial includes basic services of funeral director and staff, transfer from place of death to the funeral home, refrigeration, transportation to local cemetery. This charge does not include any visitation, rites or ceremonies.

- Immediate Burial with casket provided by purchaser **\$2380.00**
- Immediate Burial with casket selected from funeral home (Casket Additional) **\$2380.00**

FORWARDING REMAINS FOR ANATOMICAL DONATION **\$2385.00**

This charge includes the basic services of funeral director and staff, transfer from place of death to the funeral home, embalming and transportation to University of Florida or University of Central Florida College of Medicine. This charge does not include any visitation, rites or ceremonies.

DIRECT CREMATION **From \$1275.00 to \$3520.00**

This charge for direct cremation includes basic services of funeral director and staff, transfer from place of death to crematorium, refrigeration and standard cremation fee. This charge does not include any visitation, rites or ceremonies. If you want to arrange a direct cremation, you can use an alternative container. Alternative containers encase the body and can be made of materials like fiberboard or composition materials (with or without an outside covering). The containers we provide are cardboard containers.

- Direct Cremation with container provided by purchaser **\$1275.00**
- Direct Cremation with minimum cardboard alternative container **\$1350.00**
- Direct Cremation with reinforced wood alternative container for deceased weighing over 300 pounds **\$1425.00**
- Direct Cremation with cremation casket/container selected from funeral home (Casket/Container Additional) **\$1275.00**

OTHER CREMATION SERVICES

- Cremation Fee – this is already included in the Direct Cremation Charge **\$ 205.00**
- Witness of Cremation Process – Monday-Friday – Times are scheduled by Crematory, limited to immediate family. This includes additional charge by crematory and presence of funeral director – **in addition to standard cremation fee** **\$ 295.00**
- Hindu Service at Crematory – **in addition to standard cremation fee** **\$ 395.00**
- Local delivery of documents and/or cremated remains within 25 mile radius **\$ 95.00**
- Delivery of cremated remains to local cemetery – no set-up or service **\$ 195.00**
- Unattended scattering of cremated remains at funeral homes convenience **\$ 395.00**

- Delivery of cremated remains to Florida National Cemetery – no service – at funeral homes convenience **\$ 295.00**
- Packaging and mailing of cremated remains (within United States) by U.S.P.S. Cremated remains are permitted to be mailed domestically by the United States Postal Service – the package is sent via Priority Mail Express **\$ 225.00**

GENERAL SERVICES

- Preparation of paperwork for International Transfer of Remains **\$ 695.00**
- Insurance Assignment Processing **\$ 175.00**
- Use of preparation room for private autopsy – This does not include Pathologist fees, which are paid directly by family **\$ 500.00**
- Placement of obituary onto funeral home website w/guestbook for one year **\$ 195.00**
- Placement of death notice onto funeral home website **\$ n/c**
- Mailing of Certified Death Certificates by U.S.P.S Certified Mail **\$ 25.00**
- Overnight Mailing of Certified Death Certificates by U.S.P.S. **\$ 50.00**
- Guaranteed Travel Assurance Plan – Travel Assurance Plan will contact a local provider, which will arrange all aspects of cremation or preparation of remains. Travel protection will facilitate delivery of cremated remains to the designated authorized person or facilitate delivery of remains to funeral home in the community in which the participant lived. This provides protection when death occurs more than 75 miles from the address listed on the agreement. This plan cannot be refunded or used to offset against any balance at the time of services. **\$ 425.00**

MERCHANDISE

- Burial Caskets – complete price list available at funeral home **\$ 1445.00 to \$2245.00**
- Cremation Caskets – complete price list available at funeral home **\$ 995.00 to \$2245.00**
- Cremation Containers – complete price list available at funeral home **\$ 75.00 to \$ 295.00**
- Outer Burial Containers – complete price list available at funeral home **\$ 1295.00 to \$1695.00**
- Memorial Package Box Set – includes Register Book, 100 Memorial Folders/Prayer Cards and 2 boxes of Acknowledgement Cards **\$ 150.00**
- Register Book **\$ 40.00**
- Memorial Folders/Prayer cards (Not laminated) – per 100 **\$ 75.00**
- Laminated Prayer Cards – per 50 **\$ 75.00**
- Acknowledgement Cards – per box (25 per box) **\$ 10.00**
- Crucifix **\$ 30.00**
- Parting Stone **\$1795.00**
- Flag Display Case w/engraving **\$ 195.00**
- Slideshow Tribute Video – up to 75 pictures **\$ 195.00**
- Combination Transfer Container **\$ 295.00**
- Air Tray **\$ 295.00**
- Cremation Urns from **\$ 60.00**
- Hard Plastic Cremation Container for Cremated Remains **\$ 15.00**
- Keepsake Cremation Jewelry from **\$ 90.00**
- Legacy Touch Fingerprint Jewelry **Prices Vary**
- Art Glass with Cremains
 - Forever Heart w/stand **\$ 275.00**
 - Standing Forever Heart **\$ 275.00**
 - Small Sphere **\$ 375.00**
 - Large Sphere **\$ 495.00**
 - Eternal Flame Extra Small **\$ 375.00**
 - Eternal Flame Small **\$ 595.00**
 - Eternal Flame Medium **\$ 875.00**
 - Pendants **\$ 245.00**

Cremation Packages

Prices current as of April 13, 2026

Plan pricing does not include other memorial products, additional preparation that might be necessary for the deceased remains or cash advances. Pricing is based on our local service area (50 mile radius). There are additional transportation fees for services out of the area.

<p style="text-align: center;">Viewing Followed by Cremation</p> <ul style="list-style-type: none"> • Basic Services of Funeral Director and Staff • Transfer of Deceased • Embalming/Other Preparation • 2 Hour Visitation during normal business hours (Mon-Fri) • Cremation Fee • Hadley Cremation Casket • Memorial Package Box Set • Online obituary w/Guestbook on Cremation Choices website <p style="text-align: center;">Package Price - \$4095.00</p>	<p style="text-align: center;">Cremation Followed by Celebration of Life</p> <ul style="list-style-type: none"> • Basic Services of Funeral Director and Staff • Transfer of Deceased • Refrigeration • Celebration of Life Service during normal business hours (Mon-Fri) • Cremation Fee • Minimum Alternative Container • Memorial Package Box Set • Online obituary w/Guestbook on Cremation Choices website <p style="text-align: center;">Package Price - \$2495.00</p>	<p style="text-align: center;">Cremation with Committal Service at National Cemetery</p> <ul style="list-style-type: none"> • Basic Services of Funeral Director and Staff • Transfer of Deceased • Refrigeration • Coordination and Supervision of Committal Service at National Cemetery • Cremation Fee • Minimum Alternative Container • Flag Case w/engraving • Memorial Package Box Set • Online obituary w/Guestbook on Cremation Choices website <p style="text-align: center;">Package Price - \$2095.00</p>
---	---	--

<p style="text-align: center;">Simple Cremation with Private Family Farewell</p> <ul style="list-style-type: none"> • Basic Services of Funeral Director and Staff • Transfer of Deceased • Refrigeration • Private Family Farewell during normal business hours (Mon-Fri) • Cremation Fee • Minimum Alternative Container • Online obituary w/Guestbook on Cremation Choices website <p style="text-align: center;">Package Price - \$1895.00</p>	<p style="text-align: center;">Simple Cremation with Additional Services</p> <ul style="list-style-type: none"> • Basic Services of Funeral Director and Staff • Transfer of Deceased • Refrigeration • Cremation Fee • Minimum Alternative Container • Slideshow Tribute Video • Online obituary w/Guestbook on Cremation Choices website <p style="text-align: center;">Package Price - \$1740.00</p>	<p style="text-align: center;">Simple Cremation</p> <ul style="list-style-type: none"> • Basic Services of Funeral Director and Staff • Transfer of Deceased • Refrigeration • Cremation Fee • Minimum Alternative Container • Death Notice on Cremation Choices website <p style="text-align: center;">Package Price - \$1350.00</p>
---	--	---

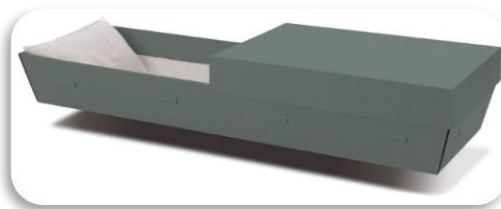
Cremation Caskets and Containers



Lyra – \$1595.00



Hadley - \$995.00



Baden - \$295.00



Min. Alt. Container - \$75.00

Keepsakes



Legacy Touch – Prices Vary



Art Glass with Cremains
– from \$245.00



Keepsake Cremation Jewelry
– from \$90.00



Parting Stone - \$1795.00

CASKET PRICE LIST

These prices are effective as of **April 13, 2026**, but thereafter subject to change without notice.

Aries - 20 Ga. Steel Gasketed – 5 Exterior Color Options, Crepe	\$2095.00
Gemini - 20 Ga. Steel Non-Gasketed – 5 Exterior Color Options, Crepe	\$1545.00
Apollo - 20 Ga. Steel Non-Gasketed – 5 Exterior Color Options, Crepe	\$1455.00

CREMATION CASKETS AND CONTAINERS

Lynx – Veneer with Satin Finish, Rosetan Crepe	\$2245.00
Lyra – Veneer with Satin Finish, Rosetan Crepe	\$1595.00
Hadley – Wood Composite, Ivory Crepe	\$ 995.00
Baden Alternative, Cardboard, Crepe	\$ 295.00
Wood Reinforced Oversize Minimum Alternative Container, Wood Base, No Lining	\$ 200.00
Cardboard Minimum Alternative, Cardboard, No Lining	\$ 75.00

OUTER BURIAL CONTAINER PRICE LIST

These prices are effective as of **April 13, 2026**, but thereafter subject to change without notice.

In most areas of the country, no state or local law makes you buy a container to surround the casket in the grave. However, many cemeteries ask that you have such a container so the grave will not sink in. Either a burial vault or a grave liner will satisfy these requirements.

Doric – Titan, Reinforced Concrete, Durapreme Plastic Liner	\$1695.00
Delphi – Concrete, Unlined	\$1295.00

DISCLAIMER OF WARRANTIES

Cremation Choices, makes no representations or warranties regarding the caskets or outer burial containers listed on the above price lists. The only warranties, expressed or implied, granted in connection with caskets or outer burial containers sold are the express written warranties, if any, extended by the manufacturers thereof. Cremation Choices, hereby disclaims all warranties, expressed or implied, relating to the caskets or outer burial containers, including, but not limited to the implied warranties or merchantability and fitness for a particular purpose.