



DOWN SYNDROME
CHESHIRE

March 2024 - March 2025

Adult Member Sessions



Down Syndrome Cheshire Income and Expenditure Year End 31 March 2025

Income:
£445,892



Expenditure:
£339,664

Surplus Revenue:
£106,228



Down Syndrome Cheshire Income and Expenditure Year End 31 March 2025



2024 Income:
£306,463

2025 Income:
£445,892

**45.5% increase
Year on Year**

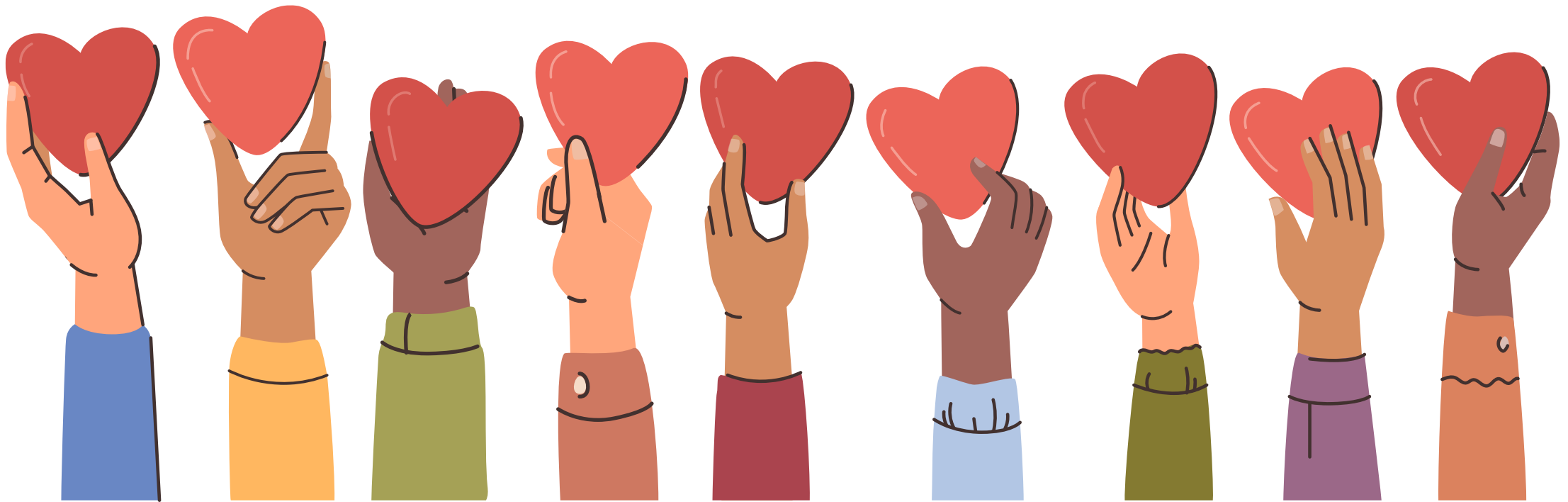


CHANGE IS COMING

THE WHY



THANK YOU TO ALL OUR WONDERFUL VOLUNTEERS





FUNDRAISER'S



SUPER FUNDRAISER'S



TRANTER

DRISCOLL

DAVIE

HOWARD

KINGSLEY

DUFF

PICKEN

WOODCOCK

PACKER

OLLIER

EDDLESTON

AVRAAM

JERSTICE

THOMAS

UPTON

MERCER

SMITH

KNIGHT

PICKERING

POTTER

LACEY





inta



Metlen

Energy & Metals



Eric Charlesworth Ltd
(Electrical Contractors)



THANK YOU



The
Henry Smith
Charity

Steve Morgan
FOUNDATION



AG
THE ALBERT GUBAY
CHARITABLE FOUNDATION



Society of the Holy Child Jesus

Actions Not Words

The Baily Thomas
Charitable Fund



Football Awards

Players Player

Parents Player

Coaches Player

