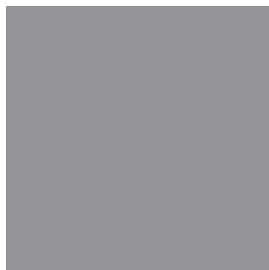




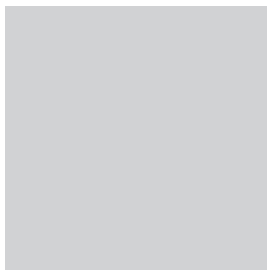
# CONCRETE colour guide







Gosling Creek \$135/m3 (1)



Gallery \$244/m3 (2)



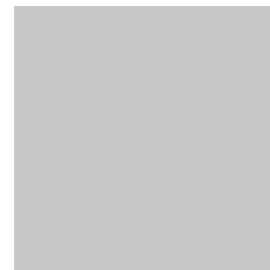
Patterson \$86/m3 (1)



Harvest \$86/m3 (1)



Market \$270/m3 (2)



Mt Canoblas \$276/m3 (2)



Summer St \$100/m3 (1)



Pinnacle \$150/m3 (1)



Towac \$84/m3 (1)



Canowindra \$100/m3 (1)



Basalt \$68/m3 (2)



Cafe \$105/m3 (1)



Onyx \$45/m3 (1)



Lidster \$92/m3 (1)



Millthorpe \$100/m3 (1)



Mullion Creek \$100/m3 (1)



Summer Hill \$100/m3 (1)



Clergate \$92/m3 (1)



Black \$90/m3 (2)



Cargo \$125/m3 (1)



Cook Park \$112/m3 (1)



Botanic Garden \$70/m3 (1)



Fig \$102/m3 (2)



Cherry Tree \$184/m3 (2)



Bluestone \$64/m3 (1)



Kangarooie \$100/m3 (1)



Canola \$90/m3 (1)



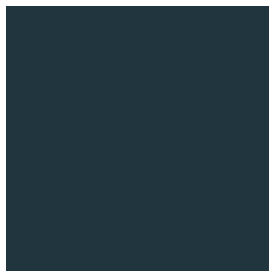
Clifton Grove \$95/m3 (1)



Plum \$192/m3 (2)



Lake Canoblas \$96/m3 (1)



Emu Swamp \$105/m3 (2)



Ophir \$100/m3 (1)



Cellar Door \$90/m3 (2)



Windera \$80/m3 (1)



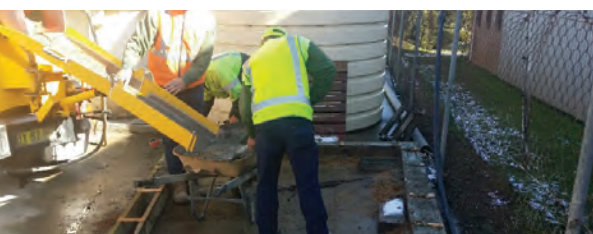
Orchard \$140/m3 (1)



Nashdale \$196/m3 (2)



CONCRETE colour guide



### Colour Selection Guide

Concrete placed over a large area can tend to look lighter than a brochure swatch or small representative sample. The method of finishing and surface texture can play a large part in the final outcome of your coloured concrete project.

For inspiration in selecting the colour for your concrete, look at areas such as the colour of your house, roofing and landscaping. Consider the use of the space. For example, a light coloured driveway may look great but if unsealed and heavily trafficked without regular maintenance (cleaning sealing etc.) it could soon look dirty, particularly from oil spills or tyre marks.

If trying to match pre-existing concrete, it is worth considering selecting a contrasting or complimentary colour, as the age difference between slabs will always create a variance of sorts. If using the same colour as previously then expect some visual difference

both due to the age gap and also changes in the raw concrete materials. If matching pre-existing concrete is critical then we recommend contacting us to discuss the project in detail.

If colour selection is critical to your project then we recommend placing a sample of concrete supplier and finished to the required specification for approval.

Whilst it is not imperative to seal your decorative concrete, we suggest that you consider applying a clear sealer. It helps to protect your investment and it is easier to clean and prevent stains. Some sealers will deliver a gloss 'wet-look' and can intensify and darken the colour shade of your concrete. On-going maintenance will be required. Of course sealing the concrete may not always be warranted or desired.

If further advice or assistance is required please contact us.

Whilst we have taken every effort to produce a brochure to accurately represent concrete coloured with Pigot's Midwestern Minimix colours, we cannot guarantee the colour of the final concrete product. The colours shown in this brochure together with any samples or displays of Pigot's Midwestern Minimix colours should be used as a guide to what may be achieved. All concrete colours will be influenced by a number of factors including the concrete raw materials (notably cement, supplementary cementitious products, aggregates and sand that can vary significantly with location), moisture content, curing, finishing techniques and weather conditions that are not under our control and that we can not guarantee. Concrete contains a number of man-made and naturally occurring raw materials that are not colour-controlled. For projects where colour is important or critical we recommend obtaining or placing a representative concrete sample from your concreter, precaster or concrete product manufacturer. We recommend using contractors experienced in placing and finishing coloured concrete and viewing local examples of their work. All information is offered without warranty, representation, inducement or licence and Pigot's Midwestern Minimix does not assume responsibility for reliance upon the same.