

Capability Statement



(03) 4050 7328

info@sspiletech.com



Website:

www.sspiletech.com

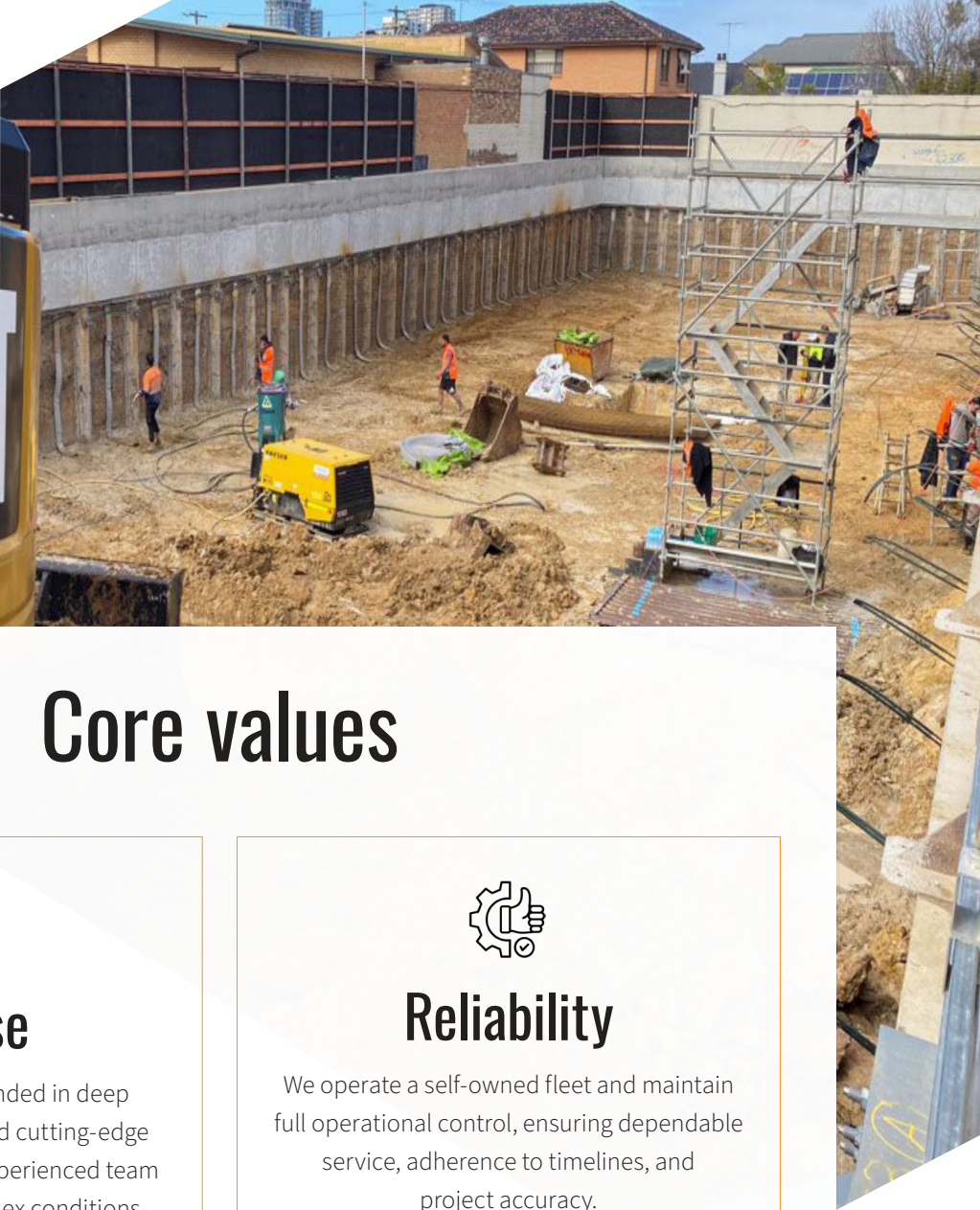
About S&S Piletech

Over 25 years of trusted piling expertise

S&S Piletech is a Melbourne-based, family-owned piling contractor with a rich legacy of delivering high-quality foundation solutions. Today, we are strategically expanding into Tier 1 infrastructure, bringing the same reliability and precision to large-scale, high-stakes projects.

What sets us apart:

- Trusted name in piling for over two decades
- Growing footprint in wind farms and major infrastructure
- Agile, owner-led business model with Tier 1 execution capabilities
- Proven track record with government and commercial projects



Core values



Expertise

We deliver solutions grounded in deep geotechnical knowledge and cutting-edge piling techniques, with an experienced team capable of managing complex conditions.



Reliability

We operate a self-owned fleet and maintain full operational control, ensuring dependable service, adherence to timelines, and project accuracy.



Growth-oriented

From residential builds to national-scale infrastructure, our trajectory is guided by innovation and continuous capability development.



Safety-first culture

Our top priority is safety—for people, property, and the planet. We implement industry-best safety protocols across all job sites.

Service capabilities

S&S Piletech offers a full suite of piling and foundation services for infrastructure and renewable energy sectors.



Bored piers

Diameters: 450mm–2200mm
Depths: up to 40m



CFA piles

Continuous Flight Auger,
450mm–900mm
Depths: up to 22m



Rock drilling

Large and small diameter
applications



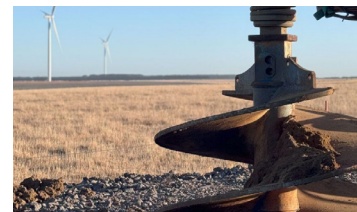
Infrastructure piling

Roads, bridges, civil assets



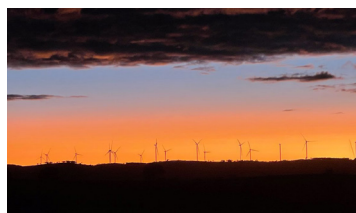
Basement construction

Single to multi-level packages



Screw piling

Ideal for wind farms and
transmission towers



Wind farm projects

Specialised foundation
solutions



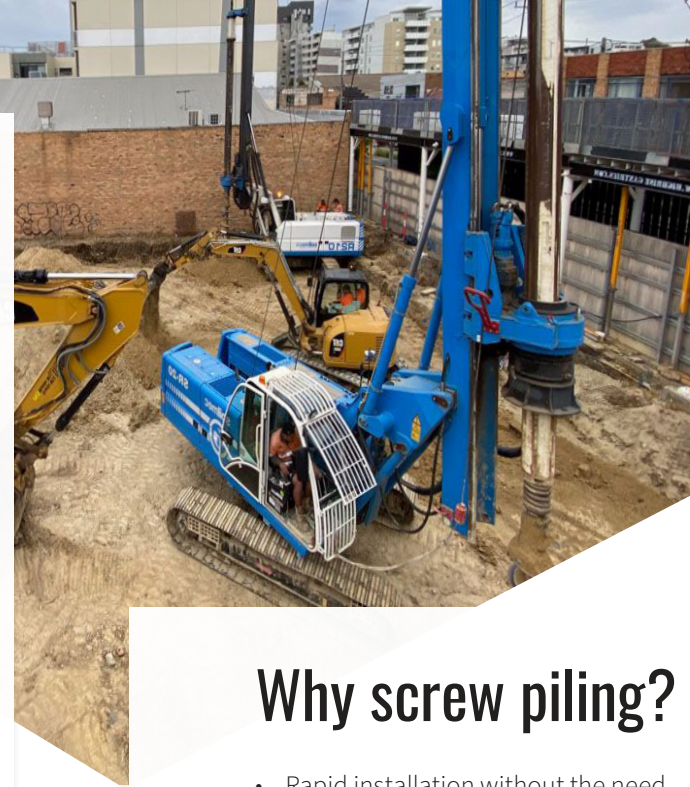
Transmission towers

High-capacity anchoring
systems



Earthmoving

Bulk excavation and site prep
for foundations and roads.



Why screw piling?

- Rapid installation without the need for excavation or curing

Screw piling for infrastructure

Screw piling is a core part of S&S Piletech's offering for infrastructure and renewable energy sectors. It's an efficient, high-performance solution for deep foundations, ideally suited to projects with strict timelines and geotechnical variability.

- Minimal ground disturbance and low environmental impact
- Superior performance in challenging or remote terrains
- Excellent load-bearing and torque resistance for large structures

Applications:

- Wind turbines and substations
- Transmission towers and bridge abutments
- Remote infrastructure and renewable energy assets

Our process

Our dedicated screw piling teams are equipped with the knowledge and machinery to meet demanding infrastructure briefs—safely, efficiently, and to the highest engineering standards.

- 01 Engineering and design**
Site-specific assessment to determine optimal pile dimensions and placement.

- 02 Installation**
Precision placement using our high-capacity rigs—ensuring alignment with torque and depth specifications.

- 03 Testing and assurance**
Each pile is verified to meet design load parameters.

- 04 Structural integration**
Smooth handover to subsequent construction phases with verified ground anchoring.

Fleet overview

S&S Piletech operates a modern, well-maintained fleet that handles a broad spectrum of geotechnical conditions and project requirements. Our machinery ensures we can deliver precision piling solutions on schedule and at scale.

Our core fleet includes:

- 60-tonne piling rigs** – Ideal for deep foundations and high-torque screw piling.
- 40-tonne piling rig** – Balanced power for mid-sized infrastructure projects.
- 30-tonne piling rigs** – Agile units suited for urban or restricted-access sites.

Flexible equipment scaling

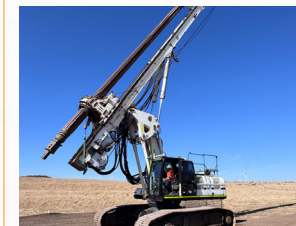
Through long-standing relationships with specialist suppliers, we have immediate access to larger or specialised rigs when needed.

This ensures we can adapt to complex project scopes without delay, delivering Tier 1 capacity with the responsiveness of an owner-led team.

Get in touch with us

(03) 4050 7328
info@sspiletech.com
 Website: www.sspiletech.com

Selected projects



Hawkesdale Windfarm VIC
 Client - Elecnor



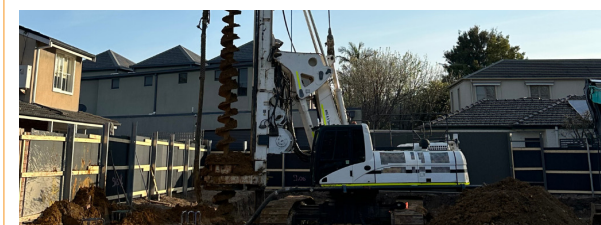
Rye Park Wind Farm
 Client - Zenviron



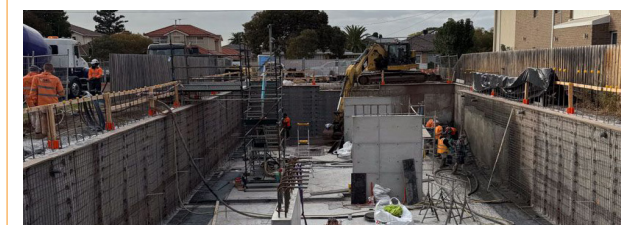
143 High Street, Preston
 Client - Form 700



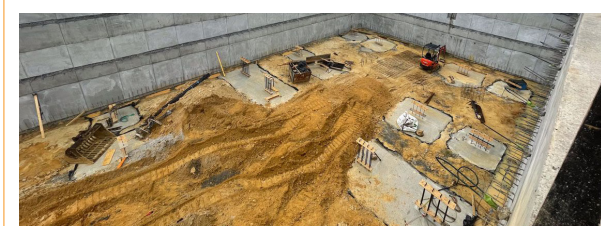
98 Buckley Street, Moonee Ponds
 Client - Form 700



8 Wells Street, Brighton
 Client - Makshaq



**8 Renown Street, Essendon
 (full basement package)**



**25 Hedderwick Street, Essendon
 (full basement package)**

Get in touch with us

(03) 4050 7328
info@sspiletech.com
 Website: www.sspiletech.com



S&S
PILETECH
PILING & FOUNDATIONS

Get in touch with us



(03) 4050 7328

info@sspiletech.com



Website:

www.sspiletech.com