

sheltonhomes

CREATING *modern* QUEENSLANDERS

Est. 1995

THE ROSEWOOD



THE ROSEWOOD

The Rosewood features a classical Queenslander cottage feel, featuring two stunning bay windows in the front façade beautifully paired with a Queenslander verandah.

The Rosewood floorplan has intentionally maximised the space in this home to the highest level of practicality and functionality. The kitchen has its own space but is still connected to the meals, living and deck, ensuring you can still be involved while you are cooking. The hallway helps provide an intentional separation between the bedrooms and living spaces and provides ample storage space. The main bedroom features a walk-in wardrobe and ensuite, each bedroom also features built-in wardrobes. This design offers a spacious double entry to the lounge room which ideal for practical access.

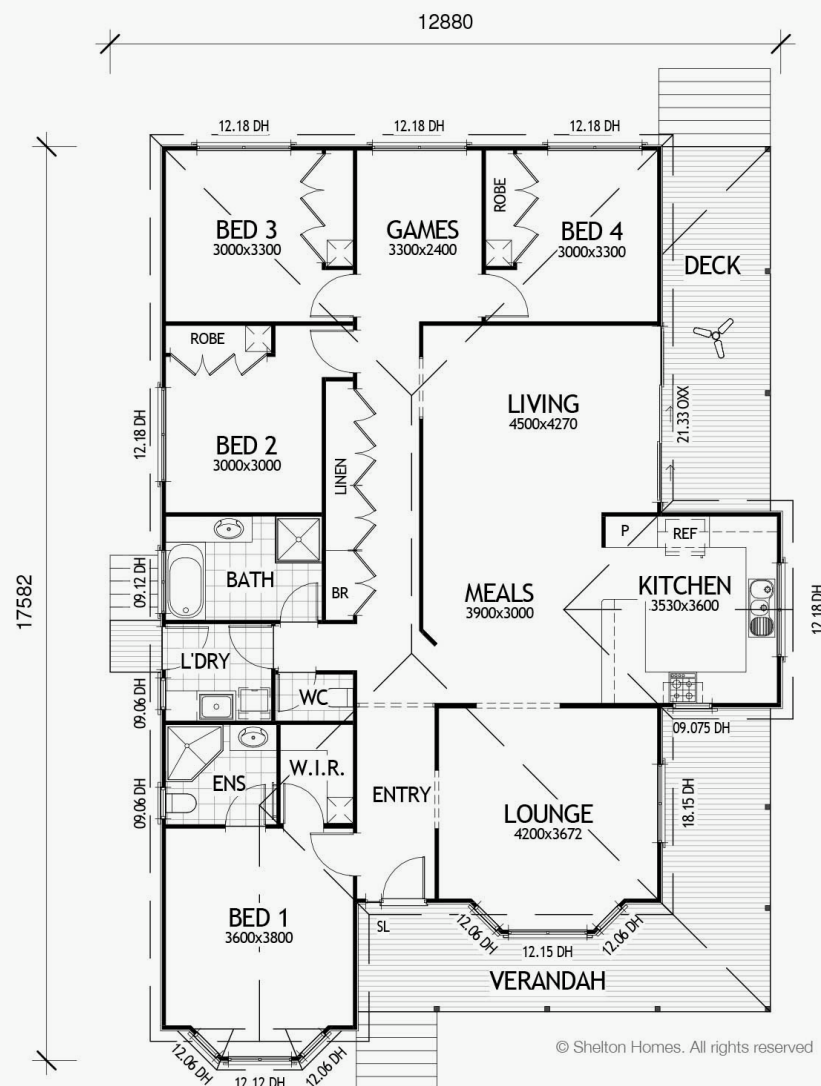
EXTERIOR WIDTH 12.88m

LENGTH 17.58m

TOTAL FLOOR AREA 198.6m²



sheltonhomes
CREATING *modern* QUEENSLANDERS



Please Note: The floor plan provided is for illustrative purposes only and is not drawn precisely to scale. However, the overall length and width can be assumed to be accurate. It is the home owner's responsibility to ensure that the house will fit on their land and that all applicable council regulations and estate requirements are met. The image of the façade is for illustrative purposes only and may contain items or finishes which may or may not be standard inclusions.



BUILD A HOME THAT
FINALLY FEELS LIKE
home

Simply call or email
Scott and the team

0417 961 667

scott@sheltonhomes.com.au

sheltonhomes
CREATING *modern* QUEENSLANDERS