

sheltonhomes

CREATING *modern* QUEENSLANDERS

Est. 1995

# THE PATTISON



# THE PATTISON

The Pattison is one of our slab home designs that offers a classical Queenslander look and feel, featuring a stunning bay window in the front façade.

The Pattison floorplan features modern functionality with traditional elements. Intentional storage spaces and a designated large pantry are all part of this home's resourcefulness.

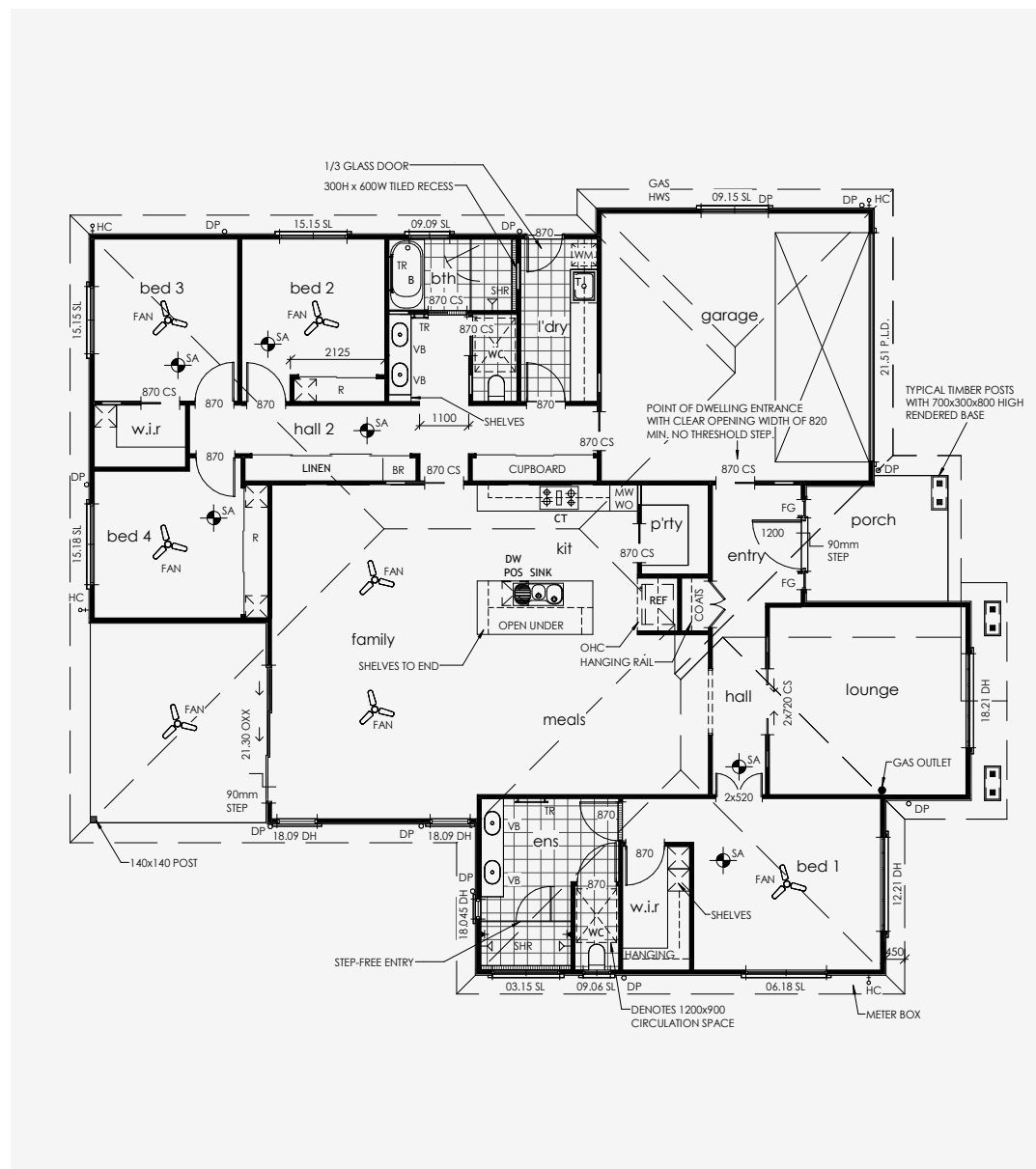
Bedrooms 2, 3 and 4 are separate from Bedroom 1 enabling your guests or kids to have their own space. The main bathroom configuration is a smart use of space, ensuring multiple people can be in the space at once. An intentionally separate lounge room gives you the choice to have quiet space away from the rest. The main bedroom offers an ensuite and walk-in wardrobe offering you ample space and practicality.

The open plan area for the meals, kitchen, family and alfresco area is all interconnected, making this space the hub of connection and entertainment.

EXTERIOR WIDTH 17.11m

LENGTH 20.37m

TOTAL FLOOR AREA 280m<sup>2</sup>



Please Note: The floor plan provided is for illustrative purposes only and is not drawn precisely to scale. However, the overall length and width can be assumed to be accurate. It is the home owner's responsibility to ensure that the house will fit on their land and that all applicable council regulations and estate requirements are met. The image of the façade is for illustrative purposes only and may contain items or finishes which may or may not be standard inclusions.





BUILD A HOME THAT  
FINALLY FEELS LIKE  
*home*

Simply call or email  
Scott and the team

0417 961 667  
[scott@sheltonhomes.com.au](mailto:scott@sheltonhomes.com.au)

**shelton**homes  
CREATING *modern* QUEENSLANDERS