

sheltonhomes

CREATING *modern* QUEENSLANDERS

Est. 1995

THE GREENMOUNT

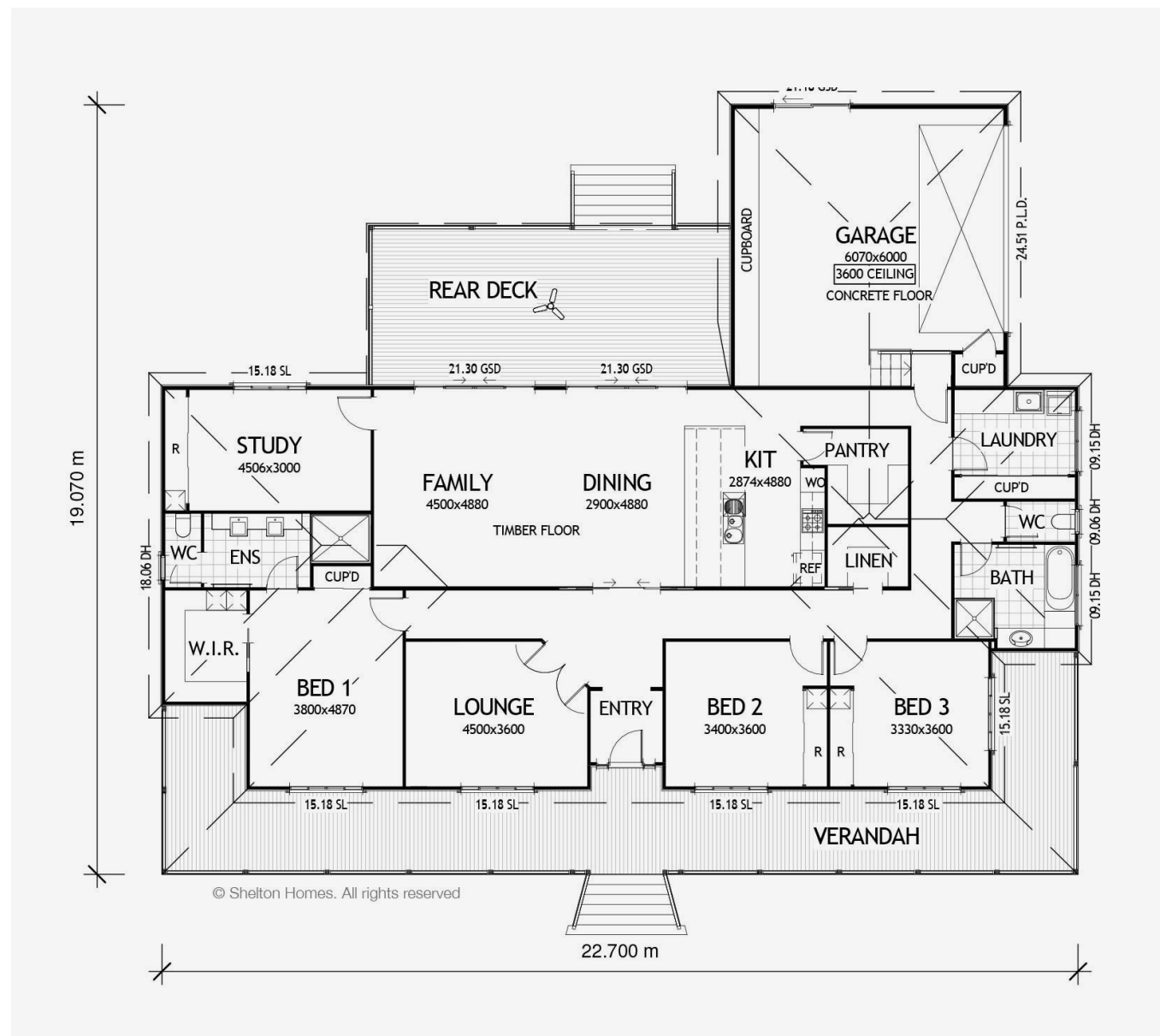


THE GREENMOUNT

The Greenmount is an impressive compact Queenslander design that offers the perfect mix between traditionalism and modernism.

This floorplan evokes intentional practicality in its design. The built-in garage, butler's pantry and large amounts of storage is a favourite for many who have chosen this design. The main bedroom offers a walk-in wardrobe and ensuite. Bedrooms 1 and 2 offer built-in wardrobes and easy access to the guest bathroom. The open plan design for the family, dining, kitchen and rear deck allows for easy entertaining and family time. If you are looking for a space to retreat this design offers a separate study and lounge space for you.

EXTERIOR WIDTH	19.07m
LENGTH	22.7m
TOTAL FLOOR AREA	357.7m ²



sheltonhomes
CREATING *modern* QUEENSLANDERS

Please Note: The floor plan provided is for illustrative purposes only and is not drawn precisely to scale. However, the overall length and width can be assumed to be accurate. It is the home owner's responsibility to ensure that the house will fit on their land and that all applicable council regulations and estate requirements are met. The image of the façade is for illustrative purposes only and may contain items or finishes which may or may not be standard inclusions.



BUILD A HOME THAT
FINALLY FEELS LIKE
home

Simply call or email
Scott and the team

0417 961 667

scott@sheltonhomes.com.au

sheltonhomes
CREATING *modern* QUEENSLANDERS