

sheltonhomes

CREATING *modern* QUEENSLANDERS

Est. 1995

THE COLONIAL 6.4



THE COLONIAL 6.4

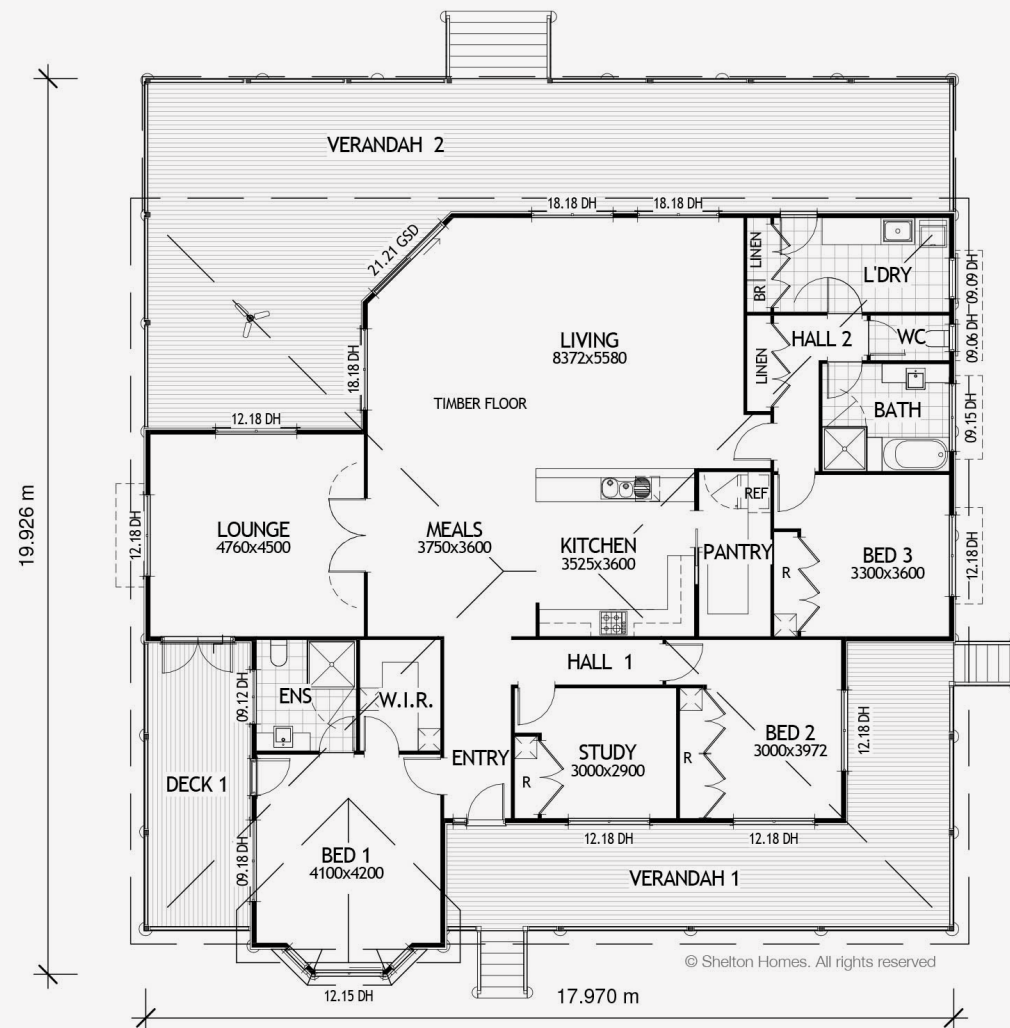
The Colonial 6.4 is a traditional shaped Queenslander home.

Enjoy 3 beautiful Queenslander verandahs in 1 home. A verandah welcoming your guests, a private verandah running off the main bedroom and lounge room, and the grand back verandah – where many memories with friends and family will be made. In this Colonial design you can enjoy a dedicated study space, a large open-plan living space where the kitchen, dining and living space is combined, the kitchen features a spacious walk-in butler's pantry. 4 spacious bedrooms all including built-in wardrobes, 2 bathrooms with a separate toilet, a separate lounge and/or media area. This design features a large laundry / mudroom that opens onto the back verandah.

EXTERIOR WIDTH 17.97m

LENGTH 19.92m

TOTAL FLOOR AREA 347.4m²





BUILD A HOME THAT
FINALLY FEELS LIKE
home

Simply call or email
Scott and the team

0417 961 667

scott@sheltonhomes.com.au

sheltonhomes
CREATING *modern* QUEENSLANDERS