

sheltonhomes

CREATING *modern* QUEENSLANDERS

Est. 1995

## THE **BILBY 3**



# THE BILBY 3

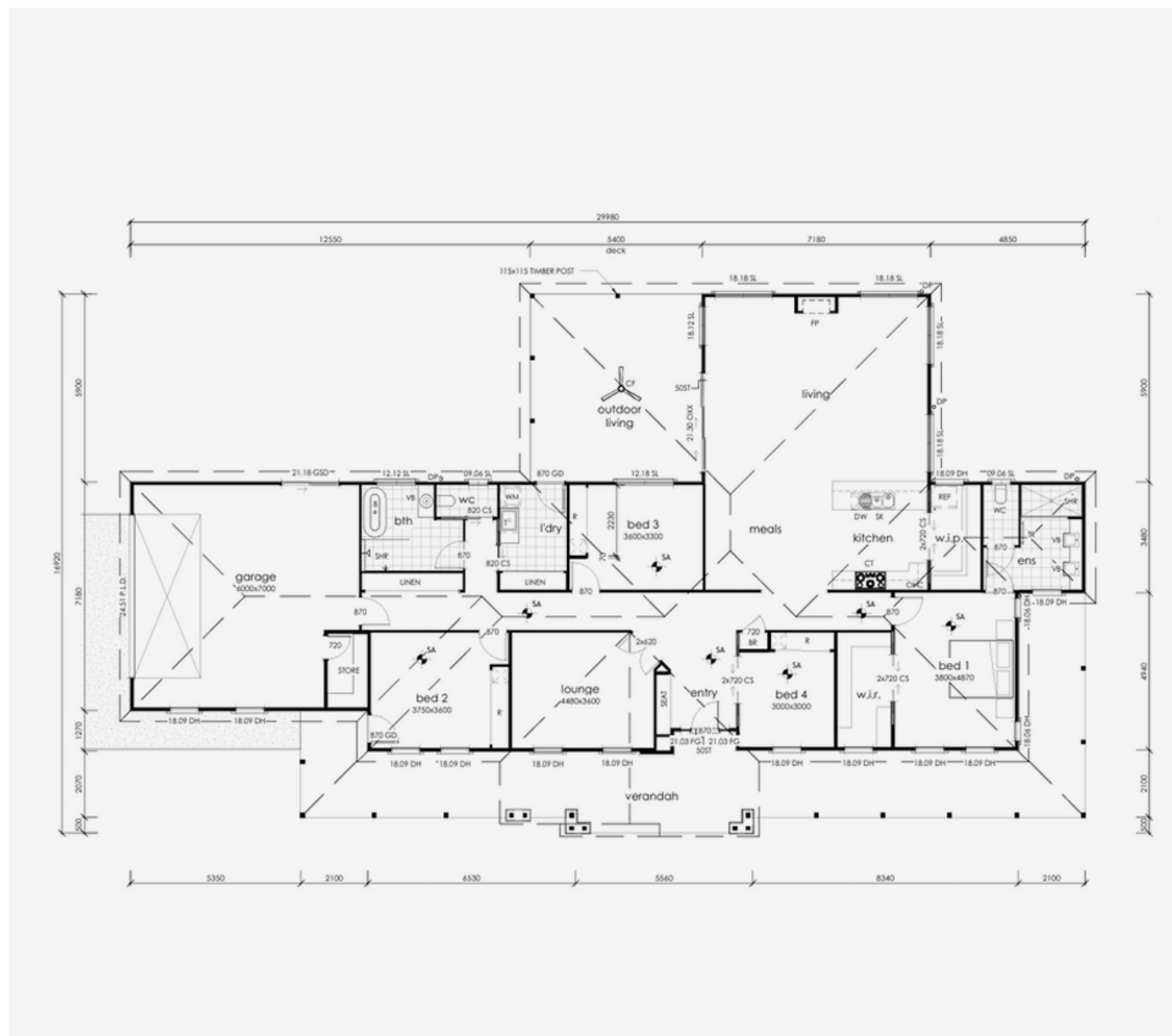
The Bilby 3 design offers many spaces for family and friends to enjoy including a separate lounge and a large open plan living area that connects to the rear deck.

In this design you can enjoy the luxuries of a spacious butler's pantry that is connected to the kitchen, bathrooms with separate toilets, a large walk-in wardrobe in the main bedroom, and built-in wardrobes in all bedrooms and a dedicated study space.

EXTERIOR WIDTH 29.98m

LENGTH 16.92m

TOTAL FLOOR AREA 374.93m<sup>2</sup>



**shelton**homes  
CREATING *modern* QUEENSLANDERS

Please Note: The floor plan provided is for illustrative purposes only and is not drawn precisely to scale. However, the overall length and width can be assumed to be accurate. It is the home owner's responsibility to ensure that the house will fit on their land and that all applicable council regulations and estate requirements are met. The image of the façade is for illustrative purposes only and may contain items or finishes which may or may not be standard inclusions.



BUILD A HOME THAT  
FINALLY FEELS LIKE  
*home*

Simply call or email  
Scott and the team

0417 961 667  
[scott@sheltonhomes.com.au](mailto:scott@sheltonhomes.com.au)

**shelton**homes  
CREATING *modern* QUEENSLANDERS