

---

# COMPOSTABLE PRODUCTS - GREEN MOUNTAIN COMPOST



Chittenden Solid Waste District

DAN GOOSSEN | DIRECTOR OF ORGANICS RECYCLING





# BACKGROUND

Chittenden Solid Waste District's  
Organic Recycling Facility *home of*  
Green Mountain Compost

- Incoming feedstocks 2024 : 19,786 T
  - Food scraps 4,573 T
  - Yard waste 11,234 T
  - Manures 3,786 T
- Compost production 2024 : ~11,940 cu yd
  - Sold in bulk as compost as well as manufactured topsoil and garden mix.

**169,481**

residents

**8,939**

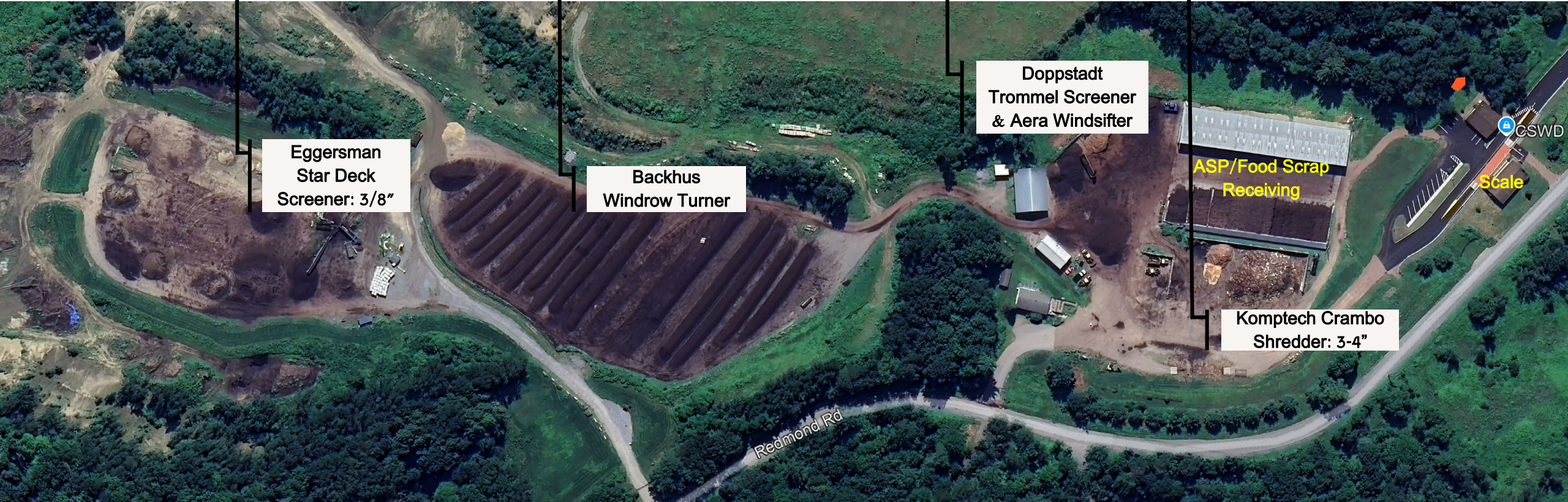
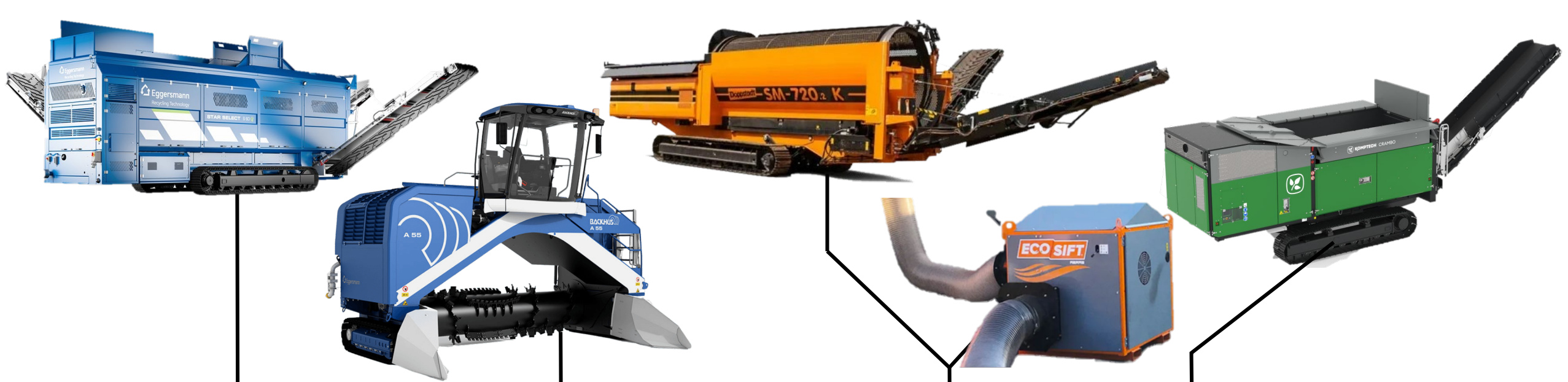
businesses



2023 data. Sources: U.S. Census and  
VT Dept. of Labor



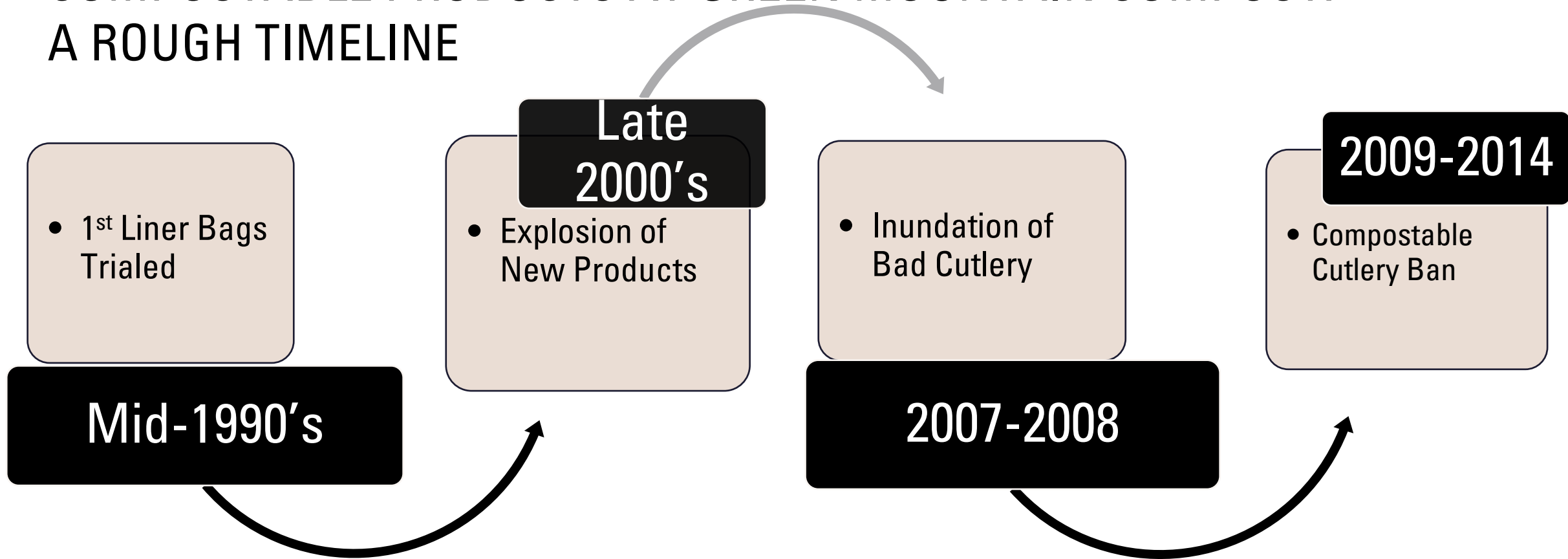






---

## COMPOSTABLE PRODUCTS AT GREEN MOUNTAIN COMPOST: A ROUGH TIMELINE





---

## 2007-2008 ATTACK OF THE TATERWARE



---

## 2013-2014 FIELD TRIALS

- 9 BRANDS
- 173 DAYS OF  
COMPOSTING







Cafeteria food scraps with contamination mixed in



Contaminates separated from cafeteria food waste, different load

---

## ACT 148

- 2012-2020 saw the full roll-out of Act 148
- Organics collection was being done for businesses and residents that were not previously seeking out composting services.









---

# CONTAMINATION PAINS

---



# COMPOSTABLE PRODUCTS BAN\*

## JANUARY 2022

### Reasons Given

- Look-Alikes
- Non-compostability of some items
- Concerns over PFAS

\*Liner bags are exception

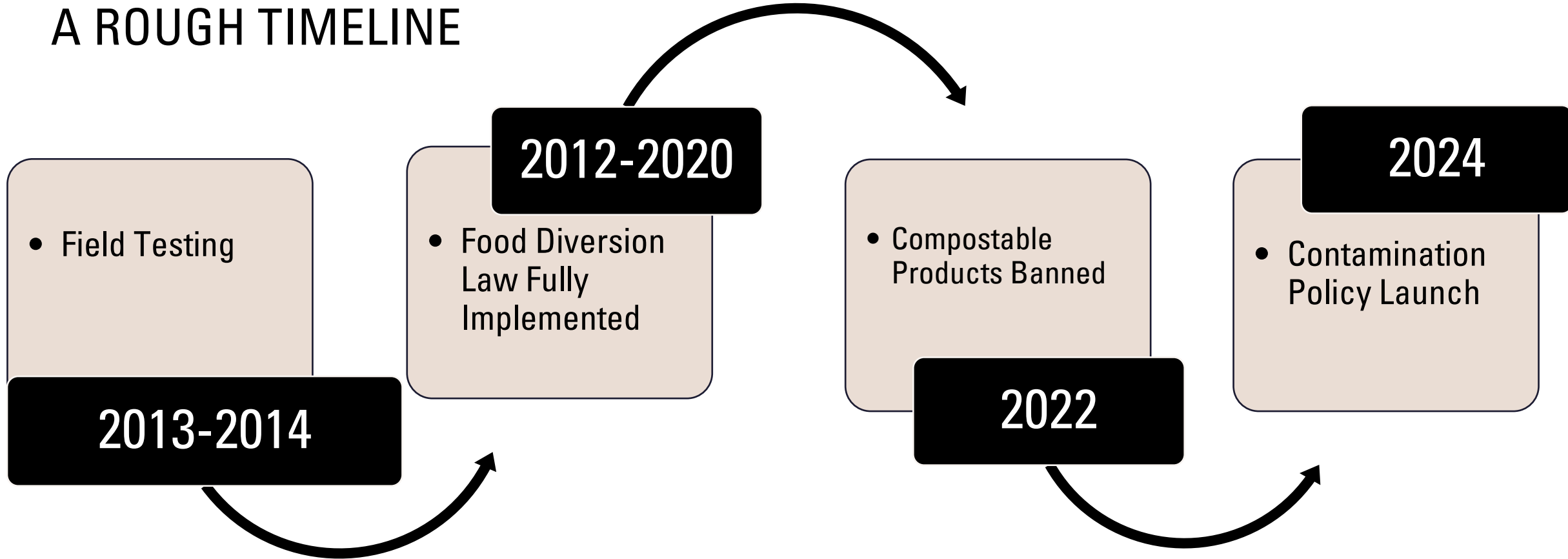


Compostables removed from a food waste load.



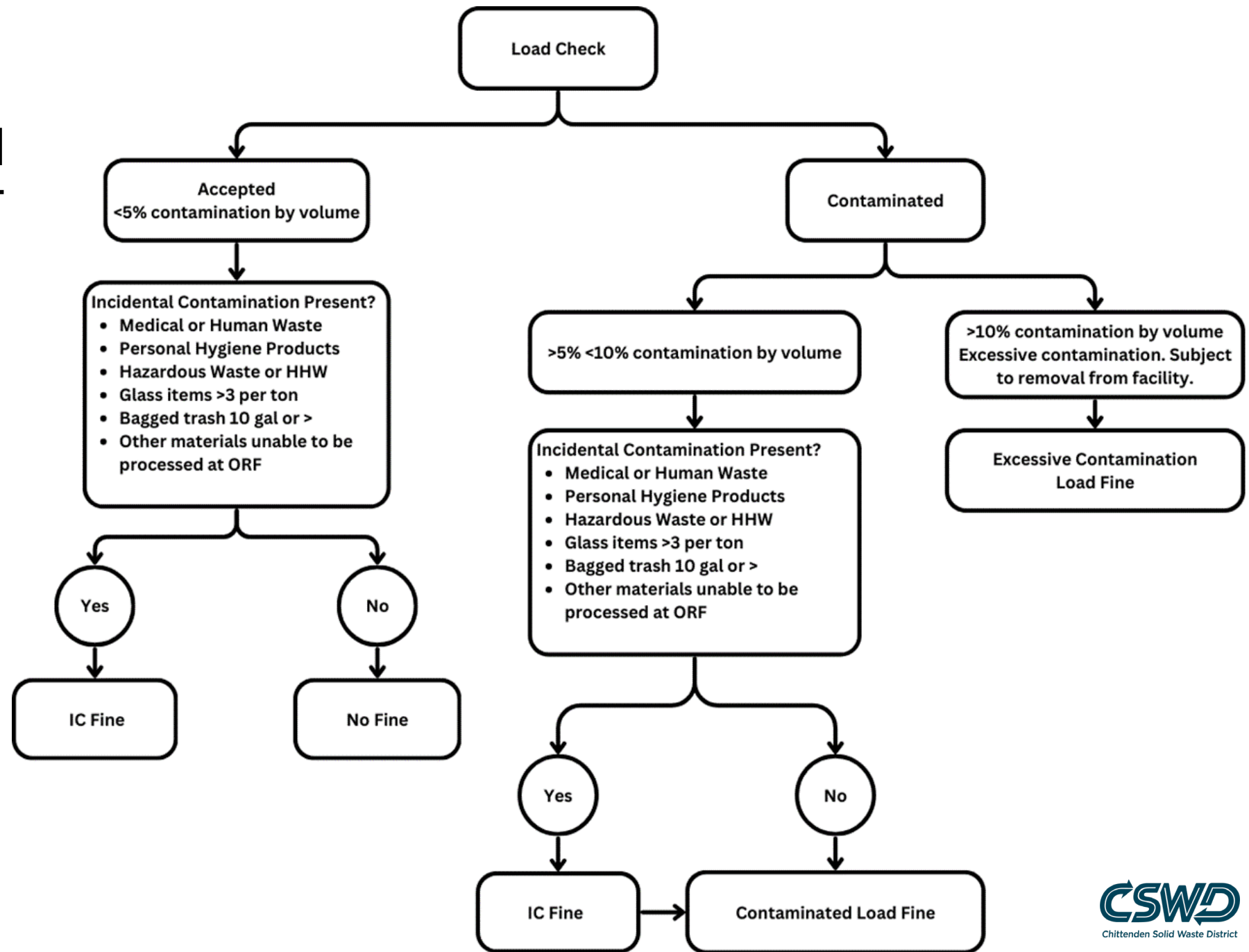
---

## COMPOSTABLE PRODUCTS AT GREEN MOUNTAIN COMPOST: A ROUGH TIMELINE





# CONTAMINATION POLICY IN EFFECT





# PROGRESS!





---

# WHERE AND WHEN COMPOSTABLE PRODUCTS MAKE SENSE



- In closed, controlled environments with strong infrastructure and complete utilization
  - Stadiums
  - Certain cafeterias/corporate campuses
  - Festivals
- In integrated systems where hauler is also the composter (and vendor!)
  - Compost Now
  - Cedar Grove



---

# WHERE AND WHEN COMPOSTABLE PRODUCTS MAKE SENSE



- At facilities where sufficient time, energy, and infrastructure is available to sort contamination
- With certain ubiquitous items:
  - PLU stickers
  - Liner bags



---

# WHERE AND WHEN COMPOSTABLES DO NOT MAKE SENSE



Anywhere where there are no facilities to accept them



Any facility where they will go through a depackager





---

THANK YOU



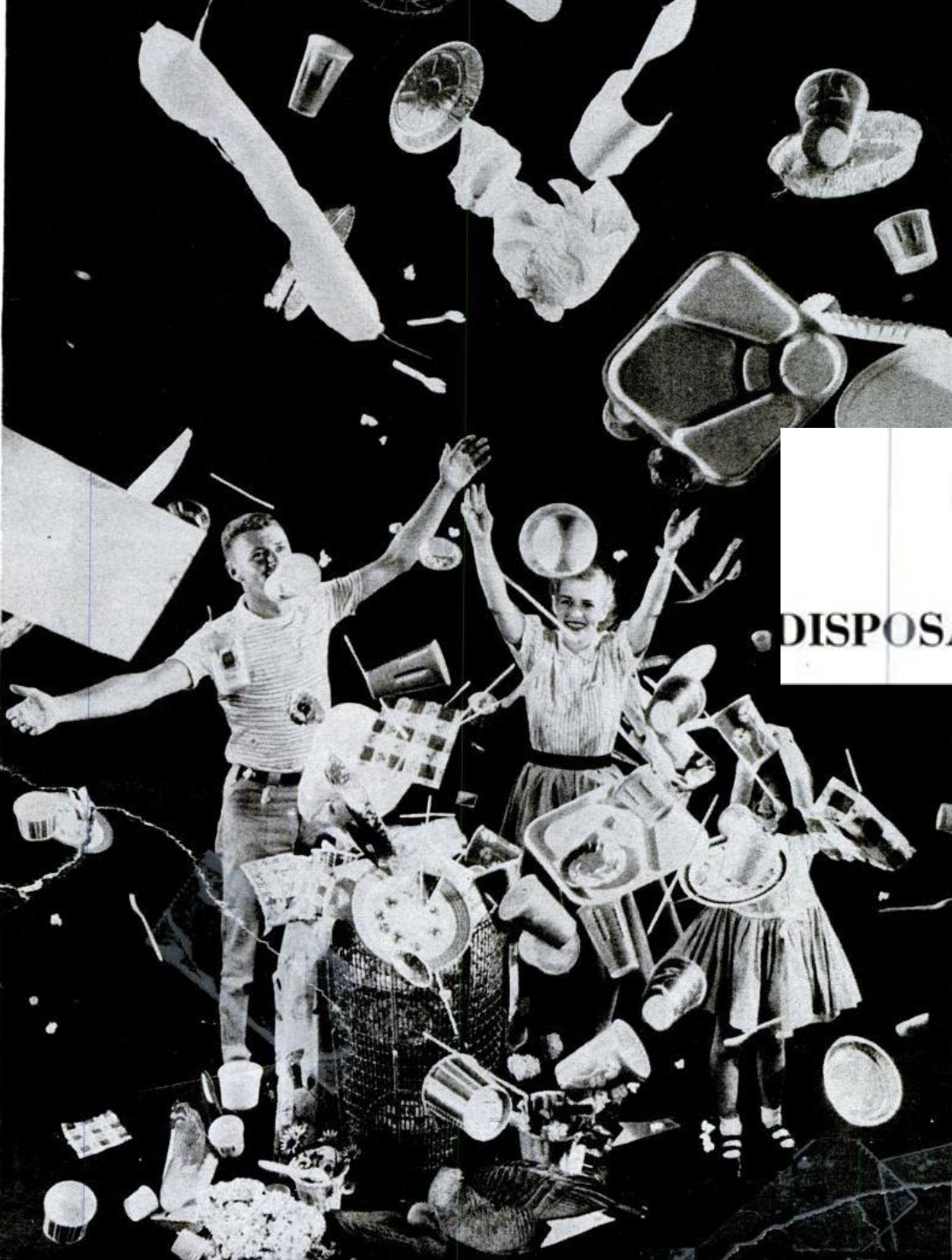


---

**BUT WHAT IF THINGS  
WERE DIFFERENT.....?**

---





---

# Throwaway Living

DISPOSABLE ITEMS CUT DOWN HOUSEHOLD CHORES

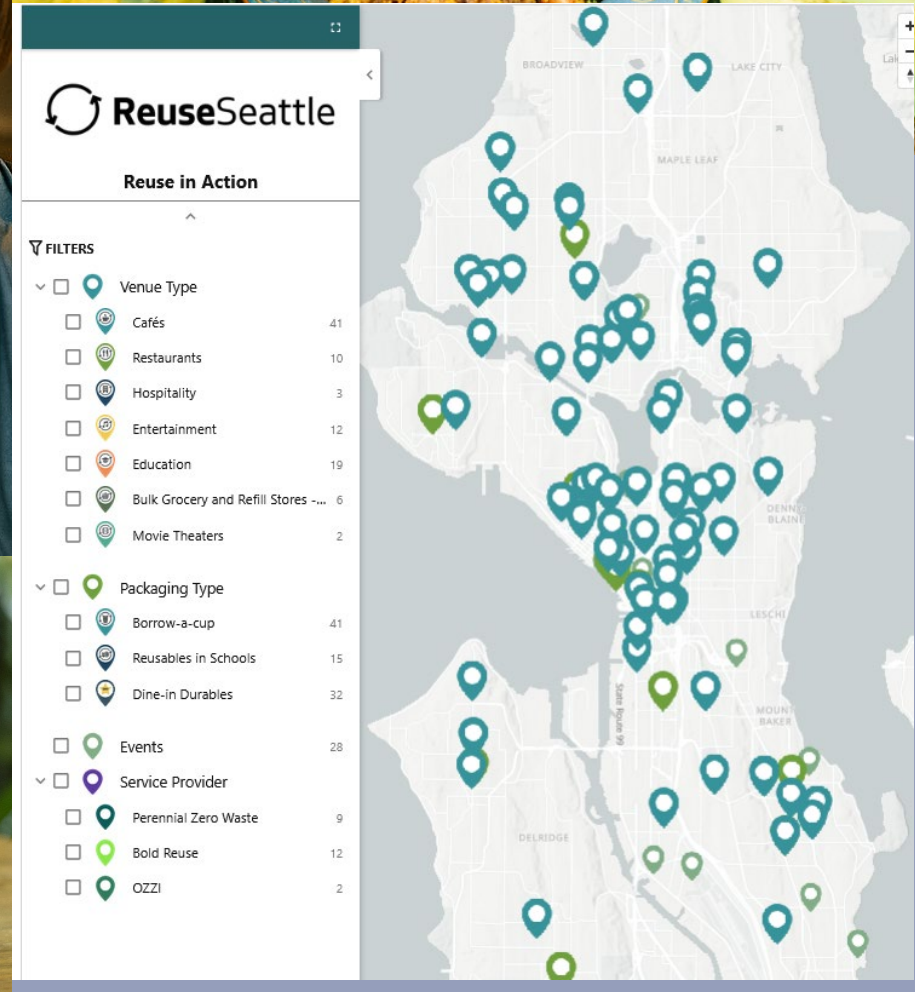
IMAGE: "THROWAWAY LIVING," LIFE MAGAZINE, 1955. © TIME INC.

---













---

THANK YOU

